



1970

WARRIOR



Property of FGHS

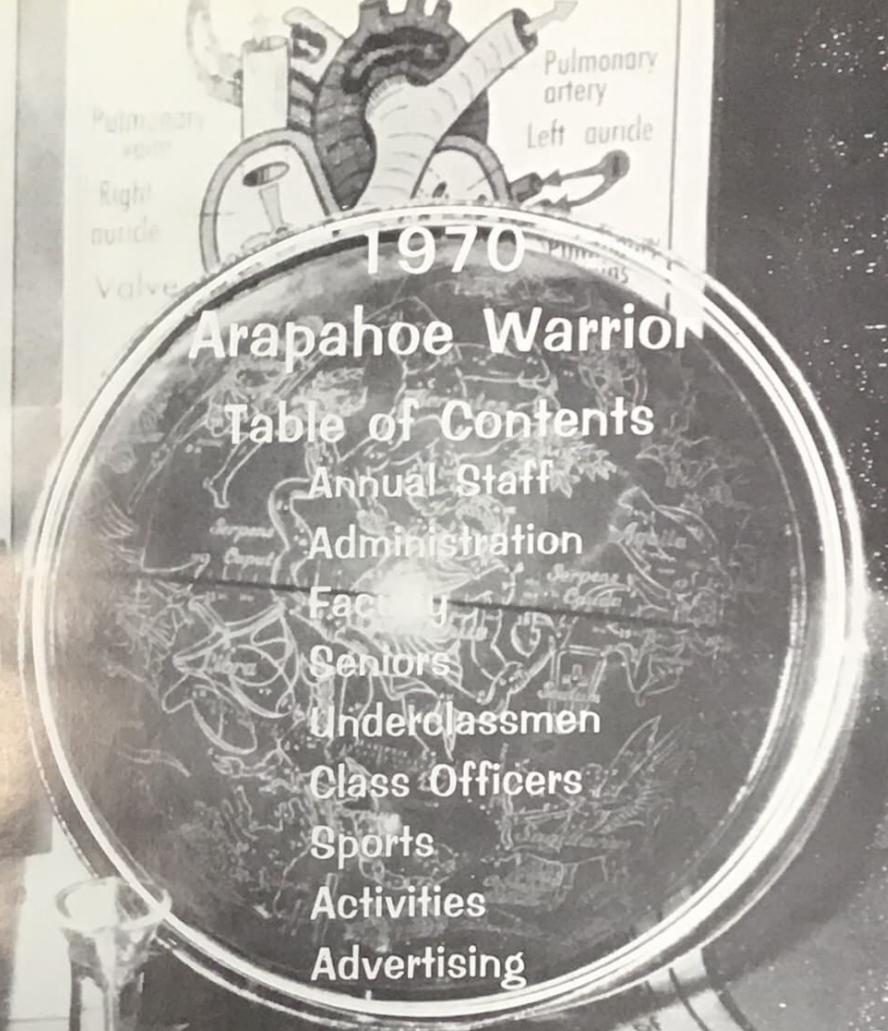
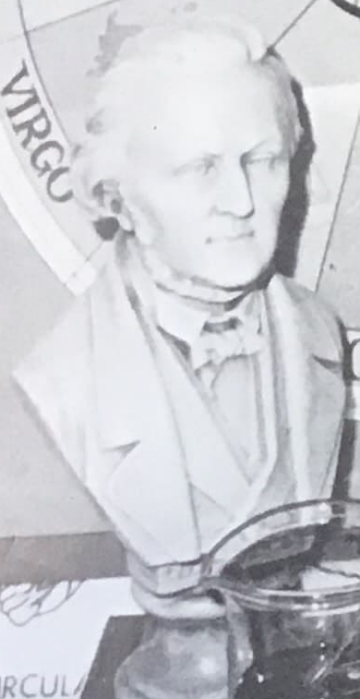
Given by School Dist. 18

9-03-2006

1970

# Dedicated to Apollo II: A Giant Leap for Mankind.

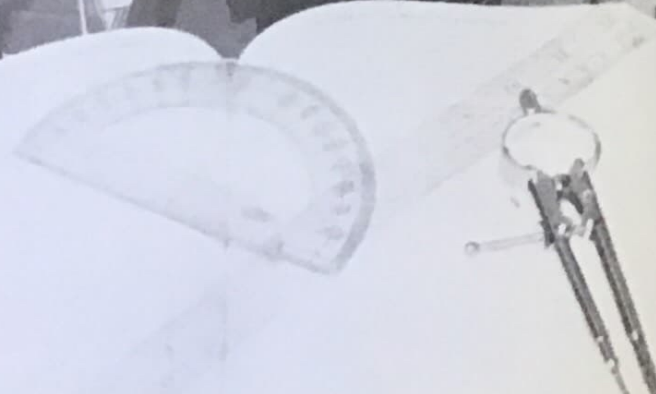




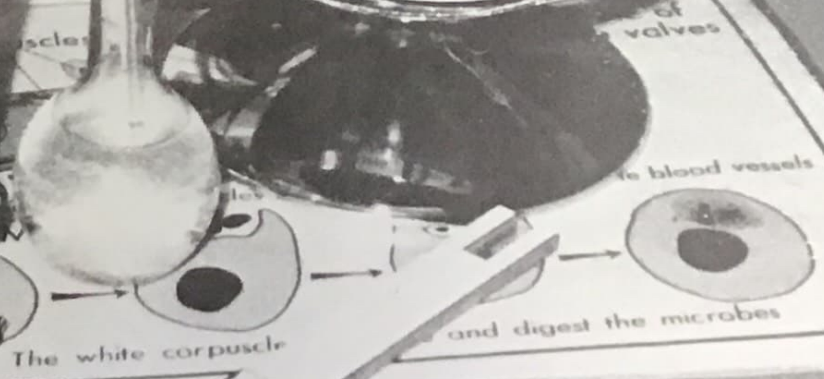
1970  
**Arapahoe Warrior**  
 Table of Contents  
 Annual Staff  
 Administration  
 Faculty  
 Seniors  
 Underclassmen  
 Class Officers  
 Sports  
 Activities  
 Advertising

BRANCA  
**PSYCHOLOGY**  
 THE SCIENCE OF

INSPECTIVES  
 GALAXY  
 SF



PLAN OF THE  
 Red  
 corpuscle



Mary Beth Mues - Art Editor

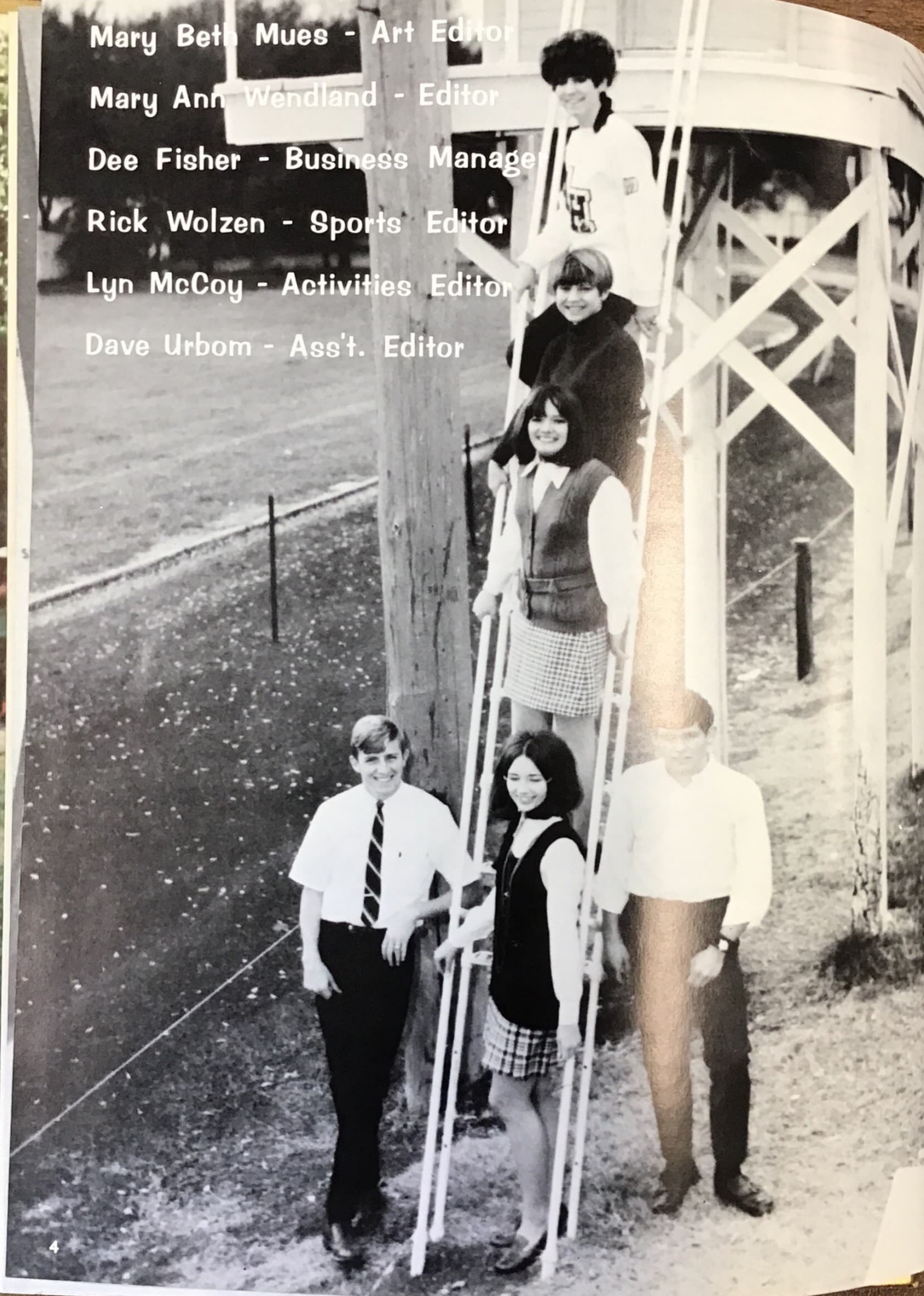
Mary Ann Wendland - Editor

Dee Fisher - Business Manager

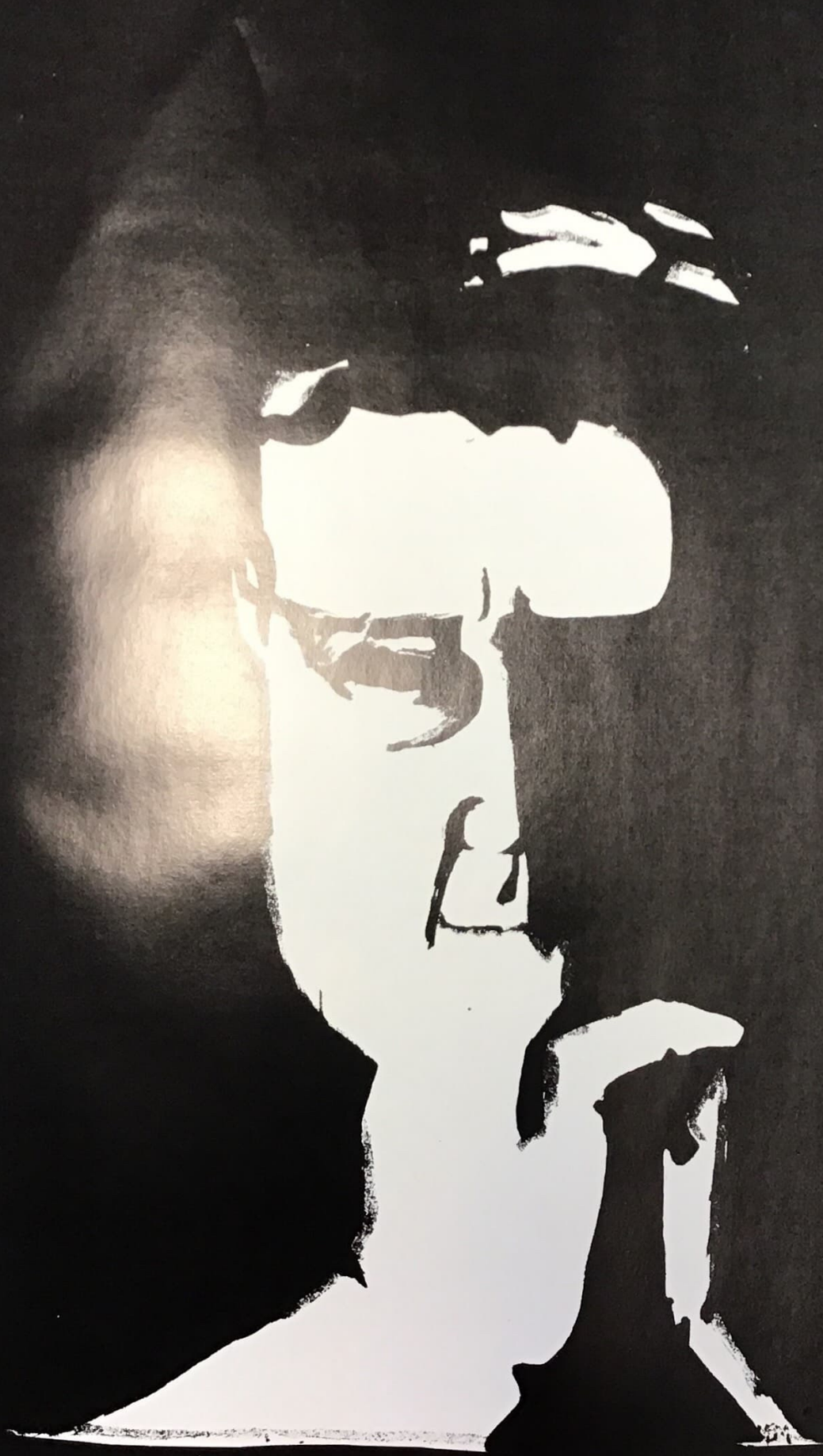
Rick Wolzen - Sports Editor

Lyn McCoy - Activities Editor

Dave Urbom - Ass't. Editor



# Faculty



Administration and Faculty



MR. ERNEST HEIDT  
Superintendent



MR. DALE POORE  
Principal



MR. MELVIN GILES  
Guidance - Science - Math



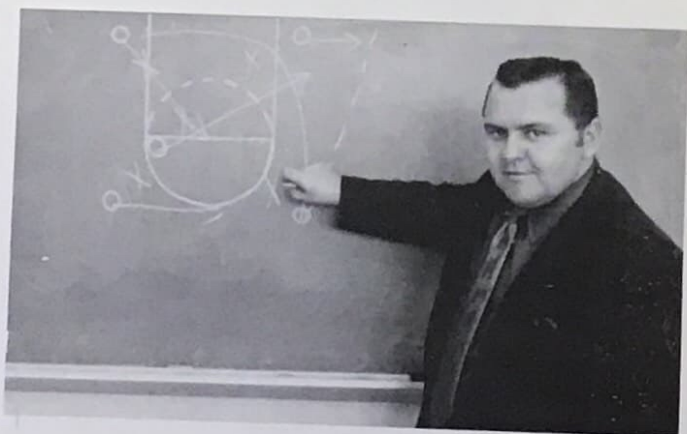
MRS. MARY ELIASON  
Secretary



MR. STEVE MARTIN  
Spanish - English - Geography



MR. HOWARD DAVIS  
Psychology - Science

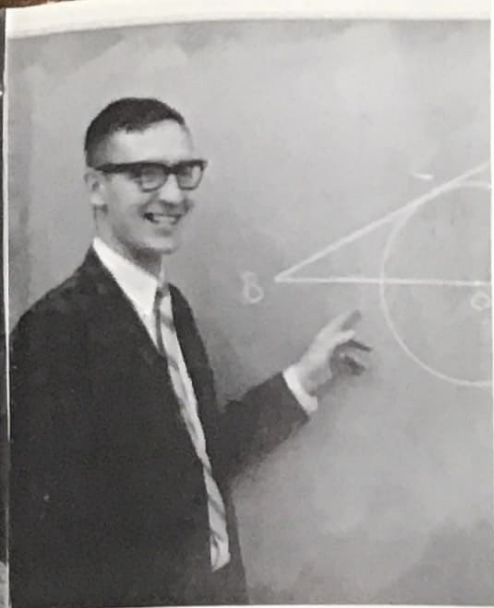


MR. DON McCORD  
Industrial Arts - Coach



MISS JACQUELINE MINTLING  
English





MR. DON STOLL  
Math



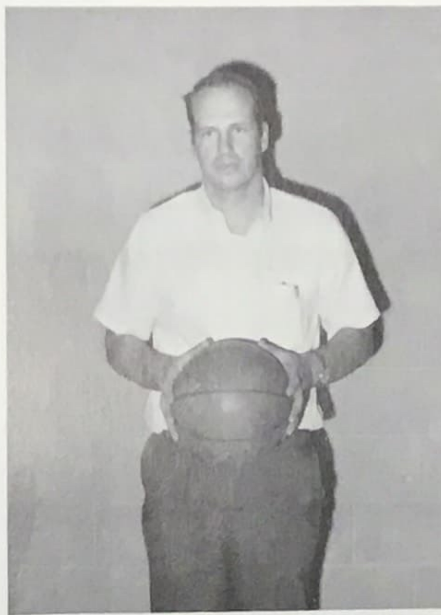
MR. and MRS. HINDS  
Music - Reading



MR. GARY ESTERGARD  
Art



MRS. BARBARA SHACKLETT  
English - Librarian



MR. GENE WEBER  
Social Studies - Coach - P.E.



MISS MARILYN HAFFEY  
Home Economics



MRS. CORRINE FICKEN  
Math



MR. and MRS. VANNIER  
Commercial



MR. VINCENT URBAN  
Coach



Seniors



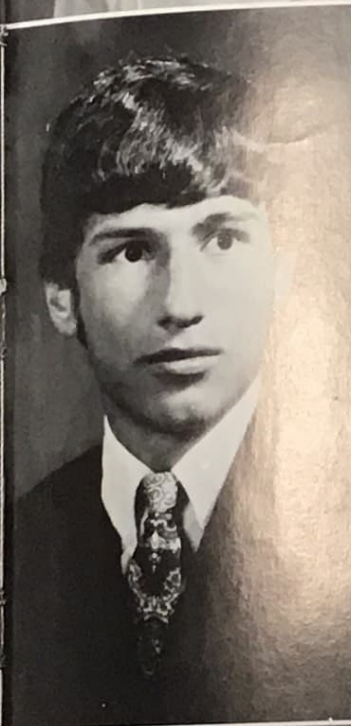
LYN McCOY

Pep Club 1, 2, 3, 4; Pep Club Award 1, 2, 3, 4; Mixed Chorus 1, 2, 3, 4; Girls Glee 1, 2, 3, 4; Accompanist 1, 2, 3, 4; Band 1, 2, 3, 4; Drum Majorette 4; Class Play 3; FHA 1, 2; County Government Day 3; Rotary Scholastic Award 2, 3; Class Officer 3; Inter High Day 1, 2, 3; Warrior Staff 3; Annual Staff 4; World Herald Correspondent 4; Homecoming Attendant 4



RICK WOLZEN

Mixed Chorus 1, 2, 3, 4; Boys Glee 1, 2, 3, 4; Class Play 3; County Government Day 3; Class Officer 1, 2, 4; Inter High Day 3; Student Council 3; Football 1, 2, 3, 4; Track 1, 2, 3, 4; Basketball 1, 2, 3, 4; A Club 3, 4; Officer 4; Annual Staff 4; Homecoming Attendant 4



DORAN SPRECHER

Mixed Chorus 4; Band 3, 4; Boys Glee 4; Student Council President 4



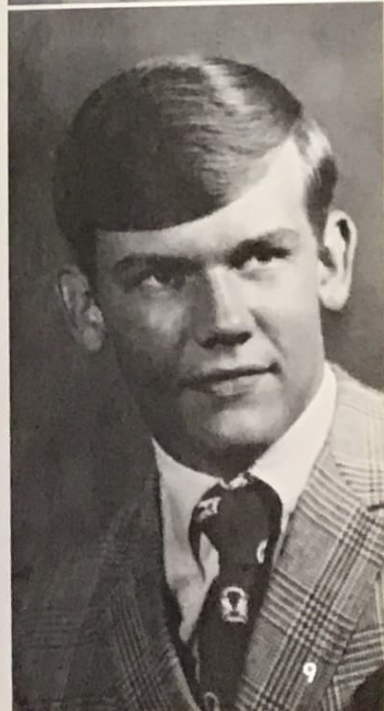
DEE FISHER

Pep Club 1, 2, 3, 4; Pep Club Officer 2, 3, 4; Pep Club Award 1, 2, 3, 4; Mixed Chorus 1, 2, 3, 4; Girls Glee 1, 2, 3, 4; Class Play 3; FHA 1, 2, 3, 4; FHA Officer 2, 3, 4; County Government Day 3; Girls State Alternate 3; Student Council 3; Warrior Staff 3, 4; Annual Staff 4; Homemaking Degree 1, 2; Homecoming Queen 4



JOANNE LARSON

Pep Club 1, 2, 3, 4; Pep Club Award 1, 2, 3, 4; Pep Club Officer 4; Mixed Chorus 1, 2, 3, 4; Girls Glee 1, 2, 3, 4; Accompanist 1, 2, 3, 4; Band 1, 2, 3, 4; Band Council 4; Class Play 3; FHA 1, 2, 3, 4; FHA Officer 2, 3, 4; Class Officer 1, 2, 3, 4; Warrior Staff 4

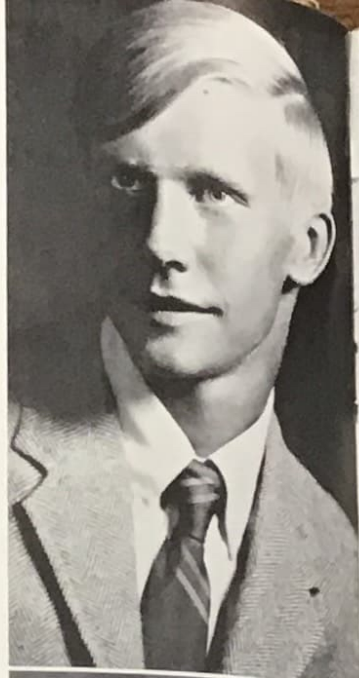


DAVE URBOM

Mixed Chorus 1, 2, 3, 4; Boys Glee 1, 2, 3, 4; Class Play 3; County Government Day 3; Class Officer 1, 2, 3; Football 1, 2, 3, 4; Track 1, 2, 3, 4; Basketball 1, 2, 3, 4; A Club 2, 3, 4; Boys State 3; Annual Staff 4; Homecoming Attendant 4

MARY ANN WENDLAND

Pep Club 1, 2, 3, 4; Pep Club Award 1, 2, 3, 4; Pep Club Officer 3; Mixed Chorus 1, 2, 3, 4; Girls Glee 1, 2, 3, 4; Band 1, 2, 3, 4; Class Play 3; FHA 1, 2, 3, 4; FHA Officer 2; County Government Day 3; Rotary Scholastic Award 2, 3; Inter High Day 1, 3; Librarian 4; Junior and Chapter Degrees 1, 2; Crisco Homemaker Award 1; Annual Staff 4



STEVE DANIELSON

Mixed Chorus 1; Boys Glee 1; Class Play 3; Inter High Day 2; Student Council 1; Football 1, 2; Track 1, 2; Basketball 1, 2, 3; A Club 2, 3, 4



DICK HERMES

Mixed Chorus 1, 2, 4; Boys Glee 1, 2, 4; Wrestling 1, 2



SANDY HILL

Pep Club 1, 2, 3, 4; Pep Club Award 1, 2, 3, 4; Mixed Chorus 1, 2, 3, 4; Girls Glee 1, 2, 3, 4; Band 1, 2, 3, 4; Majorette 1, 2, 3, 4; FHA 1, 2, 3, 4; Inter High Day 1; Warrior Staff 3; Class Play 3



PAT GATES

Pep Club 1, 2, 3, 4; Pep Club Award 1, 2, 3, 4; Mixed Chorus 1, 2, 3, 4; Girls Glee 1, 2, 3, 4; FHA 4; Warrior Staff 3, 4



MARLOW WESTERBECK

Mixed Chorus 1, 2, 4; Boys Glee 1, 2, 4; Football 1, 2, 3; Basketball 1



MARY BETH MUES

Pep Club 1, 2, 3, 4; Pep Club Award 1, 2, 3, 4; Cheerleader 2, 3, 4; Mixed Chorus 1, 2, 3, 4; Girls Glee 1, 2, 3, 4; Band 1, 2, 3, 4; Majorette 1, 2, 3, 4; Class Play 3; FHA 1, 2, 3, 4; FHA Officer 4; Inter High Day 3; Warrior Staff 3; Annual Staff 4; Homecoming Attendant 4



CANDACE EUBANKS

Pep Club 1, 2, 3, 4; Pep Club Award 1, 2, 3, 4; Mixed Chorus 1, 2, 3, 4; Girls Glee 1, 2, 3, 4; Band 1, 2, 3, 4; FHA 3, 4; FHA Officer 4; Warrior Staff 3, 4;



DOUG BRAKHAHN

Mixed Chorus 1, 2, 4; Boys Glee 1, 2, 4; Class Play 3



LOIS ZIEBELL

Pep Club 1, 2, 3, 4; Pep Club Award 1, 2, 3, 4; Mixed Chorus 1, 2, 3, 4; Girls Glee 1, 2, 3, 4; Class Play 3; FHA 1, 2, 3, 4; FHA Officer 3; Rotary Scholastic Award 2, 3; Class Officer 3, 4; Inter High Day 1; Warrior Staff 3, 4; Junior and Chapter Degrees 1, 2; District FHA Officer



JANET HILKER

Pep Club 1, 2, 3, 4; Pep Club Award 1, 2, 3, 4; Mixed Chorus 1, 2, 3, 4; Girls Glee 1, 2, 3, 4; FHA 1, 2, 3, 4; Class Officer 1, 4; Warrior Staff 3, 4; Junior Degree 2



DOUG WEBER

Mixed Chorus 1, 2, 3, 4; Boys Glee 1, 2, 3, 4; Class Play 3; County Government Day 3; Class Officer 1, 2, 3; Football 1, 2, 3, 4; Track 2, 3, 4; Basketball 1, 2, 3, 4; A Club 1, 2, 3, 4; All Conference Football 3; Boys State Alternate 3; Homecoming King 4

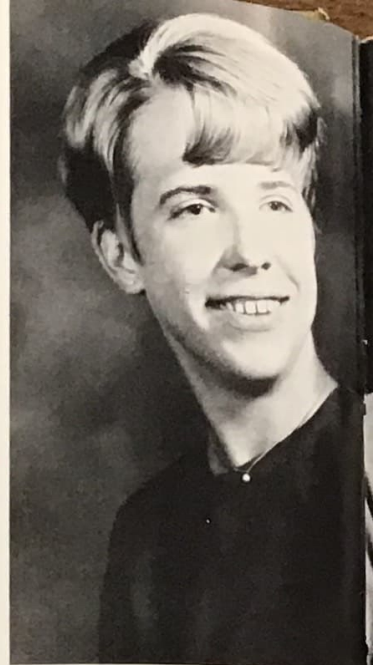


DAN SMITH

Mixed Chorus 1; Boys Glee 1; Football Student Manager 2, 3; A Club 2, 3; Wrestling 1

LARETTA HELMS

Pep Club 1, 2, 3, 4; Pep Club Award 1, 2, 3, 4; Mixed Chorus 1, 2, 3, 4; Girls Glee 1, 2, 3, 4; FHA 1, 2, 3, 4; FHA Award 2, 3, 4; Warrior Staff 3, 4; Junior, Chapter and State Degrees 1, 2, 3



DONNA EMS

Pep Club 1, 2, 3, 4; Pep Club Award 2, 3, 4; Mixed Chorus 1, 2, 3, 4; Girls Glee 1, 2, 3, 4; Band 1, 2, 3, 4; Majorette 2, 3, 4; Class Play 3; FHA 1, 2, 3, 4; County Government Day 3; Student Council 2; Warrior Staff 3



KIM DICKMEYER

Mixed Chorus 1, 2, 4; Boys Glee 1, 2, 4; Class Officer 3; Inter High Day 3; Football 1, 2, 3, 4; Track 4; Wrestling 1, 2, 3, 4; A Club 2, 3, 4; Officer 4; RVL Wrestling Champ 3



DON EMS

Mixed Chorus 1, 4; Boys Glee 1, 4; Class Play 3; County Government Day 3; Student Council 2; Football 1, 2, 3; Track 2, 3; Wrestling 1, 2, 3, 4; RVL Champ 3; A Club 2, 3, 4; Officer 4; Warrior Mascot 4



STEVE GRAF

Mixed Chorus 1, 2, 4; Boys Glee 1, 2, 4; Inter High Day 1; Football 1, 2, 3; Wrestling 1, 2





JUDY HILKER

Pep Club 1, 2, 3, 4; Pep Club Award 1, 2, 3, 4; Mixed Chorus 1, 2, 3, 4; Girls Glee 1, 2, 3, 4; FHA 1, 2, 3, 4; FHA Officer 4; Warrior Staff 3, 4; Junior Degree 2

MARY VAN METER

Pep Club 1, 2, 3, 4; Pep Club Officer 4; Cheerleader 2; Pep Club Award 1, 2, 3, 4; Girls Glee 1, 2, 3, 4; Class Play 3; FHA 1, 2, 3, 4; County Government Day 3; Class Officer 1; Warrior Staff 3, 4; Librarian 1, 4



DUANE VOSS

Mixed Chorus 1, 2; Boys Glee 1, 2; County Government Day 3; Class Officer 4; Football 1; Track 1; Basketball 1

ROGER TOOMEY

Mixed Chorus 1, 2, 3; Boys Glee 1, 2, 3; Wrestling 1, 2, 3; Class Play Stagehand



DONNA ESSLINGER

Pep Club 1, 2, 3, 4; Pep Club Award 1, 2, 3, 4; Mixed Chorus 1, 2, 3; Girls Glee 1, 2, 3; FHA 1, 2, 3, 4; Rotary Scholastic Award 3; Inter High Day 2, 3; Junior Degree 1

SHERALEE HEMELSTRAND

Pep Club 1, 2, 3; Pep Club Officer 2; Cheerleader 3; Pep Club Award 1, 2, 3; Mixed Chorus 1, 2, 3; Class Play 3; FHA 1, 2; County Government Day 3; Student Council 1, 3; Class Officer 2





CHRIS SCHAEPLER

Pep Club 1, 2, 3, 4; Pep Club Award 1, 2, 3, 4; Mixed Chorus 1, 2; Girls Glee 1, 2; FHA 1, 2; Warrior Staff 3; Librarian 3, 4; County Government Day 3; Girls State 3; Inter High Day 1; Rotary Scholastic Award 2, 3

MELVIN CHRISTENSEN

Mixed Chorus 1; Boys Glee 1; Class Play 3; Football 1, 2, 3, 4; Track 3; Basketball 1, 2, 3, 4; A Club 4



RON KARASH

Mixed Chorus 1, 3; Boys Glee 1, 3; Football 1, 2, 3, 4; A Club 2, 3, 4

JANE LEISING

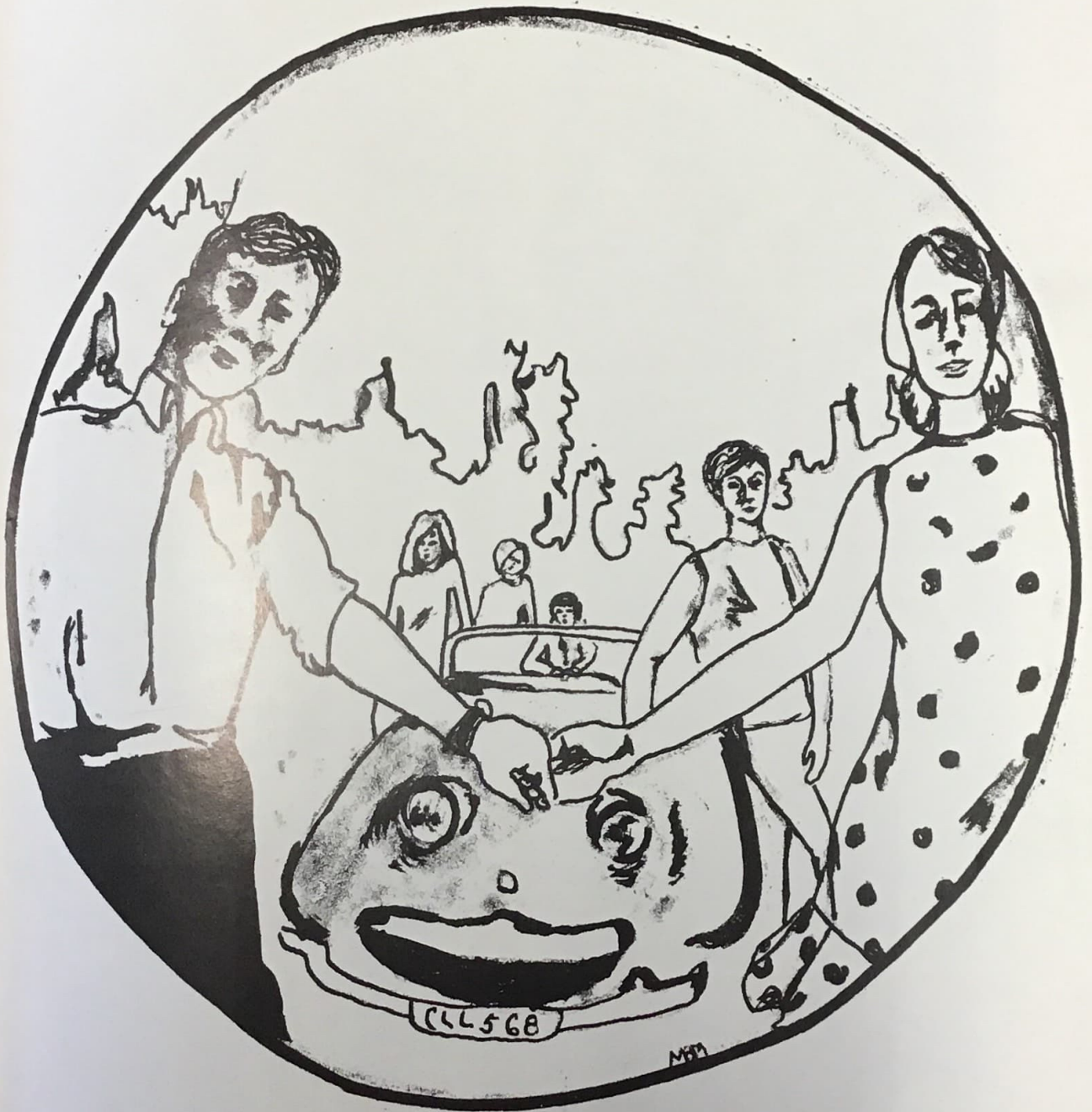
Pep Club 1, 2, 3, 4; Pep Club Award 1, 2, 3, 4; Mixed Chorus 1, 2, 3, 4; Girls Glee 1, 2, 3, 4; FHA 4



"Senior  
Spirits"





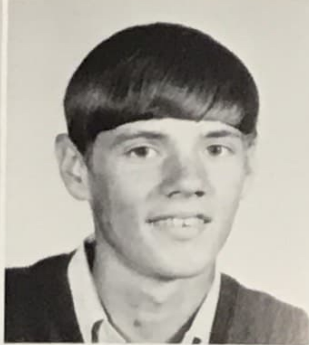


# Underclassmen

# Class of 1971

Jeannen Haussler  
Rick Hines  
Jane Hanson

Kathleen Johnson  
Gary Pfeiffer  
Nancy Smith  
William Schievelbein



Kelvin Wolzen  
Christine Faw  
Robert Upward

Karleeta Smith  
Irvin Walbridge  
Cindy Longsine  
Robert Ten Bense





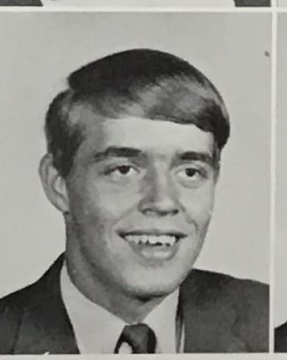
Terry Tracy  
Rose Quelle  
David Mues

Mary Luhman  
Lyle Weber  
Charlene Stanard  
Terry Busch



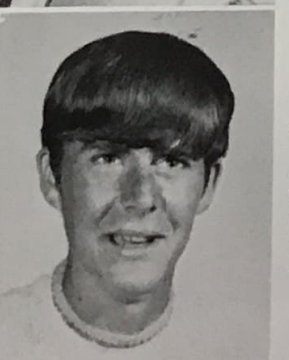
Dave Poore  
Linda Hilker  
Randy Steele

Glenn Sprecher  
Cynthia Hermes  
Gary Dickmeyer  
Delene Hays



Lynette Hess  
Charles Schaepler

John Tiedje  
Glen Sprague  
Cara Sue Monter  
Dave Collins





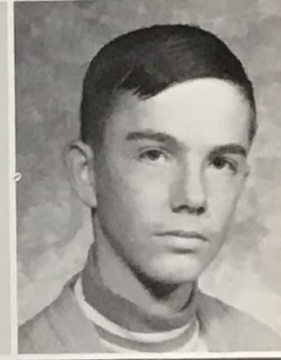
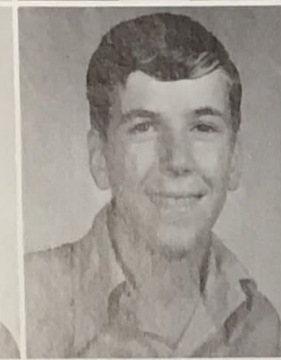
Russell Nelson  
Lori Billesbach  
Greg Hill  
Rita Morris

Connie Polston  
Dan Fisher  
Kathy Owens  
Jerry Willey  
Sue Wagner



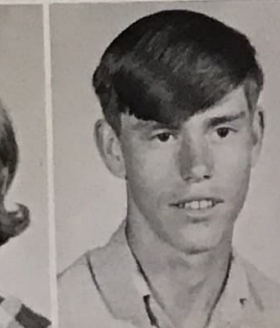
Linda Morse  
Gerald Graf  
Carol Runyan  
Robert Thayne

Cheryl Wilken  
Rand al Paine  
Bruce Sander  
Marilyn Larson  
Donald Herbert



Craig Johnson  
Debra Pearson  
Gerald Brakhahn

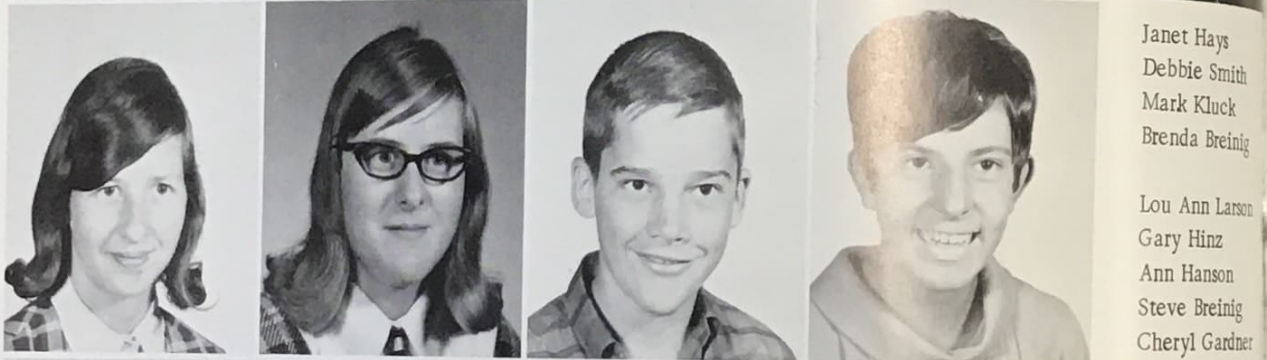
Rhonda Walbridge  
Randy Danielson  
Cynthia Schutz  
Phil Leising



# Class of 1973

Sherry Leach  
Larry Pfeiffer  
Jane Wendland  
Tim Larson

Ruth Haussermann  
Roger Girch  
Jeryl Mather  
David Kreis  
Rhonda Helms



Janet Hays  
Debbie Smith  
Mark Kluck  
Brenda Breinig

Lou Ann Larson  
Gary Hinz  
Ann Hanson  
Steve Breinig  
Cheryl Gardner





Angela Busch  
John Ziebell  
Debbie Wolf

Stephen Olmsted  
Ingrid Ann Morris  
Steve McCoy  
Karen Dawson



Candy McCoy  
Jill Haussler  
Larry Owens

Doug Breinig  
Bonnie Shaffer  
Matt Faw  
Sherry Hilker



Peggy Hill  
David Priest

John Crawford  
Donna Christensen  
David Vannier  
Donna Paine



# Class Officers



SOPHOMORES - Randy Danielson, News Reporter; Marilyn Larson, Treasurer; Linda Morse, Secretary; Russ Nelson, Vice-President; Dan Fisher, President.



SENIORS - Lois Ziebell, President; Duane Voss, Vice-President; Jo Larson, Secretary; Janet Hilker, News Reporter; Rick Wolzen, Treasurer.

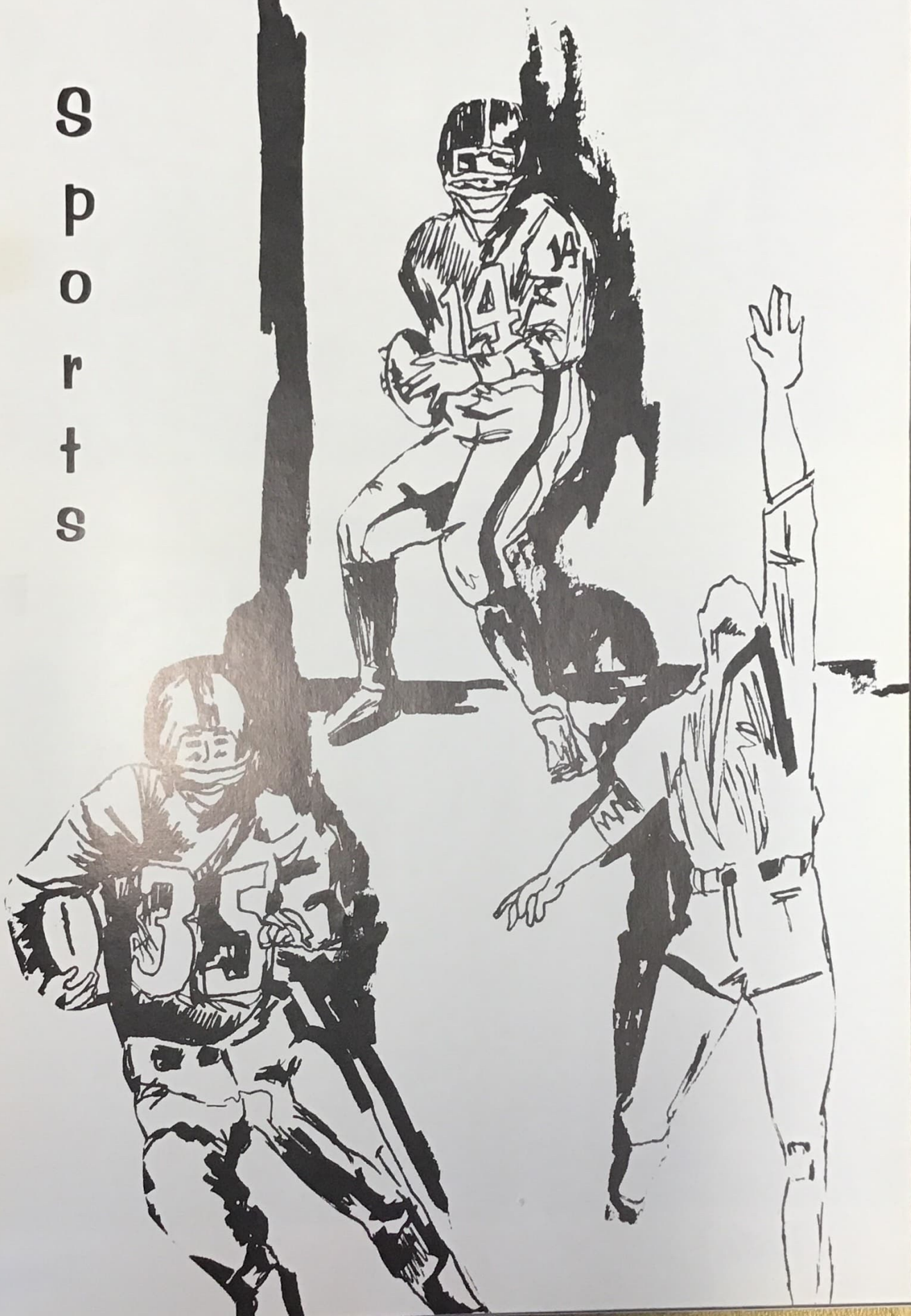


JUNIORS - Chuck Schaepler, Vice-President; Gary Dickmeyer, News Reporter; Cindy Longsine, Secretary; Glenn Sprecher, Treasurer; Kelvin Wolzen, President.



FRESHMEN - Rhonda Helms, Secretary; Cheryl Gardner, Treasurer; Donna Paine, News Reporter; Peggy Hill, President; Stephen Olmsted, Vice-President.

S  
p  
o  
r  
t  
s







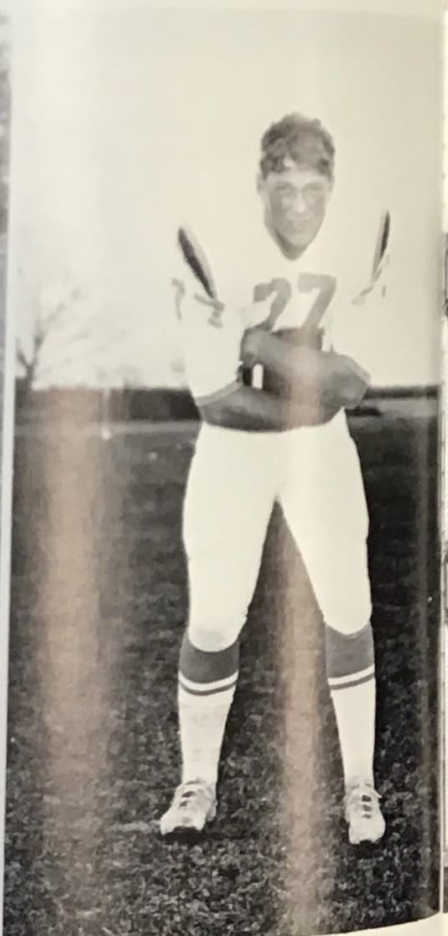
## Seniors



Rick



Dave



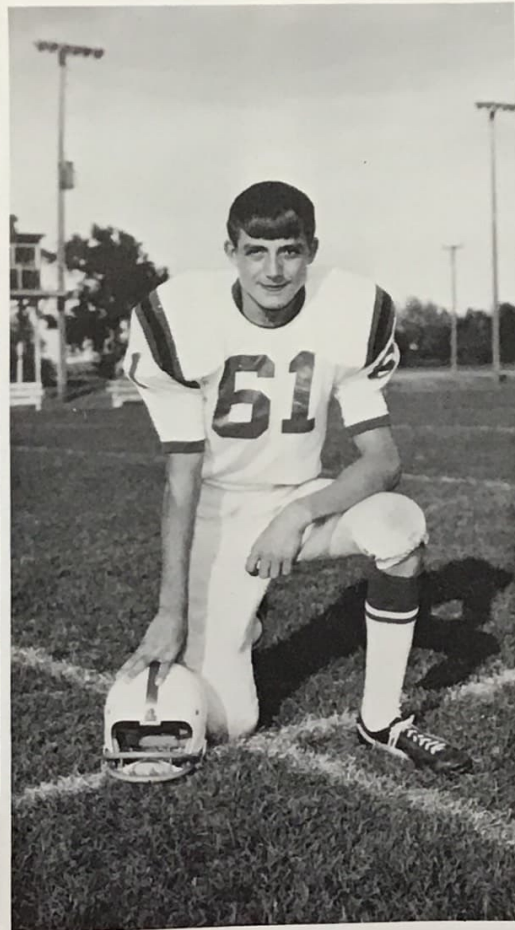
Doug



## Seniors



Ron



Kim



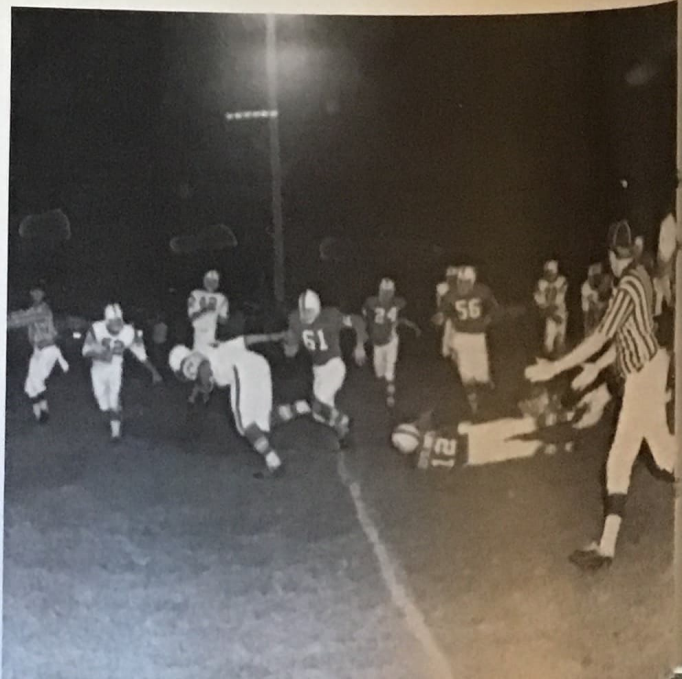
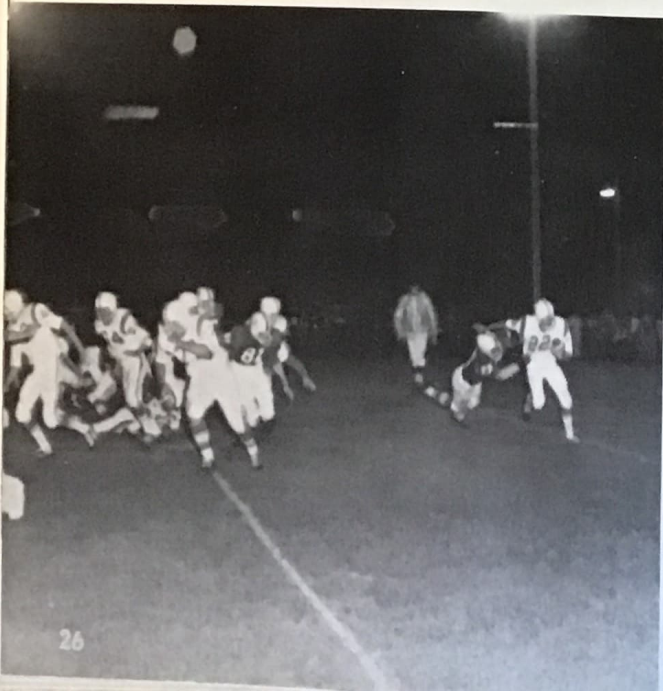
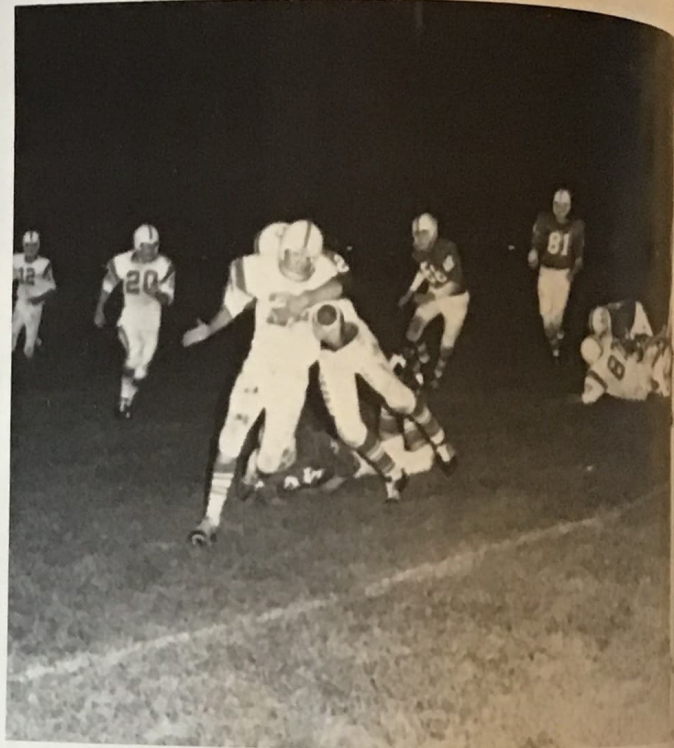
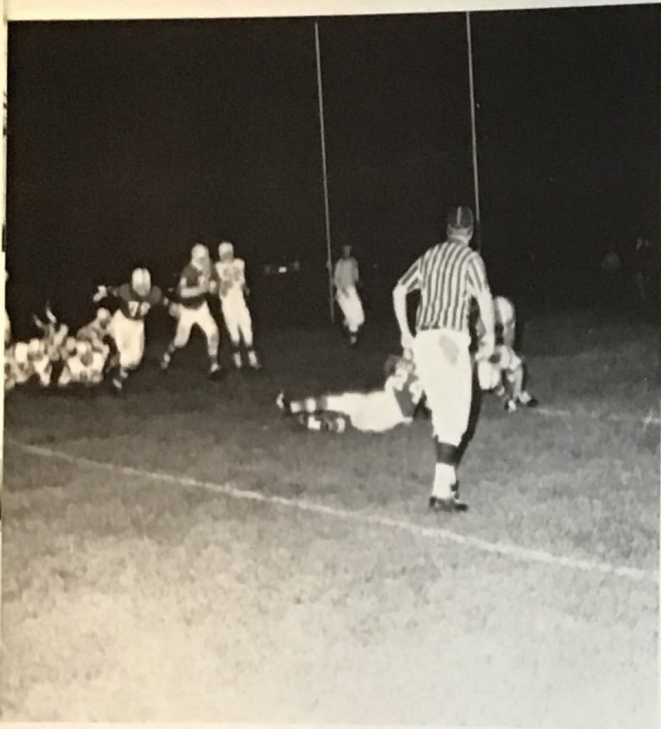
Mel

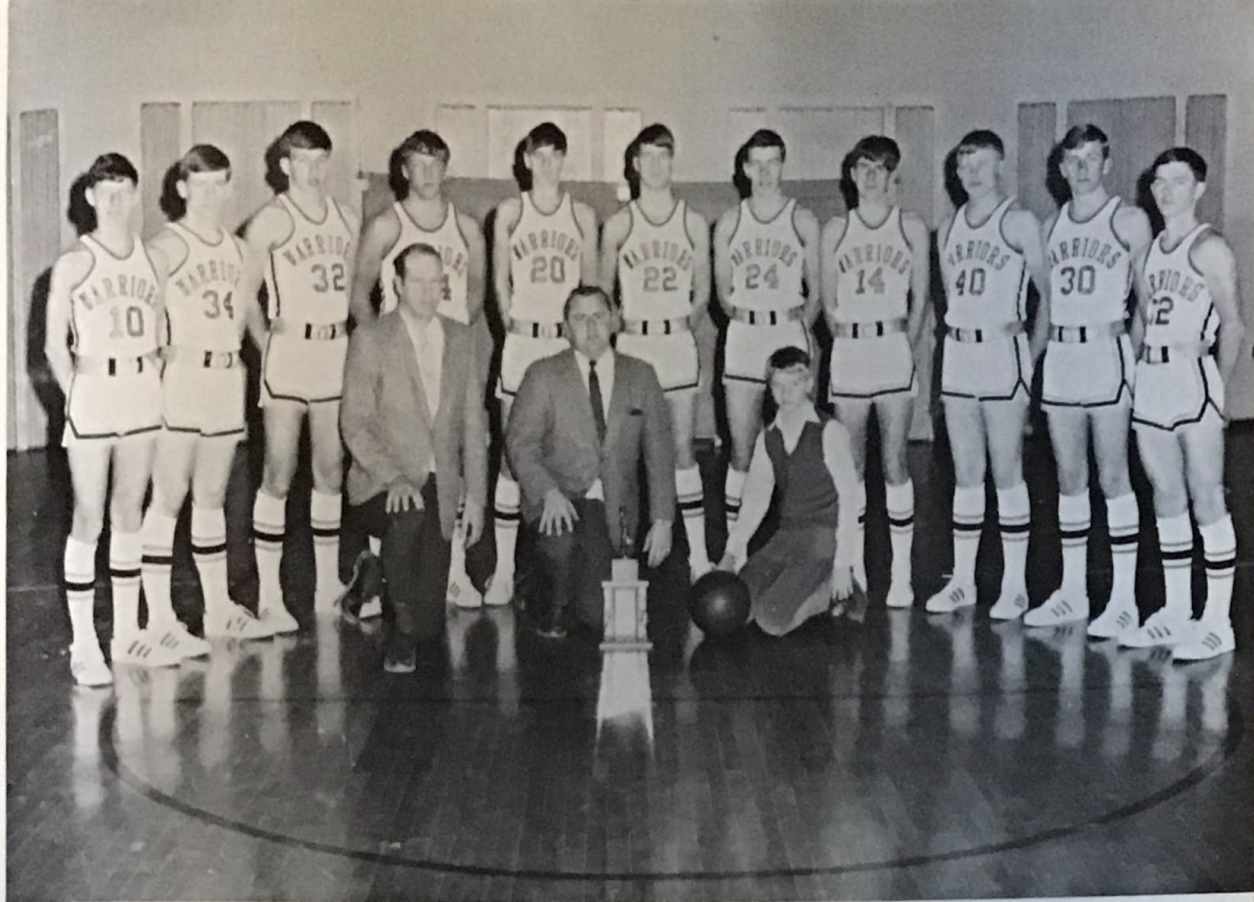
SCORES

ARAPAHOE	OPPONENT	SCORE
0	Oxford	28
18	Medicine Valley	-0
0	Elwood	12
14	Lex. St. Anns	0
24	Franklin	20
36	Bertrand	0
20	Alma	19
12	Beaver City	20
0	Cambridge	33

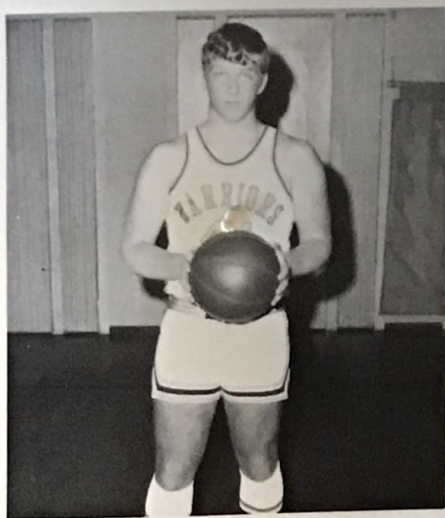


# Warriors in Action

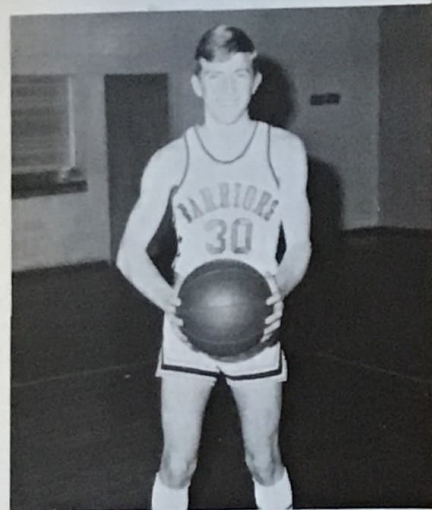




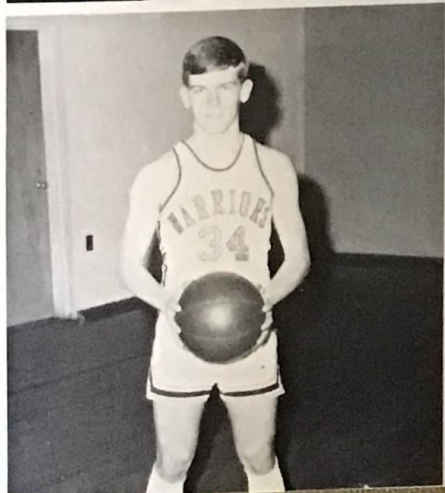
### Varsity



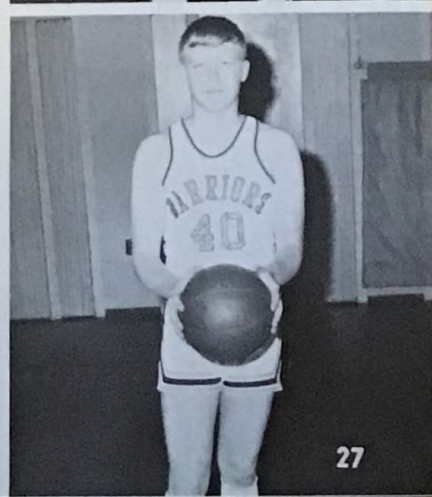
D  
o  
u  
g



R  
i  
c  
k



D  
a  
v  
e



M  
e  
l

S  
e  
n  
i  
o  
r  
s

SCORES

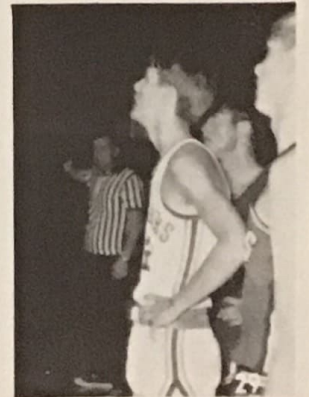
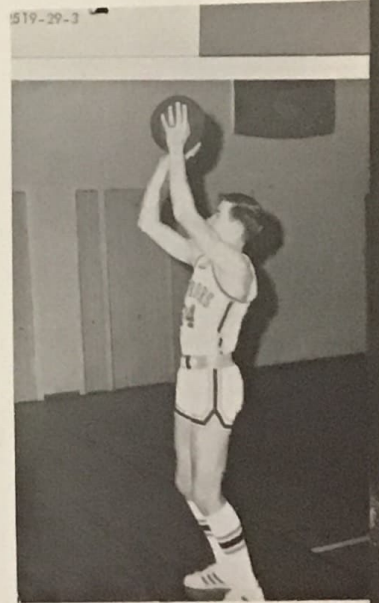
ARAPAHOE	OPPONENT	SCORE
62	Oxford	57
55	St. Ann's	58
52	Medicine Valley	60
58	Alma	64
49	Republican Valley	71
95	Eustis	42
72	Republican City	62
57	Cambridge	61
71	Franklin	52
93	St. Ann's	67
53	Beaver City	67
62	Cambridge	87
43	Bertrand	53
62	Elwood	60
48	Beaver City	55
86	Bartley	63
63	Cambridge	75
68	Red Cloud	68



J  
u  
n  
i  
o  
r

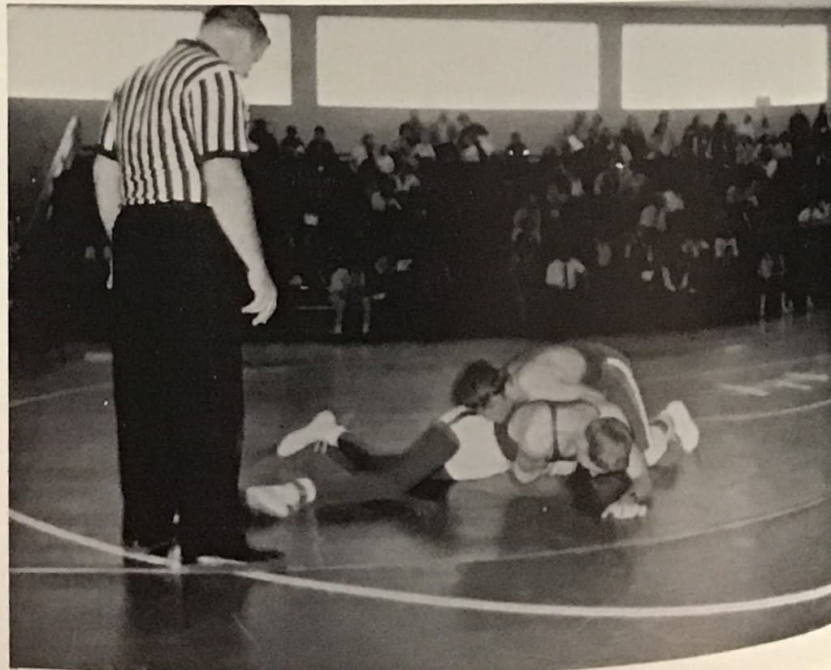
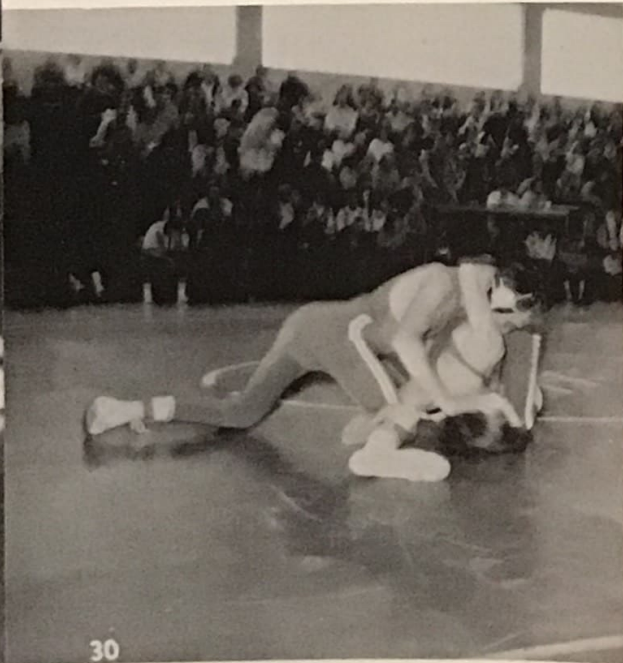


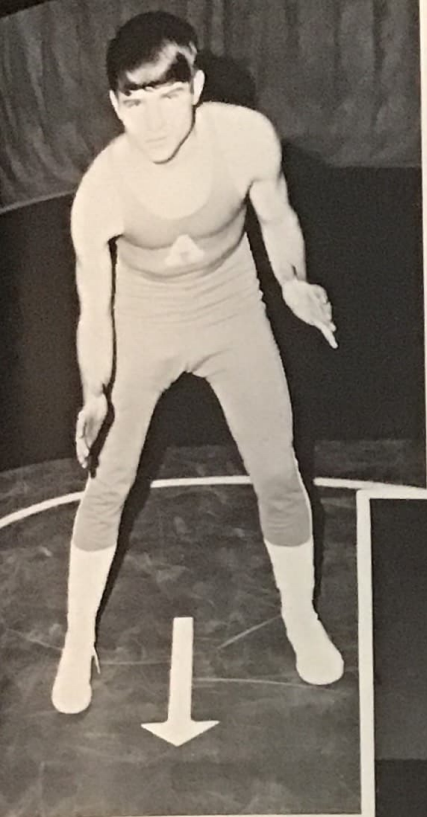
## Varsity





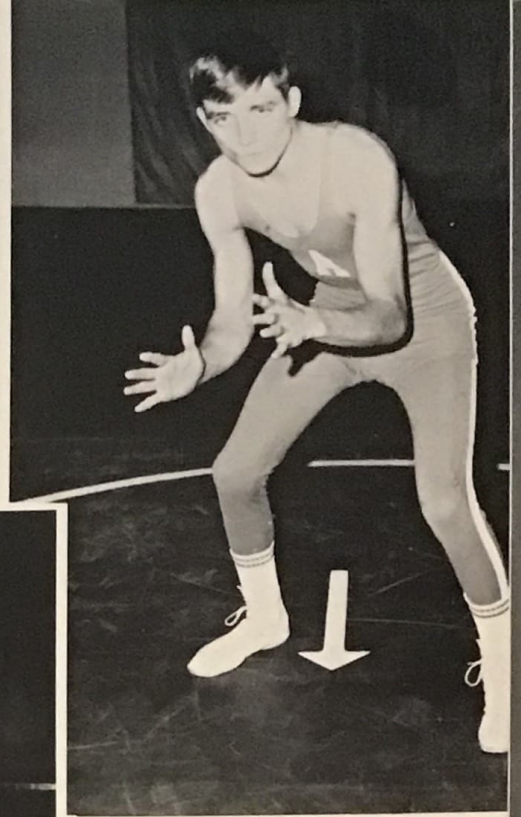
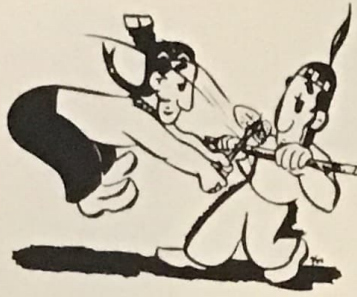
## Wrestling





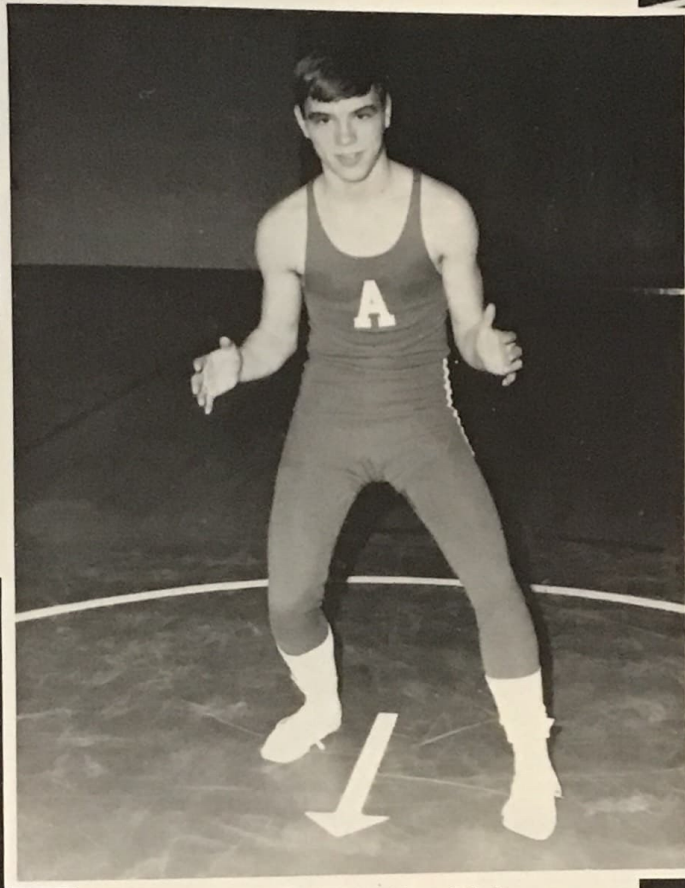
DON EMS Sr. 18-8

3rd Bertrand Inv.  
3rd RVL  
3rd District  
State Qualifier



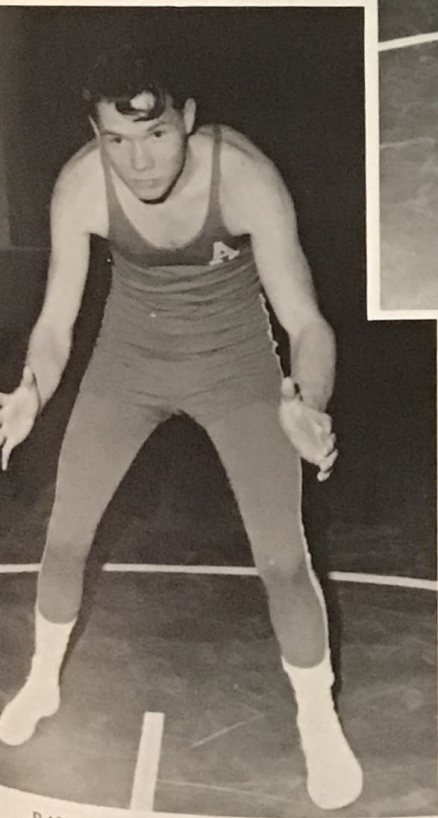
KIM DICKMEYER Sr. 11-6

2nd Bertrand Inv.  
2nd RVL



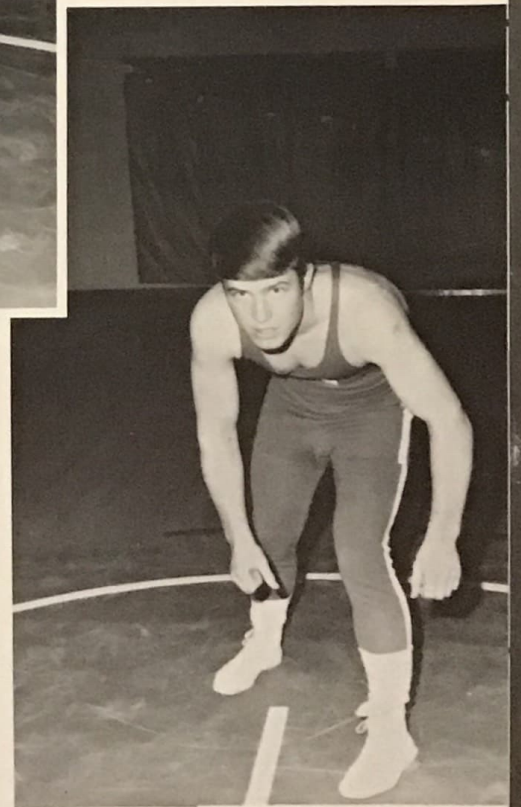
RANDY STEELE Jr. 24-2

2nd Bertrand Inv.  
RVL Champion  
District Champion  
3rd State



RANDY BARNES Soph. 11-8

4th Bertrand Inv.  
3rd RVL  
3rd District  
State Qualifier



GREG HILL Soph. 18-6

3rd Bertrand Inv.  
RVL Champion  
2nd District  
State Qualifier

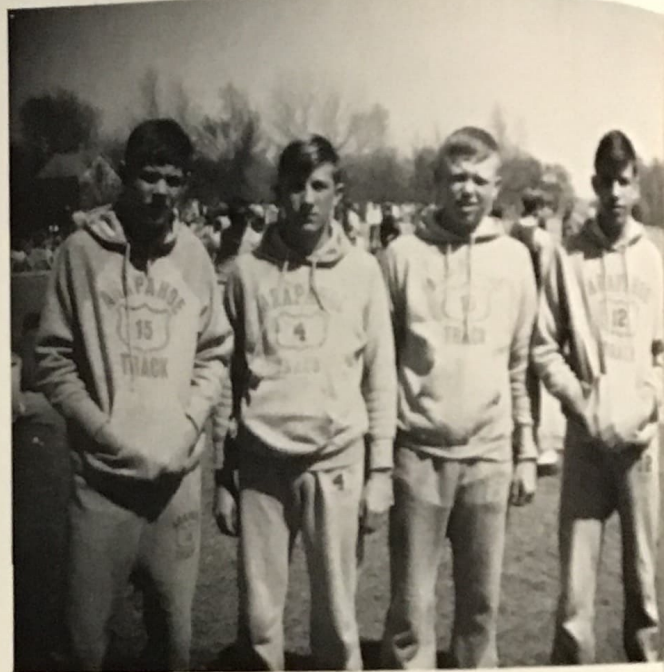


# Track



## 1970 TRACK MEETS

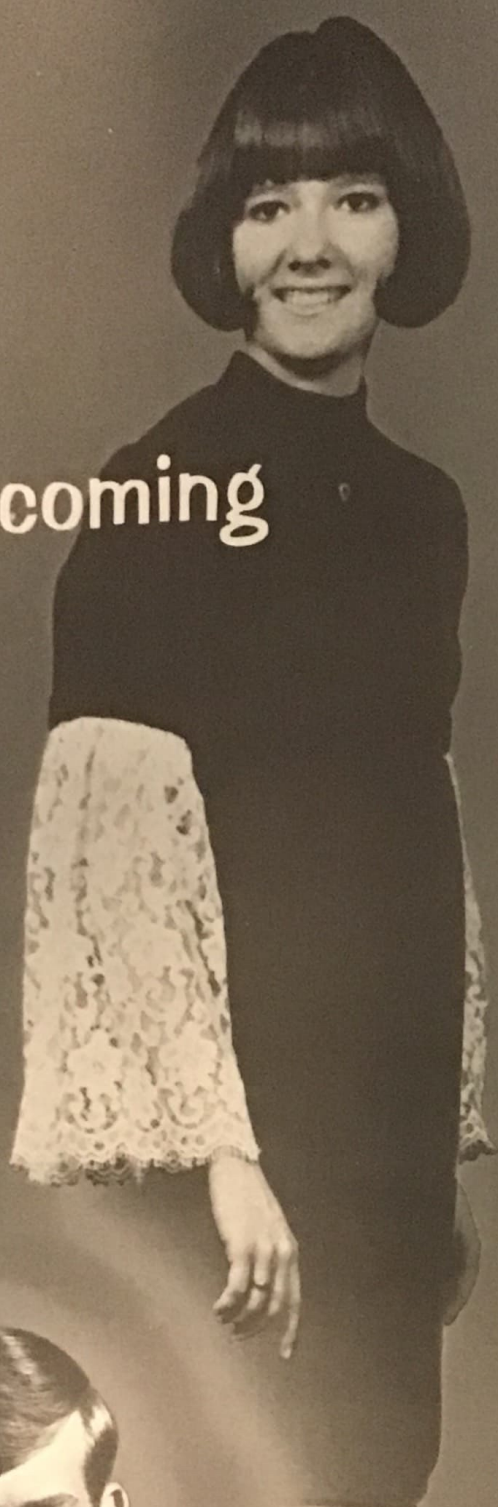
Arapahoe Inv.  
Mid-Valley  
Dual-Oxford  
Alma Inv.  
Freshman Inv.  
Bertrand Inv.  
Arapahoe Triangular  
Kearney Inv.  
R. V. L.  
District  
State



# Activities



# Homecoming





Royalty



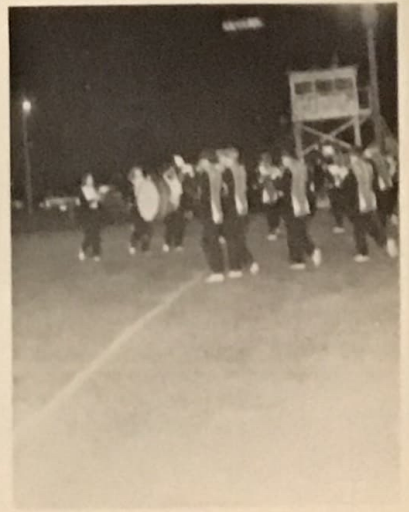
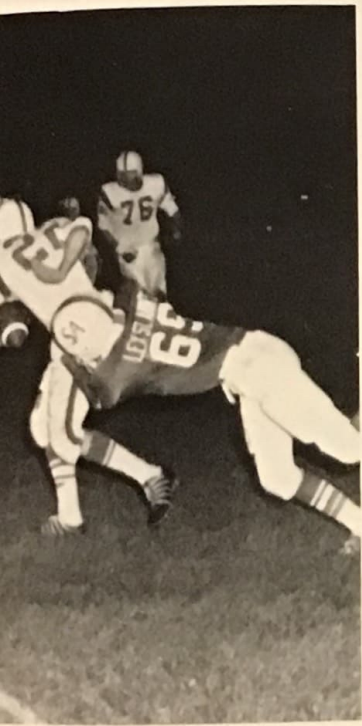
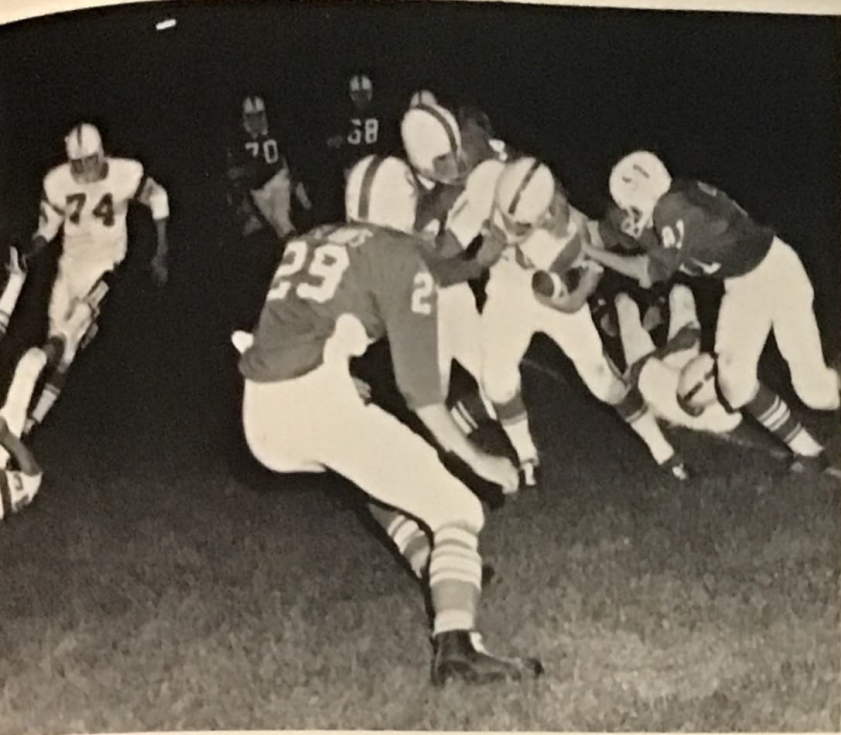
# H O M E C O M I N G

## 69-70



First Attendants: RICK WOLZEN and MARY BETH MUES  
King and Queen: DOUG WEBER and DEE FISHER  
Second Attendants: DAVE URBOM and LYN McCOY







## Pep Club

Boosting the Spirit of the mighty Warriors was a job handled with enthusiasm by the Pep Club and Cheerleaders. Mary Beth kept us all busy and having a lot of fun with the yells she learned at Chadron Clinic.

Pep Club activities included fostering school spirit, concessions, organizing the '69 - '70 Homecoming festivities, and sponsoring the annual Sweetheart Prom.





BASKETBALL

Cheerleaders 69-'70



VARSITY: Mary Beth, captain; Cindy; Karleeta; Chris; Mary; and Lynette, assistant.

JR. VARSITY: Carla, captain; Connie; Karen; and Rhonda.



FOOTBALL



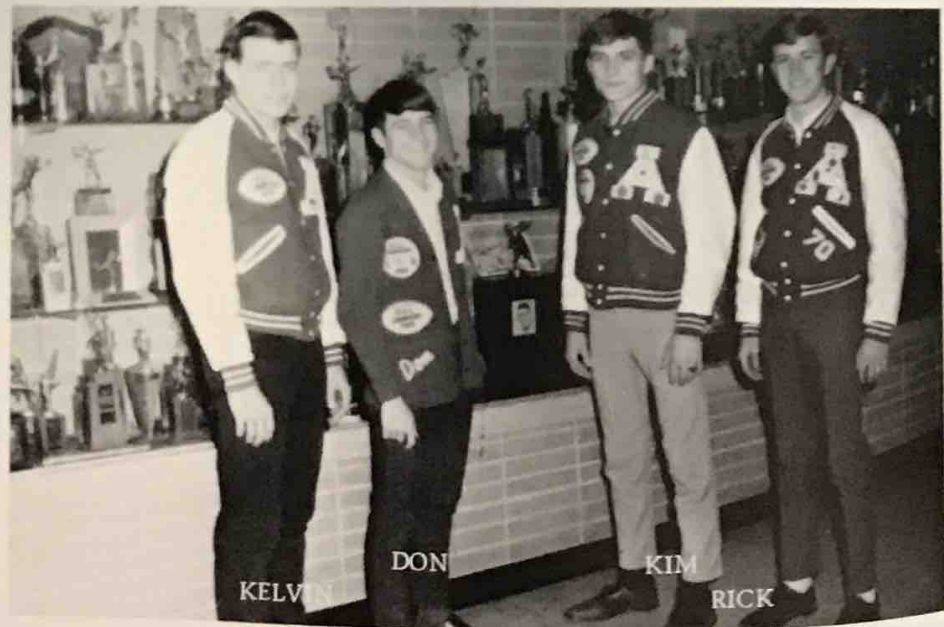


## "A" Club

The "A" Club under the sponsorship of Mr. Don McCord and Mrs. Gene Weber kicked off the year by writing a much needed Constitution.

On the 16th, 17th, and 19th of February the "A" Club sponsored a Freshman-Sophomore Basketball Tournament. This was a money-making project for the group and also gave the freshmen and sophomores a little experience in the game of basketball.

The fellas of the "A" Club closed the active year by helping the Pep Club decorate for the annual Sweetheart Prom.





**Band Council**



**Majorettes**



**Flute Trio**

**B  
a  
n  
d  
  
G  
r  
o  
u  
p  
s**



**Clarinet Quartet**

# Arapahoe High Band



Revolving around special and annual performances, the A.H.S. Band, directed by J. P. Hinds, worked toward the culmination of a successful year. Keeping Warrior spirit soaring, the Marching Band traveled to Lincoln, Nebraska, for the Shrine Bowl; McCook, Nebraska, for Band Day; Edison, Nebraska, for Market Days; and Fort Collins, Colorado, for the University Band Day. These trips were in addition to the excitement of home parades and football games. Concert engagements were headlined by the District Music Contest (Let's try for a 1+1!) and included R.V.L., Band Clinic, Christmas Concert, and Spring Concert.



# Band



Horn Trio



Brass Sextet



Saxophone Trio

# Groups



Clarinet Choir



## A.H.S. Mixed Chorus

The Arapahoe High School Mixed Chorus with ninety-four members had a busy year filling the halls of A.H.S. with music. Under the direction of Mr. James Hinds, we attended RVL Choral Clinic at Lexington in December, presented the Christmas and Spring Concerts, and attended District Music Contest. With Jo Larson and Lyn McCoy as accompanists, we made 7th period on Fridays a time of good fun and good music.



ENGAGEMENTS  
R, V, L, Choral Clinic  
Christmas Concert  
Spring Concert  
District V Contest

Girls' Glee  
**Araphoe High**  
Boys' Glee



# A.H.S. Exchange Students

Exchange programs foster good will between nations, and promote understanding of personal and national ideals. This year we were fortunate enough to have two exchange students at A.H.S. They have certainly added a lot to our year, and we hope we have made their stays memorable.

Lowen Jeane Partridge is from Adelaide, Australia, capitol of South Australia, and the third largest city in Australia.

Lowen is 17 years old and a graduate of Methodist Ladies College, an all girls school in Adelaide. She will be attending either Bedford Park Teacher's College, or Flender's University, both in Adelaide, when she returns to Australia.

Lowen was sponsored by the Rotary Exchange Program, and the first of several families she will be staying with, is the Mr. and Mrs. Darwin Johnson family.

Her first impression of the U.S. was that it is a very fast living country with people very similar to those elsewhere in the world.

Lowen has included several activities in her schedule this year. Pep club, F.H.A., Sr. money-making projects, the Sr. class play, and Sr. sneak are some of them.



Teofilo Cavalcanti is from Brasilia the capitol of Brazil, in South America. He is staying in the home of the Glen Vanniers', and will be in the U.S. till June.

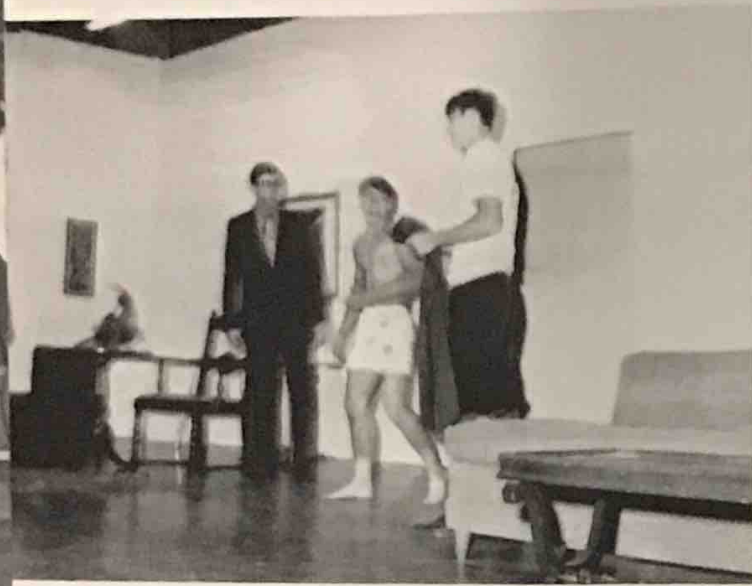
"Teo" is 16, and came to the U.S. through the Youth for Understanding Exchange Program. He wanted to come to the United States to improve his English, to travel to another country, and to meet and to get to know other people. He attended high school in Brasilia, and will continue there when he returns home.

Teo was surprised when he arrived here to see snow, since he had never seen it before.

# "We Shook The Family Tree"

## Junior Class Play Cast

CHRIS FAW	- - - - -	Hildegarde
KARLEETA SMITH	- - - - -	Sally
DELENE HAYS	- - - - -	Mrs. Shermer
JANE HANSON	- - - - -	Mrs. Dolson
CHARLENE STANARD	- - - - -	- Jill
MARY LUHMAN	- - - - -	Ellie May
CHUCK SCHAEPLER	- - - - -	Freddie
GLENN SPRECHER	- - - - -	Mr. Shermer
ROBERTTEN BENSEL	- - - - -	Bob
RANDY STEELE	- - - - -	Jimmy
TERRY BUSCH	- - - - -	Mr. Dolson
NANCY SMITH	- - - - -	Paige







# F.H.A.

## Officers

- Mary Luhman
- Mary Beth Mues
- Linda Morse
- Delene Hays
- Jo Larson - President
- Nancy Smith
- Judy Hilker
- Candace Eubanks
- Dee Fisher
- Miss Haffey - Advisor
- Karen Kluck





# Student Council

## OFFICERS

Doran Sprecher - Pres.  
 Mark Kluck - V. - Pres.  
 Lynette Hess - Treas.  
 Randy Paine - Sec.  
 Mr. Howard Davis - Advisor

## REPRESENTATIVES

Donna Ems - Senior Class  
 Dave Collins - Junior Class  
 Carla Schievelbein - Sophomore Class  
 Debbie Wolf - Freshman Class  
 Lowen Partridge  
 Teofilo Cavalcanti

The Student Council kicked off their busy year by adding the finishing touches to the Parent-Student Handbook. Next on their list of activities was money-making projects for the Homecoming dance. The representatives sold the tickets for the dance and sponsored a car "bash" to help supply the funds.

On Nov. 15th the group headed for North Platte to attend the National Association of Student Councils Convention. They were all impressed and more aware of their purpose as a Student Council with an agreement that it was time well spent.

Back home again found them preparing for the Christmas Dance on Dec. 23rd. This fun-filled evening was a change of atmosphere for any students looking for a good time.

At the beginning of the second semester the Student Council, along with the student body extended a warm welcome to Lowen and Teofilo. These youth automatically became representatives on the council.

Through the hard work and long hours of planning, the Student Council has established itself well for this year and maintained a good foundation for the councils in the coming years.

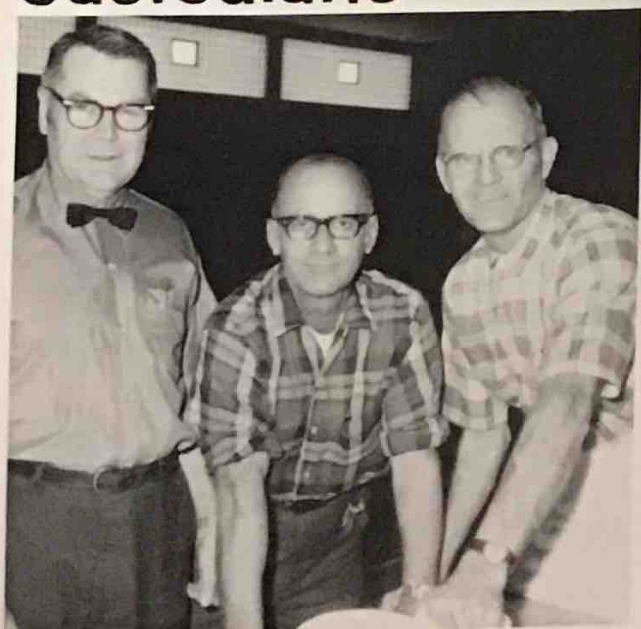


## Warrior Staff

A newspaper has only one objective, and that is to inform. Our high school paper, the WARRIOR, has tried valiantly to inform the student body. The various pages, editorial, features, gossip, sports, and art pages all have been as informative as our censor would let them be. The five issues of the WARRIOR that were put out this year all had something special about them and they were all fun to put out!

Lois Ziebell	Kathy Johnson
Candy Eubanks	Pat Gates
Janet Hilker	Dee Fisher
Laretta Helms	Charlene Stanard
Judy Hilker	Mary Luhman
Jo Larson	Mary Van Meter
Jean Haussler	Mr. Vannier, Sponsor

## Custodians



ORVIN, RICH and REIN

## Cooks



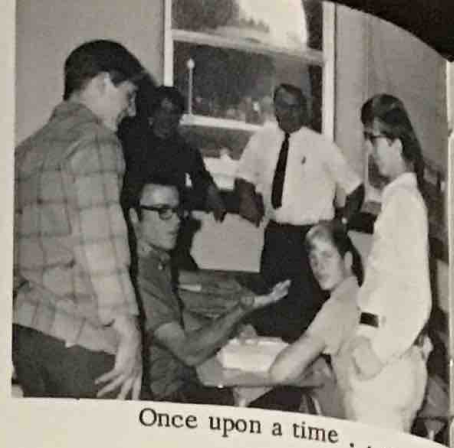
MRS. BREINIG, MRS. JOHNSON, MRS. WENDLAND,  
MRS. STANARD, and MRS. MILLER



Frustration - Elimination



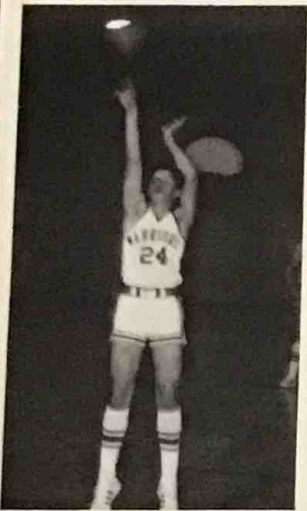
A. Open mouth . . .  
B. Insert Foot!



Once upon a time . . .



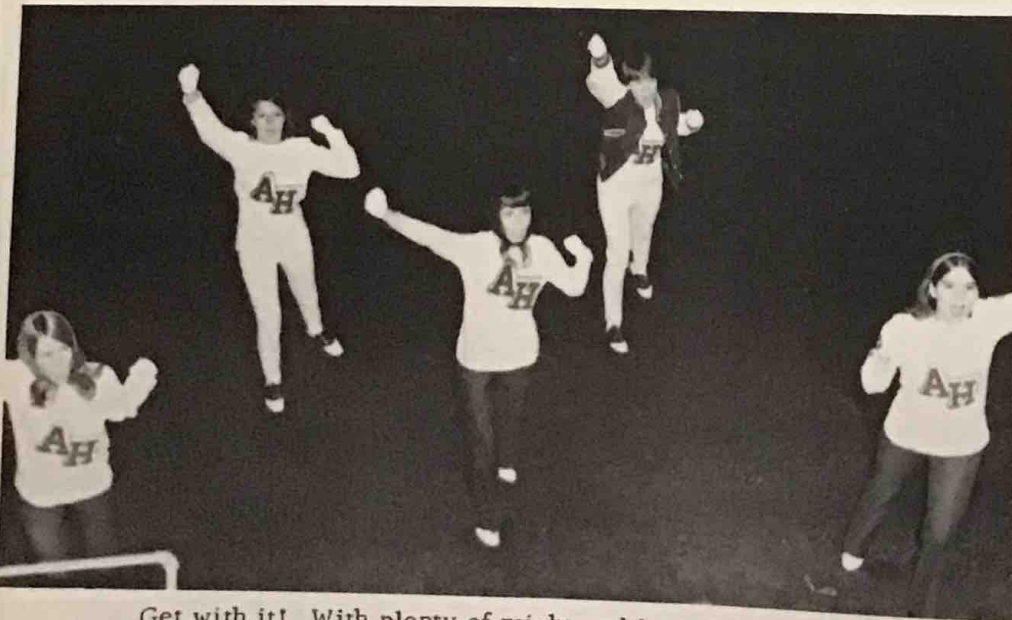
You go get that - we'll meet out there -  
and THEN . . .



Whееееееееее!!



Annual Editor - All work and NO PLAY!!!



Get with it! With plenty of might and lots of fight?



Up, Up, and Away!



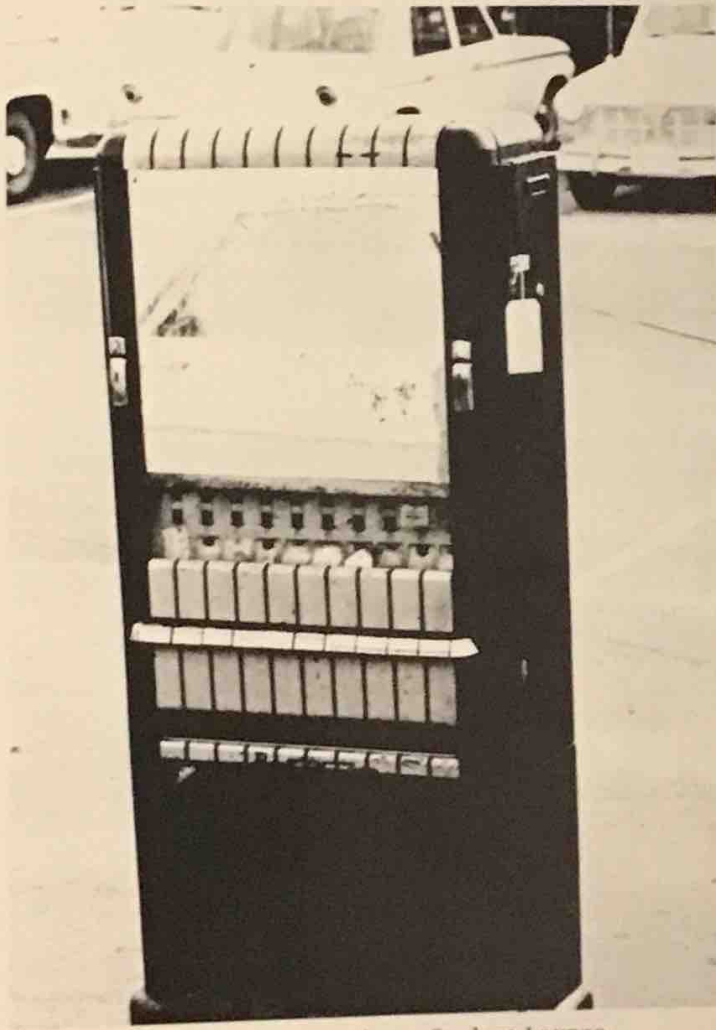
Maxi's may be "IN", but Mini's get more attention!



Dedicated to the Sophomores.



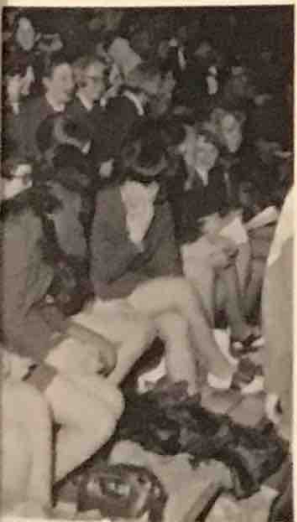
Fritz



For those of you wanting a Student Lounge.



Them's duking grounds!



"Did you know?"

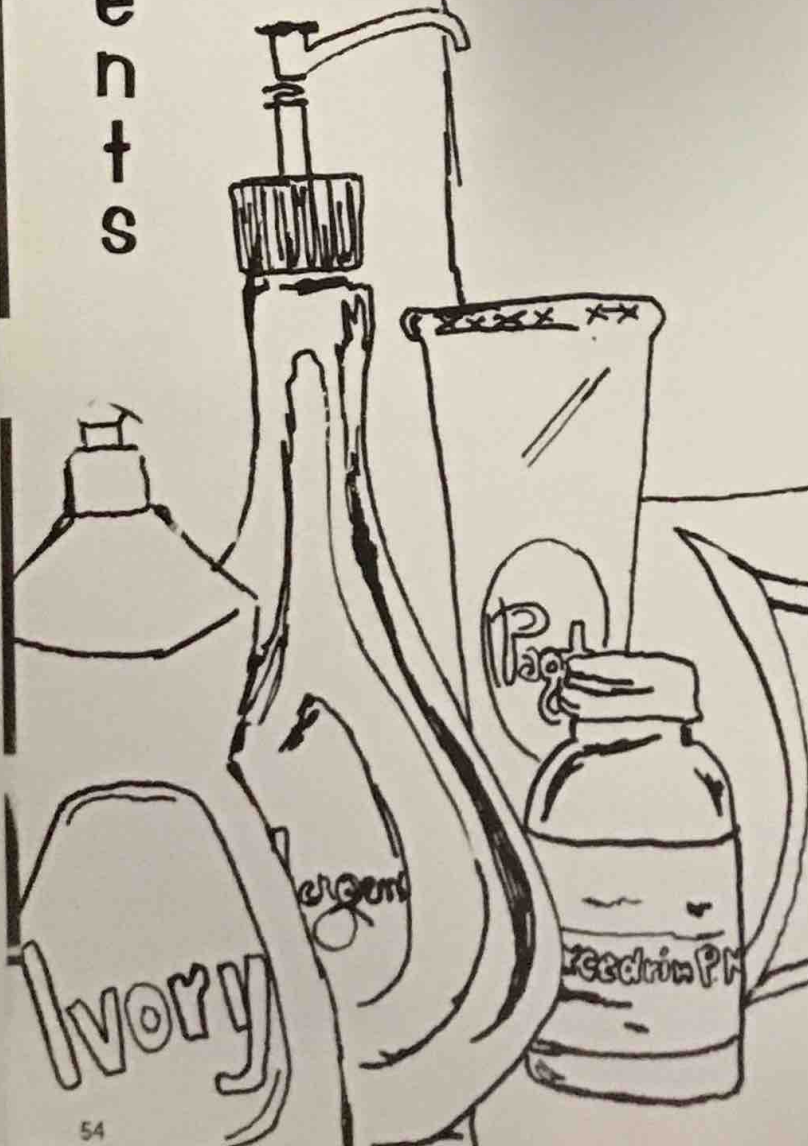
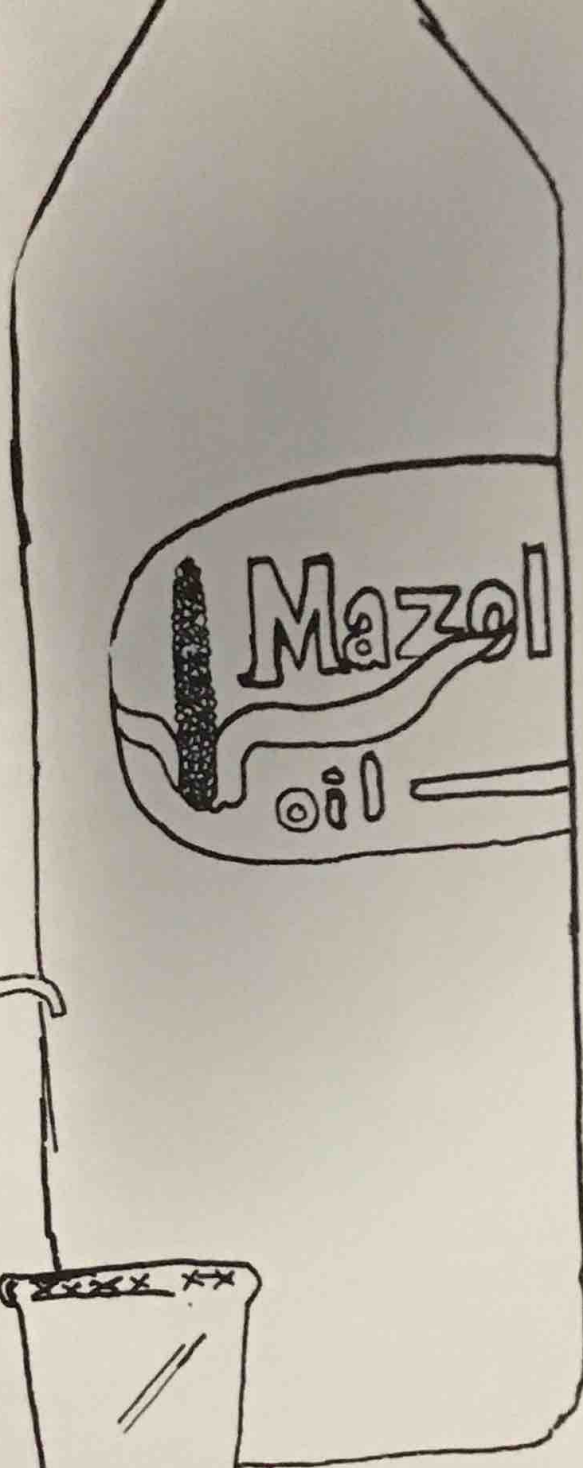


Beautify America - Get a haircut!



OH!! For the life of an undertaker . . .

Advertisements



Sale!

# OUR THANKS TO ALL OF THESE CONTRIBUTORS

McCOY AUCTION and REAL ESTATE STACY and JAKE	LIFE BAKERY
BUSCH'S STANDARD STATION JERRY and DUANE	WATSON - MUELLER INTERNATIONAL - HARVESTER
N. S. W. CONSTRUCTION	H. A. C. TRANSPORT Arapahoe, Nebraska
Bowl at MID VALLEY LANES	ARAPAHOE TELEPHONE COMPANY
DONNA'S BEAUTY SALON Edison, Nebraska	BOB'S HAULAWAY SERVICE
EDISON CONOCO Edison, Nebraska MR. and MRS. ALVIN COLLINS	MORRIS DRUG STORE
ARAPAHOE ELECTRIC SHOE SHOP	MR. and MRS. WARD URBOM
KELA'S BEAUTY SHOP	LEWIS BROS. GROCERY
FARMERS GRAIN & FARM SUPPLY CENTER RON ELIASON	WILLIAMS BROS. Your Family Department Store
MAGORIAN'S REXALL	HEMELSTRAND'S HARDWARE
IRENE'S STYLE SHOP	ARAPO COURT

CITIZENS STATE BANK  
Bank With the "Citizens"  
Your Full Service Bank  
Member F. D. I. C.

THE FOLLOWING FIRMS AND INDIVIDUALS

HAVE SPONSORED THE 1970 WARRIOR

ARAPAHOE READY MIX	KOELMEL'S BARBER SHOP
ARAPAHOE TAVERN "Always Welcome"	SANDER FURNITURE and FLOOR COVERING
ARAPAHOE SERVICE CENTER GORDON MONIE	SCHRODER'S CLEANERS
WILLIAMSON & HAASE FUNERAL HOME	COAST TO COAST STORES
WAGNER'S SUPERMARKET DRESS SHOP & VARIETY BASEMENT	DAHMS' DRIVE-IN
S & W AUTO PARTS DEAN WOLZEN - Manager	CUNNINGHAM'S FEED and PRODUCE
LAMMEL PLUMBING & HEATING	UPWARD'S SERVICE STATION
ESTERGARD FLORAL & GIFT Cambridge - Phone 697-3800	JOE'S PACKAGE DRIVE-IN
ARAPAHOE GRAIN COMPANY	C. A. MUES MEMORIAL Good Samaritan Center
DERBY CAFE	GATES TEXACO SERVICE
BOWMAN'S SIXTY-SIX SERVICE	"Congratulations Class of 1970" HABERMAN'S STUDIO 310 Norris Ave. McCook, Nebraska
ARAPAHOE COOPERATIVE ASSOCIATION	

SCHROEDER LUMBER CO., INC. Lumber, Paint, Building Material Builders Hardware	MAGNETO ELECTRIC SHOP
	JAMES' RECREATION
ELAND RADIO & T-V	PUBLIC MIRROR
BELLAMY BROS. IMPLEMENT	BELLAMY INSURANCE AGENCY

EMMETT INSURANCE AGENCY INC.  
Office: Citizens State Bank Building  
"It Is Better to Have Insurance and Not Need It,  
Than to Need Insurance and Not Have It."



