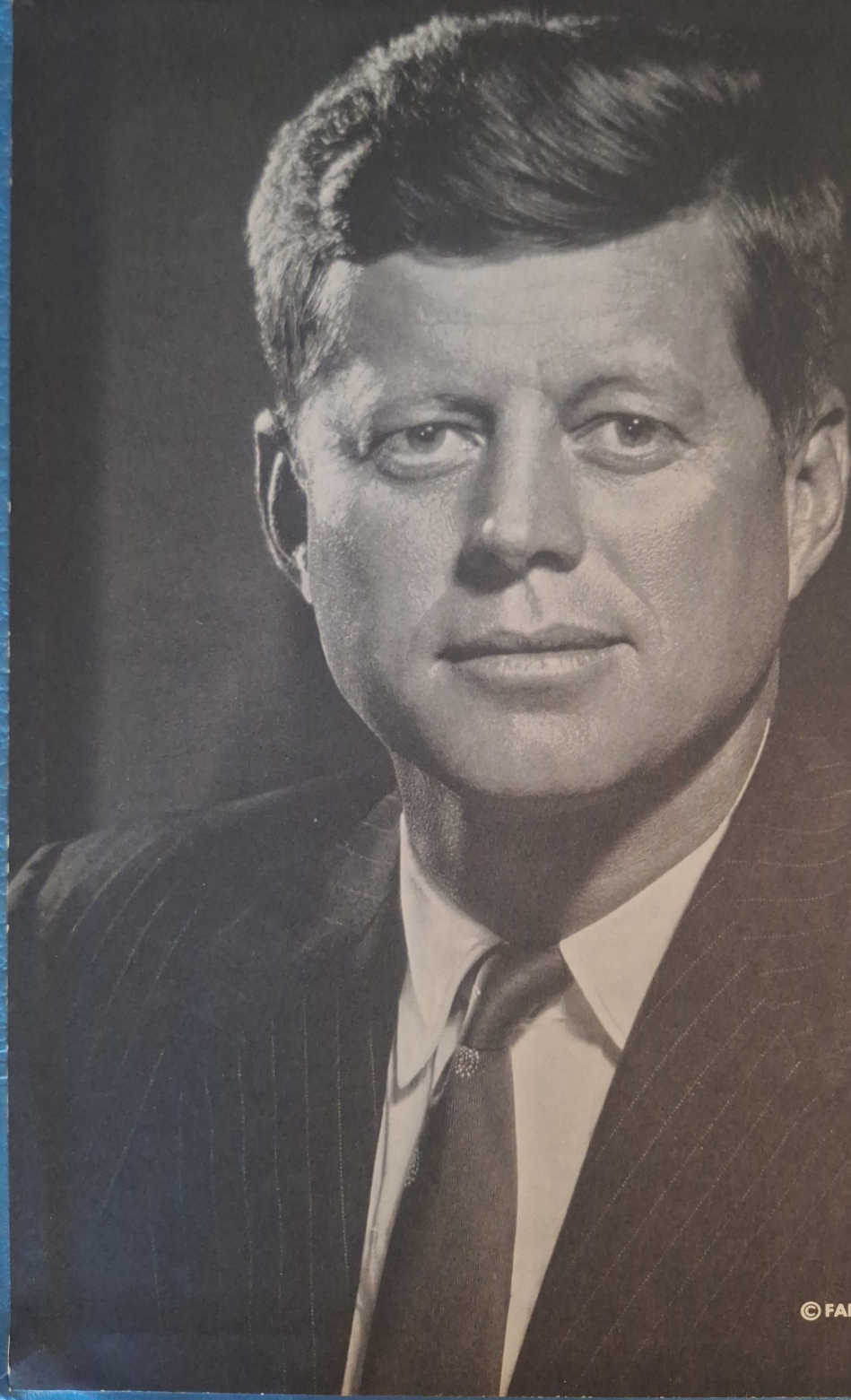


1964



WARRIOR





© FABIAN BACHRACH

What John F. Kennedy left us most of all was an attitude. To put it in the simplest terms, he looked ahead. He knew no more than anyone else what the future was going to be like, but he did know that that was where we ought to be looking. Only to a limited extent are we the prisoners of the past. The future sets us free. It is our escape hatch. We can shape it to our liking, and we had better start thinking about how we would like it.

We are facing the future with trembling steps, and yet with a courage and faith that come from the knowledge that we can make of it what we will. With this in mind, we, the class of 1964, dedicate this book to the memory of John Fitzgerald Kennedy.



# Arapahoe High School



Arapahoe, Nebraska

## *Foreword*

What are memories? They are the essence of the past; the thoughts of days gone by. They are the remembrances of that first football game, the hours of work and fun spent constructing the Homecoming floats, the class plays, the proms, the thrill of seeing the basketball team win a game in the last few seconds. Memories are thoughts of the crowded halls, "crammed-for" tests, slammed locker doors, a well-earned "A," the rush for the lunch line. Memories are those things which we can relive only in our minds.

In the years to come may this book with its many memories help you to relive the year 1963-1964 in Arapahoe High School.

CRAIG MOORE  
Editor

ELLOISE GILES  
Assistant Editor

LARRY TIEDJE  
Business Manager

MARY MERNIN  
Art Editor

## *Contents*

*Administration*

*Faculty*

*Classes*

*Athletics*

*Activities*

*Organizations*

*Advertising*





Education is a bulwark of democracy. In these troubled times, those who do not take advantage of the education that is offered will find themselves greatly handicapped.

I sincerely believe that the students of today will lead our great country forward in its quest for freedom on earth as well as in space.

I wish all of you success in your future endeavors and may this book bring back fond memories in years to come.

Sincerely,  
*Rodney L. Koch*

Rodney Koch  
 Superintendent

## Administration

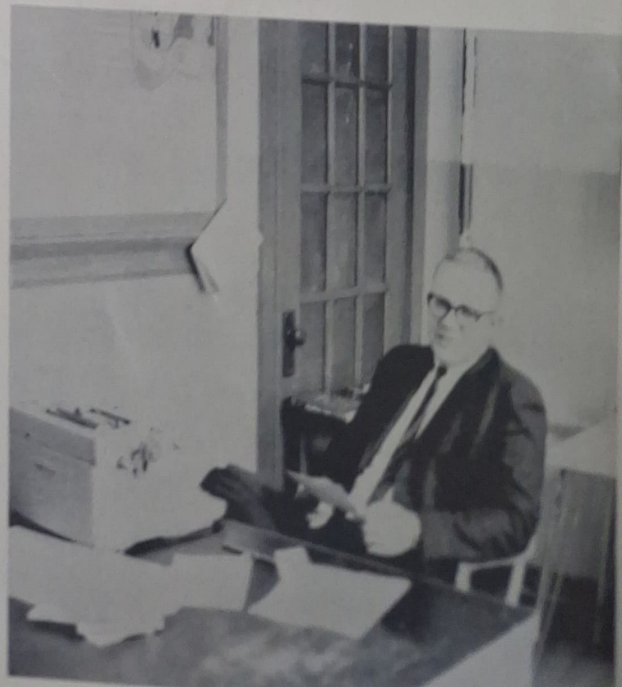
This marks a year in which Arapahoe High School arrived at a series of crossroads in the long journey to a successful school year. At each crossroad, we have made a choice - some for the better, some for the worse, but whatever course we chose, we managed, in the long run, to come out ahead. From weakness, we drew strength. From confusion, we brought about order. From doubt, we forged new confidence.

To the Seniors, may the future bring all the success for which you have worked.

Sincerely,

*Dale D. Poore*

Dale D. Poore  
 Principal



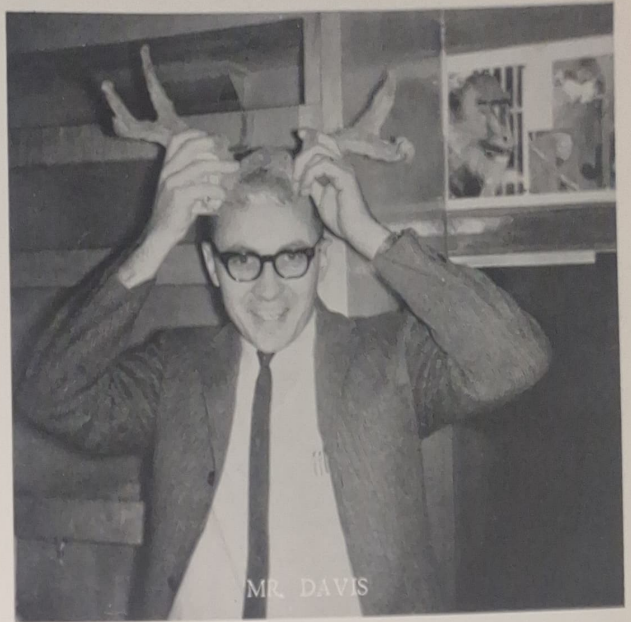


# Faculty



MISS DAVIS

"I smile since I sew on a Singer."



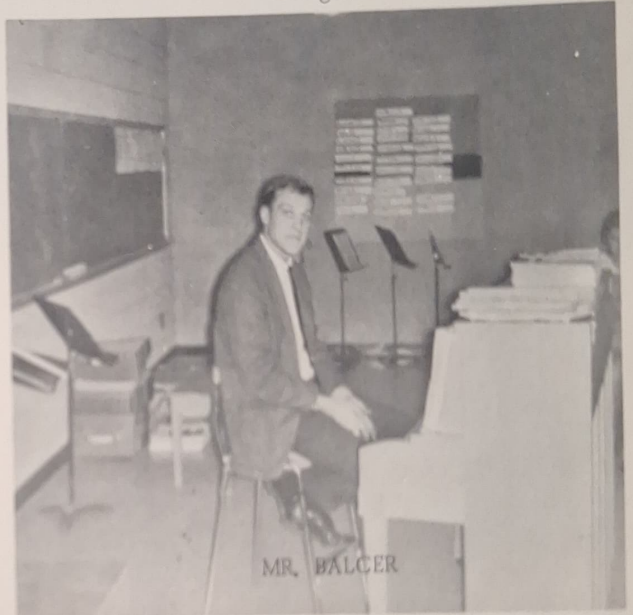
MR. DAVIS

"Charge!"



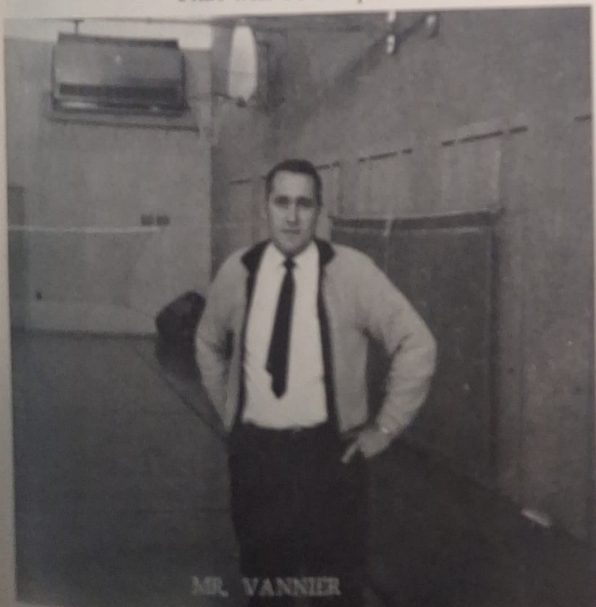
MISS JAMES

"That will be 8th period!"



MR. BALCER

"No, I can't read music!"



MR. VANNIER

"Let's remember that curfew, boys."



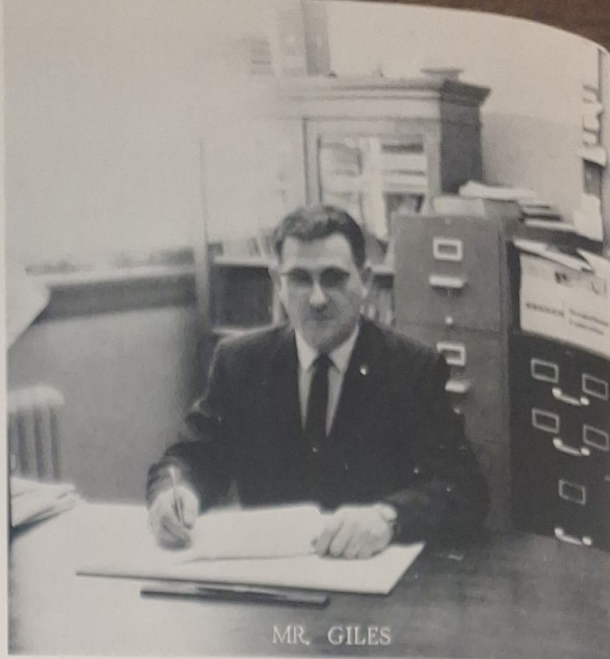
"I also punch lunch tickets!"





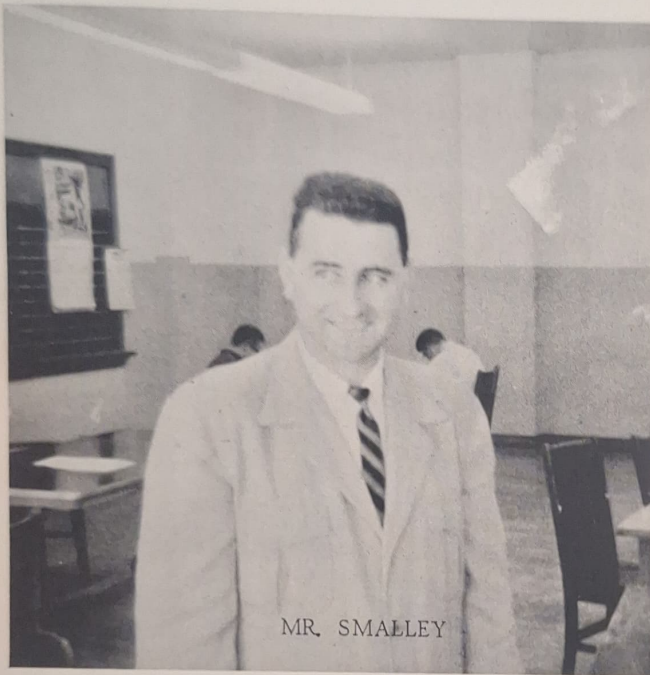
MISS VLASAK

"Miss Deutschland" 1964



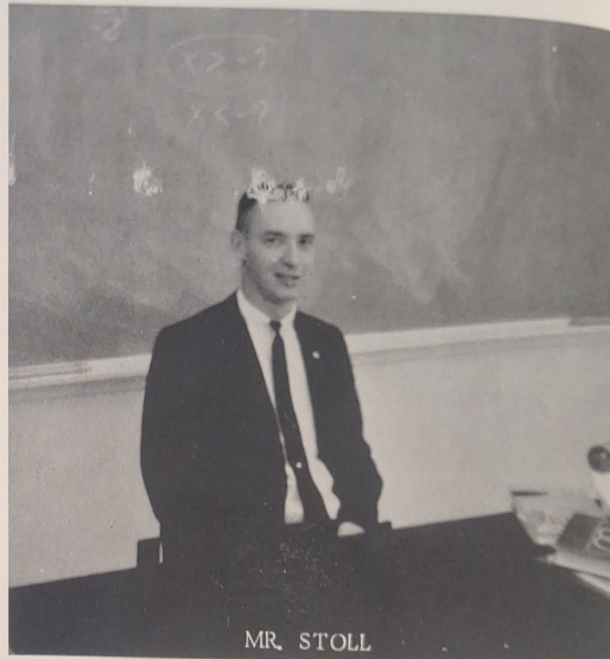
MR. GILES

"You bunch of clowns"



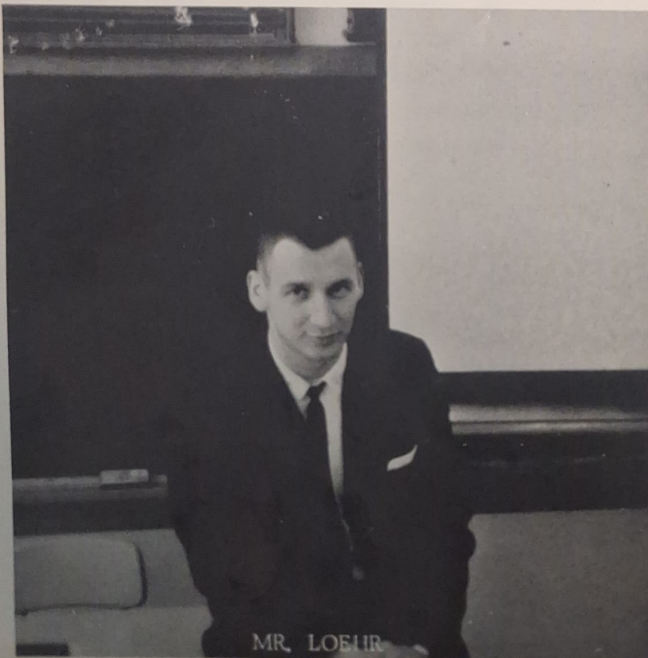
MR. SMALLEY

"They don't call me Smiley for nothing."



MR. STOLL

$X + Y = \text{Uuh.}$



MR. LOEHR

"Four-score and seven years ago--"



MISS DEAL

"No, we don't have comic books!"





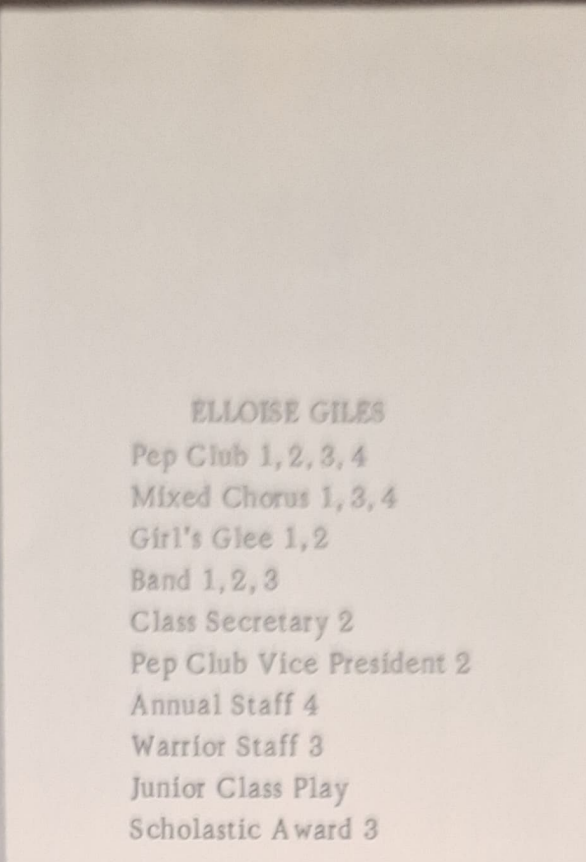
SENIORS





MARY MOCK

Pep Club 1, 2, 3, 4  
 Mixed Chorus 1, 2, 3, 4  
 Girl's Glee 1, 2  
 Band 1, 2, 3, 4  
 Pep Club Officer 4  
 Junior Class Play  
 Pep Club President



ELLOISE GILES

Pep Club 1, 2, 3, 4  
 Mixed Chorus 1, 3, 4  
 Girl's Glee 1, 2  
 Band 1, 2, 3  
 Class Secretary 2  
 Pep Club Vice President 2  
 Annual Staff 4  
 Warrior Staff 3  
 Junior Class Play  
 Scholastic Award 3



JUNE MARTENS

Pep Club 1, 2, 3, 4  
 Girl's Glee 1, 2  
 Band 1, 2  
 Warrior Staff 3  
 Junior Class Play  
 Mixed Chorus 1, 2, 3, 4

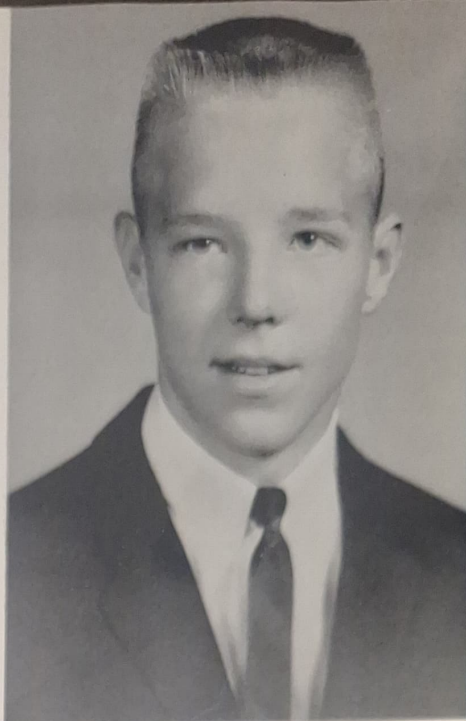






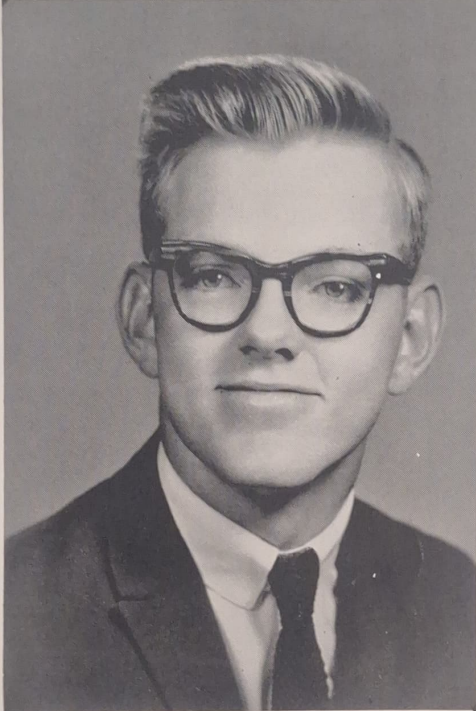
JERRY LEISING

Football 1, 2, 3, 4  
Basketball 1, 2, 3, 4  
Track 2, 3, 4  
FFA 1, 2, 3, 4  
Mixed Chorus 1, 2  
Boy's Glee 1, 2  
Band 1, 2, 3  
FFA Officer 3, 4  
Secretary  
Junior Class Play



CRAIG MOORE

Football 1, 2, 3, 4  
Track 1, 2, 3, 4  
"A" Club 2, 3, 4  
FFA 1, 2  
Mixed Chorus 1, 2, 3, 4  
Boy's Glee 1, 2  
Band 1, 2, 3, 4  
Class Officer  
Vice President 2  
President 3  
Treasurer 4  
"A" Club Officer 3  
Secretary  
FFA Officer 2  
Secretary  
Annual Staff 4 (Editor)  
Junior Class Play  
Scholastic Award 2, 3  
Boy's State 3



JAMES LEISING

Football 1, 2, 3, 4  
Basketball 1, 2  
"A" Club 3, 4  
FFA 1, 2, 3, 4  
Mixed Chorus 1  
Boy's Glee 1, 2  
Band 1, 2, 3  
FFA Officer 3, 4  
Treasurer and President  
Junior Class Play  
Spring Conditioning 1, 2



MARY MERNIN

Pep Club 1, 2, 3, 4; Asst. Cheerleader  
1, 3; Mixed Chorus 1, 3, 4; Girl's  
Glee 1, 2; Band 1, 2, 3, 4; Annual  
Staff (Art Editor); Warrior Staff 3;  
Junior Class Play; Girl's State; Holi-  
day Festival Queen Candidate

THELMA BLAUVELT

Pep Club 1, 2, 3, 4; Cheerleader 3, 4;  
Mixed Chorus 1; Girl's 1, 2; Home-  
coming Queen; Class Officer 4  
(Secretary); Warrior Staff 4; Junior  
Class Play; Student Council 2; Holi-  
day Festival Queen Candidate







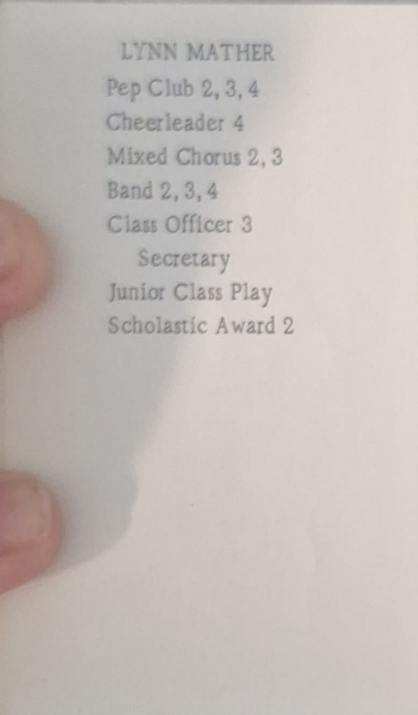
LINDA PACKWOOD

Pep Club 1, 2, 3, 4  
Mixed Chorus 1, 2, 3, 4  
Girl's Glee 1, 2  
Class Officer 4  
News Reporter  
Pep Club Officer 4  
News Reporter  
Warrior Staff 3  
Librarian 3



JEAN RUSSELL

Pep Club 1, 2, 3, 4  
Mixed Chorus 1, 2  
Junior Class Play  
Scholastic Award 3



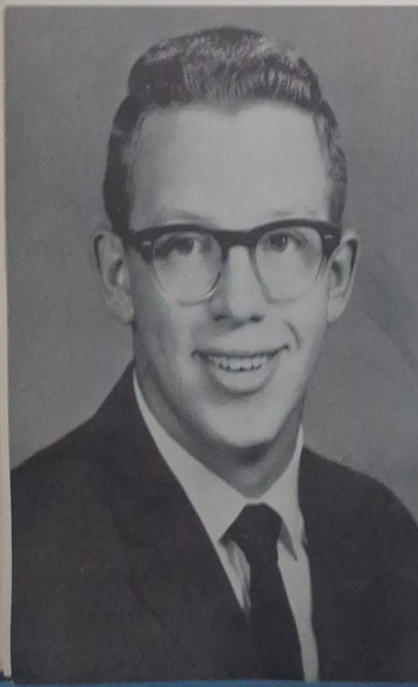
LYNN MATHER

Pep Club 2, 3, 4  
Cheerleader 4  
Mixed Chorus 2, 3  
Band 2, 3, 4  
Class Officer 3  
Secretary  
Junior Class Play  
Scholastic Award 2



DALE LEWIS

Football 1, 2, 3, 4  
Basketball 1, 2, 3, 4  
Track 1  
FFA 1  
Mixed Chorus 1, 3  
Boy's Glee 1, 2  
Junior Class Play  
Scholastic Award 2  
Annual Staff 4

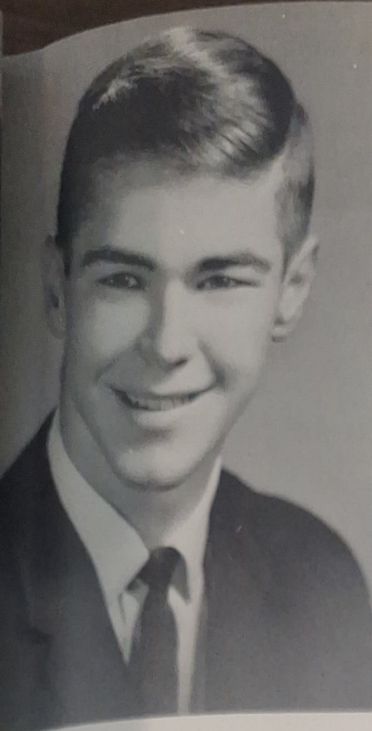


ROBERT TRIDLE

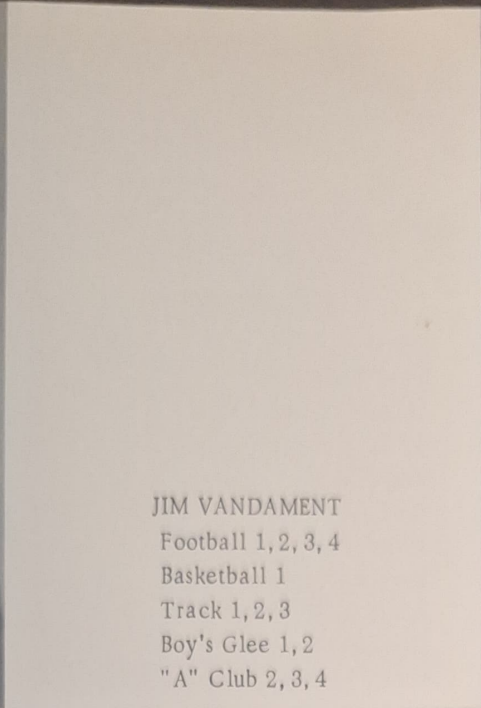
Football 1  
"A" Club 1, 2, 3, 4  
FFA 1, 2  
Mixed Chorus 1, 2, 3, 4  
Boy's Glee 1, 2  
Band 1, 2, 3, 4  
Junior Class Play



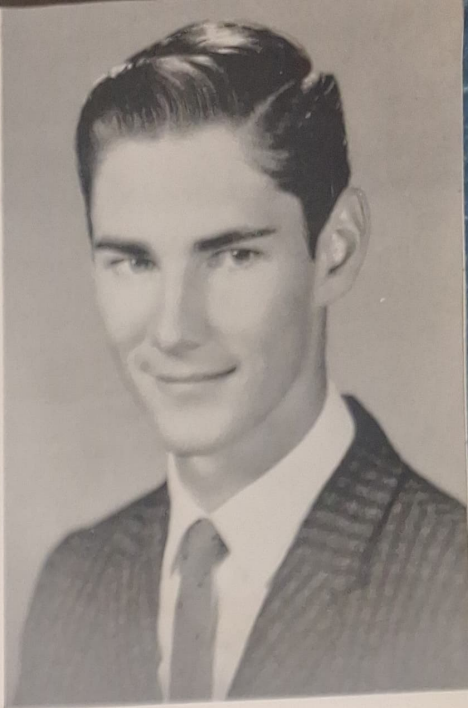




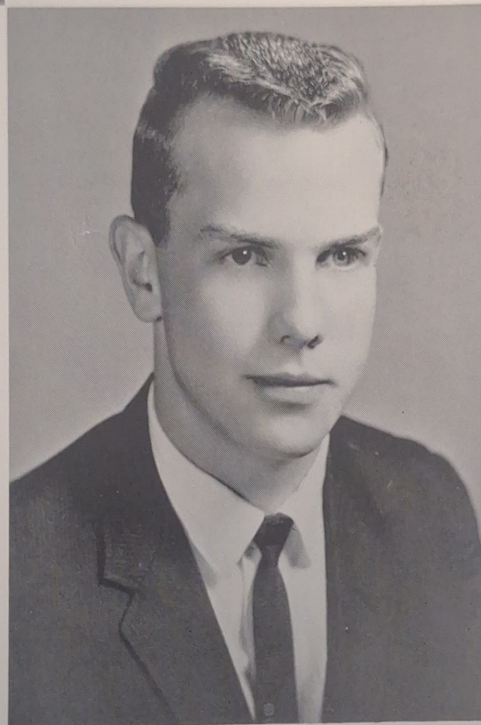
LARRY TIEDJE  
 Football 1, 2, 3, 4  
 Basketball 1, 2, 3, 4  
 Track 1, 2  
 "A" Club 1, 2, 3, 4  
 "A" Club Officer  
 Vice President 3  
 President 4  
 FFA 1  
 Mixed Chorus 1, 2, 3, 4  
 Boy's Glee 1, 2  
 Homecoming Attendant  
 Band 1, 2, 3, 4  
 Class President 2, 4  
 Junior Class Play  
 Student Council 3



JIM VANDAMENT  
 Football 1, 2, 3, 4  
 Basketball 1  
 Track 1, 2, 3  
 Boy's Glee 1, 2  
 "A" Club 2, 3, 4



DICK DAWSON  
 Football 1, 2, 3, 4  
 Basketball 1  
 "A" Club 2, 3, 4  
 FFA 1, 2  
 Boy's Glee 1  
 Homecoming Attendant  
 Class Officer  
 President 1  
 Vice President 3  
 FFA Treasurer 2  
 Junior Class Play  
 Student Council 4



CHERYL HILKER  
 Pep Club 1, 2, 3, 4  
 Cheerleader 4  
 Mixed Chorus 2, 3  
 Girl's Glee 1  
 Warrior Staff 3  
 Librarian



CHERYL HERMES  
 Pep Club 1, 2, 3, 4  
 Cheerleader 1  
 Mixed Chorus 1, 3, 4  
 Girl's Glee 1, 2  
 Homecoming Attendant  
 Class Officer  
 Secretary 1; Treasurer 3  
 Scholastic Award 2, 3  
 Holiday Festival Queen Candidate





JUDY HOFFMAN

Pep Club 1, 2, 3, 4  
 Cheerleader 2, 4  
 Mixed Chorus 1, 2, 3, 4  
 Girl's Glee 1, 2  
 Homecoming Attendant  
 Band 1, 2, 3, 4  
 Majorette 3, 4  
 Warrior Staff 3  
 Junior Class Play  
 Student Council 4  
 Holiday Festival Queen Candidate



K'ALICE BREINIG

Pep Club 1, 2, 3, 4  
 Mixed Chorus 1, 2, 3  
 Girl's Glee 1, 2  
 Junior Class Play  
 Scholastic Award 2, 3  
 Librarian 3, 4

MARILYN FRITZ

Pep Club 1, 2, 3, 4  
 Mixed Chorus 1, 2  
 Girl's Glee 1, 2  
 Band 1  
 Class Officer  
 News Reporter 2  
 Junior Class Play  
 Girl's State Alternate  
 Student Council 1

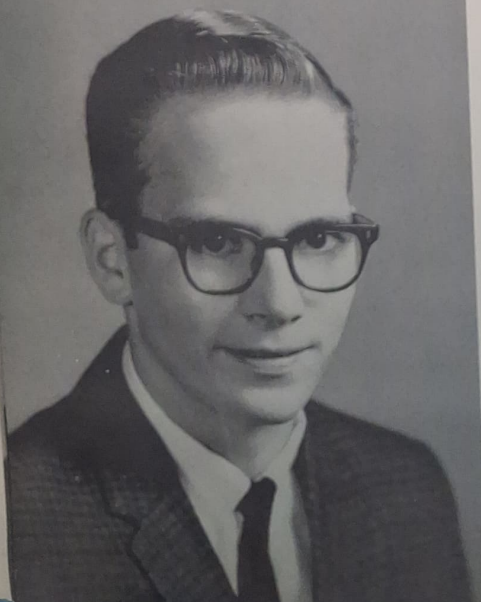


JERRY HORTON

Football 1, 2, 4  
 Track 1, 2, 3  
 "A" Club 4  
 FFA 4  
 Mixed Chorus 1  
 Boy's Glee 1, 2

DONALD DUNLAP

Football 1, 2, 3, 4  
 Basketball 1, 2, 3, 4  
 Track 2, 3, 4  
 FFA 1, 2, 3, 4  
 Boy's Glee 1, 2  
 FFA Officer  
 Reporter 3; Treasurer 4  
 Junior Class Play  
 "A" Club 3, 4







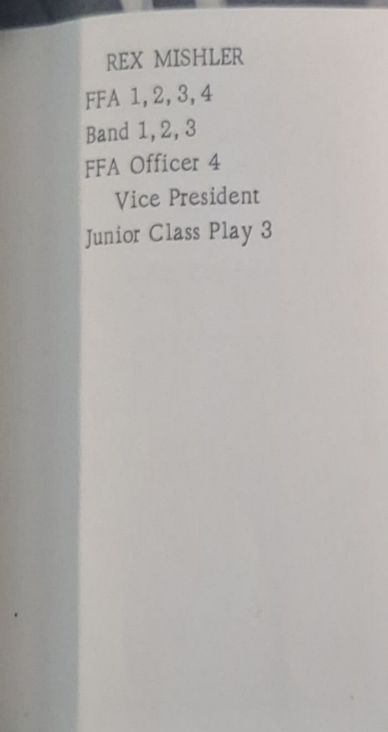
RAYMOND LEISING

Football 1, 2, 3, 4  
"A" Club 4  
FFA 1, 2, 3, 4  
Mixed Chorus 1, 2  
Boy's Glee 1, 2  
Band 1, 2, 3  
FFA Officer 4  
News Reporter  
Junior Class Play



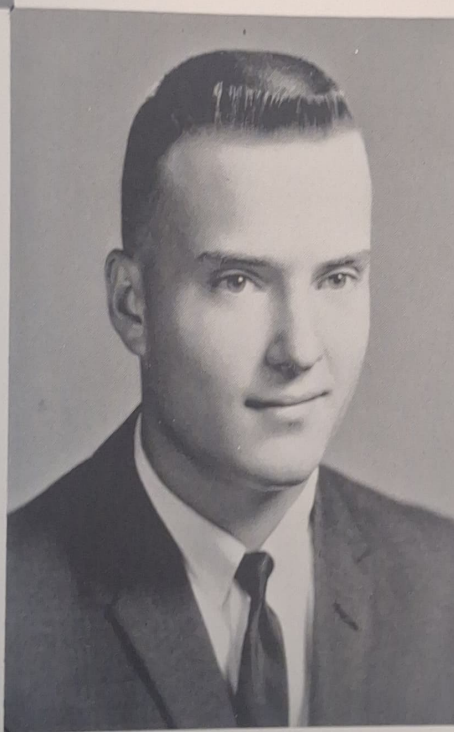
DENNIS GARDNER

Football 1, 2  
"A" Club 1, 2, 3, 4  
FFA 1, 2, 3, 4  
FFA Officer 3, 4  
Class Officer 1  
Vice President  
Junior Class Play



REX MISHLER

FFA 1, 2, 3, 4  
Band 1, 2, 3  
FFA Officer 4  
Vice President  
Junior Class Play 3



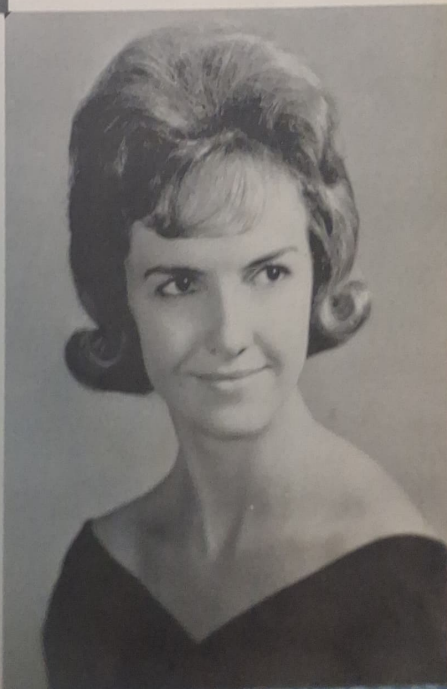
SHARON HESS

Pep Club 1, 2, 3, 4  
Mixed Chorus 1, 3, 4  
Girl's Glee 1, 2  
Class Officer 1  
Treasurer  
Warrior Staff 3  
Junior Class Play



PAT LONN

Pep Club 1, 2, 3, 4  
Mixed Chorus 1, 2, 3, 4  
Girl's Glee 1  
Band 1  
Pep Club Officer 3  
News Reporter  
Junior Class Play





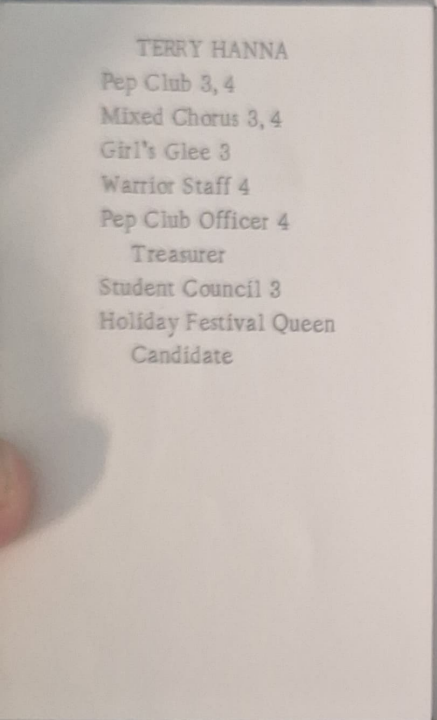
LINDA EMS

Pep Club 1, 2, 3, 4  
Mixed Chorus 1, 2, 4  
Girl's Glee 1  
Class Officer 4  
Vice President  
Band 1, 2  
Warrior Staff 3  
Holiday Festival Queen Candidate



SANDRA WAGNER

Pep Club 1, 2, 3, 4  
Mixed Chorus 1, 2, 3, 4  
Class Officer 1  
Treasurer  
Girl's Glee 1, 2  
Warrior Staff 3



TERRY HANNA

Pep Club 3, 4  
Mixed Chorus 3, 4  
Girl's Glee 3  
Warrior Staff 4  
Pep Club Officer 4  
Treasurer  
Student Council 3  
Holiday Festival Queen  
Candidate

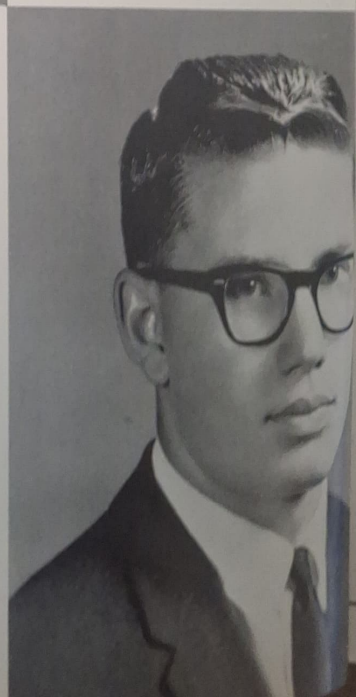


WILLIAM BREINIG

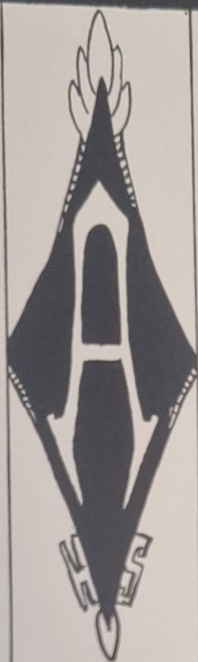
Class Officer 1  
News Reporter  
Mixed Chorus 4  
Boy's Glee 1  
Junior Class Play

JUNIOR STAGEMEYER

Football 1, 2, 3  
Basketball 2, 3, 4  
"A" Club 3, 4  
Boy's Glee 1  
Junior Class Play

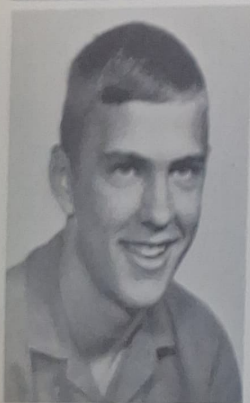






JUNIORS

# *Junior Class Officers*



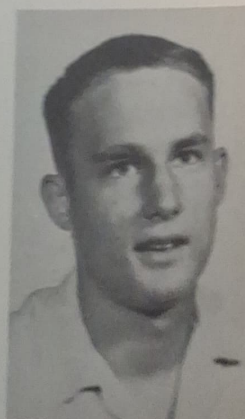
DENNIS WILKEN  
Secretary-Treasurer



TERRY DRAPER  
Vice President



TOBY YOUNG  
News Reporter



WAYNE LAMMEL

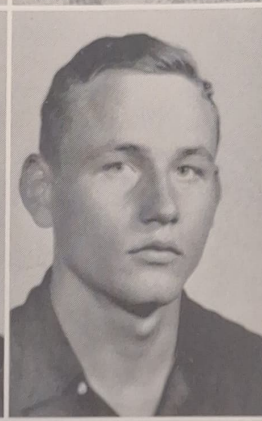




Robert Williams  
Mary Dahms  
Terry Draper  
Antoinette  
Debban



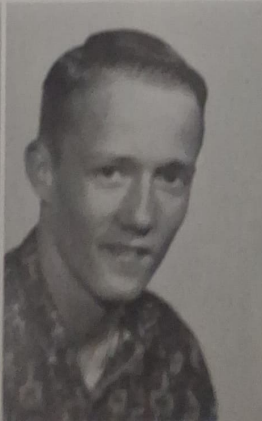
Kenny Elder  
Linda Esslinger  
Carolyn Mattox  
Valerie Koller



Cathy Busch  
Mike Cacy  
Judy Lockenour  
Leslie  
Scheivelbein



Bonnie Carter  
June Weber  
Sam Schutte  
Linda Schmid



Susie Missing  
Ron Morse  
Janet Wendland  
Bob Vaughn



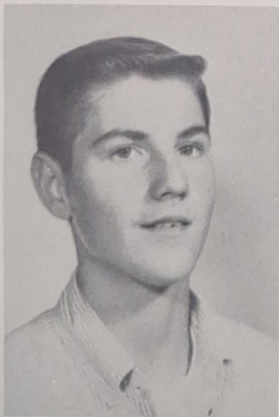
SOPHOMORES



# *Sophomore Class Officers*



CHARLOTTE DUNLAP  
Treasurer



WES MUES  
Secretary



JUDY VOSS  
President



TERRY GARDNER  
Vice President



BARB SCHROEDER  
News Reporter





Kay Anderson  
Doug Strickland  
Carolyn Toomey  
Rodney Hilker



Susan Wolfe  
Linda Martens  
Steve Mues  
Erma Utterback



Neal Gehring  
Linda Ator  
Bill Wendland  
Judith Monter

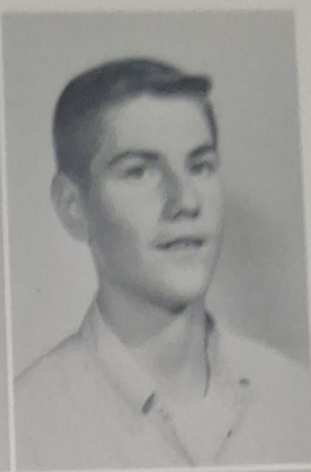
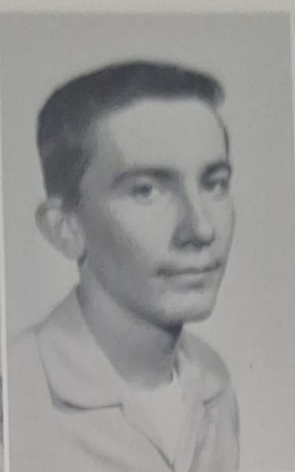


Judy Willey  
Roger Ziebell  
Jeanette Debban  
Quinton Huxoll



Daryl Cable  
Marilyn Packwood  
Mike Haussler  
Sheila Monie





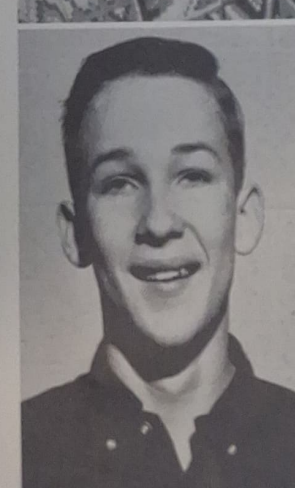
Marcus Petermann  
Barbara Schaefer  
Kenneth Breinig  
Wes Mues



Linda Cankaden  
Paul Larson  
Judy Voss  
Ronnie Ems



Terry Gardner  
Larry Whitbeck  
Mary Hurdle  
Charles Meyer



Alan Schieve  
Linda Helm  
Robert Sexton  
Dennis Keen



FRESHMEN



# *Freshman Class Officers*



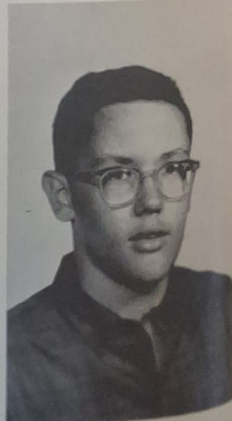
JIM MATHER  
President



STEVEN LIFE  
Vice President

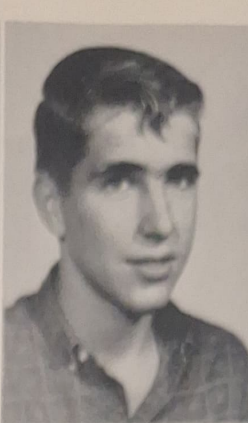


DEANNA ESSLINGER  
Secretary

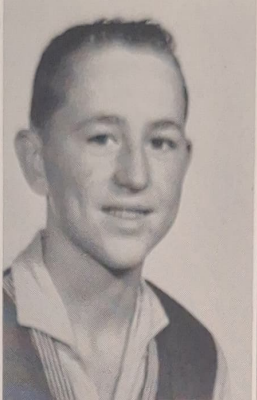


SCOTT EMMETT  
News Reporter

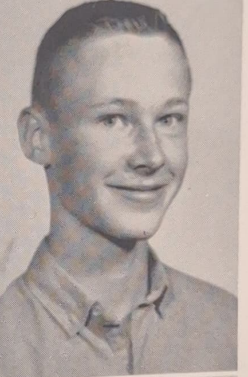




Leon Meyers  
Betty Missing  
Rebecca Mohrman  
Lynn Huxoll



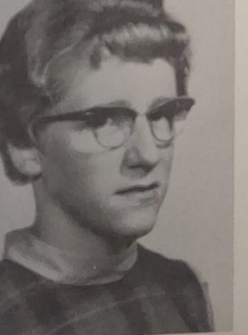
Julie Monter  
Brenda Morris  
Mike Gates  
Karen  
Scheivelbein



Richard Dickmeyer  
Margie Smith  
Vickie Steel  
Jim Stillman

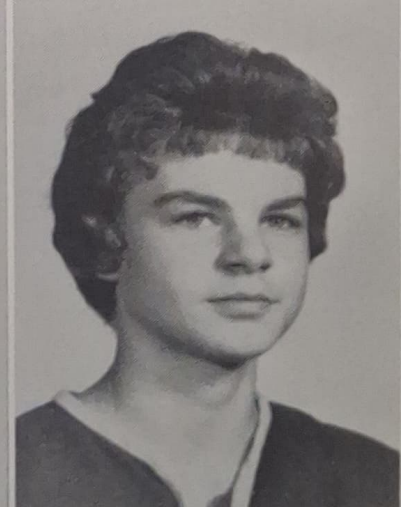
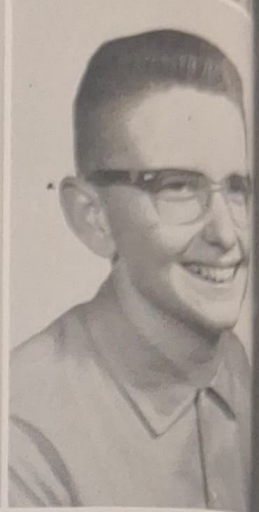
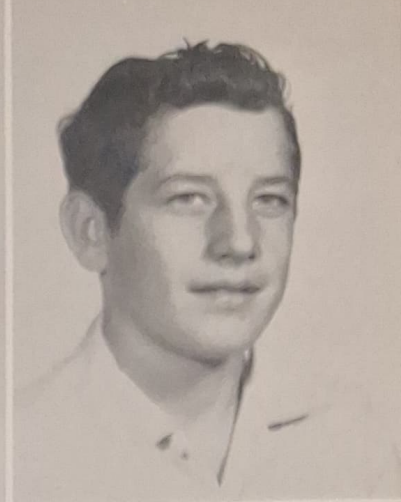


Ruby ten Bense  
Marlen Petermann  
Elizabeth Upward  
Dwana Urbom



Lana Vandament  
Linda Vandament  
George Cornwell  
Carol Weber









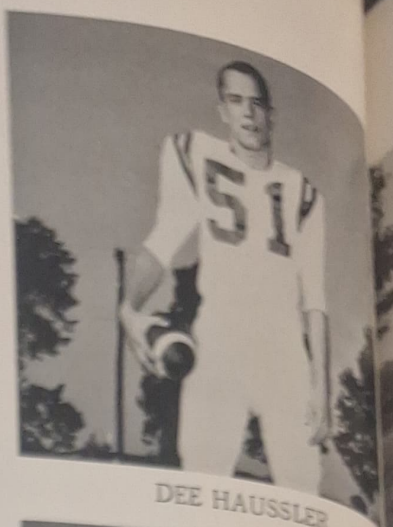
# Football Seniors



DICK DAWSON



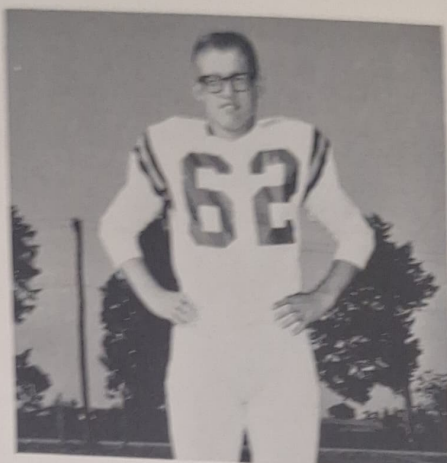
LARRY TIEDJE



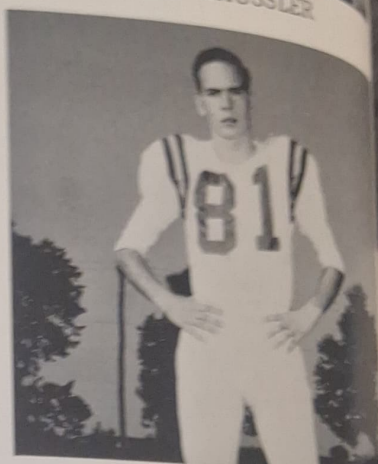
DEE HAUSSLER



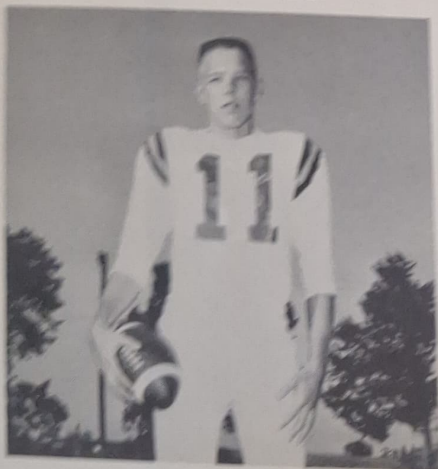
ROGER HURDLE



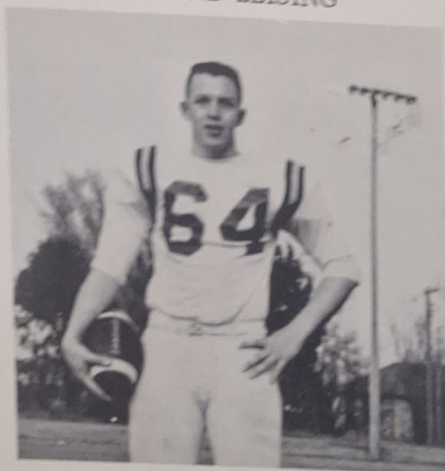
RAYMOND LEISING



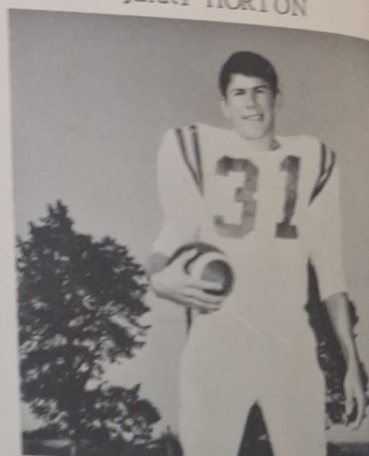
JERRY HORTON



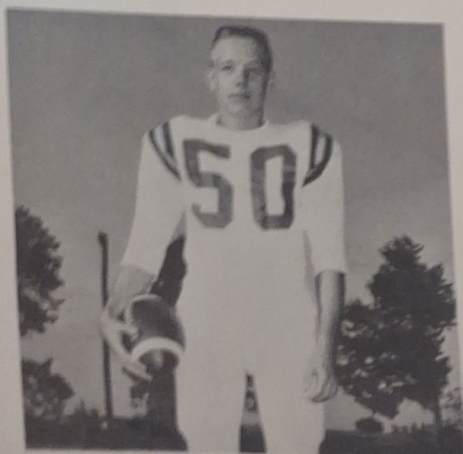
JERRY LEISING



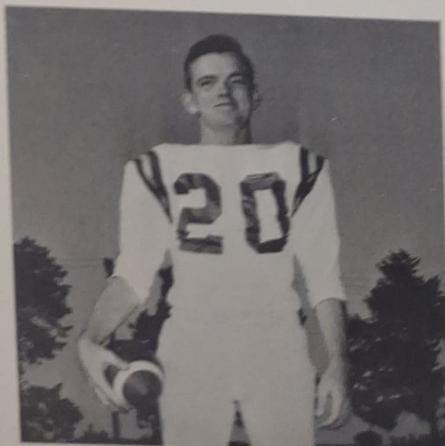
DALE LEWIS



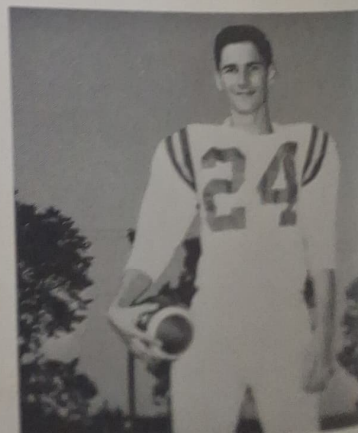
DON DUNLAP



JIM LEISING



CRAIG MOORE



JIM VANDAMENT



# Football Squad



BACKFIELD: Jim Vandament, Ron Morse, Larry Tiedje, Toby Young. LINE: Dee Haussler, Terry Draper, Dale Lewis, Wayne Lammel, Dick Dawson, Roger Hurdle, Robert Williams, Mike Haussler.



Left to Right, TOP ROW: Craig Moore, Dick Dawson, Don Dunlap, Jerry Leising, Larry Tiedje, Dee Haussler, Jerry Horton, Jim Leising, Dale Lewis, Jim Vandament, Roger Hurdle, Raymond Leising. SECOND ROW: Coach Bill Loehr, Sam Schutte, Bob Williams, Dennis Wilken, Gary Schievelbein, Terry Draper, Ron Morse, Toby Young, Wayne Lammel, Bob Vaughn, Coach Glen Vannier. THIRD ROW: Steve Life, Doug Dahms, Bill Wendland, Neal Gehring, Quinton Huxoll, Mike Haussler, Wes Mues, Terry Gardner, Steve Mues, Doug Strickland. BOTTOM ROW: Jerry Carbaugh, John Helms, Richard Pitts, Scott Emmett, George Cornwell, Mike Gates, Mike Hill.



# Warrior Wins

## FOOTBALL

Warriors			Warriors		
46	Oxford	7	14	Alma	6
33	Trenton	14	40	Beaver City	7
20	Bertrand	13	19	Cambridge	13

14 St. Ann's 14

## BASKETBALL

Warriors			Warriors		
41	Oxford	39	87	Elwood	61
67	St. Ann's	35	63	Bertrand	46
72	Eustis	50	69	Axtell	63
51	Bertrand	46	93	Beaver City	52
75	Elwood	63	81	Cambridge	66
70	Franklin	68	66	Bartley	62
73	Oxford	48	60	Loomis	58
57	Bertrand	46	72	Oxford	41
65	Beaver City	52	60	Cambridge	43

## WARRIOR LOSSES

Football			Basketball		
Warriors			Warriors		
6	Elwood	7	51	Curtis	53
7	Franklin	19	66	Alma	76
			48	Maywood	71
			55	Bartley	69
			60	Alma	69

## SEASON RECORDS

Football

6 wins - 2 losses - 1 tie

Basketball

18 wins - 5 losses

# Basketball Varsity



Left to Right, STANDING: Bob Williams, Dale Lewis, Mike Haussler, Larry Tiedje, Terry Draper, Kenny Elder, Dee Haussler, Ron Morse, Junior Stagemeyer, Jerry Leising, Bob Vaughn. KNEELING: Asst. Coach Bill Loehr, Head Coach Glen Vannier, Doug Strickland (Student Manager).

# Basketball Squad

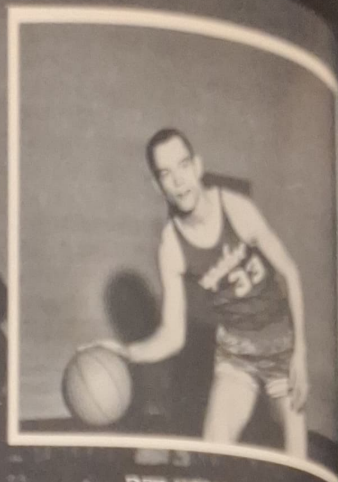


Left to Right, BACK ROW: Coach Loehr, Bob Williams, Dale Lewis, Mike Haussler, Larry Tiedje, Terry Draper, Kenny Elder, Dee Haussler, Ron Morse, Junior Stagemeyer, Jerry Leising, Bob Vaughn, Coach Vannier. FRONT ROW: Doug Strickland, Mike Hill, John Helms, Robert Sextro, Lynn Huxoll, Scott Emmett, Dennis Wilken, Toby Young, Steve Life, Jim Mather, Doug Dahms.

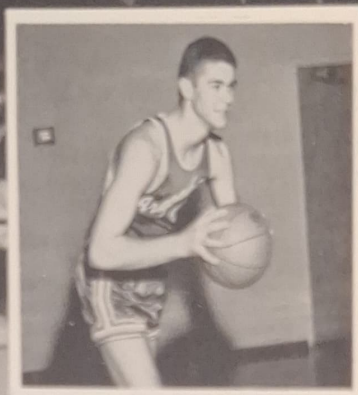


# Basketball

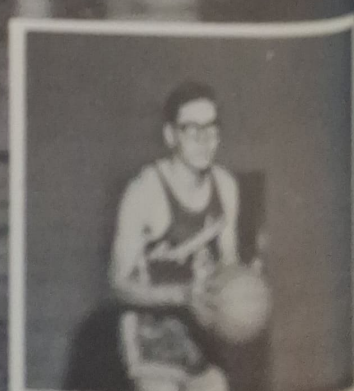
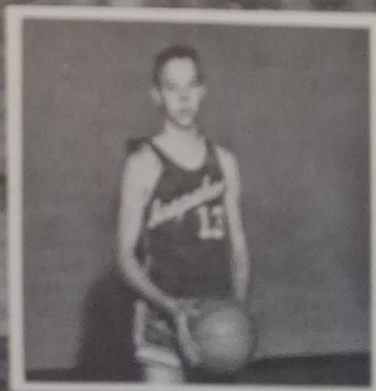
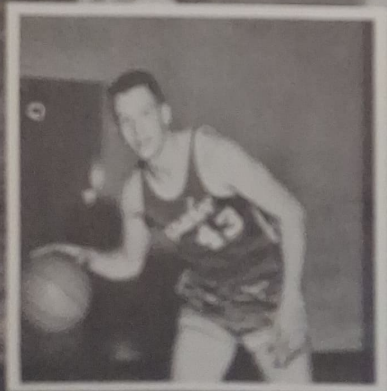
## Seniors



DEE HAUSSLER



LARRY TIEDIE





# Warrior Track Team



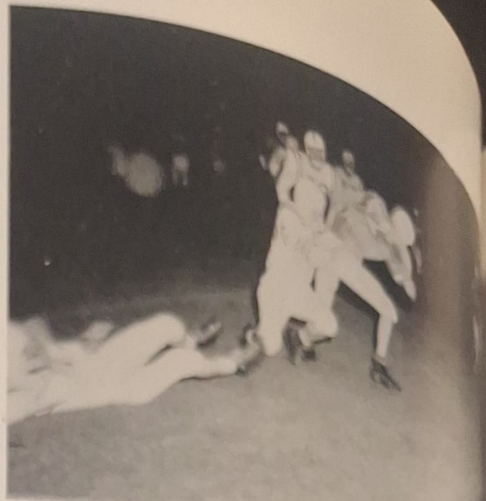
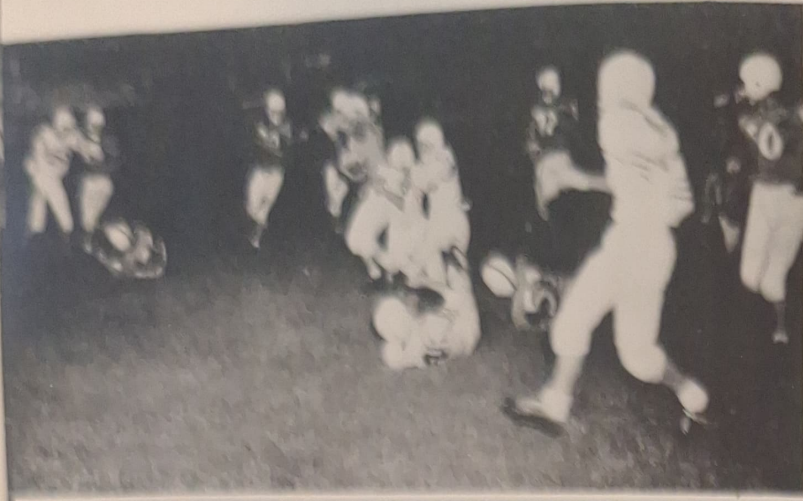
BACK ROW, Left to Right: Craig Moore, Don Dunlap, Larry Tiedje, Dee Haussler, Ron Morse, Toby Young.  
MIDDLE ROW: Coach Loehr, Neal Gehring, Jim Leising, Wayne Lammel, Jerry Leising, Gary Schievelbein, Bob Vaughn, Coach Vannier. FRONT ROW: Student Manager Doug Strickland, Jim Mather, Steve Mues, Scott Emmett, Lynn Huxoll, Steve Life, Mike Hill.

## Track Schedule for 1964

Arapahoe Invitational- - - - -	April	2
Mid-Valley at Arapahoe- - - - -	April	8
Beaver City Invitational- - - - -	April	16
Kearney Invitational- - - - -	April	25
R. V. L. at Arapahoe- - - - -	April	30
District Meet at McCook- - - - -	May	7
State Meet at Lincoln - - - - -	May 15-16	



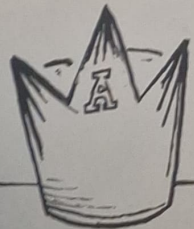
# Warriors







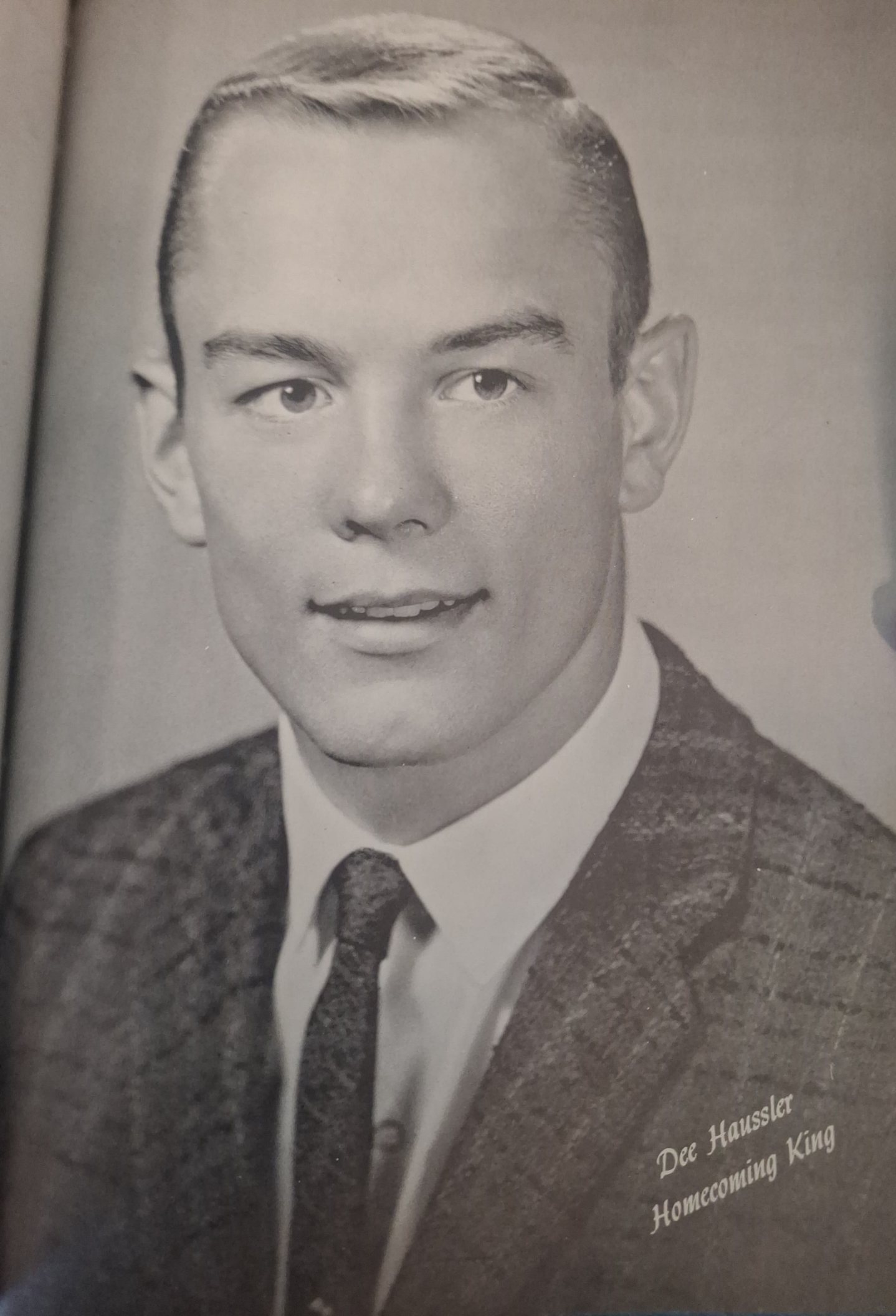
# ACTIVITIES







*Thelma Blauvelt  
Homecoming Queen*



Dee Haussler  
Homecoming King



# Homecoming Activities



The Senior class added to the color of Homecoming with one of the best floats in many years.



## HOMECOMING ROYALTY

Left to Right: Second Attendants: Dick Dawson, Judy Hoffman; Queen: Thelma Blauvelt; King: Dee Haussler; First Attendants: Cheryl Hermes, Larry Tiedje.

The Sophomore float showed originality while winning first place.

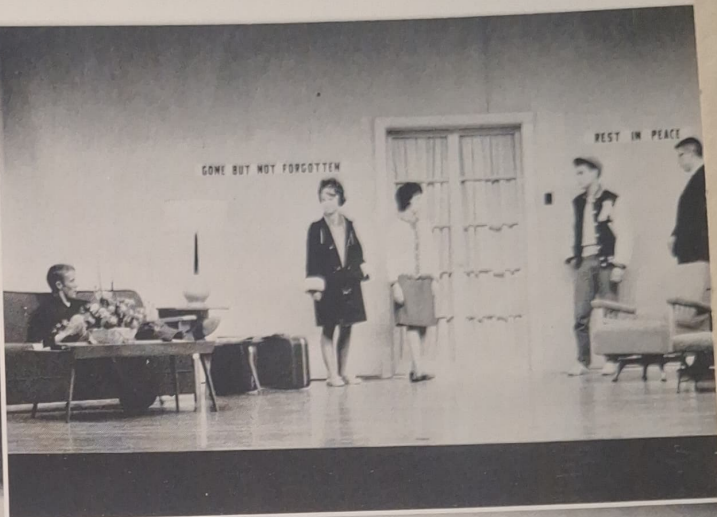




Junior



Thespians





*Our Town*  
*Presented by the Senior Class*

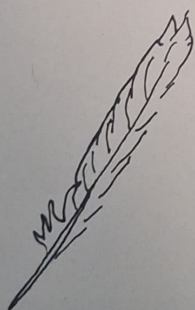


SENIOR PLAY CAST



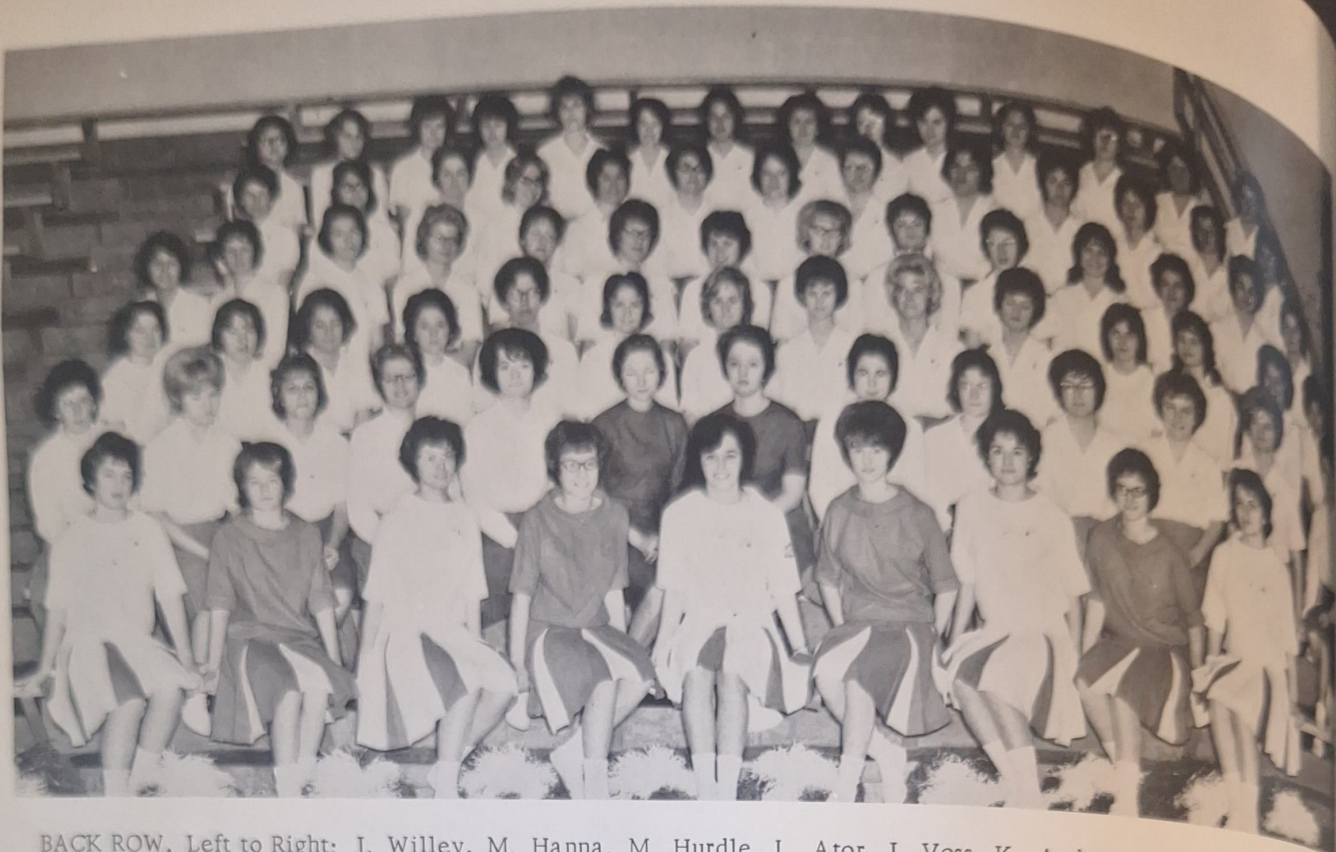
*At the End of This Road Lies . . .*  
*Our Town*

מגן דוד - המגן המצוי על חזהו של הכהן הגדול





# Pep Club



BACK ROW, Left to Right: J. Willey, M. Hanna, M. Hurdle, L. Ator, J. Voss, K. Anderson, S. Wolf, L. Martens, L. Helms, A. Debban, E. Upward, S. Longsine, B. Morse, C. Weber. FIFTH ROW: O. McCellum, S. Missing, J. Lockenour, B. Carter, L. Schmid, J. Wendland, V. Koller, C. Mattox, M. Dahms, J. Monter, N. Leising, R. Bensel, D. Esslinger. FOURTH ROW: C. Toomey, E. Utterback, J. Russell, S. Wagner, J. Weber, L. Esslinger, L. Toomey, S. Gates, R. Stagemeyer, S. Smith, L. Vandament, M. Smith, S. Haussler, J. Collins. THIRD ROW: R. Mohrman, K. Schievelbein, S. Toomey, V. Steele, K. Breinig, P. Lonn, M. Fritz, E. Giles, C. Hermes, S. Henz, B. Missing, L. Vandament, R. Walker, C. Busch. SECOND ROW: M. Mock, M. Packwood, L. Hanna, T. Hanna, L. Packwood, Miss Vlasak, Miss Davis, S. Monie, V. Gardner, C. Dunlap, J. Monter, L. Ems, M. Merninx. FIRST ROW: L. Mather, D. Urbom, C. Busch, B. Schroder, J. Hoffman, J. Debban, C. Hilker, L. Carskadon, T. Blauvelt.

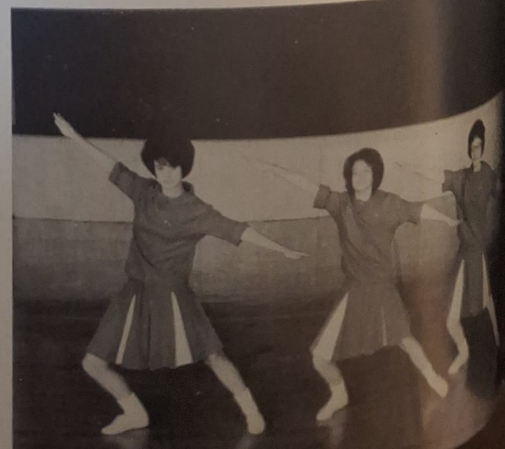
## Varsity

### Cheerleaders



## Jr. Varsity

### Cheerleaders





## A-Club



Left to Right, TOP ROW: Jerry Leising, Jerry Horton, Bob Tridle, Kenny Elder, Larry Tiedje, Toby Young, Gary Schievelbein, Craig Moore, Roger Hurdle. MIDDLE ROW: Coach Bill Loehr, Bob Williams, Dale Lewis, James Utterback, Dee Haussler, Mike Haussler, Don Dunlap, Dick Dawson, Wayne Lammel, Sam Schutte, Coach Glen Vannier. BOTTOM ROW: Jim Vandament, Wes Mues, Jim Leising, Ron Morse, Neil Gehring, Bob Vaughn, Steve Mues, Raymond Leising, Doug Strickland.

## Student Council



Left to Right, BACK ROW: Lynn Huxoll, Quinton Huxoll, Marilyn Packwood, Connie Busch. FRONT ROW: Gary Schievelbein, Dick Dawson, Judy Hoffman (President), Mr. Poore (Advisor), Bonnie Carter.



# A.H.S. Musicians



Left to Right, BACK ROW: Mr. Balcer, Linda Ator, Jeanette Debban, Barbara Schroeder, Judy Voss, Mike Gates, Larry Hoefs. THIRD ROW: Larry Tiedje, Scott Haussler, John Helms, Gary Helms, Ronnie Hines, Rube Ahrens, Judeth Monter, Mike Wilken, Scott Emmett, Scott Carpenter, Jim Stillmann, Bob Tridle. SECOND ROW: Linda Carskaden, Deanna Wolzen, Elizabeth Upward, Ruby tenBensel, Judy Steele, Kathryn Larson, Mike Hoefs, Toni Debban, Sherry Longsine, Monte Warner, Marilyn Packwood, Craig Moore. FRONT ROW: Mary Mock, Mary Mernin, Jodene McCoy, Jeanie Mues, Carolyn Toomey, Lorraine Toomey, Lynn Mather.



Left to Right, BACK ROW: George Cornwell, Jim Stillmann, Scott Emmett, Richard Pitts, John Helms, Steve Life, Larry Tiedje, James Utterback, Bob Tridle, Craig Moore, Lynn Huxoll, Jim Mather, Jerry Carbaugh, Mike Hill, Doug Dahms. FOURTH ROW: Julia Monter, Judy Willey, Linda Ator, Roy Esslinger, Terry Anderson, Marlan Petermann, Richard Dickmeyer, Jill Collins, Sherry Haussler, Elizabeth Upward, Patricia York. THIRD ROW: Romona Walker, Owena McCullom, Nancy Leising, Karen Schievelbein, Margie Smith, Betty Missing, Linda Vandament, Lana Vandament, Dwana Urbom, Carol Weber, Sherry Longsine, Rebecca Mohrman, Marcia Hanna, Connie Busch, Mr. Balcer. SECOND ROW: Linda Carskaden, Pat Lonn, Linda Ems, Sharon Hess, Elloise Giles, Mary Mernin, Vickie Gardner, Teresa Hanna, Sandra Wagner, Sharon Toomey, Deanna Esslinger, Brenda Morris. FRONT ROW: Linda Packwood, Barbara Schroeder, Mary Mock, Marilyn Packwood, Sheila Monie, Ruby tenBensel, Vickie Steele, Judy Voss.



# F.F.A.



Left to Right, TOP ROW: Jack Collins, Kenneth Breinig, Gary Schievelbein, Jerry Warner, Jerry Horton, Leslie Schievelbein, Paul Larson, Bill Breinig, Dennis Gardner. CENTER ROW: Kenneth Kenning, Raymond Leising, Jim Leising, Jerry Leising, Charles Meyers, Rex Mishler, James Utterback, Don Dunlap, Dennis Kenning, Daryl Cable, Instructor Mr. Keith Smalley. BOTTOM ROW: Terry Anderson, Roy Esslinger, Marlin Petermann, Jim Stillman, Leon Meyers, Larry Whitbeck, Mike Hill, Dick Dickmeyer, Marcus Petermann.

## F.F.A. Officers



Left to Right: Advisor Mr. Keith Smalley, Dennis Gardner, Jerry Leising, Jim Leising, Rex Mishler, Raymond Leising, Donald Dunlap, Gary Schievelbein.



## *Annual Staff*



LEFT TO RIGHT: Mary Mernin, Craig Moore, Elloise Giles, and Larry Tiedje.

## *Warrior Staff*



LEFT TO RIGHT: Miss Vlasak, Carolyn Nattox, Valerie Koller, Shirley Gates, Bonnie Carter, Lynn Hanna, Linda Schmid, Carolyn Toomey, Linda Esslinger, June Weber, Susan Smith, Antoinette Debban, Terry Hanna, and Thelma Blauvelt.



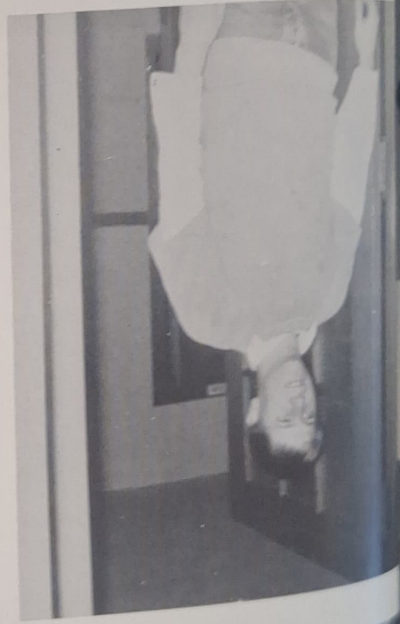
# Campus Candids



The Gelaway.



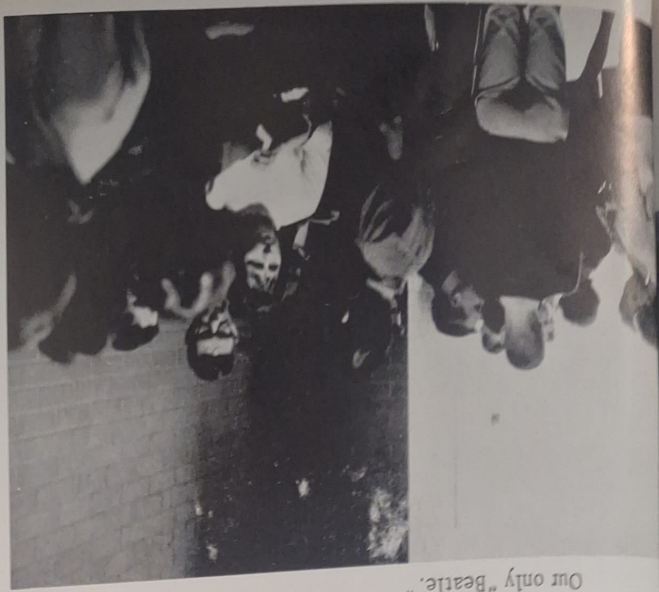
"Roy, can't you read?"



Homecoming Captains



"I never could play poker."



Our only "Beale."



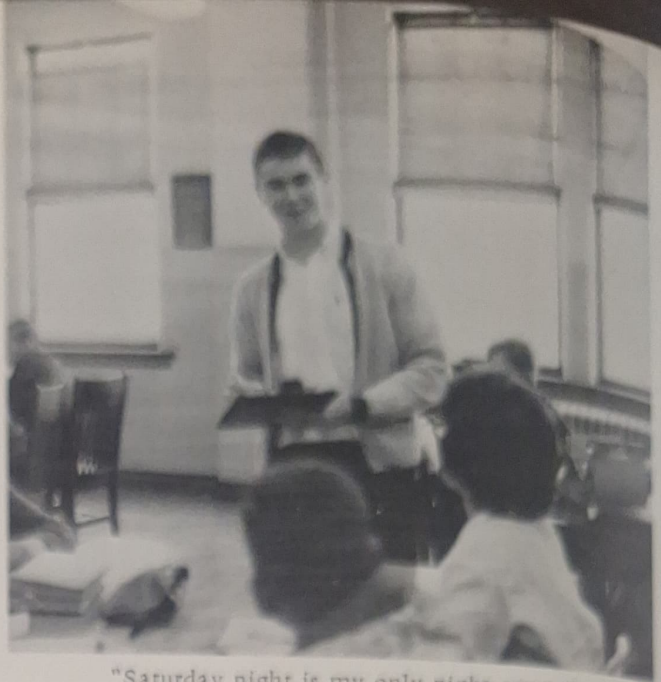
What's funny about this?

Seniors Last Again.





Behind the scenes



"Saturday night is my only night open."



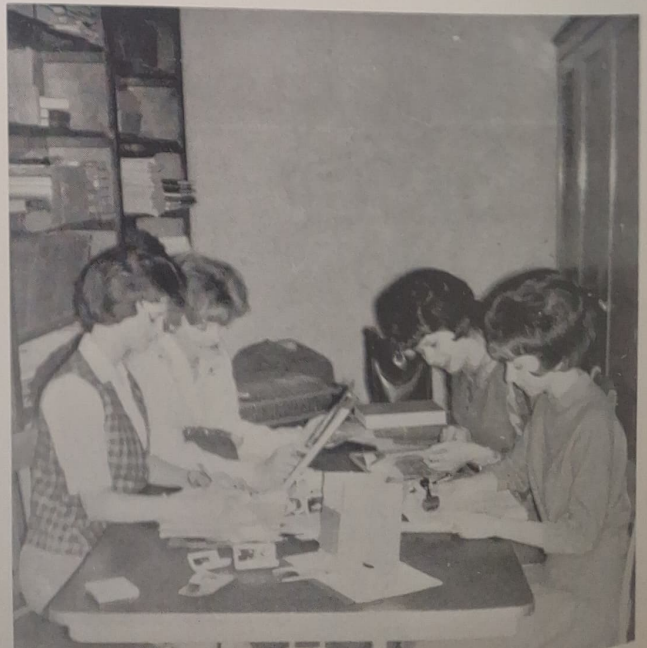
Steak again!



"And they said this job was HARD!"



A typical teacher's school day



Working--as usual??



# CONTRIBUTORS TO THE 1964 WARRIOR

DON ADAMS CONSTRUCTION COMPANY	DAHMS DRIVE-IN
FRED'S TRUCK LINE	UPWARD AND SON SERVICE
WEVERKA GRAVEL CONTRACTING	LONGSINE BROTHERS
DERBY CAFE	LLOYD'S COLOR CENTER
JAKE McCOY-TERRACES	ELIASON GRAIN COMPANY
LIBERTY FLORAL	WAGNER'S SUPER MARKET
LIFE BAKERY	BOB'S RADIATOR AND WELDING
WILLIAMSON-HASSE FUNERAL HOME	ARAPAHOE BODY SHOP
SECURITY STATE BANK	WILLIAMS BROTHERS COMPANY
ARAPAHOE TELEPHONE COMPANY	BUSCH'S STANDARD SERVICE
STACY McCOY-AUCTIONEER	THE REXALL STORE
LALLMAN'S WRECKING YARD	PERRY LUMBER COMPANY
MAGNETO-ELECTRIC SHOP	SEXTRO SALES AND SERVICE
TILL GRAIN COMPANY	GAY'S IGA
ARAPAHOE CO-OP ASSN.	NECCHI SALES AND SERVICE
CUNNINGHAM'S FEED AND PRODUCE	SCHRODER'S CLEANERS
LAMMEL'S PLUMBING AND HEATING	KELA'S BEAUTY SHOP



BILL'S LUNCH	AL "TEX" FRITZ-AERIAL SPRAYING
MORRIS DRUG STORE	McCOY MOTEL
HEMELSTRAND'S HARDWARE	ROCK INN
MAGORIAN'S DAISY QUEEN	C. A. MUES REST HOME
COX PRINTING COMPANY	ARAPAHOE JAY CEE'S
RICHARD'S PRODUCTS MFG.	FAW'S GARAGE
CRYSTAL THEATER	CULLIGAN SOFT WATER SERVICE
LEWIS BROTHERS GROCERIES	SANDY'S SALON
LOCKENOUR FURNITURE STORE	ROGER PENTZ, D.D.S.
KOELMEL'S BARBER SHOP	W & W SERVICE
FRANCES BEAUTY SHOP	COAST-TO-COAST
CITIZENS STATE BANK	POLICYHOLDERS AGENCY
MOSBARGER & EMS CONSTRUCTION	GORDON D. FRANCIS, M.D.
ARAPAHOE READY MIX	J. P. PATTIN, D.O.
GUST MARTENS-BLACKSMITH	VIC'S COMMERCIAL HOTEL
ELAND RADIO AND T-V	MFA INSURANCE
BABBIT AND GATES TEXACO SERVICE	EVANS SERVICE STATION
STURGEON'S PHILLIPS 66	NATIONAL INVESTORS LIFE INSURANCE CO. OF NEBRASKA REX EARL POORE 908 East 2nd St. Representative McCook, Nebraska
MID-VALLEY BOWLING LANES	