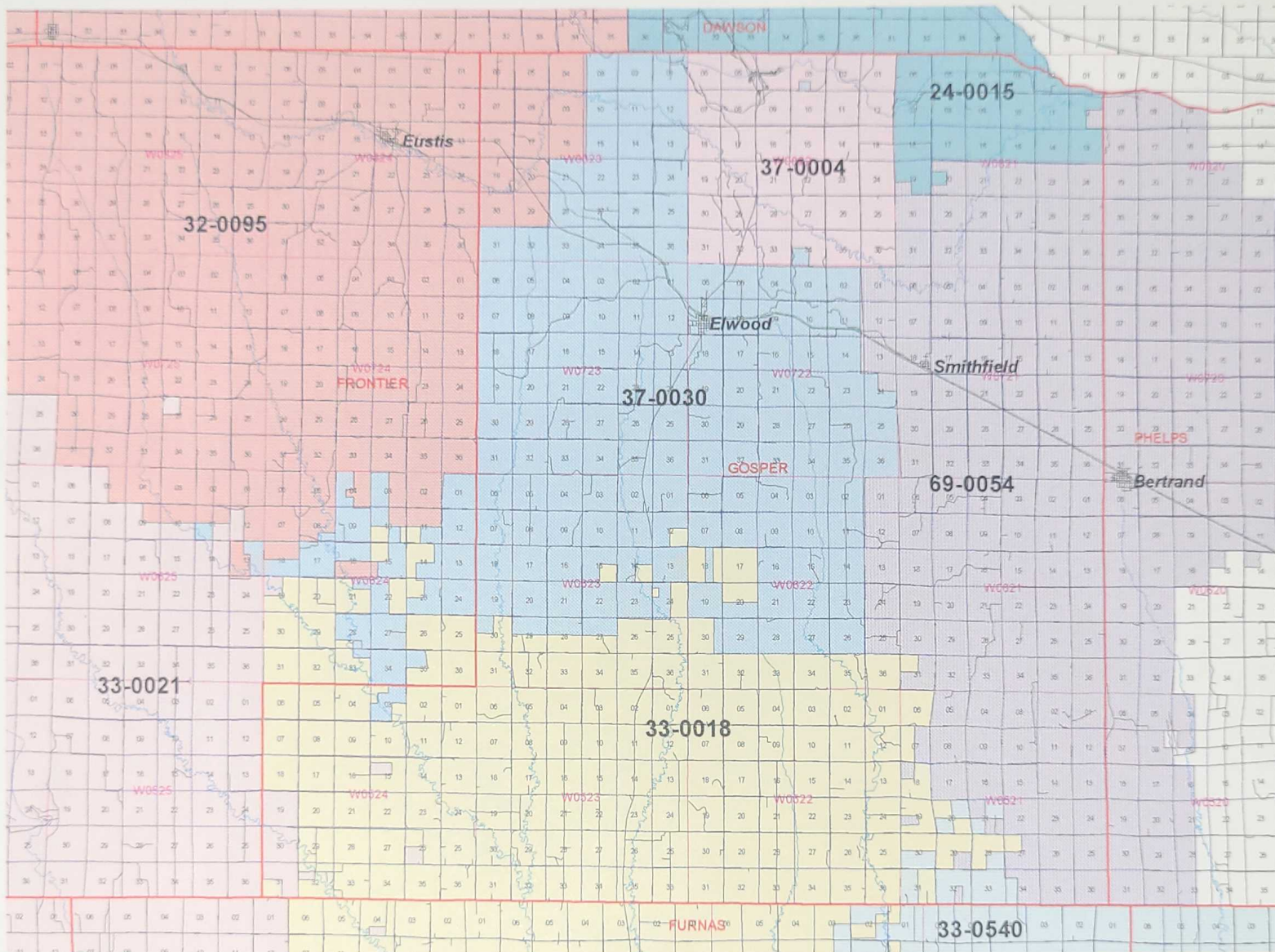




# Gosper County School District Boundaries



- County Boundaries
- Roads
- Townships
- Sections
- Streams
- Railroads
- Class 2-3 District
  - 32-0095 Eustis-Farnam
  - 33-0018 Arapahoe
  - 33-0021 Cambridge
  - 33-0540 Southern Valley
  - 37-0030 Elwood
  - 69-0054 Bertrand
- Class 1 District
  - 24-0015 District 15
  - 37-0004 Bethel

**PROPERTY OF  
GOSPER COUNTY SUPT.  
GOSPER COUNTY  
ELWOOD, NE**



#1

SUNFLOWER SCHOOL  
STILLMAN

LEGAL DESCRIPTION OF SCHOOL  
NE 1/4-NW 1/4 32-5--23

1895-SUNFLOWER (STILLMAN) Christian Day School  
Started in Elk Creek precinct-school held part of term at  
St. Matthew and balance of term at Trinity Church in Arapahoe.  
Reopened in 1923 until 1942. Opened again in 1951 and  
Discontinued July 1, 1956 and attached to District #18.



Description of School Districts in *Gosper*

County, as shown by Map ~~No.~~ Made  
*Jan 13<sup>th</sup> 1894*

No. of District	Date of Formation			DESCRIPTION—PARTS OF SECTIONS	SECTIONS	TOWN	RANGE	REMARKS
	Year	Month	Day					
<i>1</i>				<i>Stillman</i>	<i>All of</i>			
					<i>19</i>			<i>Discontinued by petition of 55% of voters Sec. 79, 402, Nebraska School Laws and attached to District #18 Furness County, July 1, 1956</i>
					<i>20</i>			
					<i>21</i>			
					<i>28</i>			
					<i>29</i>			
					<i>30</i>			
					<i>31</i>			
					<i>32</i>			
					<i>33</i>	<i>5</i>	<i>23</i>	

PROPERTY OF  
GOSPER COUNTY SUPT.  
GOSPER COUNTY  
ELWOOD, NE



SUNFLOWER SCHOOL  
Stillman

Additional Information

1896--Description Sections-19, 20, 21, 28, 29, 30, 31, 31,35,  
T. 5 R. 23

1900--Frame Schoolhouse constructed-Class I  
Seating Capacity-20  
Heating-Jacketed Stove  
No Electric Lights or Toilets

1918-- Teacher-Bess Richards  
Number of pupils between 5 & 21 years attending school  
17 males & 14 females-total 31  
8 months of school taught or 159 days  
Number of square yards of blackboard-4 yards  
Teacher salary per month-\$60.  
Number of students completing 8th grade-1-boy & 1-girl

Students: Arthur Huxoll  
Carl Menze  
Gerhard Mohrman  
Emil Stagemeyer  
Albert Toomey

1919--Teacher-Ellis Dunlap  
6 1/2 Months taught  
Number of square yards of blackboard-4 square yards  
Value of School Library-\$35.00  
Number of trees on school grounds-None  
Teacher's salary per month-\$55.00  
Number of pupils completing 8th grade-4 males & 2 girls

total 6

Pupils not absent during the year-1 student

Number of pupils between 5 & 21 years of age--18 males &  
17 females

Age enrolled during the school year-total-35



# SUNFLOWER SCHOOL

#1

## TEACHERS

1915-HAZEL LONG  
1916-MATTIE MORSE  
1916-BESS RICHARDS  
1917-BESS RICHARDS  
1918-BESS RICHARDS  
1919-ELLIS DUNLAP  
1920-ROSE E. HILKER  
1921-ROSE E. HILKER  
1922-ESTHER BLACKMAN  
1923-ESTHER BLACKMAN  
1924-ETHEL LEWIS  
1925-ESTHER BLACKMAN  
1926-FERN MOORE  
1927-BERNICE GLOW  
1928-GERTRUDE WARNER STEWART  
1929-  
1930-CLARA KRUMME  
1931-  
1932-HELEN OLSON

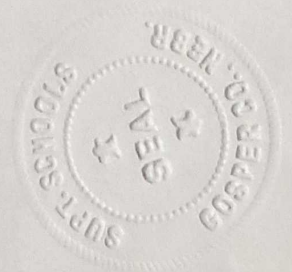
#2

## UNION RIDGE

LEGAL DESCRIPTION OF SCHOOL  
NW1/4 NE1/4 11-5-23

### 1879-UNION RIDGE

In the Fall of 1879 a sod school house was erected and the first school terms were held for two months in the spring and fall. Later, sessions were extended to six months and the school was named Union Ridge or District #2.





# Description of School Districts in Gosper

County, as shown by Map No. Made  
Jan 13<sup>th</sup> 1896

STATE JOURNAL CO. BINDERS, Stationers and Printers, Lincoln, Neb.

No. of District	Date of Formation			DESCRIPTION—PARTS OF SECTIONS	SECTIONS	TOWN	RANGE	REMARKS
	Year	Month	Day					
2				Union Ridge all	1 2 3 10 11 12 14 14			
				NE. 1/4 NE. 1/4		5 5	23 23	attached by petition June 15, 1895 Taken from dist No 6
	1956	July		1 Discontinued by petition of 55% of legal voters, Section 79-402 Nebraska School Laws and attached to District No. 18, Furness County.				

PROPERTY OF  
GOSPER COUNTY SUPT.  
GOSPER COUNTY  
ELWOOD, NE



#3

## ROBB SCHOOL

LEGAL DESCRIPTION OF SCHOOL  
SW 1/4 SW 1/4 2-8-21





Description of School Districts in *Gosper* County, as shown by Map No. Made *Jan 13<sup>th</sup> 1896*

No. of District	Date of Formation			DESCRIPTION—PARTS OF SECTIONS	SECTIONS	TOWN	RANGE	REMARKS
	Year	Month	Day					
3	<i>Mar</i>	<i>"</i>	<i>Robb</i>	<i>all</i>	1 2 3 10 11 12 13 14 15	<i>8</i>	<i>21</i>	
<i>Boundaries changed April 3, 1911 and are now as below:</i>								
				<i>all of</i>	1 2 5 10 11 12 13 14 15			
<i>North half of northeast quarter</i>								
<i>Boundaries changed July 6, 1945 and are now as given below:</i>								
				<i>all of</i>	1			<i>Attached by petition.</i>

all of

- 1
- 2
- 3
- 10
- 11
- 12
- 13
- 14
- 15

8 21

Attached by petition.  
S $\frac{1}{2}$ , NW $\frac{1}{4}$ , S $\frac{1}{2}$ NE $\frac{1}{4}$ .  
Sec. 15 T. 8 - R. 21.

Boundaries changed November 24, 1952 and are now as given below:

all of

- 1
- 2
- 3
- 4
- 5
- 6
- 7
- 8
- 9
- 10
- 11
- 12
- 13
- 14
- 15
- 16
- 17
- 18

8 21

Area from Dist #42,  
Sec. 4, 5, 6, 7, 8, 9, 16, 17 + 18. Townships  
Range 21 attached by petition  
with 55% of legal vote.  
Sec. 79-402-



No. of District	Date of Formation			DESCRIPTION - PARTS OF SECTIONS	SECTIONS	TOWN	RANGE	REMARKS
	Year	Month	Day					
3	1955	4	15	Continued from page 3. all of	1 2 3 4 5 6 7 8 9 10 11 12 13 14 15 16 17 18 19 20			Area from Dist. #22 attached by Freeholder's Petition. In. 79-403.
				$N\frac{1}{2} + SE\frac{1}{4}$ $N\frac{1}{2} SW\frac{1}{4} + S\frac{1}{2} NW\frac{1}{4}$		8	21	
6	15	70	Discontinued by petition under Section 79-402, Neb. Laws and merged with District No. 31, Dawson County from School District No. 103 Dawson County.					School is
	1976	June	1	SE $\frac{1}{4}$	12	8	21	Freeholder's Petition

from School District No. 103 Dawson County.

1976 June 1

SE 1/4

12

8

21

Freeholders Petition  
from Dist. 103 Georgia  
Dawson Co. to  
Dist. # 63 Georgia +  
548 Phelps Cos.  
Sec. 79-403  
Donald D. Phillips.



## ROBB SCHOOL DISTRICT #3

Robb School was located in the southwest corner of Section 2 in northeast Robb Precinct almost directly south of the present day Phelps County Diversion on the tailrace below Johnson No. 2 Hydro-electric power plant. It is not known just what year the School was organized, but records show School being held as early as 1893.

Teachers who taught at District Three thru the years, include; Belle Gunn, Grace Brown, Flora Bliss, Jennie Hanna, Ada Nelson, Dora M. Bernlson, J. Kate Robb "Catherine Robb," Susie Irene Robb, Ruth Clark, Sarah E. Burns, Effie Major, Luella Knapple, Almeda B. Zimmerer, Mary Arnold, Miss Bell, Myrtle Matson, Odessa M. McKee, Maude Shepherd, Margie Morgan, Margaret Hanson, Martha M. Steele, Emma Cummings, Josephine Montgomery, Florence Peterson, Mildred Chambers, Ruth Cummings, Vera Flodman, Rosalie Kjar, Margaret Harris, Marion Godfrey, Margaret Sheldon, Emogene Walbridge, Grace Isaacson, Wilma Johnston "Mrs. Russell Whistler," Mabel English, Ruth Decker, Phyllis Meyer "Mrs. Martin Meyer," Vivian Cooley "Mrs. Harold Von Loh," Ethel Rhoadarmer and Blanche Carpenter.

In the school year 1951, the Students from District three transferred to District 42 the Rawson School, formerly known as the "Stone School." The District Three Schoolhouse was moved away and the land reverted back to the Robb Ranch.

Families who had children attending Robb School thru the years include: H. L. Stuart, Jephtha Lantz, Jonathan Lantz, William Robb, James Robb, John M. Robb, O. C. Middleton, Samuel Burns, John Keeley, S. P. Crantz, Samuel Yoder, John Teets, S. B. Cole, F. F. Dunn, Frank Scholfield, Martin Shadle, J. E. Mather, Elmer Renstrom, August Meyer, Lester Wolfe, David Crantz, B. F. Scott, P. J. Jeffrey, F. F. Lantz, C. H. Bowen, J. M. Wallace, George Blevins, Beatta Swanson, A. R. Kauffman, R. O. Case, Solomon Joy, Wiley Shores, Ernest Crantz, Clyde Wallace, Bill Jeffrey, Norman Jeffrey, Conrad Renken, Harold Olson, Charles Higbee, Ab Hanson, Claude Blevins, William Lantz, Leslie Phillipi, Verle Francis, Kenneth Walston, Stewart Mitchell, L. E. Bock and other families where only the surname was shown, Culver, Esh, Knapple, Cockerham, Sawyer, Nisley, Berg, Nelson, May, Jones, Carroll, Max, Anderson, Cummings, Farmer, O'Neal, Bauer, Krouse, Smith, Cavaness, Whitcomb, Hanna, Hosick, Sutherland, Mosher, Tanner and Coffey.

The School building was not just a one room schoolhouse. In the 1940s it consisted of three rooms upstairs, the classroom with windows on the north and west, with a small broom closet in the southwest corner, a library on the southeast and a hall where the sink and

pitcher pump, and storage for costs and lunchpails was located on the south, the entry came directly into the hall. There was a covered porch on the south side of the building, with steps leading down both east and west. The schoolhouse was situated over a full basement and had a storage bin for cobs and one for coal, and a large pipe furnace furnished heat for the winter months. Some years later a floor furnace was installed to provide additional heat. Bathroom facilities were provided for by two WPA "Two-holers" one in the northwest corner and one in the northeast corner. The swings were located in the southwest corner of the schoolgrounds and a flagpole was located in front of the Schoolhouse. There were also several large cottonwood trees on the grounds and a couple in the edge of the field adjoining the west fence. All that remains today is a small depression where the basement was once located, but memories remain in many of the people who attended school at District #3.

From: 1890 Smithfield Nebraska 1990

Small Town--Big Heart

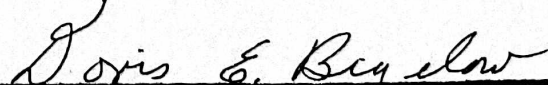
To School Board Members of Districts No. 3 and 42:

ORDER OF COUNTY SUPERINTENDENT OF  
GOSPER COUNTY SCHOOLS, NEBRASKA

WHEREAS, petitions have been filed in this office on November 10, 1952 signed by at least 55% of all the legal voters of School Districts No. 3 and No. 42 requesting the following change of boundary: "That School District No. 42 consisting of Sections 4,5,6,7,8,9,16,17, & 18 of Township 8 Range 21, Gosper County, Nebraska be dissolved and the boundary line between Sections 3 & 4, 9 & 10 and 15 & 16 of Districts 3 & 42 be removed and that all of Sections 4,5,6,7,8,9,16,17, & 18 in Township 8 Range 21 of Gosper County, Nebraska be attached to and become a part of District No. 3 consisting of Sections 1,2,3,10,11,12,13,14 and 15 in Township 8 Range 21 of Gosper County, Nebraska.", sworn statements showing the names of all the legal voters of such districts having also been filed herein, legal notices of the filing of such petitions and notices of the date of hearing having been posted and said hearing having been held on November 17, 1952 according to law,

NOW, THEREFORE, I, Doris E. Bigelow, County Superintendent of Gosper County, Nebraska, by authority of the laws of the state of Nebraska and the powers vested in me by such laws do hereby declare that District No. 42 be attached to and become a part of District No. 3 of Gosper County, Nebraska and hereafter such School District shall be known as School District No. 3 of Gosper County, Nebraska.

Witness my hand this 24 day of November, 1952.

  
County Superintendent of Schools  
Gosper County, Nebraska



# PROOF OF PUBLICATION

## NOTICE

### Of Freeholders Petition for Change of the School District Boundaries.

Notice is hereby given that upon the 28th day of March 1955, a petition for change of school district boundaries will be presented to the County Superintendent, Gosper County and hearing on same will be held before the said Board at the County Superintendent's office at Elwood, Nebraska at 1:00

1, to-wit:

To set off the following described land from School District No. 22 Gosper County, Nebraska, and attach the described land to School District No. 3, Gosper County, Nebraska, to-wit: The N $\frac{1}{2}$  and SE $\frac{1}{4}$  of Section 19 and the N $\frac{1}{2}$ SW $\frac{1}{4}$  and the S $\frac{1}{2}$ NW $\frac{1}{4}$  of Section 20 all in Township 8, Range 21, Gosper County, Nebraska.

Posted on the 11th day of March 1955.

By LEON HIGH,  
A Legal Voter of Said District. 17

STATE OF NEBRASKA,  
GOSPER COUNTY, SS.

I, Mervin Deck, being duly sworn, on my oath depose and say I am the publisher of THE ELWOOD BULLETIN, a legal weekly newspaper of general circulation, printed and published in Elwood, said county and state, and that the notice of which one on the margin hereof is a true copy, was published in the regular and entire issue of said ELWOOD BULLETIN on the following days of publication, to-wit:

Thursday, March 17, 1955 Thursday, -----19-----

Thursday, -----19----- Thursday, -----19-----

Thursday, -----19----- Thursday, -----19-----

Mervin Deck

Subscribed and sworn to before me this 17 day of March 1955

Fee \$ 4.05

Leon High

Notary Public

My commission expires 3/30 1959

#4

BLOODY HILL (ROCK CANYON)

LEGAL DESCRIPTION OF SCHOOL  
SE 1/4 SE 1/4 2-5-24



Jan 13, 1896

STATE JOURNAL CO. Litho. Book Makers, Stationers and Printers, Lincoln, Neb.

No. of District	Date of Formation			DESCRIPTION—PARTS OF SECTIONS	SECTIONS	TOWN	RANGE	REMARKS
	Year	Month	Day					
4				Prock Canyon (West Muddy)	all 1 2 11 12	5	24	Discontinued by petition and annexed to Dist. No. 17 June 20, 1949.

PROPERTY OF  
GOSPER COUNTY SUPT.  
GOSPER COUNTY  
ELLWOOD, NE

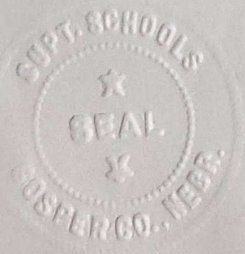
#4

## (NEW) BETHEL SCHOOL

Legal Description of School  
S 1/2, SW 1/4 15-8-22

### 1951 DISTRICT #4 (BETHEL)

District #4, northeast of Elwood, was formed in 1951. The school was taught by two teachers until 1973-74, when it had a full time and part-time teacher. Since 1979, District #4 has had two full-time teachers. Seventh and Eighth Grade students contracted to attend school in Elwood or Lexington. Modern brick school/hot lunch in school; since 1970. First cook Mrs. Henry Schmeackle. The doors of this schoolhouse are still open and having classes.









#4

District 52 merged with #4

Left to Right

Dick Debban, Alton Bossung, Pat Debban Hesse, Betty Berke Erickson,  
Sandra Willets, Linda Morton

Back Row

Marilyn Fyfe Morton, Marilyn Wade Dawson, Karen Leggott, Carolyn  
Gerlen (not pictured.)



1952 school





# 5

Teacher	Enrollment	Salary	Length of School Yr.
1915 Myrtle Whiskey	5	\$ 40.	7 months 139 days
1916 Flossie McKinney	9	\$ 50	7 months 140 days
1917 Lillian Myles	6	\$ 50	6 1/2 months 129 days
1918 Bernice Stevens	5	\$ 50.	6 months 119 days
1919 Bernice Stevens	6	\$ 55.	6 months 119 days
1920 Alice Harman	5	\$ 55.	6 months 120 days
1921 Lucille Schwan	6	\$ 80.	6 months 120 days
1922 Cora Van Borsbik	7	\$ 90.	7 months 140 days
1923 Beulah Bragg	6	\$ 75. <sup>00</sup>	7 months 140 days
1924 Evelyn Dickerson	5	\$ 70. <sup>00</sup>	8 months 160 days
1925 Evelyn Dickerson	8	\$ 75.	8 months 157 days
1926 Myrtle K. England	8	\$ 75. <sup>00</sup>	8 months 159 days
1927 Alice Baker	9	\$ 90. <sup>00</sup>	8 months 158 days
1928 Alice Baker	8	\$ 95. <sup>00</sup>	8 months 156 days
1929 Inez M. Fong	5	\$ 80. <sup>00</sup>	8 months 156 days
1930 Inez M. Fong	5	\$ 80. <sup>00</sup>	8 months 156 days
1931 Dorothy V. Lettner	4	\$ 65. <sup>00</sup>	7 months 137 days
1932 Phyllis Dawson	5	\$ 60.	8 months 152 days

### Interesting Notes

1916 - Wood structure

Seating capacity - 20

Windows 3W + 3E

Coal Heating

Electric Lights

No Indoor toilets

Water supply (well)

February 6, 1959

Mr. Wilbur Brell  
Smithfield,  
Nebraska

Dear Mr. Brell:

I wish to take this opportunity of submitting a report to you of my visit of your school lunch program on Monday, February 2. Although I did not arrive in time to eat lunch I certainly wished I had for a very fine meal had been served. When I analyzed it I found it to be adequate in all respects. I also checked the menus to be served the remainder of the week and some that had been served in the past. All of them appear to be very good. Your cook has done an excellent job in planning her menus to meet requirements of the agreement.

I would like to make a few suggestions for improving your program further. Your storeroom should be provided with slotted racks or shelves on which to store commodities and other food supplies. No food supplies should ever be stored on the floor. It is also well to arrange all school lunch supplies on one side of the room and other on the other side. There should also be a thermometer in the storeroom.

I would also like to suggest that you purchase a large garbage can to receive milk cartons and other paper. It should have a lid and I'd like to suggest that it be made of heavy duty plastic as it would be much easier to clean and sterilize.

On occasions it is necessary for your cook to use some chipped and cracked plates. This is a violation of our State Health Department regulations. I also noted that all plates are quite small making it difficult for the cook to serve the lunch in the most attractive way. I suggest that you discard all chipped and cracked plates immediately and start a program of replacing the entire supply with 10" X 14" heavy duty plastic trays. These could be purchased a few at a time if it cannot all be accomplished at once.

Mrs. Nisley came to the school at the time of my visit to discuss the records and reports with me. I am pleased to report that it appeared that all required records were kept in good shape and reports have been submitted in accordance with instructions.

I was pleased with the operation of your program in general and am confident it is proving to be a big asset to your school. We hope it will be possible for you to improve it by making the above mentioned improvements. When you have done so, we would like to be advised. If our office can be of further service to your program, do not hesitate to call on us.

Sincerely yours,

ALLEN A. ELLIOTT, DIRECTOR  
School Lunch Program

AAE/ekw  
cc. County Superintendent and  
President





## *Elwood Librarians visit District 4*

The librarians of the Elwood Public Library made their first visit to the school in District 4 on Monday, September 10. Jane Hilton and Sharon Nelson took 200 books for the 36 students to look through and check out.

Chairman of the Elwood Library Board, Janet Schutz, was also on hand to assist librarians during their first excursion to the school. Schutz said that they will travel to the country school every two weeks in order to help the school stay accredited according to state law.

Teacher Pat Sharp was sorry to have lost the services of the Bookmobile after 14 years but "was sure the Elwood Librarians would do just fine."

During the hour that the children made use of the books available, Nelson and Schutz helped them find books according to their interests. If books were not on hand, promises were made to bring available books from the public library on the next visit. (Bulletin Photo)



DESCRIPTION OF SCHOOL DISTRICTS IN GOSPER

Page 2

STATE OF NEBRASKA, COUNTY OF GOSPER, NEBRASKA

No. of District	Date of Formation			DESCRIPTION—PARTS OF SECTIONS	SECTIONS	TOWN	RANGE	REMARKS
	Year	Month	Day					
4R	6	1	1975	Continued from Page 4 All	1 2 3 4 5 6 7 8 9 10 11 12 13 14 15 16 17 18 19 20 21 22 23 24 25 26 27 28 29	8	22	Given the present form by Freeholders petitions according to Sec. 79-403 of 1973 School Laws. Wilson + Larry Bell. SW 1/4 of Section 34, Town 8 Range 22.

PROPERTY OF  
GOSPER COUNTY SUPT.  
GOSPER COUNTY  
ELWOOD, NE



HR 1951 March 29 New District (Bethel)

all

- 1
- 2
- 3
- 4
- 5
- 6
- 7
- 8
- 9
- 10
- 11
- 12
- 13
- 14
- 15
- 16
- 17

District formed from Districts 24-52, 53 + 50 by petition of 55% of voters in each district.

Organization meeting held April 5, 1951.

**PROPERTY OF  
GOSPER COUNTY SUPT.  
GOSPER COUNTY  
ELWOOD, NE**

Page 3

PROPERTY OF  
GOSPER COUNTY SUPT.  
GOSPER COUNTY  
ELWOOD, NE

27

30

31

32

33

34

35

36

8

22



Description of School Districts in *Gosper* County, as shown by Map No. Made *Jan 13, 1896*

No. of District	Date of Formation			DESCRIPTION—PARTS OF SECTIONS	SECTIONS	TOWN	RANGE	REMARKS
	Year	Month	Day					
5				<i>Sam. Abraham</i>	<i>all</i>			
					<i>7</i>			
					<i>18</i>	<i>5</i>	<i>21</i>	<i>Discontinued by petition, Sec. 79-402, Neb. School Law and attached to District No. 7, June 1, 1955.</i>
				<i>all</i>	<i>11</i>			
					<i>12</i>			
					<i>13</i>			
					<i>14.</i>	<i>5</i>	<i>22</i>	

#6

## SNYDER SCHOOL

LEGAL DESCRIPTION OF SCHOOL  
SW 1/4 SW 1/4 23-5-23



Description of School Districts in *Gosper*County, as shown by Map No. 4  
*Jan 13 1896*

STATE JOURNAL CO., Blank Book Makers, Stationers and Printers, Lincoln, Neb.

No. of District	Date of Formation			DESCRIPTION—PARTS OF SECTIONS	SECTIONS	TOWN	RANGE	REMARKS
	Year	Month	Day					
6				<i>Jack Snyder</i>	<i>All</i>			
					15			
					22			
					23			
					25			
					26			
					27			
					34			
					35			
				<i>W2 and SE4</i>	14			
				<i>W2</i>	13			
				<i>W2</i>	24	5	23	

#6

NE 21N 7

14

5

23

Detached from No 6 and attached to Dist No 2 by petition

1956 March

31

NW 4 NE 4 Sec. 24 Town 5 Range 23 attached by petition of 55% of legal voters from Dist. No. 18 + 20

1955 9

1956 July

1

Discontinued by petition of 55% of legal voters, Section 79-402, Nebraska School Laws, and attached to District # 18 Furness County



Albert Stagemeyer

#6

Teacher	Enrollment	Salary	Length of school year	
1915 Frank C. Baker	11	\$50. <sup>00</sup>	8 months	159 days
1916 Jessie Johnson	10	\$50. <sup>00</sup>	8 months	159 days
1917 Cleora Eng	18	\$50. <sup>00</sup>	8 months	159 days
1918 Nina G. Thomas	22	\$60.	8 months	159 days
1919 Helen Stevens	20	\$60.	8 months	158 days
1920 Hazel Elster	16	\$70.	8 months	156 days
1921 Ethel Scott	21	\$90.	8 months	159 days
1922 Gertrude Messinger	15	\$100. <sup>00</sup>	9 months	180 days
1923 Vera Boyd	20	\$85. <sup>00</sup>	9 months	179 days
1924 Irma McCoy	22	\$80.	8 months	157 days
1925 —				
1926 Josephine Mayer	20	\$75.	8 months	159 days
1927 Lloyd McCann	20	\$80. <sup>00</sup>	8 months	159 days
1928 Lloyd McCann	17	\$90.	8 months	157 days
1929 Deenie Smith	22	\$80.	8 months	180 days
1930 Marie Yeoman	18	\$85. <sup>00</sup>	8 months	157 days
1931 Ruth Hamop	8	\$80.	8 months	155 days
1932 Jean Richards	6	70. <sup>00</sup>	8 months	155 days

June 15, 1898

July 1, 1954 Discontinued by petition of 55% of legal voters. 79-402 attached to #18 Furness Co.

1885 - Frame Schoolhouse

Seating capacity - 15

Water supply (well)

No electric lights

No electric indoor toilets

## PROOF OF PUBLICATION

STATE OF NEBRASKA,  
GOSPER COUNTY, SS.

**NOTICE OF HEARING**  
Change of Boundary of School  
Districts No. 6 and 18,  
Gosper County, Nebraska

Notice is hereby given that a public hearing will be held in the matter of Change of Boundary by petition of School Districts No. 6 and 18, Gosper County Nebraska as follows: That the NW $\frac{1}{4}$ NE $\frac{1}{4}$  of Section 24 Town-5 Range 23 of School District No. 18 be attached to School District No. 6, Gosper County, Nebraska according to Section 79-402, Nebraska School Laws.

Said hearing will be held in the office of the County Superintendent Elwood, Nebraska, March 31, 1956 at 10:00 a.m., at which time all persons interested will be given an opportunity to be heard.

DORIS E. BIGELOW,  
County Superintendent  
22 Elwood, Nebraska.

I, Mervin Deck, being duly sworn, on my oath depose and say I am the publisher of THE ELWOOD BULLETIN, a legal weekly newspaper of general circulation, printed and published in Elwood, said county and state, and that the notice of which one on the margin hereof is a true copy, was published in the regular and entire issue of said ELWOOD BULLETIN on the following days of publication, to-wit:

Thursday, March 22 1956      Thursday, \_\_\_\_\_ 19\_\_\_\_

Thursday, \_\_\_\_\_ 19\_\_\_\_      Thursday, \_\_\_\_\_ 19\_\_\_\_

Thursday, \_\_\_\_\_ 19\_\_\_\_      Thursday, \_\_\_\_\_ 19\_\_\_\_

*Mervin Deck*

Subscribed and sworn to before me this 27<sup>th</sup> day of March 1956

*Paul R. Drugg*

Fee \$ 3.40

Notary Public

My commission expires Jan 13, 1956

*Elmo E Russell #6*

*Wayne Dunlap #18*



#7

## ROBERTS SCHOOL

LEGAL DESCRIPTION OF SCHOOL  
NE 1/4 SE 1/4 25-5-22

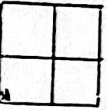
1955-District 7 originated in 1955. This was a modern brick school house with restrooms, hot and cold water, refrigerator, television, modern style desks.

### **DISTRICT 7**

District 7, located in the southeast corner of the county, originated in 1955. This was a modern brick school house with restrooms, hot and cold water, refrigerator, television and late style desks. Mabel Blaise taught classes for the 1970-1971 school term with ten pupils in attendance. Classes were still being held in 1973.

#7

SW corner Section 19 Township 5 North Range 01 -- 1½ acres





Map No. Made

Description of School Districts in *any order*

County, as shown by map No. 14 ad  
Jan 13, 1896

REMARKS	No. of District	Date of Formation			DESCRIPTION—PARTS OF SECTIONS	SECTIONS	TOWN	RANGE	REMARKS
		Year	Month	Day					
	7				<i>all</i>	19 30 31 24 25 36	5	21 22	
		1954	Aug.	23	Boundaries changed and are now as given below:	<i>all</i> 19 20 21 28 29 30 31 32 33 W 2 W 2 W 2 <i>all</i>			Area attached from Dist. #51 in accordance with Sec. 79-420 Neb. School Laws, 1953.
						24 25 36	5	21 22	
		1955	June	1	Boundaries changed and are now as given below:	<i>all</i> 18 19			Area attached from Dist. #5, 33+37 in accordance with Sec. 79-402.
		1956	April						

all

- 18
- 19
- 20
- 21
- 28
- 29
- 30
- 31
- 32
- 33

W 2  
W 2  
W 2

- 22
- 27
- 34

5- 21

all

- 1
- 2
- 11
- 12
- 13
- 14
- 15
- 22
- 23
- 24
- 25
- 26
- 27
- 34
- 35
- 36

5- 22

E 2  
E 2  
E 2

- 16
- 21
- 28
- 31
- 35
- 36

5- 22  
6 21

all  
all

- 31
- 35
- 36

6 22

all

3+14

5- 22

Notes: 5, 33437 in accordance with Sec. 79-402, Neb. School Laws 1984-55 with 55% of signatures of legal voters in all districts.

area attached in accordance with Sec. 79-420, Neb. School Law



	20		
	26		
B 2	16		
E 2	21		
E 2	28	5	22
All	31	6	21
All	35		
	36	6	22
All	3	5	22
All	10	5	22

7 1978 Aug 31

District dissolved and area attached to neighboring districts as provided by sections 79-486, 79-420 and 79-603 of the Nebraska School Laws as follows:

To District No. 18 Osage & Furness Counties;

W 1/2 NW 1/4	31	6	21
All	35 + 36	6	22
All	4	5	21
W 1/2	7	5	21
NE 1/4, S 1/2	18	5	21
N 1/2, SE 1/4, S 1/2 SW 1/4	19	5	21
NW 1/4	20	5	21
NW 1/4	27	5	21
N 1/2, SW 1/4	28	5	21
N 1/2	30	5	21
E 1/2	31	5	21
All	1-2-3	5	22
	10-11-12	5	22
	13-14-15	5	22
	22-23-24	5	22
	25-26-27	5	22
	34-35-36	5	22
E 1/2	16	5	22

See page 80

Description of School Districts in *Osage*  
 Cont from page 73

County, as shown by Map No.

No. of District	Date of Formation			DESCRIPTION—PARTS OF SECTIONS	SECTIONS	TOWN	RANGE	REMARKS
	Year	Month	Day					
17	1978	Aug	31	To Dist. No. 63-54 Osage + Phelps Counties.				
				E $\frac{1}{2}$ , E $\frac{1}{2}$ NW $\frac{1}{4}$ , SW $\frac{1}{4}$	31	6	21	
				E $\frac{1}{2}$ NW $\frac{1}{4}$	7	5	21	
				N $\frac{1}{2}$ SW $\frac{1}{4}$	18	5	21	
				SE $\frac{1}{4}$	19	5	21	
				NW $\frac{1}{4}$ , SE $\frac{1}{4}$	20	5	21	
				All	21	5	21	
				SW $\frac{1}{4}$	22	5	21	
				SE $\frac{1}{4}$	27	5	21	
				E $\frac{1}{2}$ SW $\frac{1}{4}$	29	5	21	
				N $\frac{1}{2}$ NW $\frac{1}{4}$	32	5	21	
					34	5	21	
				To Dist. no. 4-77 Furness County.				
				NE $\frac{1}{4}$ , SW $\frac{1}{4}$	20	5	21	
				SW $\frac{1}{4}$ , NE $\frac{1}{4}$	21	5	21	
				SE $\frac{1}{4}$	28	5	21	
				N $\frac{1}{2}$ , SW $\frac{1}{4}$	29	5	21	
				SE $\frac{1}{2}$	30	5	21	
				W $\frac{1}{2}$	31	5	21	
				E $\frac{1}{2}$ , NW $\frac{1}{4}$ , W $\frac{1}{2}$ SW $\frac{1}{4}$	32	5	21	
				All	33	5	21	
				SW $\frac{1}{4}$ , SE $\frac{1}{2}$ NW $\frac{1}{4}$	34	5	21	

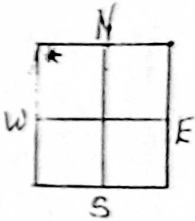


GOSPER COUNTY SCHOOL DISTRICTS

#3

Beginning 60 rods West quarter section corner on north boundary  
of Section 8 Township 8 North Range 21 West ---  $\frac{1}{2}$  acre

Beginning 80 rods west of NE corner of  $NW\frac{1}{4}$  of Section 8 Township  
8 Range 21 W -- 1 acre



PROOF OF PUBLICATION

STATE OF NEBRASKA,  
GOSPER COUNTY, SS.

I, Mervin Deck, being duly sworn, on my oath depose and say I am the publisher of THE ELWOOD BULLETIN, a legal weekly newspaper of general circulation, printed and published in Elwood, said county and state, and that the notice of which one on the margin hereof is a true copy, was published in the regular and entire issue of said ELWOOD BULLETIN on the following days of publication, to-wit:

Thursday, April 21 1955      Thursday, \_\_\_\_\_ 19\_\_\_\_  
Thursday, \_\_\_\_\_ 19\_\_\_\_      Thursday, \_\_\_\_\_ 19\_\_\_\_  
Thursday, \_\_\_\_\_ 19\_\_\_\_      Thursday, \_\_\_\_\_ 19\_\_\_\_

Mervin Deck

Subscribed and sworn to before me this 27<sup>th</sup> day of April 1955

John R. Stogsdal

Fee \$ 2.99

Notary Public

My commission expires Jan. 13 1960

**NOTICE OF HEARING**  
**Merger by Petition of School**  
**Districts No. 5, 33 and 37**  
**with School District No. 7**  
**Gosper County, Nebraska.**  
Notice is hereby given that a public hearing will be held in the matter of the Merger by Petition of School Districts No. 5, 33 and 37 with School District No. 7, Gosper County, Nebraska, according to Section 79-402, Nebraska School Laws. Said hearing will be held in the office of the County Superintendent, Elwood, Nebraska, on May 5, 1955 at 1:30 p.m., at which time all persons interested will be given an opportunity to be heard.  
**DORIS E. BIGELOW**  
County Superintendent  
Elwood, Nebraska.



# SCHOOL BUILDINGS

AT

# AUCTION

District No. 7, Gosper County, will sell the following School Buildings and Equipment at Auction at their various locations, on

## FRIDAY, NOV. 2, 1956

AUCTIONS START AT 1:30 p. m.

### OLD DISTRICT NO. 7 GOSPER CO.

This is known as the Roberts School and is located  $6\frac{1}{2}$  miles north and  $\frac{1}{2}$  mile east of Edison, or 2 miles west and  $1\frac{1}{2}$  mile north of the Union church. The school building is 20x30 ft.; also a small building 6x14 ft.; two outside toilets; 300 gallon fuel tank; some small individual desks; oil heater (good); other miscellaneous items. The building is REA wired and approved, and has light fixtures. Has a large school bell.

### DISTRICT NO. 5 GOSPER CO.

Following the first auction, the sale will continue at Dist. No. 5 (3 miles north and 1 mile west) known as the Abraham school located on the creek near the Vaughn Dawson place. The building is 20x30 ft.; small building 16x6 ft., two good WPA toilets; one Windsor player piano and records: a Waltham piano; writing desk and arm chair; seats and desks; record player; sectional book case; Norge oil heater; 300 gallon overhead tank; 2 hanging oil lamps and brackets; books and supplies; pump and pipe, large bell.

### DISTRICT NO. 33 GOSPER CO.

The sale will then move to Dist. 33 (the old Phillip Grove School) near the Lowell Dawson place. This building is 18x28 ft. with small addition on the front. Has considerable quantity of 2x4's and sheeting, as well as floor joists for salvage. Small outbuilding 6x10 ft.

● The land on these tracts reverts back to original tracts when school is abandoned. However, to clear the title for future records, a quit claim deed should be given by school district to present owners.

### TERMS CASH

*Purchaser given to March 1, 1957 to remove buildings from the premises.*

**Lowell Dawson**

**President School District No. 7,  
Gosper County**

**McCOY and MARTIN, Auctioneers and Clerks**

## Dist. 7 Planning Reunion October 21

Consolidated School Dist. No. 7, Gosper County, is planning a reunion of former teachers and pupils of the five consolidated districts.

Open house will be held at the new school eight miles north of Edison on Sunday, October 21st, from 2:00 until 5:00 p.m.

A short program will be given at two o'clock.

Anyone having old pictures or other mementos of the old school days is asked to bring them. Letters from those who cannot attend will be greatly appreciated.

It is hoped that many old friendships will be renewed at this time. The public is invited to attend.

Mrs. Wiley Anderson is teacher.

## NOTICE TO BIDDERS

Sealed proposals will be received by the School Board of District No. 7 of Gosper County, State of Nebraska, at the present schoolhouse near Edison, Nebraska, until 8:00 P. M. on the 25th day of May, 1956, for construction of a one-story school building, at which time they shall be immediately, simultaneously and publicly opened in the presence of the bidders or representatives of the bidders.

Bids are requested on the three main items of work:

General Construction  
Plumbing, Heating and  
Ventilating  
Electric Wiring

Contractors may bid on any or all items.

Copies of the Plans and Specifications and the Form of Proposal, Contract and Bond are on file with the School Board and may be seen there or a copy may be obtained from Bernard P. Daxon, Architect-Engineer, 411 - 7th Avenue, Holdrege, Nebraska, upon deposit of \$25.00, which will be refunded upon return of the Plans and Specifications in good condition within a reasonable time after receipt of bids. Additional copies may be obtained by paying cost of printing.

All proposals must be submitted on forms provided by the Architect-Engineer and must be legibly written in ink. No alterations in the proposal will be permitted.

Each proposal must be accompanied by a certified check or bidder's bond for the amount of five per cent (5%) of his bid, made payable to School District No. 7, of Gosper County, as evidence of good faith.

The Plans and Specifications will require the contractor to furnish a performance bond in an amount equal to one hundred per cent (100%) of the contract price and bidders may not withdraw their bids for a period of thirty (30) days after the date and time set for the opening thereof.

No obligation of any surety or insurance company will be recognized unless said company is legally authorized to do business in the State of Nebraska.

The Architect-Engineer's estimate of the cost of the work is \$21,112.00.

The School Board reserves the right to reject any or all bids and to waive any or all technicalities.

SCHOOL BOARD OF DISTRICT  
NO. 7 OF GOPER COUNTY,  
STATE OF NEBRASKA

By LOWELL DAWSON,  
5-10-17&24 President.



AFFIDAVIT OF PUBLICATION

The State of Nebraska, )  
County of Furnas. )

I, .....Ralph L. Cox....., being  
first duly sworn, depose and say, that I am the ....publisher of the

.....Public Mirror....., a weekly newspaper  
of general circulation in Furnas County, Nebraska, printed in the Eng-  
lish language, having a bona fide circulation of over 300 copies weekly  
and said newspaper prior to the date of publication of the annexed  
notice has been published within Furnas County, Nebraska, for more  
than 52 consecutive weeks, and has been printed either in whole or in

part in an office maintained by the owners at .....Arapahoe.....  
Nebraska, the place of said publication; that the annexed is a true and  
correct copy of the original notice; that same was published in the  
regular and entire edition of said newspaper and not in any supplement  
thereto in its issues of

August 12, 1954

.....  
.....  
.....  
.....

*Ralph L. Cox*

Subscribed and sworn to before me this .....14 day of

.....August..... 19.....

*Quincy Brown*, Notary Public

My commission expires *Sept. 21*, 19*55*.

.....22 Lines .....1 Times. Publisher's fee \$.....2.86.....

NOTICE OF HEARING

Dissolution of School District  
No. 51 Gosper County, Nebraska  
Notice is hereby given that a  
public hearing will be held in the  
matter of the dissolution of  
School District No. 51, Gosper  
County, Nebraska, and the at-  
taching of said district to School  
District No. 7, Gosper County,  
Nebraska, according to Section  
79-420, Nebraska School Laws.

Said hearing will be held in the  
office of the County Superin-  
tendent, Elwood, Nebraska, Aug-  
ust 23, 1954 at 2:00 P. M. at which  
time all persons interested will  
be given an opportunity to be  
heard.

DORIS E. BIGELOW,  
County Superintendent.  
Gosper County

#8

PRAIRIE GLEN (RUDE)

SW 1/4-NW 1/4 33-5-24



Description of School Districts in *Gospe* County, as shown by Map No. *Jan 13/1896*

STATE JOURNAL CO., Blank Book Makers, Stationers and Printers, Lincoln, Neb.

No. of District	Date of Formation			DESCRIPTION—PARTS OF SECTIONS	SECTIONS	TOWN	RANGE	REMARKS
	Year	Month	Day					
<i>8-Rude</i>				<i>all</i>	<i>20 21 28 29 32 33 27 34</i>	<i>5</i>	<i>24</i>	
	<i>1956</i>	<i>July</i>	<i>1</i>	<i>Discontinued by petition of 55% of legal voters, Sec. 79-402, Nebraska School Laws and attached to District 1R Range 4 103 Linn Co</i>				

#9

## SNOWBALL SCHOOL

LEGAL DESCRIPTION OF SCHOOL  
SW 1/4 SW 1/4 8-5-23

The first school for early settlers in Elk Creek precinct was a dugout which was known as New Lisbon School.

1882-sod schoolhouse built

1887-frame structure erected

1904-name changed to Snowball

1950-district dissolved and attend school in Arapahoe

1 54





= 9

Full  
Goes  
Joey  
Briegel

# Snowball School

Teacher	Enrollment	Salary	Length of School
1915 - Boss Quicks	22	\$ 50.00	8 months 160 <sup>avg</sup> 200 <sup>30%</sup>
1916 - Lawrence W. Bond	<del>23</del> 24	\$ 50	8 months 158 1/2 days
1917 Minnie Horn	25	\$ 55.	7 months 139 days
1918 Lula Keefer	26	\$ 60.	8 months 160 days
1919 Amy Bailey	26	\$ 60.	7 months 142 days
1920 Mae Cowles	14	\$ 75.	8 months 158 days
1921 Anna Thomas	22	\$ 100.	8 months 158 days
1922 Evangeline Peterson	23	\$ 95	9 months 180 days
1923 Caroline Albrecht	24	\$ 95.	9 months 178 days
1924 Carrie M. Stark	26	\$ 90.	9 months 178 1/2 days
1925 Edythe Russell	23	\$ 75.	9 months 179 days
1926 Mathilda Bonar	21	\$ 80.	9 months 180 days
1927 Ruth Pickering	26	\$ 100.	9 months 178 1/2 days
1928 Maude Schroeder	16	\$ 85.	9 months 174 days
1929 Ethel Carpenter	20	\$ 85.	9 months 176 days
1930 Ethel Carpenter	13	\$ 85.	9 months 180 days
1931 Ruth Johnson	19	\$ 85.	9 months 180 days
1932 Jane Cowman	15	\$ 70.	9 months 180 days

Description of School Districts in *Gosper*

County, as shown by Map No. Made  
*Jan 13, 1896*

No. of District	Date of Formation			DESCRIPTION—PARTS OF SECTIONS	SECTIONS	TOWN	RANGE	REMARKS
	Year	Month	Day					
<i>9</i>		<i>Unorganized</i>		<i>All</i>	<i>4 5 6 7 8 9 16 17 18</i>	<i>5</i>	<i>23</i>	
<i>1956</i>	<i>July</i>	<i>1</i>		<i>Discontinued by petition of 55% of voters, Sec. 79-402, Nebraska School Laws and attached to District #18 Turner County.</i>				



## **SNOWBALL**

The first school for early settlers in Elk Creek precinct was a dugout which was known as New Lisbon school. In 1882 a sod house was built and served the community until 1887 when a frame structure was erected. In 1904 the name was changed to Snowball School. The district was dissolved in the 50's and the children now attend school in Arapahoe.

From: Gosper County Supt. Rosemary Stagemeyer &

The Elwood Bulletin--August 7, 1986

RECORD OF THE PROCEEDINGS OF CHANGE OF BOUNDARY OF SCHOOL  
DISTRICTS NO. 1 & NO. 9 AND ATTACHING TERRITORY OF NO.1  
TO NO. 9 ALL IN GOSPER COUNTY, NEBRASKA

On the 19th day of May 1953, Kenneth Packwood, a legal voter of School District No. 9 filed a petition with the County Superintendent as enclosed for the change of school district boundary. Also on the 20th day of May 1953, Chester Hilker, a legal voter of School District No. 1, filed a petition with the County Superintendent as enclosed for change of school district boundary.

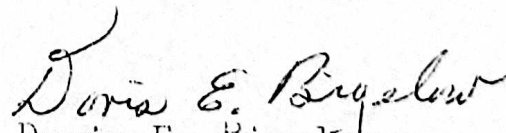
Hearing on said petitions was called for May 26, 1953 at 2 P.M. Said notices of hearing were posted on May 20, 1953 in District No. 9 at the following places: one on schoolhouse door; one by Henry Ross'; and one by the SW corner of Otto Tull's building area. In District No. 1 notices were posted as follows: one on the schoolhouse door; one 1 mile East of schoolhouse and one  $\frac{1}{2}$  mile West of schoolhouse.

On May 25th, 1953 a petition was presented to the County Superintendent requesting that five names be withdrawn from the petition as presented by School District No. 1.

The above request was granted leaving an insufficient number of names on the petition of District No. 1 to carry it by the required 55% vote.

Since the petition from District No. 1 lacked the necessary 55% vote no action was taken at the hearing held on May 26th, 1953.

May 26, 1953

  
Doris E. Bigelow  
County Superintendent



#1 D

# LATHROP SCHOOL

LEGAL DESCRIPTION OF SCHOOL  
SW 1/4 SW 1/4 3-5-24

STATE JOURNAL CO. Blank Book Makers Stationers and Printers Lincoln Neb

Date of Formation			DESCRIPTION—PARTS OF SECTIONS	SECTIONS	TOWN	RANGE	REMARKS
Year	Month	Day					
			all	3 4 9 10 16	5 "	24 "	attached 12/17/06
1859	June	19	Boundaries changed as given below: No. changed to 10th Gosper Co. and 53 Frontier Co.				Discontinued according to Section 79-420, Nebraska School Laws—and area attached to Districts No. 53 Frontier Co. and District No. 103 James County, Nebraska.
			NE 1/4	3	5	24	
			SE 1/4 - NW 1/4	3	5	24	
			SW 1/4	3	5	24	
			SE 1/4	3	5	24	
			South 100 Acres W 1/2 W 1/2	4	5	24	
			SW 1/4 NE 1/4	4	5	24	
			E 1/2 SW 1/4	4	5	24	
			SE 1/4	4	5	24	
			N 1/2 NE 1/4	10	5	24	
			Following area attached to District 103 James Co.				
			N 1/2 NW 1/4	3	5	24	
			SW 1/4 NW 1/4	3	5	24	
			E 1/2 NE 1/4	4	5	24	
			NW 1/4 NE 1/4	4	5	24	
			...	..	..	..	



" "	10	5'	24
SW $\frac{1}{4}$ NE $\frac{1}{4}$	10	5'	24
NW $\frac{1}{4}$	10	5'	24
N $\frac{1}{2}$ SW $\frac{1}{4}$	10	5'	24
NW $\frac{1}{4}$ SE $\frac{1}{4}$	10	5'	24
SE $\frac{1}{4}$ NE $\frac{1}{4}$	10	5'	24
S $\frac{1}{2}$ SE $\frac{1}{4}$	10	5'	24
NE $\frac{1}{4}$ SE $\frac{1}{4}$	10	5'	24
S $\frac{1}{2}$ SW $\frac{1}{4}$	10	5'	24
All	16	5'	24

1970

To District No. 103, Fremont County  
 N  $\frac{1}{2}$  + NW  $\frac{1}{4}$  NE  $\frac{1}{4}$  + S  $\frac{1}{2}$  SW  $\frac{1}{4}$  NE  $\frac{1}{4}$   
 SE  $\frac{1}{4}$   
 N  $\frac{1}{2}$  NE  $\frac{1}{4}$

4	5'	24
3	5'	24
10	5'	24

To District No. 30, Gosper County  
 NE  $\frac{1}{4}$  + SE  $\frac{1}{4}$  NW  $\frac{1}{4}$  + SW  $\frac{1}{4}$

3	5'	24
---	----	----

Area 10 R Gosper Co +  
 53 Fremont Co.  
 attached to school districts  
 #30 Gosper Co. and  
 #103 Fremont Co under  
 Sec. 79-486, Neb.  
 School Laws.

1965

#10

Commencing at the SW corner of the SW $\frac{1}{4}$  of Section 3 in Township 5 North of Range No. 24 West of the 6th P.M. running north along the West line of said section 14 rods; thence due east 10 rods; thence due south 10 rods; thence west along the south line of said section 10 rods to place of beginning.





#11

HOMERVILLE

Legal Description of School  
SW 1/4 NW 1/4 20-6-22

1911-School formed in Turkey Creek

Commencing at the northwest corner of the Southwest quarter of Section 20 Township 6 Range 22 and running thence East 10 rods; thence south 16 rods; thence west 10 rods; thence north 16 rods to place of beginning.



Map No. Made  
892

Description of School Districts in *Gosper* County, as shown by Map No. Made  
Jan 13, 1896

REMARKS	No. of District	Date of Formation			DESCRIPTION—PARTS OF SECTIONS	SECTIONS	TOWN	RANGE	REMARKS
		Year	Month	Day					
attached 12/17/08  is continued according to act 79-420, Nebraska school laws and area attached to Districts 53 Frontier Co. and District No. 103 Furness county, Nebraska.	11				Homerville	S 2	7		
						S 2	8		
					All	17			
						18			
						19			
						20			
						30			
						31			
					W 2	29	6	22	
					SW 4	21	6	22	
		1956	April	2	Boundaries changed and are now as given below:				
					S 2	7	6	22	Area attached from District No. 12 in accordance with act. 79-420, Nebraska School Laws, 1954-55
					S 2	8			
					All	17			
						18			
						19			
						20			
						29			
						30			
						31			
						32			
						33			
						34	6	22	
					SW 4	21	6	22	
					All	5			



part Co 4  
Co.  
with streets  
and  
Co under  
N. 26.

				34	6	22
			SW 4	21	6	22
			all	5-		
				6	5-	22
1957	Sept 19	Boundaries changed and are now as given below:				
			S <sup>r</sup>	7	6	22
			S <sup>r</sup>	8		
			All	17		
				18		
				19		
				20		
				29		
				30		
				31		
				32		
				33		
				34		
			SW 4	21	6	22
			E <sup>r</sup>	5-	5-	22
			All	6	5-	22

Area attached to  
District #18 Furnas  
& Gosper Counties.  
W 1/2 Sec 5. T. 5 N. 22.  
Sec. 79-402  
Nebr. School Laws.

1965 Sept 20 Area attached to School District No. 26 R.  
by Order of District Court number Sec. 79-402 Nebr. School Laws.

#12

PLAINVIEW SCHOOL

Legal Description of School  
SW 1/4 NE 1/4 5-5-22

1889-District drawn by County Supt., John W. Thomas--Sod Schoolhouse.

1890-Annual Meeting

Mr. Shindler-moderator

J.R. Lord-Trustees

M. Anderson-Trustees

J.B. Staples-Trustees held 6 months school

G. A. Stevens to teach for \$30. a month. Agreeded to sweep floors, make fires and see children had sufficient water.

1890-Voted to build wood structure 20X30 ft. with brick foundation was built for \$40

\$10. paid by William Schievelbein for site of schoolhouse to be built

McGuffie Revised Readers were used.

1st Grade Readers cost 14 cents

2nd Grade Readers cost 24 cents

6th Grade Readers cost 60 cents



## Fairview School

As the area was settled, the people became concerned about their children's education. Before a district was formed, a teacher was hired to teach a three-month school term. The teacher was paid twenty dollars a month, the parents of students paid the wages and also took turns boarding the teacher. Classes were also conducted in one of the homes.

In February, 1885, school district number thirty-five was formed. All qualified voters had been notified of the meeting to be held to organize the district. The voters were to be notified either verbally or in a written notice. One of the requirements to be counted as a qualified voter was the ownership of at least one cow. At this first meeting, officers were elected and boundaries discussed.

On April 6, 1885, the first annual meeting was held. At this meeting, it was decided to levy a tax for building purposes and for a teacher's salary. Seventy-five dollars was agreed upon to build and furnish a building.

The first teacher's contract was issued to Miss Lydia Connely on October 20, 1885, for the three month term to begin the last of October. She had already taught the preliminary term.

Miss Connely had attended the Hastings College which had just opened as one of the first students.



## Plainview School

An early record book of District 12, or Plainview, shows a map of the District drawn by John W. Thomas, the County Superintendent, on April 8, 1889.

The annual meeting in 1890 was held at the school house. Mr. Shindler was the moderator, J.R. Lord the director, and M. Anderson and J. B. Staples were the trustees. One motion was voted to have a six month school term with G. A. Stevens to teach for thirty dollars a month. Mr. Stevens also agreed to sweep the floor, make fires and see that the children had sufficient water.

Special district meetings were called several times in 1890 to discuss a new school house. Some voters wanted to build another sod one. After much discussion, that was voted down; and it was decided to build a wooden one. A school house twenty feet by thirty feet with brick foundation was built at a cost of four hundred dollars. Ten dollars was paid William Schievelbein for the site of the new school. The sod building had stood on land leased from Charles E. Reed in October of 1882.

McGuffie Revised Readers were used that year. First grade readers cost fourteen cents, second grade readers, twenty-four cents, with sixth grade readers costing sixty cents.

# 12

Hazel Cross  
Harman2.40  
2.40  
4.80

## Blairview School

Teacher	Enrollment	Salary	Length of School
1915 - J. T. Wiley	29	\$ 55.	8 months 157 days
1916 J. T. Wiley	30	\$ 55. <sup>00</sup>	8 months 159 days
1917 Aileen Power	32?	\$ 55.	8 months 159 days
1918 Aileen Power	32	\$ 60.	8 months 159 days
1919 Hazel Harlan	31	\$ 80.	8 months 132 days
1920 Daisie Weir	29	\$ 80.	8 months 159 days
1921 Daisie Weir	20	\$ 100.	8 months 157 days
1922 Esther Salje	15	\$ 90.	8 months 160 days
1923 Alice Harman	11	\$ 85.	8 months 158 days
1924 Alice Harman	11	\$ 80.	8 months 158 days
1925 Evelyn Adden	15	\$ 75.	8 months 159 days
1926 Evelyn Adden	11	\$ 75.	8 months 156 days
1927 Ethel Scott	10	\$ 85.	8 months 160 days
1928 Ethel Scott	7	\$ 85.	8 months 160 days
1929 Daisie Weir	11	\$ 75.	8 months 158 days
1930 ?			
1931 Myapine Rhodes	4	\$ 70.	8 months 155 days
1932 Myapine Rhodes	6	\$ 70.	8 months 155 days



# Description of School Districts in *Gosper* County, as shown by Map No. *Made* *Jan 13 1894*

STATE JOURNAL CO. Blank Book Makers Stationers and Printers - Lincoln, Neb.

No. of District	Date of Formation			DESCRIPTION—PARTS OF SECTIONS	SECTIONS	TOWN	RANGE	REMARKS
	Year	Month	Day					
12	<i>McDonnell</i>			<i>all</i>	32 33 34	<i>6</i>	<i>22</i>	<p><i>is discontinued according to Section 79-420, Nebraska School Laws and area attached to Districts No. 7, 11 and 18, April 2, 1956.</i></p>
				<i>all</i>	3 4 5 6 7 8 9 10 14	<i>5</i>	<i>22</i>	<p><i>all of sections 3+10 Township 5 Range 22 to Dist. #1.</i></p> <p><i>all of sections 32, 33, 34, E 1/2 29 Township 5 Range 22 +</i></p> <p><i>all of sections 5+6 Township 5 Range 22 to Dist. #11.</i></p> <p><i>all of sections 4, 7, 8, 9, N 1/2 16, Township 5 Range 22 to Dist. #18. Gosper Co. Neb.</i></p>

## **FAIRVIEW**

The preliminary school term, which had to be conducted in order to qualify for the organization of an official school, was held in the home of Hartford Livingston. Lydia Connely, who had just completed her studies at Hastings College, was hired to teach classes.

On February 20, 1885, the County Superintendent, S.B. Yeoman, formed School District 35 outlining the boundaries which contained 15 sections of land.

The first school house was built by the taxpayers of the district from prairie sod. In 1907 a new frame school house was erected and named Fairview school but as time went by it was called the Spring school. This building served the school district until 1942 when the pupils started attending school in Bertrand.



PROOF OF PUBLICATION

NOTICE OF HEARING  
Dissolution of School District  
No. 12, Gosper County,  
Nebraska.

Notice is hereby given that a public hearing will be held in the matter of the dissolution of School District No. 12, Gosper County, Nebraska, and the attaching of said district as follows: Attach Sections 3 and 10 Township 5 Range 22 to School District No. 7; Sections 32, 33, 34 and E 1/2 29 Township 6 Range 22 and Sections 5 and 6 Township 5 Range 22 to School District No. 11 and Sections 4, 7, 8, 9, NW 1/4 16 Township 5 Range 22 to School District No. 18, Gosper County, Nebraska, according to Section 79-420, Nebraska School Laws.

Said hearing will be held in the office of the County Superintendent, Elwood, Nebraska, December 20, 1955 at 2:00 p.m., at which time all persons interested will be given an opportunity to be heard.

DORIS E. BIGELOW,  
County Superintendent  
Elwood, Nebraska. 8-1t

STATE OF NEBRASKA,  
GOSPER COUNTY, SS.

I, Mervin Deck, being duly sworn, on my oath depose and say I am the publisher of THE ELWOOD BULLETIN, a legal weekly newspaper of general circulation, printed and published in Elwood, said county and state, and that the notice of which one on the margin hereof is a true copy, was published in the regular and entire issue of said ELWOOD BULLETIN on the following days of publication, to-wit:

Thursday, Dec. 8, 1955      Thursday, -----19-----  
Thursday, -----19-----      Thursday, -----19-----  
Thursday, -----19-----      Thursday, -----19-----

Mervin Deck

Subscribed and sworn to before me this 8th day of Dec, 1955

Fee \$ 4.05

W. Roy Beer

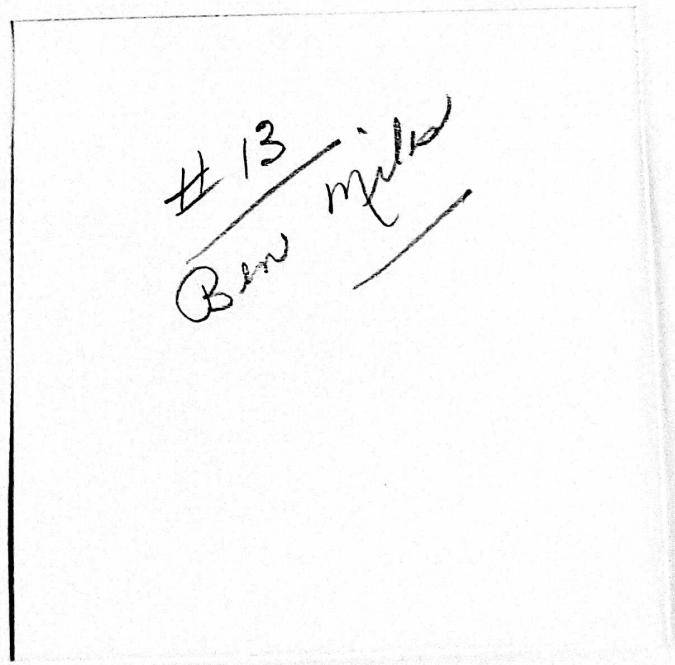
Notary Public

My commission expires 3/30 1959

#13

KEMPTON (STARK)

Legal Description of School  
NW 1/4 SE 1/4 11-6-23









DIST. 13 KEMPTON SCHOOL

Bert Everts, Alvin Ford, Ray Thomas, Maud (Thomas) Carter, Maud Bell, Laura Bell, Will Bell, Valva Wheeler, Esther Anderson, Henry Kempton, Mildred (Graham) Haworth, Dora (Horn) Mason, Minnie Horn, Maud (Horn) Hopkins, Cora (Kempton) Miles, Frank Baisinger, Fanny Everts, Sarah Baisinger, Bessie Everts, Harry Thomas, Ernie Maxwell, Willie Starks, Lee Ford, Norma (Kempton) Roberts, Altha (Pence) Robbins, Emma (Anderson) Sparr, Annie Anderson, Gladys (Horn) Brown, Rosa (Baisinger) Vian, Rena (Pence) Hatch, Clayton Ross, Inar Anderson, Mary (Kempton) Birt, Bert Thomas, Ernie Ford and teacher Lena (Phares) Downer. Sent in by Mrs. Frank Robbins of Edison.

h

1



Description of School Districts in *Gosper*

County, as shown by Map No. *Made*  
*Jan 13 / 1896*

No. of District	Date of Formation			DESCRIPTION—PARTS OF SECTIONS	SECTIONS	TOWN	RANGE	REMARKS
	Year	Month	Day					
13				<i>all</i>	1 2 3 10 11 12 13 14 15	6	29	<i>Discontinued by petition of more than 55% of legal voters and new district No. 26-R was formed from Districts 13, 31 and 55 according to Sec. 79-402 Nebraska School Laws. May 22, 1953.</i>

# 13 Kempton

Willie Wickbeup

Teacher	Enrollment	Salary	Length of School	
1915 Hazel Mjke	10	\$ 50.	7 months	140 days
1916 Vera A. Thomas	12	\$ 45	7 months	140 days
1917 Ella Gards	13	\$ 60.	8 months	160 days
1918 Marie Mjdent	15	\$ 60.	8 months	160 days
1919 Alta Bates	15	\$ 65.	7 months	130 days
1920 Sarah L. Baisinger	25	\$ 70.	8 months	159 days
1921 Sarah L. Baisinger	25	\$ 75.	8 months	159 days
1922 Sarah L. Baisinger	30	\$ 100.	8 months	180 days
1923 Cornelia	18	\$ 100.	8 months	157 days
1924 ?				
1925 Mary Weisman	21	\$ 85.	eight	160 days
1926 ?				
1927 Helen L. Cox	20	\$ 90.	nine	176 days
1928 Maurine K. Howell	18	\$ 80.	nine	178 days
1929 Lois J. Dyer	14	\$ 75.	nine	176 days
1930 Mrs. Ben Houlder	11	\$ 100.	nine	175 days
1931 Alvina Hilda	15	\$ 85	nine	176 1/2 days
1932 Elsie Salisbury	11	\$ 70.	nine	174 1/2 days



#14

DETENBECK  
(FAIRFIELD)

Legal Description of School  
NE 1/4 SE 1/4 24-6-22

1883-SE Corner of NE 1/4 of Section 24 Township 6 Range 22 of  
Turkey Creek

1883-Sod Schoolhouse 16x21 ft. built within two days-known as  
the Highland School from Arapahoe Pioneer

1911-Ella Ramels-teacher



July 20, 1883

District # 14

Sod School 16 x 21 feet

built within 2 days

Known as the Highland

School in

from Arapahoe  
Pioneer



Description of School Districts in *Gosper* County, as shown by Map No. *Made*  
*Jan 13 1896*

STATE JOURNAL CO. Blank Book Makers, Stationers and Printers, Lincoln, Neb.

No. of District	Date of Formation			DESCRIPTION—PARTS OF SECTIONS	SECTIONS	TOWN	RANGE	REMARKS
	Year	Month	Day					

14 - *Waternook*

*all*

*all*

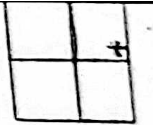
13		
24		
25	6	22
17		
18		
19		
20		
29		
30	6	21

1966 July 7

Discontinued by petition of 100% of legal voters,  
 Section 79-402, Nebraska School Laws and  
 attached to District No. 63 Gosper + 54 Phelps Counties.

#14

SE corner of NE $\frac{1}{4}$  of Section 24 township 6 Range 22





#15

GOSPER SCHOOL

Legal Description of School  
SW 1/4 SW1/4 22-6-23

Location-East Muddy

1892-School started

1900-this schoolhouse set east and west-most schoolhouses  
sat north and south

1953-School closed

Lois Meyerle last teacher

This picture with cars was an Old Settlers Picnic in August









# Schoolhouses AT AUCTION

Due to consolidation of School Districts, the following will be sold at auction, starting at 1:00 o'clock on

## Saturday, Jan. 9

### NUMBER ONE

Ash Grove Schoolhouse, formerly District No. 38 located 10 miles southwest of Elwood on Highway 23S. This building is 20 x 30 feet with a 6 x 8 ft. annex; good 10 x 14 ft. coal shed; two toilets; books and desks. One Acre of Land.

### NUMBER TWO

Known as Gosper Schoolhouse, formerly Dist. No. 15, located 9 miles south and 3 miles west of Elwood. The school building is 20 x 30 feet with a 6 x 8 ft. annex. Also coal shed 8x12; books and desks; piano and organ. One and one-half Acres of Land.

District 16 — Coal house 8x10; 3-sided room 8x12; 2 toilets and One-half Acre of Land.

In all instances land will be conveyed to purchasers by Quit Claim Deed.

## School District 24R

GEORGE RENO, Auctioneer



Description of School Districts in *Gosper* County, as shown by Map No. *Made Jan 13 / 1896*

No. of District	Date of Formation			DESCRIPTION—PARTS OF SECTIONS	SECTIONS	TOWN	RANGE	REMARKS
	Year	Month	Day					
15				<i>Gosper</i>	<i>all</i>			
					21			
					22			
					27			
					28			
					33			
					34			
				<i>SW 4</i>	23			
				<i>NW 4</i>	24	6	23	
				<i>SW 4</i>	23			
				<i>NW 4</i>	26	6	23	<i>Detached by petition March 29 1902.</i>
								<i>Discontinued by petition of more than 55% of legal voters and new district no. 24R was formed from districts no. 15, 16 + 38. according to Sec. 79-402 Nebraska School Laws. May 25, 1953.</i>



Description of School Districts in *Gosper* County, as shown by Map No. *Made*  
*Jan 13/1896*

STATE JOURNAL CO., Blank Book Makers, Stationers and Printers, Lincoln, Neb.

No. of District	Date of Formation			DESCRIPTION—PARTS OF SECTIONS	SECTIONS	TOWN	RANGE	REMARKS
	Year	Month	Day					
16				<i>Schwendtger</i>	<i>All</i>			
					19 20 29 30 31 32	6	23	Discontinued by petition of more than 50% of legal voters and new district no. 248 was formed from districts no. 15, 16 and 38 according to section 74-402 Nebraska School Laws. May 25, 1953.

**DISTRICT 17A**

Gosper County District 17A was consolidated, with Holbrook Public Schools and the school house was deeded to the Busy Beaver 4-H Club and became the club house in January of 1958. The school house was moved to the southeast corner of S½, SE ¼ of Section 11, T5N, R24, West Muddy Precinct.

Gosper County Supt. Rosemary Stagemeyer &

The Elwood Bulletin--August 7, 1986





Description of School Districts in *Gosper* County, as shown by Map No. Made Jan 13 1894

. of trict	Date of Formation			DESCRIPTION—PARTS OF SECTIONS	SECTIONS	TOWN	RANGE	REMARKS
	Year	Month	Day					
17	B. M.	Allen		All	13 14 15 22 23 24			
				NW 4	27	5	24	
1949	June	20	Boundary was changed by petition and is now as given below:					
			All	1 2 11 12 13 14 15 22 23 24				Area from Dist. #4, Sec. 12, 11, 12 Town 5 Range 24 attached by petition.
			NW 4	27	5	24		
1955	May	31	Boundary was changed and is now as given below:					
								Area attached from

1955 May 31 Boundary was changed and is now as given below:

All	1		
	2		
	11		
	12		
	13		
	14		
	15		
	22		
	23		
	24		
	25		
	26		
	35		
	36		
E <sup>2</sup> + NW <sup>4</sup>	27		
E <sup>2</sup>	34	5-	24

Area attached from District No. 57 according to Section 79-420, Nebraska School Laws, 1953-1954.

1956 July 1. Boundary was changed by Freeholders Petition and is now as given below:

All	1		
	2		
	11		
	12		
	13		
	14		
N <sup>2</sup> + SE <sup>1</sup> / <sub>4</sub>	15		
	22		
	23		
	24		
	25		
	26		
	35		
	36		

Area set off from Dist. 17 + attached to Dist. 183 Furnas + R. Gasper according to Section 79-403, Nebr. School Laws 1955-1956.



10  
22  
23  
24  
25  
26  
35  
36  
27  
34

E<sup>2</sup> + NW<sup>4</sup>  
E<sup>2</sup>

5- 24

1956 July

1. Boundary was changed by Freeholders Petition and is now as given below;

All

1  
2  
11  
12  
13  
14  
15  
22  
23  
24  
25  
26  
35  
36  
27  
34

N<sup>2</sup> + SE<sup>1</sup>/<sub>4</sub>

E<sup>2</sup> + NW<sup>4</sup>  
E<sup>2</sup>

5- 24

Area set off from  
Dist. 17 + attached to  
Dist. 103 Furnas + R. Co. as per  
according to Section  
79-403, Nebr. School laws  
1955-1956.

1957 July

1. Above description merged, attached and annexed to School District # 103 Furnas. Co. July 1, 1957, according to Section 79-402, Nebr. school laws.

17A SCHOOL

1949

BACK ROW:

Mrs. Garnet Skinner (Teacher), Richard Noltensmeier, Charles Chambers, Dorothy Chambers, Irlee Stagemeyer, Clarence Noltensmeier,

SECOND ROW:

Marlene Stagemeyer, Connie Rodenbeck, Howard Chambers, Alice Noltensmeier, Lorene Chambers

FRONT ROW:

Wayne Noltensmeier, Keith Haussler and Keith Rodenbeck



School Picture



17 A

STAGEMEYER SCHOOL

1952-Halloween

Teacher-Twyla Huxoll  
Keith Rodenbeck  
Connie Rodenbeck  
Willard Stillman  
Keith Haussler



# Certificate of County Superintendent to County Treasurer Respecting Change of District Boundaries.

(SEC. 17, SUBD. 1.)

Office of County Superintendent.

Gosper County, Nebraska.

To the County Treasurer of Gosper County:

I hereby certify that the following changes in the boundary lines of school district No. 4 & 17 have been made by me, and the map of the School districts of

Gosper County has been changed to correspond therewith, to wit:

That District No. 4 be discontinued and the boundary line between sections 11 and 12 and 13 and 14 of Districts 4 and 17 be removed and that all of sections 1, 2, 11 and 12 in District No. 4 be attached to District No. 17 of Gosper County, Nebraska.

The following changes in the tax list will be necessary:

Charlie A. & Bertha Briemel	E $\frac{1}{2}$ -NE 1-5-24	W $\frac{1}{2}$ -NE; SE 1-5-24
Lester Dwinell	NW $\frac{1}{4}$ 1-5-24; N $\frac{1}{2}$ -SE 11-5-24; W $\frac{1}{2}$ -SW 12-5-24	
Leo Tull	SW $\frac{1}{4}$ 1-5-24	
Leland D. Rogers	NE $\frac{1}{4}$ 2-5-24	
August H. Stagemeier	NW $\frac{1}{4}$ -W $\frac{1}{2}$ -SW 2-5-24	
James O. & Verl Rogers	E $\frac{1}{2}$ -SW; SE $\frac{1}{4}$ 2-5-24	

Done at the Office of the County Superintendent on the "Over" 20 day of

June 1919

*Doris E. Bigelow*  
County Superintendent.



# Certificate of County Superintendent to County Clerk Respecting Change of District Boundaries.

OFFICE OF THE COUNTY SUPERINTENDENT,

Gosper County, Nebraska.

To the County Clerk of Gosper County:

I hereby certify that the following changes in the boundary lines of School District No. 4 & 17 of Gosper County have been made by me, and the map of the School District has been changed to correspond therewith, to-wit:

That District No. 4 be discontinued and the boundary line between Sections 11 and 12 and 13 and 14 of Districts 4 and 17 be removed and that all of Sections 1, 2, 11 and 12 in District No. 4 be attached to District No. 17 of Gosper County, Nebraska.

The proportion of bonded indebtedness of the new District will become due in installments as follows:

Done at the Office of the County Superintendent on the 20 day of

June 1891 1949

Doris E. Bigelow  
County Superintendent.

ORDER OF COUNTY SUPERINTENDENT OF GOSPER  
COUNTY, NEBRASKA.

WHEREAS, a petition has heretofore been filed in this office signed by two thirds of all the legal voters of School District No. 4 and School District No. 17 requesting the consolidation of such districts into a new School District to be known as School District No. 17 of Gosper County, Nebraska, sworn statements showing the names and addresses of all of the legal voters of such districts having also been filed herein, legal notice of the filing of such petition having been given according to law,

NOW, THEREFORE, I, Doris E. Bigelow, County Superintendent of Gosper County, Nebraska, by authority of the laws of the state of Nebraska and the powers vested in me by such laws do hereby declare such School Districts No. 4 and School District No. 17 of Gosper County, Nebraska, consolidated and joined in a new School District to be known as School District No. 17 of Gosper County, Nebraska.

WITNESS my hand this 20th day of June, 1949.

*Doris E. Bigelow.*  
\_\_\_\_\_  
County Superintendent of Gosper  
County, Nebraska.



#18

LONE TREE SCHOOL

Legal Description of School  
SE 1/4 NE 1/4 19-5-22

Union

Teacher-Emma Van Druff



Description of School Districts in *Gosper* County, as shown by Map No. *Made*

*Jan 13, 1876*

STATE JOURNAL CO., Blank Book Makers, Stationers and Printers, Lincoln, Neb.

No. of District	Date of Formation			DESCRIPTION—PARTS OF SECTIONS	SECTIONS	TOWN	RANGE	REMARKS
	Year	Month	Day					
18— <i>Long Tree</i>				<i>E<sup>2</sup></i>	13	5	23	
				<i>E<sup>2</sup></i>	24			
				<i>all</i>	17			
					18			
					19			
					20			
					29			
					30			
					16			
					21			
	28	5	22					
1956	March	31	NW <sup>4</sup> NE <sup>4</sup> Sec. 24 Town 5 Range 23 detached by petition of 55% of legal voters + attached to Dist. No. 6.					
1956	April	2	Boundaries changed and are now as given below:					
			<i>E<sup>2</sup></i>	13	5	23	Area attached from District No. 12 in accordance with Sec. 79-420, Nebraska School Laws. 19	
			<i>SE<sup>4</sup> + S<sup>2</sup>NE<sup>4</sup> + NE<sup>4</sup>NE<sup>4</sup></i>	24				
			<i>all</i>	4				
				7				
				8				
				9				
				17				
				18				
				19				
				20				



# 18

Hulbert Wendland Violet Helms  
Bertha Behring 3 child  
Paul Behring Hulbert Vernon Larson  
Dumetson  
Length of School

Teacher	Enrollment	Salary	Length of School	Days
1915 Leah Stevens	25	\$50.	8 months	160 days
1916 Leah Stevens	24	\$50.	8 months	160 days
1917 Essie Kimmel	18	\$50.	8 months	159 days
1918 Gull Oyer	24	\$50.	8 months	160 days
1919 ?				
1920 Bernice Stevens	19	\$75.	8 months	159 days
1921 Bernice Stevens	19	\$90.	8 months	159 days
1922 Ethel Scott	18	\$90.	9 months	180 days
1923 Ethel Scott	9	\$80.	9 months	177 days
1924 Florence Prudden	10	\$75.	9 months	174 days
1925 Helena Warner	5	\$75.	9 months	171 days
1926 Emma Lord Peterson	4	\$70.	9 months	180 days
1927 ?				
1928 Hilda Pieper	3	\$70.	8 months	160 days
1929 Hilda Pieper	4	\$75.	8 months	159 days
1930 Eva Richardson	6	\$70.	9 months	174 days
1931 ?				
1932 Mrs. Eva Richardson Breinig	5	\$70.	9 months	174 days



#19

REMBERG SCHOOL  
(FOX)

Legal Description of School  
NW 1/4 SW 1/4 25-7-21





# 19

Fitzmann  
Dawson

Teacher	Enrollment	Salary	Length of School
1915 - Lois M. Johnson	17	\$ 50.	8 months 158 days
1916 Elizabeth C. M. Murphy	18	150.	8 months 157 1/2 days
1917 W. D. Atkinson	18	\$ 60.	8 months 160 days
1918 W. D. Atkinson	17	\$ 62.50	8 months 157 days
1919 Lois M. Johnson	23	\$ 70.	8 months 156 days
1920 Mahel Gibson	14	\$ 80.	8 months 148 days
1921 Iona Murphy	16	\$ 90.	8 months 154 days
1922 Iona Murphy	9	\$ 95.	8 months 160 days
1923 Bertha Comier	8	\$ 95.	9 months 155 days
1924 Mildred Westfall	8	\$ 75.	8 months 160 days
1925 ?			
1926 Lorne Anderson	9	\$ 85.	8 months 145 days
1927 Lorne Anderson	11	\$ 90.	8 months 154 days
1928 Elsie High	10	\$ 85.	8 months 153 days
1929 Elsie High	9	\$ 85.	8 months 150 1/2 days
1930 ?			
1931 ?			
1932 <del>C. Eleanor</del> <sup>C. Eleanor</sup> Barnes	8	\$ 85.	8 months 154 days

# Description of School Districts in *Gosper* County,

as shown by Map No. *Made*  
*Jan 13, 1896*

No. of District	Date of Formation			DESCRIPTION—PARTS OF SECTIONS	SECTIONS	TOWN	RANGE	REMARKS
	Year	Month	Day					
19				<i>John Fox</i>	<i>All</i>			
					23			
					<del>24</del>			
					25			
					26			
					35			
					36	7	21	
				<i>NE 1/4 Sec 24 Town 7 Range 21  transferred to dist #1069 Phelps Co  Jan 16, 1897</i>				
				<i>W 2 + SE 4</i>	24	7	21	
	1956	July	1	<i>Discontinued by petition of 55% of legal voters, Section 79-402  Nebraska School Laws, and attached to #63 Gosper County + #54 Phelps County.</i>				



#20

TRACYVILLE SCHOOL

Legal Description of School  
NW 1/4 SE 1/4 28-7-21

1880-Location of school three miles east and two miles south of Smithfield, 1st school located on NW corner of SW 1/4 Section 27

Sod schoolhouse 14x28 ft

School held for three months-teacher W F Black for \$20.00 a month





Description of School Districts in *Gosper* County, as shown by Map No. *Me*  
*Jan 13 1894.*

STATE JOURNAL CO., Blank Book Makers, Stationers and Printers, Lincoln, Neb.

No. of District	Date of Formation			DESCRIPTION—PARTS OF SECTIONS	SECTIONS	TOWN	RANGE	REMARKS
	Year	Month	Day					
20				<i>Troyville</i>	<i>All</i>			
					21 22 27 28 33 34	7	21	
					16 19 4 5 8			Attached by pet Jan. 7 190
					E $\frac{1}{2}$ 17	7	21	
1956	July	1		Discontinued by petition of 55% of legal voters, Section 79-402 Nebraska School Laws, and attached to Dist. No. 63 Gosper and 54 Phelps Counties				



1885-Special meeting issued \$500. to built new school on SE corner of Section 28, Township 7, size 22x26x10 with six windows

1886-Hired Mr. Gray and Little to built school, paid \$2.50 a day for ten hours.

1895-Nine months of school and to pay not more than \$35. month for a teacher

1896-Built a ante room and cyclone cellar

1956-Last school year and students transferring to Bertrand

# TRACYVILLE

## ONE OF THE FIRST

Otis Tracy was one of the earliest settlers to migrate to this vicinity. The settlement he founded was named Tracyville. It was located approximately three miles east and two miles south of Smithfield, Nebr. This settlement had a store, a post office, and one of the first school houses in the area. This neighborhood became quite a center of activity. Some of the other families who gathered in this area were the Selbys, Wellons, Greenlee, Cramer, Wandling, Campbell, Curtice, Colerick, Glenn, Stump and Westfall families.

The location of the school did not change until it was sold. At this time the district became part of the reorganized District 54. This school had as many as fifty students at some periods in time. The enrollment especially increased in the winter, when the work slacked off, and the big boys came to school.

This area also saw the organization of the Bertrand Methodist Church. Sunday school was held in the school house. A choir was organized in the district by a man named Johnson, who held the class together one whole winter with meetings once a week. The choir put on a fulfilled program of music in the spring. The free program was interesting and well worth attending.

Another function which was common at this time was the literary society. It also was held at the school house during the winter months. People came from miles around. They journeyed from Smithfield, Bertrand, and as far away as Turkey Creek, to enjoy these programs. Some of the outstanding debaters of the day were Wilson Winslow, C. M. Selby, George Bolen, George Bennett, and L. E. Brown, the former editor of the Bertrand Herald.

Often a program consisted of recitations, songs, a brief recess, and then the debate.

In February of 1888, another interesting literary was held at the Tracyville school. The question debated was "Resolved that the Sunday laws are unjust and unconstitutional and should be abolished." The main attraction was Wilson Winslow and George Webster on opposing sides of the debate.

## THE BEGINNING OF TRACYVILLE SCHOOL #20

In 1880 a special meeting was held to consider ways and means to raise money to build a new school house. A sod school, built by donated labor, was to be built on the N-W corner of the S-W one-fourth section 27, providing the board could succeed in obtaining a lease. The size would be 14x28 feet inside.

In April of 1881, it was voted the mills be set and used for the building fund, teacher wages, furniture, fuel, repairs, and supplies.

They voted to hold three months of school and hire a male teacher. W. F. Black was hired at \$20.00 a month.

The first school board members were: Moderator, Wm. Colerick; Treasurer, P.H. Wellons; Director, D. S. Hickman.

In 1880, R. V. King was the county superintendent, S. B. Yeoman became superintendent in 1883 followed by F. Montgomery. Doris (Bigelow) Smith was the last superintendent.

In 1882 it was voted on to charge non-resident pupils to pay \$1.40 per month, but then was decided to only charge \$.50.

The Methodist Episcopal Church of Smithfield was formed as a class on July 16, 1882 in the Tracyville School which was then located two miles east and one and a half miles south which is Smithfield.

Some early settlers had brought their church letters with them for they expected to make permanent homes here. These nine people were Jane Curtice, Wm. A. Colerick, D. M. Colerick, F. M. Farmer, Sophia Farmer, Issaac Dowler, Adaline Dowler, W. A. Floyd, and Sarah Floyd. These people became the first class.

A vote was taken in 1884 to have three months spring school and three months of fall school. The motion carried.

In 1885 a special meeting was held to vote on the question of relocating the school house on the N-E corner of the S.E. corner of section 28, township 7. They issued \$500.00 dollar bonds for the frame school house which had the dimensions 22x26x10 feet and had six windows.

In 1886, it was voted to have seven months of school. Heckman, A. M. Westfall, and Whiteaker was to hire a Mr. Gray and Little to build the school house and agreed to pay \$2.50 per day for ten hours of work a day.

In 1887, it was voted to build a board fence, posts being six feet apart by the school.

In 1895, it was voted to have nine months of school and not pay more than \$35.00 per month and in 1896 to build an ante room over the door eight feet wide and twelve feet long. A cyclone cellar cave to be built in the future was to be 8x14 feet.

These are the early meeting of the School District 20, Gosper County, Smithfield, Nebraska.

1956 was the last school year for Tracyville School with the pupils then transferring to Bertrand, Nebraska. After the school was closed, the buildings were all auctioned off.

Due to the possibility of errors, no representation is made to the complete accuracy.



## Families of Dist. #20

Westfalls  
Coys  
Stevens  
Dyers  
Cramers  
Stehls  
Robb  
Stubbendieck  
Karstens  
Schroeders  
Fish  
Sandys  
Bowers  
Claytons  
Selbys  
Moores  
Moffits  
Ross

Winters  
Wilkins  
Bevelhimers  
Halliers  
Berntson  
Wilson  
Suhrs  
Renken  
Talolajews  
Dannehls  
Dinkeys  
Atkinsons  
Bellamys  
Heaffner  
Andersons  
Farmers  
Bolens  
Mills

Padgetts  
McCormick  
Olsons  
Reich  
Butler  
Glenn  
Meyers  
Taylor  
Jones  
Swartz  
Little  
Tracy  
Neumans  
Krouse  
Newells  
Kahres  
Gengenbachs  
Bredenkamp

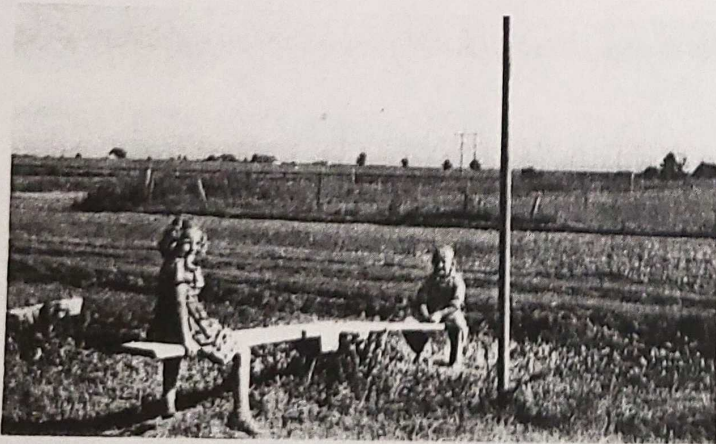
Hocks  
Detenbecks  
Wellons  
Elliott  
Nelsons  
Casper  
Colerick  
Wandling  
Crawford  
Vandersdall  
Pool  
Langenberg  
Bone  
Rohrbaker  
Kinyon  
Stump



*Martin Myer and Reuben Stehl on the way to school.*



*Marilyn Hock, teacher, Carolyn Bredenkamp, Lloyd Stehl and Ronnie Hock*



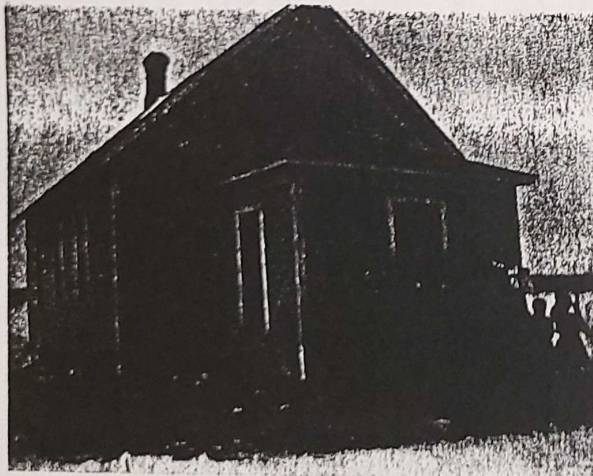
*Carolyn and Lloyd at recess.*



# Teachers of Tracyville

W. F. Black	March 25, 1881 (First Teacher)
Dora Carpenter	1882-1883
Jennie Hill	1883-1884
Mrs. H. S. Filkins	1884-1885 (6 months)
F. M. Farmer	1884-1885 (3 months)
Anna Taylor	1885-1886 (3 months)
F. M. Farmer	1886-1887
Elta Dye	1887-1888
Agnes Heird	1888-1889
Jennie M. Shiring	1888-1889 (3 months)
Venia Carter	1889-1890
Emma Ostrom-Anna Turner	1889-1890
Miss B. A. Robb	1890-1891
Kate Barney	1891-1892
Cora J. Johnson	1892-1893
Cora J. Johnson (2 months)	1893-1894 (Mrs. E. Ostrom, 1 month)
Mary A. Little	1894-1895
Mrs. E. Ostrom	1895-1896
Miss Ora Little	1896-1897
Fannie Westfall-Alla Greenman	1897-1898
Miss Lova Child	1897-1898
Maude Kellogg	1898-1899
Maude Currier	1899-1900
Lois M. Johnson	1900-1901
Fannie Westfall	1901-1902
Emma Swan	1902-1903
Lois M. Johnson	1903-1904 Lois M. Sanson
Goldie Washburn	1904-1905
Eva M. Burt	1905-1906
Mrs. William Gorman	1906-1907
Goldie Washburn	1907-1908
Lula Ford-W. D. Atkinson	1909-1909
W. D. Atkinson	1909-1913
Fern M. Johnson	1913-1917
Edith M. Stine	1917-1919
Olive Major	1919-1922
Verna Nelson	1922-1924
Goldie Anderson	1924-1925
no name	1925-1926

Lydia Awo	1926-1927
no name	1927-1928
Edna Nelson	1928-1929
	1929-1930
Elsie Sutherland	1930-1931
Muriel Cramer	1931-1932
Verna Bell	1932-1934
Verna Weimer	1934-1935
Anita Murray	1935-1936
Agness Foss	1936-1937
	1937-1938
Martha Ihfe	1938-1939
Martha Peterson	1939-1940
	1940-1941
Marie Ferry Clayton	1941-1942
Ruth Fastenau	1942-1943
Floy E. Westfall	1943-1944
Ellen Dannehl	1944-1945
Nora Reissener	1945-1946
Merna J. Koch	1946-1947
Shirly Clayton	1947-1949
Shirly Clayton Ebmier	1949-1950
Lois Hanthorn	1950-1951
Nora Reissener	1951-1952
Marilyn Hock	1952-1954
Mrs. Velma Brown	1954-1955
Myrtle Smith	1955-1956



Tracyville School 1907, Bernice Coy, Forrest Coy, Clarence Coy, Owen Westfall, Willie Fish, Muriel Cramer, Edna Cramer, Bertha Fish, Loova Berntson, Melvin Berntson, Frances Dyer, Edna Dyer, Leah Stevens, Madge Stevens, Gladys Stevens and Tressie



School Dinner 1913, Walter Cramers, Ed Dyers, Chas. Bowers, Stubbendiecks, Coys and Stehls.



Christmas program crowd, 1945.



Harrison, School District No. 20, opened for classes in the Fall of 1879. The desks were constructed of logs hewn from the trees which surrounded the area. Frank Black served as the first teacher.

A new frame school house was erected in the Calhoun District in 1896. Classes were under the supervision of Miss Lella Pedley and lasted for a six month term.

Harrison, School District No. 20, opened for classes in the Fall of 1879. The desks were constructed of logs hewn from the trees which surrounded the area. Frank Black served as the first teacher.

A new frame school house was erected in the Calhoun District in 1896. Classes were under the supervision of Miss Lella Pedley and lasted for a six month term.

From: Gosper County Supt. Rosemary Stagemeyer &

The Elwood Bulletin--August 7, 1986



#21

BRACE SCHOOL

Legal Description of School  
SE 1/4 SE 1/4 36-5-23  
(Joint w/Furnas





#22

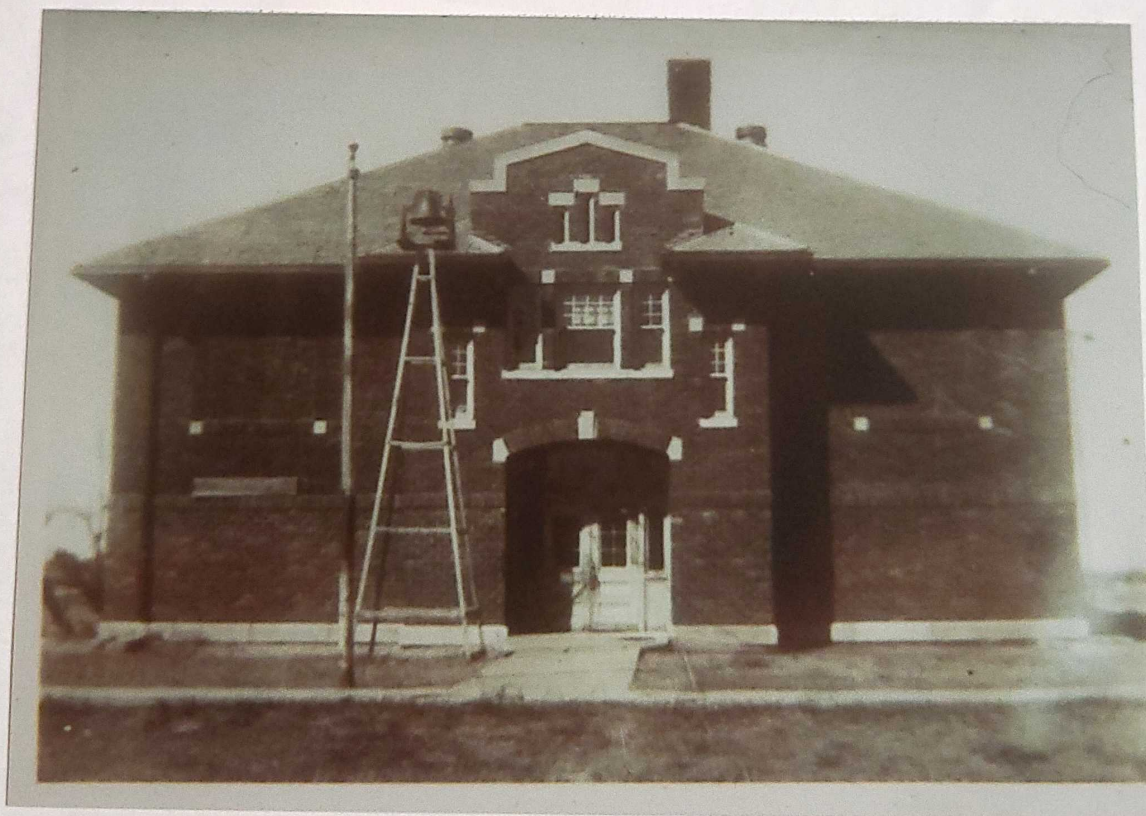
SMITHFIELD SCHOOL  
Smithfield Village

1884-Was organized for a three month term with Altha Gore of the Four Corner as teacher

Sod schoolhouse with a north and south window and benches built around the walls served the schoolhouse

1949-The last classes for high school at Smithfield  
Marie Mitchem and Nellie Thayer as instructors

1966-Elementary classes held until 1966. Harriet Yost and Delores Stoll serving as the last instructors.





## **SMITHFIELD**

The original Smithfield school was moved from a tree claim in the country with C.A. Yeoman of Elwood as teacher. When school opened there were so many pupils and different grade levels that the beginners were sent home at the close of the morning session.

After three years, Miss Cora Johnson was hired to teach the lower grades and Mr. Biederstadt taught the higher grades.

The last classes for high school students at Smithfield were held in 1949 with Marie Mitchem and Nellie Thayer serving as instructors. Elementary classes were held until 1966 with Harriet Yost and Delores Stoll of Elwood serving as the last teachers for the school.

# #122 Smithfield

Teacher	Enrollment	Salary	Langley School
1915 - L. M. Langley	66	\$630. 470.	9 months 174 days
Fay Baker		\$495. 455.	9 months 174 days
Effie Major		\$495. \$55.	9 months 174 days
Orna B. West		\$495 \$55	9 months 174 days
1916 -			
1917 David L. McClure (90)		\$75.	9 months 178 days
Fay McEwen		\$65.	9 months 177 days
Effie Major		\$65.	9 months 178 days
Lillian Mitchell		\$65.	2 1/2 months 50 days
Clifford G. Selby, Supt.			
1918 Clifford G. Selby Supt		\$675.	178 days 9 months
Lillian Mitchell		\$385. <sup>0</sup>	178 days "
Effie Major		\$585. <del>385.</del>	178 days "
Betty Shoster		\$585.	178 days "
1921 Carolyn M. Eggleston		\$144.44	9 months 167 days
Lucy Davidson		\$120.	9 months 167 days
Irma Bacon		\$100.	9 months 167 days
Vera Mitchell	94	\$100.	9 months 167 days
1922 Mabelle Namer	90	\$113.50	9 months 180 days
1923. Mabelle Namer	85	\$102.	9 months 180 days
1924 -			
1925 Mary Donigan	114	\$135.	9 months 180 days
1926 Gladys Wilson	87	\$101.25	9 months 179 1/2
1927 Nov. Hanson	23	?	9 months 176 days
1927 Elizabeth McKee	17	110. <sup>00</sup>	9 months 176 days
Elizabeth McKee			9 months 180 days
Lillie Anderson			9 months 180 days
Gurnie Long			9 months 180 days
1927 D. M. McClure	26	?	9 months 176 days



Description of School Districts in *Gosper* County, as shown by Map No. *Made*  
*Jan 13 / 1896*

No. of District	Date of Formation			DESCRIPTION—PARTS OF SECTIONS	SECTIONS	TOWN	RANGE	REMARKS
	Year	Month	Day					
22				<i>Smithfield</i>	<i>all</i>			
					<i>18</i>			
					<i>6</i>			
					<i>7</i>			
				<i>W<sup>2</sup></i>	<i>17</i>			
				<i>N<sup>2</sup></i>	<i>20</i>	<i>7</i>	<i>21</i>	
				<i>all</i>	<i>1</i>			
					<i>12</i>			
					<i>13</i>			
				<i>NE<sup>4</sup></i>	<i>24</i>	<i>7</i>	<i>22</i>	
	<i>1907</i>	<i>4</i>	<i>2</i>	<i>all</i>	<i>6</i>			
					<i>7</i>			
					<i>8</i>			
					<i>17</i>			
				<i>north half</i>	<i>18</i>			
				<i>all</i>	<i>20</i>	<i>7</i>	<i>21</i>	
					<i>1</i>			
					<i>12</i>			
				<i>north last quarter</i>	<i>13</i>			
					<i>24</i>	<i>7</i>	<i>22</i>	
	<i>1925</i>	<i>10</i>	<i>5</i>	<i>all of</i>	<i>19</i>			
					<i>29</i>			
					<i>31</i>			

*Given its present form by petition over 2/3 of the voters in the district.*

*This was added by petition of over 60% of legal voters*

1954 June 28

all of 67

30

" "

area - most 2d

all

19  
20  
21  
29  
30  
31  
32  
33

Area from Districts #43  
& #64 attached by  
petition of over 55% of  
legal voters according  
to Section 79-402,  
Nebraska School Laws.

N 1/2 + SW 1/4  
S 1/2  
all

28  
34

8 21

4  
5  
6  
7  
8  
9  
16  
17  
18  
19  
20  
29  
30  
31  
32

W 1/2  
all

3  
1  
12  
13

7 21

NE 1/4

24

7 22

Sho. base 10



Description of School Districts in *Logan*

County, as shown by Map No.

No. of District	Date of Formation			DESCRIPTION—PARTS OF SECTIONS <i>Continued from Page 21</i>	SECTIONS	TOWN	RANGE	REMARKS
	Year	Month	Day					
22	1955	April	15	<p>SW <math>\frac{1}{4}</math></p> <p>N <math>\frac{1}{2}</math> NW <math>\frac{1}{4}</math> + S <math>\frac{1}{2}</math> SW <math>\frac{1}{4}</math> + E <math>\frac{1}{2}</math></p> <p>all of</p> <p>N <math>\frac{1}{2}</math> + SW <math>\frac{1}{4}</math></p> <p>S <math>\frac{1}{2}</math></p> <p>all</p> <p>W <math>\frac{1}{2}</math></p> <p>all</p>	<p>19</p> <p>20</p> <p>21</p> <p>29</p> <p>30</p> <p>31</p> <p>32</p> <p>33</p> <p>28</p> <p>34</p> <p>4</p> <p>5</p> <p>6</p> <p>7</p> <p>8</p> <p>9</p> <p>16</p> <p>17</p> <p>18</p> <p>19</p> <p>20</p> <p>29</p> <p>30</p> <p>31</p> <p>32</p> <p>3</p> <p>1</p>	8	21	<p>Area changed by</p> <p>Trustee's Petition</p> <p>according to Sec. 79-403</p> <p>Nebr. School Law. (1941)</p>

$N\frac{1}{2}NW\frac{1}{4} + S\frac{1}{2}SW\frac{1}{4} + 6\frac{1}{2}$   
All

20  
21  
29  
30  
31  
32  
33

$N\frac{1}{2} + SW\frac{1}{4}$   
 $S\frac{1}{2}$   
All

28  
34  
4

8

21

5  
6  
7  
8  
9  
16  
17  
18  
19  
20  
29

$N\frac{1}{2} + W\frac{1}{2}SW\frac{1}{4}$   
All

30  
31  
32  
1

7

21

$NE\frac{1}{4}$

12  
13  
24

7

22

anon -  
According to Sec. 79-403  
Nebr. School Law.  
Emma Wilken - Roy Wilken  
Frank Fastenau:  
NW<sup>1</sup> Sec 3, T. 7, R. 21  
SE<sup>1</sup> + E<sup>2</sup>SW<sup>1</sup> Sec. 32, T. 7 R. 21  
SW<sup>1</sup> Sec. 3, T. 7, R. 21 -  
Logan Co. Nebr. to  
District 63 Logan + 54 Phelps  
County.

See Page 72



Description of School Districts in *Goose*

County, as shown by Map No.

STATE JOURNAL CO., 1900-1901 Book Makers, Stationers and Printers, Lincoln, Neb.

No. of District	Date of Formation			DESCRIPTION—PARTS OF SECTIONS <i>Continued from Page 69.</i>	SECTIONS	TOWN	RANGE	REMARKS
	Year	Month	Day					
22	1964	Feb.	25	$SW\frac{1}{4}$ $N\frac{1}{2}NW\frac{1}{4} + S\frac{1}{2}SW\frac{1}{4} + E\frac{1}{2}$ All	19 20 21 29 30 31 32 33			Area changed by Freeholder's Petition (Wm + Bernardus Kenken) according to sec. 79-402 <sup>1</sup> , Nebraska School Laws. N.E. $\frac{1}{4}$ Sec. 16, T. 7 R. 21 to School District No. 63 Goose - 54 Phelps County
				$N\frac{1}{2} + SW\frac{1}{4}$ $S\frac{1}{2}$ All	28 34 4 5 6 7 8 9	8	21	
				$NW\frac{1}{4} + S\frac{1}{2}$ All	16 17 18 19 20 29 30 31			
				$N\frac{1}{2} + W\frac{1}{2}SW\frac{1}{4}$ All	32 1 12	7	21	

#22

Commencing at the point of intersection of the north line of Niobrara Street with the East line of Nebraska Avenue in the town of Smithfield; thence running north in the continuation of the East line of Nebraska Avenue one hundred and forty feet; thence east at right angles to said east line three hundred feet; thence south in the continuation of the west line of Iowa Avenue one hundred and forty feet, to the north line of Niobrara Street; thence west in said north line three hundred feet to the place of beginning.



**DISTRICT 22**

In 1884, District 22 was organized for a three month term with Mrs. Altha Gore of the Four Corners as teacher. A new sod house with a north and south window and benches built around the walls served as the school house.

From: Gosper County Supt. Rosemary Stagemeyer &

The Elwood Bulletin--August 7, 1986

## SMITHFIELD HIGH SCHOOL GRADUATES

### Class of 1908

Walter Frederick Fish  
Walter Fish (Lionel)  
Fleeta Ruthledge  
Mabel Robb  
Ethel Coy  
Charles Leonard Frescoln  
Theo. Jane Bigelow  
Minnie Hibbs

### Class of 1913

Bernice Coy (Junkin)  
Harry Floyd  
Minnie Forster (Woodring)  
Lillian Fleetwood Hibbs (Way)  
Florence Major  
Richard Rumsey  
Esther Robb

### Class of 1914

Lillian Melosh (Lentz)  
Thersea Biesecker  
Nellie Lentz  
Lula Robb  
Myrtle Major  
Hallie Mae Franey

### Class of 1915

Ray Major  
Vernon Way  
Ina Carl Gainsforth  
Lela Naomi Rosecrans

### Class of 1916

Olive Major  
Merton Franey  
Hildred Franey  
Forrest Coy  
Ula McGraw  
Harrison Glenn  
Gladys Major

From: 1890 Smithfield Nebraska 1990

Small Town--Big Heart



**Class of 1917**

Frances Dyer  
 Esther Fish  
 Bernard Glenn  
 Murial Hill Vanderslice  
 George Lentz  
 Vernon Robb  
 George Moffitt

**Class of 1918**

Laura Rightmire  
 Edward Rutledge  
 A. Merle Frazell  
 Grace Rightmire  
 Arvilla Lentz

**Class of 1921**

Harold Frazell  
 Ruth Major  
 Lucille Rightmire

**Class of 1922**

Odessa Frazell  
 Oliver Brand

**Class of 1923**

Gladys Hanlin  
 Ernest Major  
 Ruth Melosh  
 Mabel Frazell

No graduates in 1924 changed  
 from 11 to 12 grade school.

**Class of 1925**

Roger Rightmire  
 Netta Walcott (Rightmire)  
 Mabel Schwarz (Maaske)  
 Verna Coy (Eckland)  
 Eva Frazell  
 Eva Ewen  
 Margaret Glenn

**Class of 1926**

Doris Bigelow (Smith)  
 Lois Bigelow (Carter)  
 Helen Rightmire

**Class of 1927**

Wallace Lentz  
 Ethel Scheel (Schmidt)  
 Norma Tyler

**Class of 1928**

Olive Frazell  
 Glen Gulden  
 Marian Rightmire  
 Wilmetta Hyslop

**Class of 1929**

Velva Brand  
 Francis Hanson  
 Leo Glenn  
 Walter Naumann  
 James Vincent Glenn  
 Helen Shields

**Class of 1930**

Fred Holthus

**Class of 1931**

Verda Holthus (Harvey)  
 Elmer L. Moore  
 Hylda Naumann  
 Eldred Junkin  
 Harvey Scheel  
 Pauline Sutlief (Gulden  
 Bosserman)  
 Harold F. Bigelow  
 Howard L. Bigelow  
 Beth Knutter

**Class of 1932**

Esther Brand (Hall)  
 Lloyd Richardson  
 Naomi Brand

**Class of 1933**

Marie Dodson

**Class of 1934**

Winona Junkin (Godert)  
 Clifford Dodson  
 Evelyn Ek (Lowery)  
 Karl VanDerslice  
 Elfrieda Naumann

**Class of 1935**

Dorothy Curtice  
 Don Schroeder  
 Le Roy Byers  
 John Austin Gleen  
 Pearl Dodson  
 Dean Junkin  
 Willis Mahlin  
 Marie Carstens  
 Elaine Biesecker  
 Marie Melosh (Bigelow)  
 Ethel Brand (Ebmeier)  
 Wilma Cross  
 Maynard Ek

**Class of 1936**

Marie Frazell  
 Eileen Biesecker  
 Dorothy Coy  
 Lawrence Hanson  
 Virgil Brand  
 Louise Naumann  
 Alma Carstens  
 Lewarn Ek

**Class of 1937**

Irene Carstens  
 Josephine Melosh  
 Erma Cross  
 Roy Brand  
 Delmar Holthus

**Class of 1938**

Delmar Brand  
 Paul Glenn  
 Doris Schroeder  
 Edith Naumann

**Class of 1939**

Mildred Biesecker  
 Neil Junkin  
 Audrey Way

Dorothy Way

Norris Holthus  
 Aileen Coy (Bredencamp)

**Class of 1940**

James Fox  
 Naomi Forster (McGee)  
 Ruth Fastenau (Franzen)  
 Marvin Brand  
 Merna Coy

**Class of 1941**

Robert Glenn  
 Elizabeth Hyslop  
 Leona Naumann

**Class of 1942**

Ruby Holscher (Esslinger,  
 Nelson)  
 Doris Holthus

**Class of 1943**

Winona Forster (Bogner)  
 Leon Brand  
 Ruth Vinzant

**Class of 1944**

Jerry Way  
 Lillian Dodson  
 Francis Fox  
 Dean Brand  
 Mary Glenn  
 Dean Hock

Robert Hyslop

**Class of 1945**

Owen Hock  
 Dale Fox  
 George Lentz  
 Fern Brand  
 Catherine Glenn

**Class of 1946**

Patricia Glenn  
 Eugene Wilken  
 Phyllis Baum

**Class of 1947**

Harlan Hock  
 Julian Kraft

**Class of 1948**

Phyllis Holthus  
 Delmar Maaske  
 Elaine Holscher (Weber)  
 Pauline Schwarz (Steinbrink)  
 Paul Schwarz

**Class of 1949**

Bill Baum  
 Eldred Maaske  
 Alfred Holscher



Smithfield Primary Room — 1908



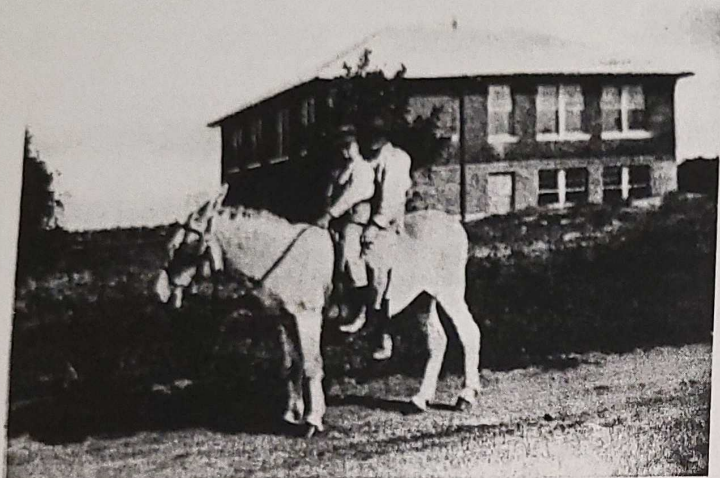
All of the Smithfield students

From: 1890 Smithfield Nebraska 1990---Small Town--Big Heart

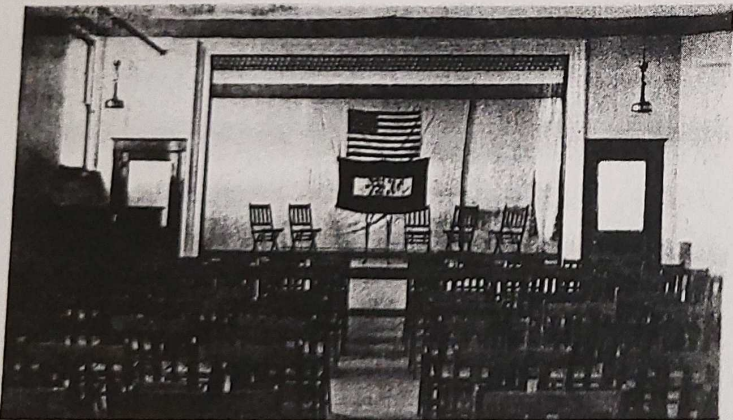




*Old and the New*



*Unknown boys by school house on Donkey*



*School auditorium*

## SMITHFIELD PUBLIC SCHOOL

SMITHFIELD, NEBRASKA

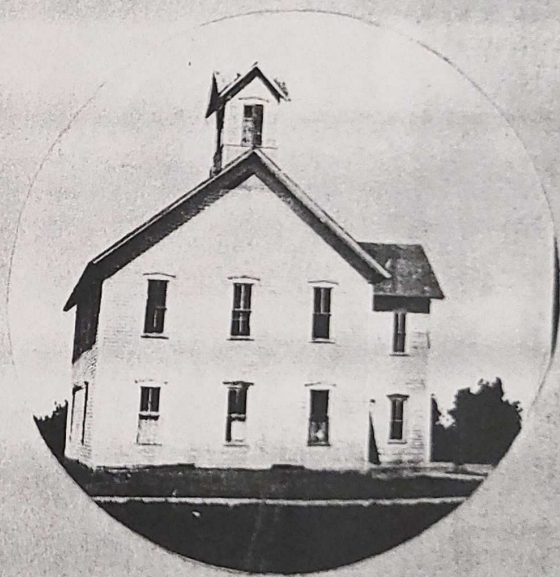
Monthly, Term and Annual Report of

*George Lentz*

*Ninth* Grade

for the School Year *1915-1916*

*L. M. Samples* Teacher.



THE EDUCATIONAL SUPPLY CO., PAINESVILLE, OHIO

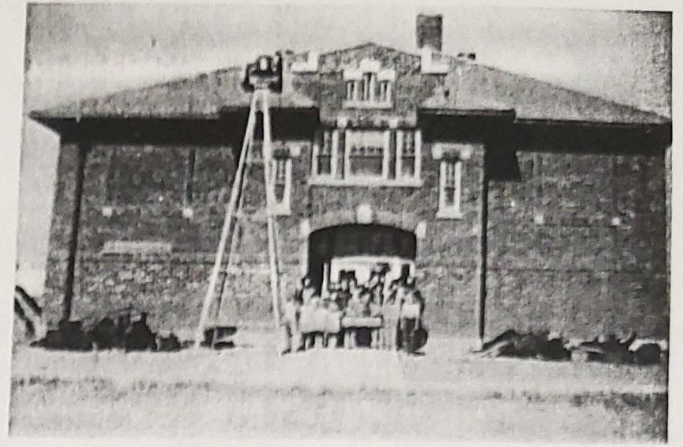
*Report card of Geo. Lentz — 1915-1916*

From: 1890 Smithfield Nebraska 1990---Small Town--Big Heart





Frank Kolb, band director for grade school. Front row, Eldred Junkin, Maynard Ek, Mark Rightmire, Justin Floyd, and John Austin Glenn. Middle row, Marie Carstens, Elfredia Naumann, Winona Junkin, Alma Carstens, Dean Junkin, Virgil Brand, Bernard Carstens, and Willis Mahlin. Back row, Harvey Scheel, ??, Howard Bigelow, and Harold Bigelow



Scrap drive during W.W.II



Lower grades



Pep Club — early 1940s



Go Smithfield Bulldogs



Roy Maaske children — 1947. They all went to Smithfield school that year. Back row, Delmar, Eldred, Bernard, and Roland. front row, Margaret, Mildred, Darrel, and Wayne

From: 1890 Smithfield Nebraska 1990---Small Town--Big Heart





*Eighth Grade Graduation — 1977. Jerrold Hibbs, Alvin Willems — teacher, Maurice Withers, Connie Dannehl, Donna Delp, and Peggy ??*



*Smithfield school float in 1940s*



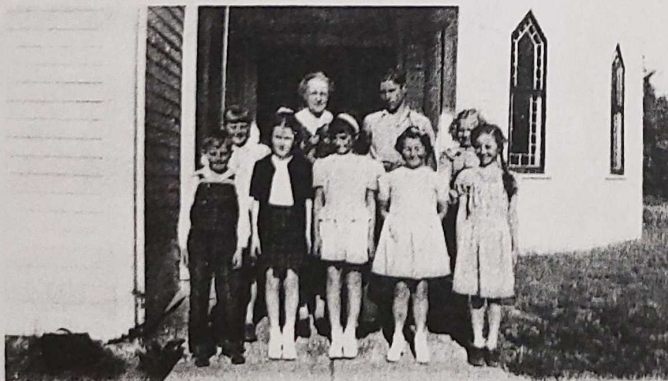
*District 24 Students: Back row left to right are Leroy Young, Dean Christensen, Wilbur Brell, Arnold Wolfe, Willa Faye Stevens, Ruth Hanson. Middle row left to right are Irvin Wolfe, Paul Hanson, Verbal Wolfe, Bernice Wolfe and Violet Christensen. Front row students are Robert Brell, Clifford Wolfe, Keith Willets, Doris Christensen and Juanita Willets*



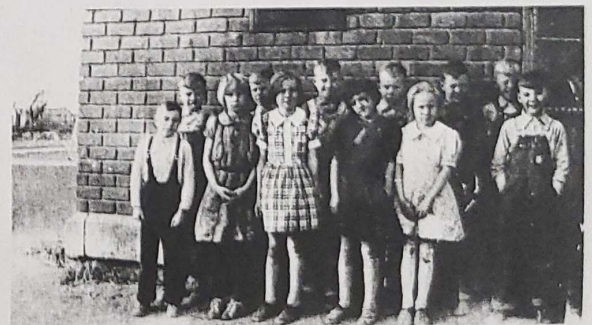
*Jolly Cannery 4-H Club. Back row, Atole Frances, Dorothy Frazell, Ruth Frazell, Alma Carstens, and Laura ??. Front row, Grace Frazell, Evelyn Ek, Winona Junkin, and Marie Carstens*



*District #64 — 1940s. Winona Junkin, teacher*

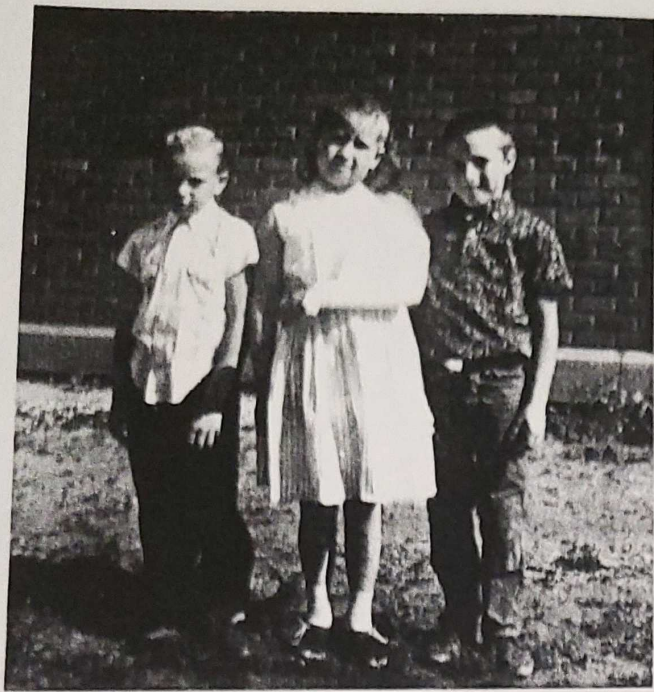


*Mrs. Ledyard's music students. L to r, Doug Fox, Barb Fox, Sharlyn Lentz, Mrs. Ledyard, ??, Russell Harop, Myrna Hibbs, Jean Fox, and Elizabeth Glenn*



*Smithfield students, far right Leroy Wilken*





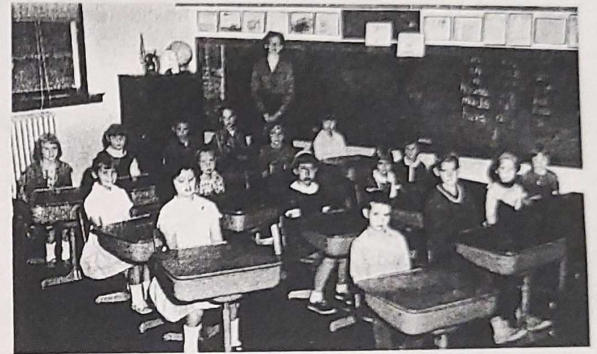
??, Monie Snider, and Mike Stuehm



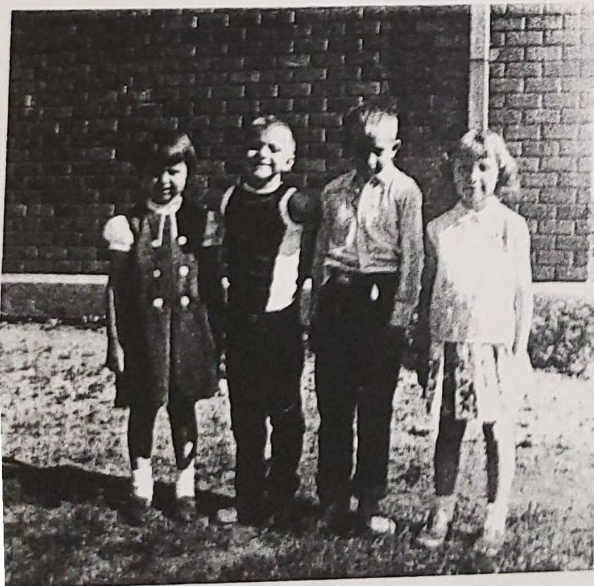
?? Simmons, Eugene Wissmann, and Lori Frazen



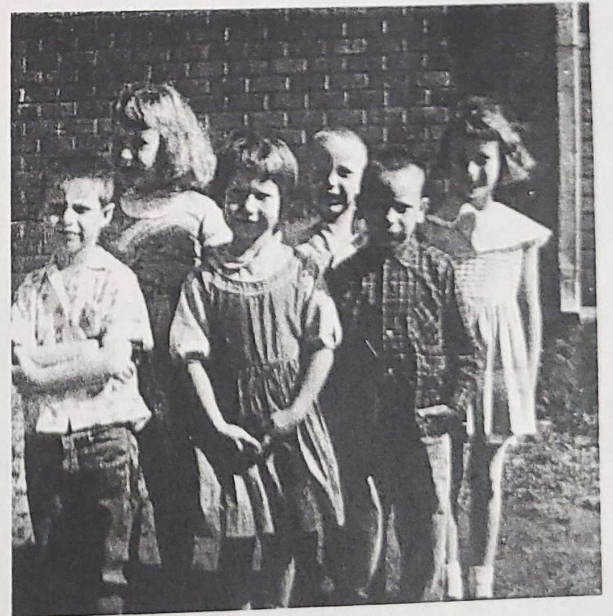
Mrs. Yost room — 1965



Ready for vacation — 1965. Mrs. Yost and Mrs. Stoll, teachers

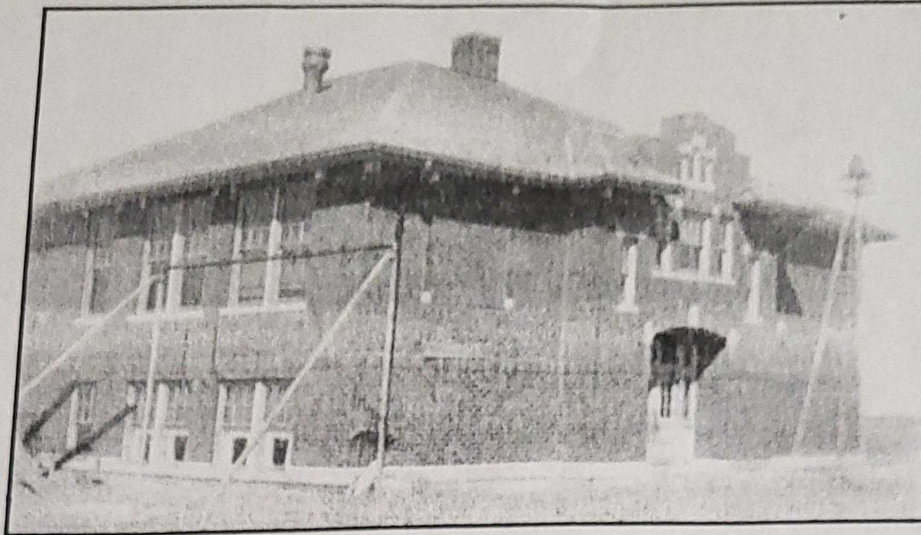


Mary Junkin, Rick Franzen, Ike Snider, and Cherrise McGee



Back row, Joyce Robb, Gary Wissmann, and Tami Stuehm. Front row, Billy Robb, Cindy Gimple, and Neil Junkin





Smithfield High School occupied the upper level of this 1918 building.

## Smithfield High School 1897 - 1949

In eastern Gosper County near the close of the 19th century, the Burlington Railroad literally laid rails through E. B. Smith's farm field, giving rise to a town name. Earlier, in 1884, District 22 had been organized and had opened an elementary school in a one-room sod building north and west of the eventual Smithfield townsite. In 1897 the same E.B. Smith and his wife deeded a plot of land in Smithfield village to the district. A two-story frame building was constructed at this site, accommodating Smithfield's elementary school and its first high school students, in grade 9 with C. A. Yeoman as their teacher. Grade 10 was added in 1912.

During World War I, 1917-18, a two-story brick school including an auditorium was built following voter approval of a \$20,000 bond issue; school board members were Frank Frazell, Herman Scheel and Herman Brand. The 11th grade was added in 1922-23. The 12th grade followed in 1923-24, a year which saw Smithfield High School's first class of six seniors graduate in the spring. Supt. Gladys Wilson and school board member Max W. Junkins reported a high school enrollment of nearly 30 students in 1924-25.

For more than 30 years Smithfield High School students enjoyed the challenges of scholarship in the durable brick building. Extracurricular contests in basketball and other sports found the red and white uniformed Smithfield Bulldogs playing with enthusiasm.

In 1949 the last seniors graduated from Smithfield High during the tenure of Supt. Nellie Thayer and high school teacher Marie Mitchem. Thereafter young people from the Smithfield area went to high schools in nearby communities; in 1966 the Smithfield district merged with Bertand District 54 in western Phelps County. That ended the educational use of the school building, which still stands, but now as a privately-owned family residence.

Periodically alumni gather to reminisce about the old days when drama, band and music classes, volleyball and basketball made for a busy, fruitful mix at Smithfield High School.

Gosper County Supt.  
Rosemary Stagemeyer  
P.O. Box 125  
Elwood, NE 68937



Smithfield



Bulldogs



Dr. Joe Jeffrey entertained the "Smithfield Bulldogs" at their reunion in Smithfield on Sunday afternoon. Vaun Junkin was the master of ceremony for the afternoon program.



Graduates of Smithfield High School posed for a picture at the reunion Saturday afternoon. People came from California to Florida for the full-day of activities. In the morning, the new St. John's Catholic Church was filled for their service. The Altar Society served a brunch afterwards. Reminiscing began early in the afternoon with a laughter-filled presentation by Dr. Joe Jeffrey. A cream can supper rounded out the day's events. (Bulletin Photos)

# Bulldog reunion held in Smithfield, 100 classmates gather Sunday

Former classmates, friends and relatives of students who attended school at District's #43 and #22 of Smithfield met in Smithfield on Sunday, July 6.

The idea for the reunion came about when Marian Dodson Vinzant of California began writing to former classmates. This multiplied into the reunion and "delightful day" according to many. Organizers in Smithfield, Illa Anders and Lucille Hagan estimated that over 100 attended the reunion where a lot of reminiscing and visiting were accomplished.

Vaun Junkin served as master of ceremony for the day which started with "A Second Chance Prayer, Lord let me serve." He went on to read the poems, "Healthy As A Horse," "Tomorrow," "I am Fine," "No Smoking in the Little House Behind The House," "Little Trailer House." The poems brought a lot of nods of agreement and smiles of recollection.

The oldest graduate attending the reunion was Lois Bigelow Carter, who graduated in 1926 and lives in Elwood. The youngest graduate was Alfred Holscher, who graduated from the last Smithfield High School Class in 1949. Holscher lives in Smithfield. Former teachers attending were Deborah Hock and Marie Melosh Bigelow. The roll call of classes was read with those in attendance receiving applause.

Dr. Joe Jeffrey, honorary citizen of Smithfield presented entertaining tales of Smithfield, the surrounding area and local characters. Jeffrey's attire brought applause from the crowd when he revealed his red and white Smithfield Bulldogs t-shirt.

A cream-can dinner was served to the crowd and "a new experience for some," Mrs. Anders said. This was prepared and served by the Smithfield Community Club with "lots of help from outsiders." Roasting ears, potatoes, carrots, cabbage and sau-

- 1932-Esther Brand Hall
- 1935-Ethal Brand Ebrmeier, Dorothy Curtis, Marie Melosh Bigelow
- 1936-Lawrence Hanson, Virgil Brand
- 1938-Delmar Brand
- 1939-Robert Hock, Norris Holthus

1940 - Ruth

- Fastenau Franzen,
- Naomi Forster McGee

1943-Winona

- Forster Bogner, Leon Brand

1944-Dean Brand,

- Francis Fox, Lillian Dodson Keup, Jerry Way

1945 - Frank

- Tomasek, Marion Dodson Vinzant, Dale Fox

1946-Eugene

- Wilken, Patricia Glenn Compton

1947-Harlan

- Hock, Vaun Junkin

1948-Pauline

- Schwarz Steinbrink, Paul Schwarz, Homer Davis Jr, Elaine Holscher Weber, Phyllis Holthus Oberg

1949-Alfred Holscher.

Other District #43 students attending were Anna Lewis Meyer, Dorothy Davis, Harold Wilken, Bill Richardson, Norma Richardson, Deborah Hock-teacher, LaVerne Seeman, Frank Tomesek, Dorothy Curtis Young, Verna Curtis Pennington, Marie Melosh Bigelow-teacher, Lillian Dodson Keup, Marion Dodson Vinzant..



Smithfield schoolhouse

sage were slow cooked over hot coals in cream cans and smelled mighty good!

The new St. John's Catholic Church held open house allowing everyone a chance to view their new church.

A very enjoyable day was had by all "and it was hard to say good-bye to the old friends that we went to school with."

- Attending were:
- 1926-Lois Bigelow Carter
- 1931-Eldred Junkin

## History of Smithfield Public School

Early in 1884, District 22 was organized and an elementary school in a one-room sod house north and west of the eventual Smithfield townsite was built. In 1897, E.B. Smith deeded a plot of land in Smithfield village to the district.

A two-story frame building was constructed at the site for elementary and high school. C.A. Yeoman was the 9th grade teacher. Tenth grade was added in 1912.

A two-story brick school building with auditorium was built in 1917-1918 after a voter approval of the \$20,000 bond issue. Eleventh grade

was added in 1922-23 and 12 grade in the following year. The class of 1925 was the first graduating class with Roger Rightmire, Netta Walcott (Rightmire), Mabel Schwarz (Maaske), Verna Coy (Eckland), Eva Frazell, Eva Ewen and Margaret Glenn.

The last class graduated in 1949: Bill Baum, Eldred Maaske and Alfred Holscher.

Grade school classes were held until 1966 when the district merged with surrounding schools.

The structure is now a private home.



#23

DUFF SCHOOL

Legal Description of School  
NE 1/4 NW 1/4 14-7-21





Description of School Districts in *Gosper* County, as shown by map No. *Mad.*

*Jan 13 1896*

STATE JOURNAL CO. Blank Book Makers Stationers and Printers Lincoln Neb.

No. of District	Date of Formation			DESCRIPTION—PARTS OF SECTIONS	SECTIONS	TOWN	RANGE	REMARKS
	Year	Month	Day					
<i>23</i>		<i>Bluff</i>		<i>all</i>	<i>1 2 3 10 11 12 13 14 15</i>	<i>7</i>	<i>21</i>	
	<i>1907</i>	<i>4</i>	<i>2</i>	<i>all</i>	<i>1 2 10 11 12 13 14 15</i>	<i>7</i>	<i>21</i>	<i>changed from former description of Gosper by legal voters in district.</i>
	<i>1956</i>	<i>July</i>	<i>1</i>	<i>Discontinued by petition of 55% of legal voters, Sec. 79-402, Nebraska School Laws, and attached Dist. No. 63 Gosper + No. 54 Phelps Counties.</i>	<i>East half</i>			



#24

DALE SCHOOL

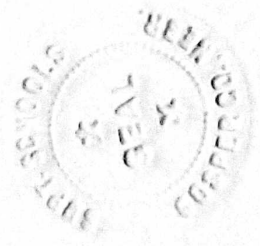
Legal Description of School  
NE 1/4 NW 1/4 14-8-22





Description of School Districts in *Gosper* County, as shown by Map No. *Made*  
*Jan 13 1894*

No. of District	Date of Formation			DESCRIPTION—PARTS OF SECTIONS	SECTIONS	TOWN	RANGE	REMARKS
	Year	Month	Day					
24				<i>Jim Hale,</i>	<i>All</i>			Discontinued by petition of 55% of voters and new district No. 4 was formed from District 24, 50, 52+53. according to sec. 79-402, Nebraska School Laws. March 29, 1951.
	1951	March	29	Discontinued by petition of 55% of legal voters, section 79-402, to form Dist. No. 4	1 2 3 10 11 12 13 14 15	8	22	



#25

FAIRY (MULLEN) SCHOOL

Legal Description of School  
NE 1/4 SE 1/4 9-7-21

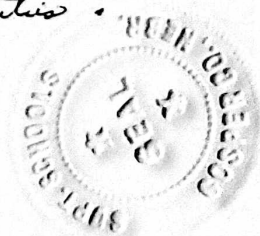




Description of School Districts in *Gosper* County, as shown by Map No. Made  
Jan 13, 1896

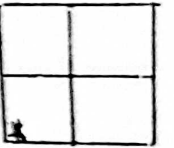
STATE JOURNAL CO., BROAD CASTERS, SIGNERS and PRINTERS, Lincoln, Neb.

No. of District	Date of Formation			DESCRIPTION—PARTS OF SECTIONS	SECTIONS	TOWN	RANGE	REMARKS
	Year	Month	Day					
25				<i>Job Muller</i>	<i>all</i>			
					23 24 25 26 35 36 22 27 34			
						5	21	
	1940	May	29		SW $\frac{1}{4}$ + S $\frac{1}{2}$ NW $\frac{1}{4}$	30	5	20 Phelps Co.
					added by transfer May 29, 1940. from Dist. No. 65, Phelps Co. to Dist 25 Gosper Co.			
	1959	Aug	17	Discontinued by petition of 55% or more of legal voters, Sec. 79-402, Nebraska School Law and attached to Districts No. 7 Gosper County, No. 63-54 Gosper & Phelps Counties.				



#26R

SW corner of SW $\frac{1}{4}$  section 6 Township 6 Range 22





#26

LONE STAR (FRENCH) SCHOOL

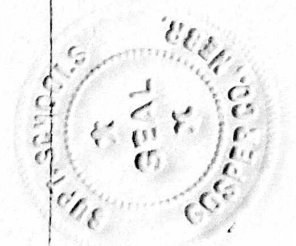
Legal Description of School

NE 1/4 SE 1/4 9-7-21



Description of School Districts in *Gosper* County, as shown by Map No. Made *Jan 19 / 1896*

No. of District	Date of Formation			DESCRIPTION—PARTS OF SECTIONS	SECTIONS	TOWN	RANGE	REMARKS
	Year	Month	Day					
<i>26</i>				<i>Jerome French</i>	<i>all</i>			
					<i>4</i> <i>5</i> <i>8</i> <i>9</i> <i>14</i> <i>17</i>	<i>7</i>	<i>21</i>	<i>Discontinued by petition and annexed to No 22 Jan. 7. 1902</i>
				<i>E2</i>				





#27

ROBBINS SCHOOL

Legal Description of School  
NW 1/4 NW 1/4 23-6-22

1888-Date of warranty deed, November 5, 1888

1959-Closed August 27, 1959



# Description of School Districts in *Yosper* County, as shown by map No. 1111 Jan 13 1894

STATE JOURNAL CO., Blank Book, Stationers and Printers, Lincoln, Neb.

No. of District	Date of Formation			DESCRIPTION—PARTS OF SECTIONS	SECTIONS	TOWN	RANGE	REMARKS
	Year	Month	Day					
27				<i>Robbins</i>	<i>all</i>			
					10			
					11			
					14			
					15			
					16			
					22			
					23			
					26			
					27			
					28			
				<i>M<sup>2</sup> and S E<sup>1</sup></i>	21			
				<i>S<sup>1</sup>/<sub>2</sub></i>	9			
				<i>S<sup>2</sup></i>	3			
				<i>S<sup>2</sup></i>	2	<i>6</i>	<i>22</i>	
				<i>Boundaries changed June 15, 1948 and are now as given below:</i>				
				<i>all of</i>	2			
					3			
					10			
					11			
					14			
					15			
					16			
					22			
					23			
					26			
					27			
					28			
					21			

Area attached from District 34 which was dissolved according to L.C. 79-12 Rev. St. of Neb., 1943. H<sup>2</sup> 2, H<sup>2</sup> 3, -



25  
26  
27  
28  
21  
9

6 22

N<sup>2</sup> and S<sup>2</sup> E<sup>4</sup>  
S<sup>2</sup>

1959 Aug 27

Discontinued as provided in Section No. 79-486, Nebraska School Laws - and area attached to District No. 30, (Elwood) Gosper County, Nebraska.



**Hammond & Stephens**

...helping educate America for 100 years

WESLEY A. PAAP

Representative

#27 Robbins

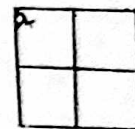
Date Wty Dead.  
Nov 5, 1888

Closed. Aug 27, 1959

Page 2.

#27

Commencing at a point 14 rods south of the NorthWest corner of Section 23, township 6 North of Range 22; thence South 209 feet; thence East 209 feet; thence North 209 feet; thence West 209 feet to the place of beginning --containing 1 acre.





#28

JOHNSON SCHOOL

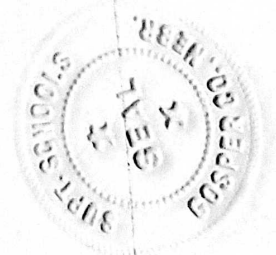
Legal Description of School  
NE 1/4 NE 1/4 14-5-21

Leggott (East Muddy)



Description of School Districts in *Gosper* County, as shown by Map No. *Made Jan 13 1896*

No. of District	Date of Formation			DESCRIPTION—PARTS OF SECTIONS	SECTIONS	TOWN	RANGE	REMARKS
	Year	Month	Day					
<i>28</i>				<i>Johnson</i>	<i>All</i>			
					<i>12</i>			
					<i>11</i>			
					<i>12</i>			
					<i>13</i>			
					<i>14</i>			
				<i>E 2</i>	<i>3</i>			
				<i>E 2</i>	<i>10</i>			
				<i>E 2</i>	<i>15</i>	<i>5</i>	<i>21</i>	
<i>1956</i>	<i>July</i>	<i>1</i>		<i>Discontinued by petition of legal voters, Section 99-402, Nebraska School Laws and attached to District No. 63 Gosper and No 54 Phelps Counties.</i>				





#29

FOUR CORNERS SCHOOL

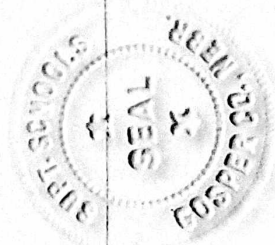


# Description of School Districts in *Gosper* County, as shown by Map No. *Mad*

*Jan 13 1894*

STATE JOURNAL CO. Blank Book Makers Stationers and Printers Lincoln Neb.

No. of District	Date of Formation			DESCRIPTION—PARTS OF SECTIONS	SECTIONS	TOWN	RANGE	REMARKS	
	Year	Month	Day						
<i>29</i>				<i>Four corners.</i>	<i>SW<sup>4</sup> all</i>				
					<i>28</i>				
					<del><i>29</i></del>				
					<i>32</i>				
					<i>33</i>				
					<i>34</i>	<i>6</i>	<i>21</i>		
					<i>4</i>				
					<i>5</i>				
					<i>8</i>				
					<i>9</i>				
					<i>16</i>				
					<i>17</i>				
					<i>W<sup>2</sup></i>				
					<i>3</i>				
					<i>W<sup>2</sup></i>				
					<i>10</i>				
					<i>W<sup>2</sup></i>	<i>5</i>	<i>21</i>		
					<i>15</i>				
<i>1956</i>	<i>July</i>	<i>1</i>		<i>Discontinued by petition of legal voters (55%), Section 79-402 Nebraska School Laws, and attached to District No 63 Gosper and No. 54 Phelps Counties.</i>					





#30

Elwood Public

ELEMENTARY & HIGH SCHOOL

ELWOOD VILLAGE



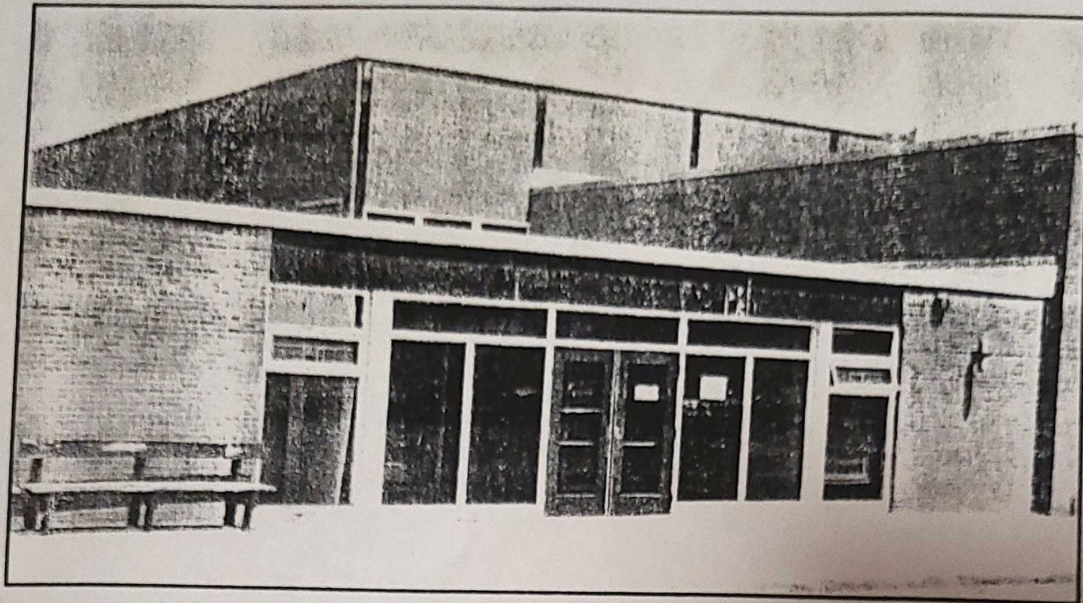




ELWOOD PUBLIC SCHOOLS







Entry-way to the Elwood High School, built in 1968.

## Elwood High School 1895 - Present

South from Lexington on U.S. 283, across the Platte River and past the Johnson Lake recreation area, at about the 16-mile mark one comes to the junction with State Highway 23 and the town of Elwood, Gosper County seat. With arrival of the Burlington Railroad's Holdrege-Sterling, Colorado, "high line" in the 1880s, Elwood enjoyed a prosperity that led to establishment in 1895 of one of south central Nebraska's early high schools. Records indicate such subjects as psychology, geography, orthographics, writing, reading, drawing, U.S. history, arithmetic and grammar were reviewed by the Elwood high school teachers at an 1895 convention.

Throughout its almost 100-year history, Elwood High School has enjoyed the conscientious support of area parents and citizens. By 1901 Supt E. Shallenberger and others advocated building of a new school; it was finished in 1904 at a cost of \$1,200 for site, \$2,000 for building and \$300 for books. Again in 1922 the Elwood district built a new school, which was supplemented 40 years later with a new gymnasium and construction of a new grade school building. Then in 1968 the present high school was added to the gymnasium-elementary complex at a cost of \$395,000. The 1904 teaching staff of C. A. Weoman, Maud Weoman, S. M. Montgomery and

Mary Horn would no doubt appreciate today's extensive facilities. They might also try comparisons with the 1993-94 report by Supt. David D. Wade, in his 13th year at the Gosper County school: 78 students in grades 9-10-11-12, plus 44 in grades 7-8; 16 teachers assigned to secondary level instruction.

Students of Elwood High School have carried the maroon and white school colors to fame across the state in numerous competitive endeavors. Sportswriters rated the Elwood Pirates football team No. 1 in their class in 1957 and 1958. The boys basketball team were state champions in 1928 in Class J and won a district championship and the right to compete in the state tournament again in 1990. Elwood's track teams have set a high standard of excellence for both boys and girls. In the 13 years 1969-1982 the boys were Class D state track champions (1979, 1981, 1982) or runners-up (1969, 1975, 1980) six times. The girls track team was the state Class D winner in 1973 and 1974.

There appears to be no better slogan for this high school than the title of the school song, "Onward Elwood." Hundreds of successful graduates of Elwood High School can agree to that worthy mission.



#30

Commencing at the intersection of the West line of Calvert Avenue South, in the Town of Elwood, according to the recorded plat thereof, with the south line of Rockford Street; thence west in said south line of Rockford Street 300 feet,; thence East parallel with the South line of said Rockford Street 300 feet to a point in the projection of the west line of Calvert Avenue, South, thence north in the East line of said Calvert Avenue projection 300 feet to the place of beginning.



# Elwood speller to compete in state contest

Tracie Hutchinson will represent Gosper County in the 26th annual Midwest Spelling Bee which will be held on Saturday, April 16 at Burke High School in Omaha.

The Elwood girl captured first place in the recent competition to earn the right to represent the county. One entrant from each Nebraska county is eligible for the Omaha contest.

Brenda Corder finished second and will be the alternate.

Next in line were Angela Puls, Kristen Nelson, Jeff Schultz and Andrea Lucas. Students are from grades 5 through 8.

# ***Elwood***

The Elwood district has made some changes and additions to its curriculum.

The trigonometry-calculus class has been dropped from the schedule while physics, computer science and robotics awareness as been added.

Five new teachers have joined the staff. Wynne Adams will teach vocal and instrumental music from kindergarten through the 12th grade. Bruce Hird will instruct the science class while David Blessing will teach speech and English. Jo D. Blessing will take over the responsibility of the fifth grade class while Kimmie Williams will handle the kindergarten class and elementary health.

Classes will start on Aug. 29 at 8:25 a.m.



Aug 20, 1953

THE "NEW"

# Elwood Theater

STARTING TIME — 8:00 P.M.

FRIDAY and SATURDAY

*Dale* **ROBERTSON**  
*Jeanne* **CRAIN**

**CITY OF BADMEN**  
COLOR BY **TECHNICOLOR**

DARING OUTLAW EXPLOITS!

LLOYD BRIDGES

SUNDAY and MONDAY

Broadway's Show-Stopper Musical NOW ON THE SCREEN

★ Irving Berlin's **"Call Me Madam"**  
COLOR BY **TECHNICOLOR**

Ethel MERMAN · Donald O'CONNOR  
VERA ELLEN · George SANDERS

Music by Irving BERLIN

WEDNESDAY and THURSDAY

**FAST BORDER ADVENTURE**

**ROY ROGERS**  
and **TRIGGER**  
The Smartest Horse in the Movies

**"PALS of the GOLDEN WEST"**

A REPUBLIC PICTURE

DALE EVANS · ESTELITA · PINKY LEE



# SCHOOL OPENS

Tuesday, Sept. 1st—

### Girls' Triple Rolled BOBBY SOX—

White, nylon re-enforced heel and toe.

7-11. Four pr. guar'd 4 months. **4 pr \$1.00**

### New Fabrics — CHROMESPUN PLAIDS —

Looks like taffeta, yet washes perfectly.

Perspiration proof. Reasonably priced,

ONLY ..... yd. **59c**

### KRAY PLAY —

A loose woven crepe weave, rayon and cotton fabric, high lustre, sanforized. A beautiful piece of goods ..... yd. **69c**

### TWINSOME TWEED—

Fast color conservative cotton fabric,

suitable for skirts, suits, etc. .... yd. **69c**

### Boys' Rugged

### BACK-TO-SCHOOL OXFORDS—

(a) Regular 4.98 — Our low price **\$3.98**

Sizes 2 to 6.

(b) Reg. 6.98 Red Goose heavy built oxford. Raw cord sole - -

out lasts two pair any other type.

Sizes 2 to 6 ..... **\$4.98**



D WEARING "DICKIES"  
ar BOYS' RANCH JEANS

New  
FALL DRESSES





# SPECIAL!

LADIES' NYLONS

66 Gauge 15 D

More threads per inch making a stronger hose, yet is a sheer, good looking hose.

98c pr.



Fruit of the Loom

CHILDREN'S DRESSES

Wonderful washable cotton tweed

\$1.98

Sizes 2-3-4-5-6

Girls' Back-to-School Saddle Oxfords

\$2.98



## HARD WEARING "DICKIES" Regular BOYS' RANCH JEANS

Western cut -- snug hips -- seams re-enforced with copper rivets  
 Sizes to 10 ----- \$1.98  
 Sizes to 16 ----- \$2.35

## Genuine "ROY ROGERS" BLANKETS

Just the thing for your boy's room

\$4.25

# SPECIAL!

## SAVE ON LEATHER GLOVES

\$2.00 All Leather Horse Hide WORK GLOVES

\$1.49 pr.

\$1.49 Best Quality Canvas Back Leather Gloves

\$1.19

## All Types SCHOOL SUPPLIES

Tablets — Ink — Note Paper  
 Crayons — Pens — Pencils

## HISTORY NOTE

PAPER

69c

ream

## New FALL DRESSES

"LUSTRE FAB"

Made of the new Everglaze

- ★ Wrinkle resistant
- ★ Fade proof
- ★ Guaranteed fast to washing

\$4.98

Sizes 9 to 15



## CORDUROY —

Finest combed pinwale in newest colors for fall sewing \$1.29 yd

## SEE OUR BOYS' JACKETS BEFORE YOU BUY!

Our low overhead enables us to sell them below market price. Good heavy weight winter jackets as low as—

\$5.98

# SPECIAL!

Genuine Rockford WORK SOX

First quality. Sizes 10 to 12

Regular weight

4 pair \$1.00

BUY AT —

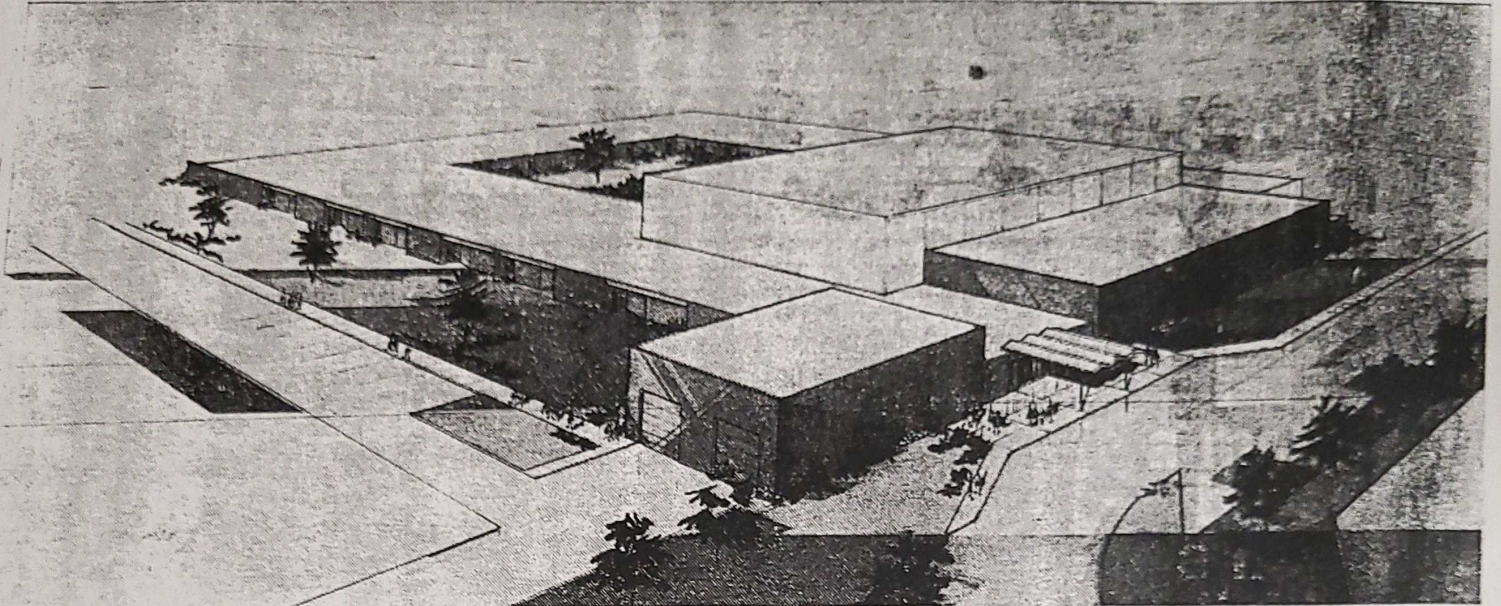
# CLARK'S

— WE UNDER SELL

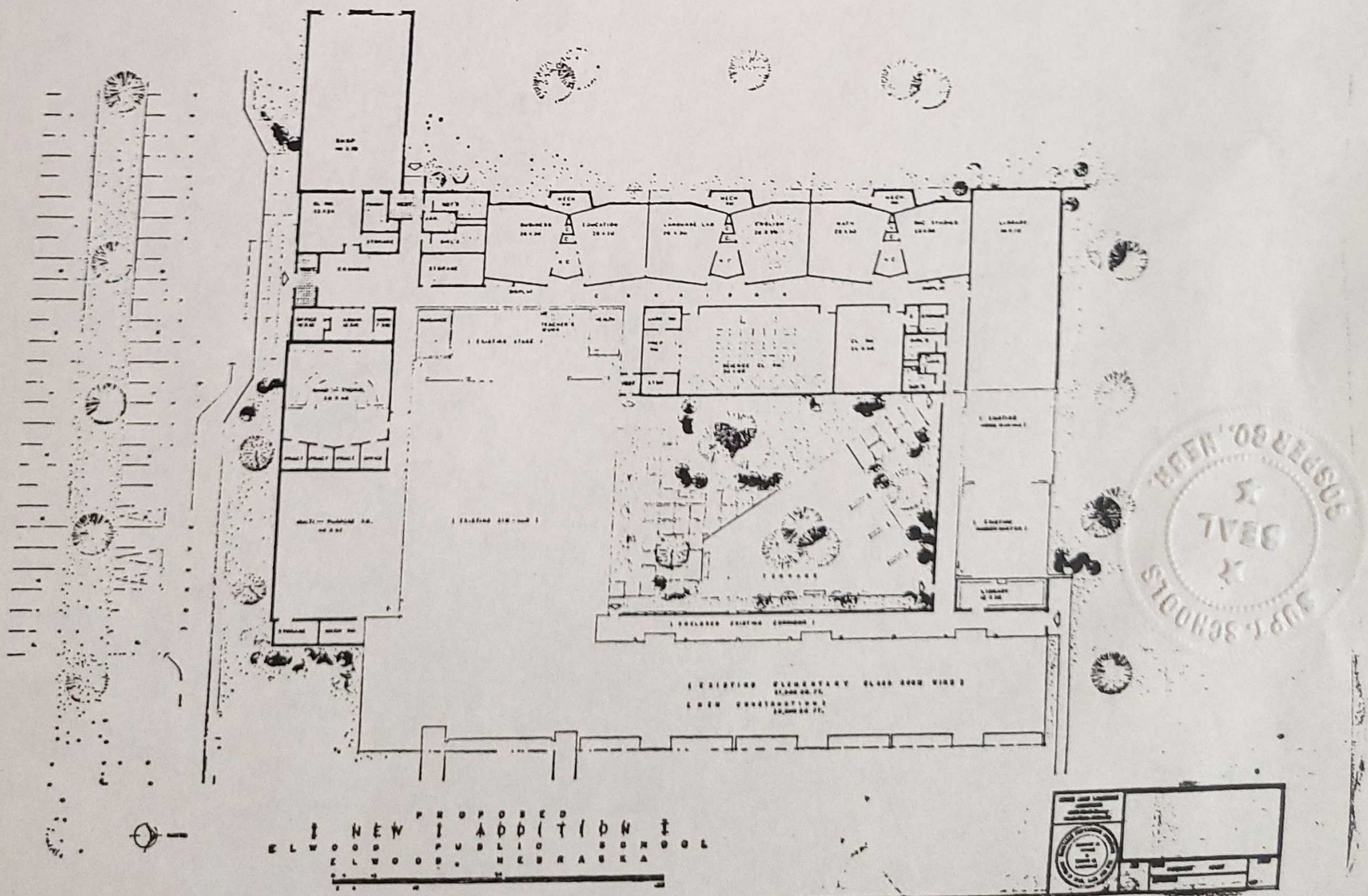


...ives pass by.

# School Bond Election Tuesday, Oct. 10



ARCHITECTS SKETCH AND FLOOR PLAN OF PROPOSED JUNIOR-SENIOR HIGH SCHOOL ADDITION



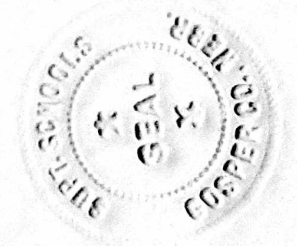
PROPOSED  
NEW ADDITION  
ELWOOD PUBLIC SCHOOL  
ELWOOD, NEBRASKA





Description of School Districts in *Gosper* County, as shown by Map No. Made *Jan 13 / 1894*

No. of District	Date of Formation			DESCRIPTION—PARTS OF SECTIONS	SECTIONS	TOWN	RANGE	REMARKS
	Year	Month	Day					
30				<i>Elwood</i>	<i>all</i>			
					5			
					6			
					7			
					8			
					17			
					18			
				<i>W<sup>2</sup></i>	4			
				<i>W<sup>2</sup></i>	9			
				<i>W<sup>2</sup></i>	16	7	22	
				<i>all</i>	1			
					12			
				<i>E<sup>2</sup></i>	2			
				<i>E<sup>2</sup></i>	11	7	23	
1957	June	1		Boundaries changed and are now as given below:				
				<i>all</i>	2-3-4			Area attached from Districts 32, 36, 39, 47, 54, 58 + 60 and part of 24R.
					5-6-7			
					8-9-10			
					11-14-15			
					16-17-18			
					23-25-26			
					35-36			
				<i>W<sup>1</sup>/<sub>2</sub> + SE<sup>1</sup>/<sub>4</sub></i>	24	7	22	
				<i>all</i>	4-5-6			



19-20-21  
 22  
 NE  $\frac{1}{4}$  except South 10 Acres 27  
 NW  $\frac{1}{4}$  27  
 N  $\frac{1}{2}$  28  
 N  $\frac{1}{4}$  29  
 NW  $\frac{1}{4}$  30

6 23.

all

1-2-3  
 4-5-6  
 7-8-9  
 10-11-12  
 13-14-15  
 16-17-18  
 19-20-21  
 22-23-24  
 25-26-27  
 28-29-30  
 31-32-33  
 34-35-36

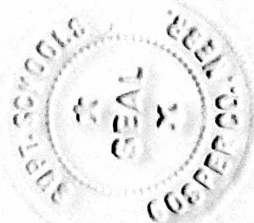
7 23

all

1-2-3  
 10-11-12  
 13-14-15  
 21-22-23  
 24-25-26  
 27-28-31  
 32-33-34  
 35-36

8 23

See Page 75





#31

# SCALES

SE 1/4-SE1/4-31-7-22



~~Description of School Districts in~~ *Gosper* County, as shown by Map No. *Winds*  
*Jan 13 1896*

STATE JOURNAL CO. Blank Book Makers, Stationers and Printers, Lincoln, Neb.

No. of District	Date of Formation			DESCRIPTION—PARTS OF SECTIONS	SECTIONS	TOWN	RANGE	REMARKS
	Year	Month	Day					
31				<i>Bill Scales</i>	<i>all</i>			
					19			
					20			
					21			
					28			
					29			
					30			
					31			
					32			
					33	7	22	
				<i>all</i>	4			
					5			
					6			
				<i>N 2</i>	7			
				<i>N 2</i>	8			
				<i>N 2</i>	9	6	22	
				<i>Boundaries changed June 15, 1948 and are now as given below:</i>				
				<i>all of</i>	19			
					20			
					21			
					22			
					23			
					24			
					25			
					26			
					27			
					28			
					29			
					30			
					31			
					32			
					33			
					34			

*Area attached from Dist. 34 which was dissolved according to Sec. 79-137*



all of

n 2  
n 2  
n 2

4  
5  
6  
7  
8  
9

6

22

Discontinued by Petition of  
more than 55% of legal  
voters and new district  
No. 26A was formed from  
Districts 13, 31 and 55  
according to Sec. 79-402  
Nebraska School Laws.

May 22, 1953

#32

# BRACE SCHOOL

LEGAL DESCRIPTION OF SCHOOL  
SE 1/4 NE 1/4 11-8-23

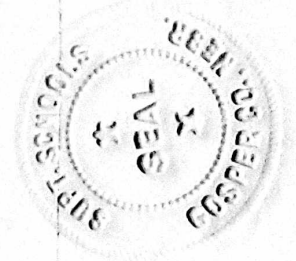




Description of School Districts in *Gosper*

County, as shown by Map No. Made  
*Jan 13 / 1896*

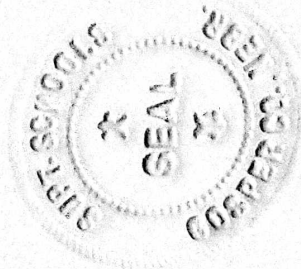
No. of District	Date of Formation			DESCRIPTION—PARTS OF SECTIONS	SECTIONS	TOWN	RANGE	REMARKS
	Year	Month	Day					
32				<i>Solomon Brace</i>	<i>all</i>			
					1			
					2			
					3			
					10			
					11			
					12			
					13			
					14			
					15	8	23	
	1957	June	1	Discontinued by petition of 55% of legal voters, Section 74-402 Nebraska School Laws and attached to District No. 30, Gosper Co.				



#33

PHILLIPS GROVE

NE1/4-NW1/4 1-5-22

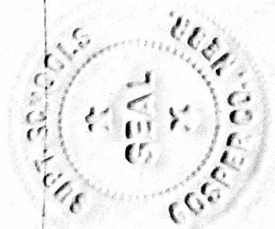




Description of School Districts in *Gosper* County, as shown by Map No. Made *Jan 13 1896*

STATE JOURNAL CO., Blank Book Makers, Stationers and Printers, Lincoln, Neb.

No. of District	Date of Formation			DESCRIPTION—PARTS OF SECTIONS	SECTIONS	TOWN	RANGE	REMARKS
	Year	Month	Day					
33				<i>all</i>	31	6	21	<i>Discontinued by petition, Sec. 179-402 Nebr. School Laws and attached to District No. 7. June 1, 1955</i>
				<i>all</i>	6	5	21	
					1			
					2	5	22	
					35			
					36	6	22	



#34

OSBORN

SW1/4-NW1/4 26-7-22





Description of School Districts in *Gooper*

County, as shown by Map No. *Made*  
*Jan 13 / 1896*

No. of District	Date of Formation			DESCRIPTION—PARTS OF SECTIONS	SECTIONS	TOWN	RANGE	REMARKS
	Year	Month	Day					
<i>34</i>				<i>Jim Ashman</i>	<i>all</i>			
					<i>22</i>			
					<i>23</i>			
					<i>25</i>			
					<i>26</i>			
					<i>27</i>			
					<i>34</i>			
					<i>35</i>			
					<i>36</i>			
				<i>S 2</i>	<i>24</i>			
				<i>N W 4</i>	<i>24</i>	<i>7</i>	<i>22</i>	
				<i>N 2</i>	<i>3</i>			
				<i>N 2</i>	<i>2</i>	<i>6</i>	<i>22</i>	
								<i>Disseolved according to section 79-137 Rev. St. of Neb. 1943. on June 15, 1948.</i>
								<i>attached to adjoining districts as follows:</i>
								<i>Sec. 22, 27, + 34 all in Township 7 north, Range 22 West of 6th S.M. to District No. 31 and</i>

#35

## SPRING/FAIRVIEW

SW 1/4-NW 1/4 26-6-21

### FAIRVIEW

The preliminary school term, which had to be conducted in order to qualify for the organization of an official school, was held in the home of Hartford Livingston. Lydia Connely, who had just completed her studies at Hastings College, was hired to teach classes.

On February 20, 1885, the County Superintendent, S.B. Yeoman, formed School District 35 outlining the boundaries which contained 15 sections of land.

The first school house was built by the taxpayers of the district from prairie sod. In 1907 a new frame school house was erected and named Fairview school but as time went by it was called the Spring school. This building served the school district until 1942 when the pupils started attending school in Bertrand.

From: Gosper County Supt. Rosemary Stagemeyer &

The Elwood Bulletin--August 7, 1986





## Fairview School

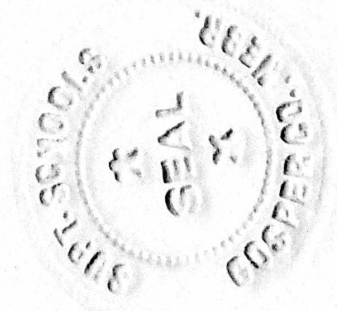
As the area was settled, the people became concerned about their children's education. Before a district was formed, a teacher was hired to teach a three-month school term. The teacher was paid twenty dollars a month, the parents of students paid the wages and also took turns boarding the teacher. Classes were also conducted in one of the homes.

In February, 1885, school district number thirty-five was formed. All qualified voters had been notified of the meeting to be held to organize the district. The voters were to be notified either verbally or in a written notice. One of the requirements to be counted as a qualified voter was the ownership of at least one cow. At this first meeting, officers were elected and boundaries discussed.

On April 6, 1885, the first annual meeting was held. At this meeting, it was decided to levy a tax for building purposes and for a teacher's salary. Seventy-five dollars was agreed upon to build and furnish a building.

The first teacher's contract was issued to Miss Lydia Connely on October 20, 1885, for the three month term to begin the last of October. She had already taught the preliminary term.

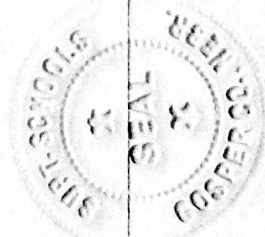
Miss Connely had attended the Hastings College which had just opened as one of the first students.



Description of School Districts in *Gosper* County, as shown by Map No. Made *Jan 13 1896*

STATE JOURNAL CO. Job & Book Makers, Stationers and Printers, Lincoln, Neb.

No. of District	Date of Formation			DESCRIPTION—PARTS OF SECTIONS	SECTIONS	TOWN	RANGE	REMARKS
	Year	Month	Day					
35		Jan		Spring	all			
					21			
					22			
					27			
					26			
				Changed Dec 4 / 1905	25			
					35			
					36			
					15			
					23			
				Changed Dec 4 / 95	24			
					28			
					34	6	21	
					24	6	21	
				SW <sup>4</sup> and N <sup>2</sup> of NW <sup>4</sup> and SW <sup>4</sup> of NW <sup>7</sup>	25	6	21	
1951	August	11	Boundaries changed and are now as given below:					
				all	21			
					22			
					23			
					24			
					25			
					26			



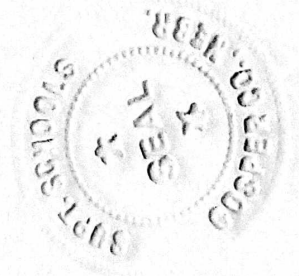
Since its present form by dissolution of Dist. #48 by petition of 55% of legal voters under Sec 79-402, Neb. School Laws. and attachment of E<sup>1</sup>/<sub>2</sub> of section 24, E<sup>1</sup>/<sub>2</sub> of Sec. 25 and S E<sup>1</sup>/<sub>4</sub> NW<sup>4</sup> of Sec. 25 T. 6 R. 21, Gosper Co. D. A. 21, Annex 4



#36

PLEASANT HILL (CHAMBERS)

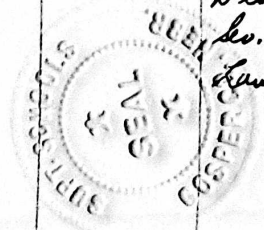
SE1/4-SW1/4-23-7-23



Description of School Districts in *Gosper* County, as shown by Map No. *Made*  
*Jan 13 / 1896*

No. of District	Date of Formation			DESCRIPTION—PARTS OF SECTIONS	SECTIONS	TOWN	RANGE	REMARKS
	Year	Month	Day					
36				<i>Chambers</i>	<i>all</i>			
					13			
					14			
					15			
					16			
					22			
					23			
					24			
					25			
					26			
					27			
					34			
					35			
					36	7	23	
36	1954	June	21	<i>Boundaries changed and are now as given below:</i>				
				<i>all</i>	13			
					14			
					15			
					16			
					21			
					22			
					23			
					24			

*Given its present form by dissolution of Dist. #56 under Sec. 79-420 of Neb School Law + same to Dist. 36.*



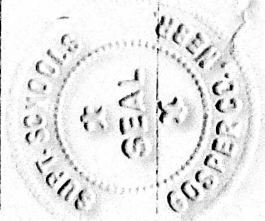


from Dist 56, Douglas & Phelps Co.  
 S. 1/2 of Section 13, & S. 1/2 of Section 14, NE 1/4 of Section 23  
 NW 1/4 of Section 24 Township 6 Range 21  
 Douglas Co. from Dist. 48, Douglas Co.

	27		
	35		
	36		
	12		
	14		
	15		
	28		
	34	6	21

1956 July 1

Discontinued by petition of 55% of legal voters,  
 Section 79-402, Nebraska School Laws, and  
 attached to District No. 63 Douglas and No. 54 Phelps Counties.



#37

BLACKWOOD

SE1/4 SE1/4 22-5-22

**SCHOOL DISTRICT NO. 37**

School District 37 was formed by S.B. Yeoman, County Superintendent, on October 3, 1885. A dugout was used as the school house until 1886 when a 14 x 16 sod building was erected. In 1894 a wooden building was erected and classes were moved there. In 1939 the school district was closed.

From: Gosper County Supt. Rosemary Stagemeyer &

The Elwood Bulletin--August 7, 1986



Description of School Districts in *Gosper* County, as shown by Map No. *Made Jan 13 1896*

STATE OF KANSAS, GEO. BRADY, CLERK. PRINTED AND BOUND BY STATIONERS AND PRINTERS, LINCOLN, NEB.

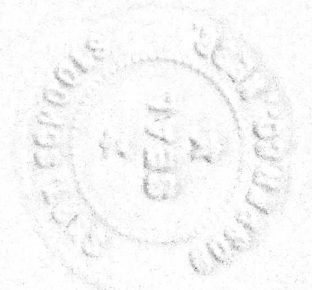
No. of District	Date of Formation			DESCRIPTION—PARTS OF SECTIONS	SECTIONS	TOWN	RANGE	REMARKS
	Year	Month	Day					
37				Blackwood <i>all</i>	15 22 23 26 27 34 35 14 21 28	5	22	Discontinued by petition, Sec. 79 D402 Neb. School Laws. and attached to District No. 7. June 1, 1953

*02*  
*02*  
*02*

#38

ASH GROVE

SW 1/4-SE 1/4 8-6-23





Description of School Districts in *Gosper* County, as shown by Map No. *Made*  
*Jan 13 1896*

No. of District	Date of Formation			DESCRIPTION—PARTS OF SECTIONS	SECTIONS	TOWN	RANGE	REMARKS
	Year	Month	Day					
38				Ash Grove	All			
					4			Discontinued by petition of more than 55% of legal voters and new district No. 24R was formed from Districts 15, 16 & 38 according to Nebraska School Laws, Sec. 79-402. May 25, 1953.
					5			
					6			
					7			
					8			
					9			
					16			
					17			
					18	6	23	



# Schoolhouses AT AUCTION

Due to consolidation of School Districts, the following will be sold at auction, starting at 1:00 o'clock on

## Saturday, Jan. 9

### NUMBER ONE

Ash Grove Schoolhouse, formerly District No. 38 located 10 miles southwest of Elwood on Highway 23S. This building is 20 x 30 feet with a 6 x 8 ft. annex; good 10 x 14 ft. coal shed; two toilets; books and desks. One Acre of Land.

### NUMBER TWO

Known as Gosper Schoolhouse, formerly Dist. No. 15, located 9 miles south and 3 miles west of Elwood. The school building is 20 x 30 feet with a 6 x 8 ft. annex. Also coal shed 8x12; books and desks; piano and organ. One and one-half Acres of Land.

District 16. — Coal house 8x10; 3-sided room 8x12; 2 toilets and One-half Acre of Land.

In all instances land will be conveyed to purchasers by Quit Claim Deed.

## School District 24R

GEORGE RENO, Auctioneer



#39

QUAKERVILLE

SE 1/4-NE 1/4-10-7-22



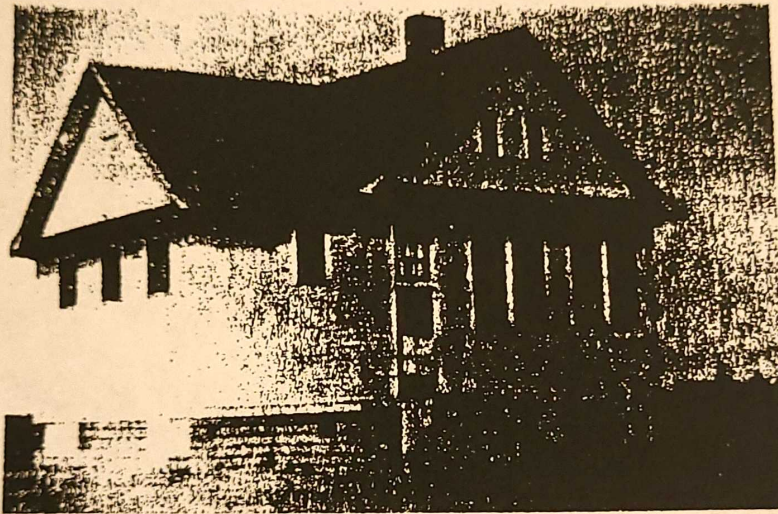


## QUAKERVILLE

Quakerville school was started in 1883 when some families decided to build a sod school house. The roof was made of poles and covered with fine brush and a final topping of sod. Classes were held here until about 1920 when the school disbanded.

From: Gosper County Supt. Rosemary Stageneter &  
The Elwood Bulletin--August 7, 1986

## QUAKERVILLE



*Quakerville school house. Church was held there after the church burned in 1912*

A family of Quakers settled in about 1875. They were soon followed by more of the same religion. The first building was a school house of sod with a pole roof of poles from Plum Creek and covered again with sod. The little sod school was also the religious center for a number of years. The building of the church was a neighborhood project. Hibbs, Dowler, Peters, Floyd, White, Anderson, Ozanne, Brown, Dingee, Reed, Vinzant, Hanlin, McGraw, Beli, and Paine were the names of the families. The people were very proud of their church and held regular services until 1912 when it burned down. After that the services were held in the school district #39 until about 1920 when the congregation disbanded. The building was sold to Our Redeemer in Elwood and served them as a church for some time.





Description of School Districts in *Gosper* County, as shown by Map No. Made *Jan 12 / 1896*

STATE JOURNAL CO., Printers and Carriers, Stationers and Binders, Lincoln, Neb.

No. of District	Date of Formation			DESCRIPTION—PARTS OF SECTIONS	SECTIONS	TOWN	RANGE	REMARKS
	Year	Month	Day					
39				<i>Quakerville</i>	<i>All</i>			
					2			
					3			
					10			
					11			
					14			
					15			
				<i>E 2</i>	4			
				<i>E 2</i>	9			
				<i>E 2</i>	16	7	22	
39	1953	July	25	Boundaries changed and are now as given below:				
				<i>all</i>	2			
					3			
					10			
					11			
					14			
					15			
					23			
					25			
					26			
					35			
					36			
				<i>E 2</i>	4			
				<i>E 2</i>	9			
				<i>E 2</i>	16			
				<i>N 2</i>	24			
				<i>S 8 4</i>	24	7	22	

Area attached from Dist. # 46 by petition of 55% or more of voters under law 79, 402, Neb. School Laws.



~~xxxxxx~~  
Attached to District No. 63 Gosper and No. 54 Phelps Counties.



#40

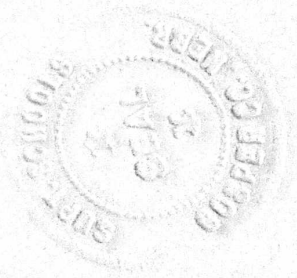
PRAIRIE GEM (YODER)

SW1/4-SE 1/4-3-6-21



Description of School Districts in *Gosper* County, as shown by Map No *Made*  
*Jan 13 / 1896*

No. of District	Date of Formation			DESCRIPTION—PARTS OF SECTIONS	SECTIONS	TOWN	RANGE	REMARKS
	Year	Month	Day					
40				<i>Yoder</i>	<i>all</i>			
	1899	March	4	<i>All of Sec 16</i>	<i>N<sup>2</sup> of E<sup>4</sup> W<sup>2</sup> + SW<sup>4</sup></i>	6	21	
					2			
					3			
					4			
					9			
					10			
					11			
					15	6	21	
					16	6	21	<i>Unorganized Territory</i>
	1951	August	11	<i>Boundaries changed and are now as given below:</i>				
				<i>all</i>	2			<i>Gives its present form</i>
					3			<i>by dissolution of Dist #48</i>
					4			<i>by petition of 55% of</i>
					9			<i>voters under Sec. 79-402,</i>
					10			<i>Nebr. School Laws.</i>
					11			
					12			
				<i>N 1/2</i>	13			
				<i>N 1/2</i>	14			
				<i>N 1/2 + SW 1/4</i>	15			
				<i>all</i>	16	6	21	





Description of School Districts in *Gosper* County, as shown by Map No. Made  
Jan 13 / 1896

STATE JOURNAL CO., Printers & Book Binders, Stationers and Dealers, Lincoln, Neb.

No. of District	Date of Formation			DESCRIPTION—PARTS OF SECTIONS	SECTIONS	TOWN	RANGE	REMARKS
	Year	Month	Day					

41—Jim Bogle

all

5  
6  
7  
8  
17  
18

5 24

1956 July 1

Discontinued by petition of 55% of legal voters, Section 79-402, Nebraska School Laws, and attached to District 103 Furnas + 1 R Gosper.



1956 July 1

Discontinued by petition of 55% of Legal Voters, --  
Section 79-402, Nebraska School Laws, and  
Attached to District No. 63 Gosper and No. 54 Phelps Counties.



### PLAINVIEW

J.W. Thomas, County Superintendent, drew a map outlining the boundaries for Plainview school, District 12, on April 8, 1889. Classes were conducted in a sod building under the guidance of G.A. Stevens, who taught a six month school term. In 1890 a wooden school house, 20 x 30 feet with a brick foundation was erected at a cost of \$400. There are no records of when this school was closed.

From: Gosper County Supt. Rosemary Stagemeyer &

The Elwood Bulletin--August 7, 1986

# 41

Plainview

SE  $\frac{1}{4}$  - NE  $\frac{1}{4}$

7-5-24

# 41

H.C. Starks






To School Board Members of Districts No. 3 and 42:

ORDER OF COUNTY SUPERINTENDENT OF  
GOSPER COUNTY SCHOOLS, NEBRASKA

WHEREAS, petitions have been filed in this office on November 10, 1952 signed by at least 55% of all the legal voters of School Districts No. 3 and No. 42 requesting the following change of boundary: "That School District No. 42 consisting of Sections 4,5,6,7,8,9,16,17, & 18 of Township 8 Range 21, Gosper County, Nebraska be dissolved and the boundary line between Sections 3 & 4, 9 & 10 and 15 & 16 of Districts 3 & 42 be removed and that all of Sections 4,5,6,7,8,9,16,17, & 18 in Township 8 Range 21 of Gosper County, Nebraska be attached to and become a part of District No. 3 consisting of Sections 1,2,3,10,11,12,13,14 and 15 in Township 8 Range 21 of Gosper County, Nebraska.", sworn statements showing the names of all the legal voters of such districts having also been filed herein, legal notices of the filing of such petitions and notices of the date of hearing having been posted and said hearing having been held on November 17, 1952 according to law,

NOW, THEREFORE, I, Doris E. Bigelow, County Superintendent of Gosper County, Nebraska, by authority of the laws of the state of Nebraska and the powers vested in me by such laws do hereby declare that District No. 42 be attached to and become a part of District No. 3 of Gosper County, Nebraska and hereafter such School District shall be known as School District No. 3 of Gosper County, Nebraska.

Witness my hand this 24 day of November, 1952.

  
*Doris E. Bigelow*  
County Superintendent of Schools  
Gosper County, Nebraska



PROOF OF PUBLICATION

STATE OF NEBRASKA,  
GOSPER COUNTY, SS.

**NOTICE  
Of Freeholders Petition for  
Change of the School  
District Boundaries.**

Notice is hereby given that upon the 28th day of March 1955, a petition for change of school district boundaries will be presented to the County Superintendent, Gosper County and hearing on same will be held before the said Board at the County Superintendent's office at Elwood, Nebraska at 1:00

1, to-wit:  
To set off the following described land from School District No. 22 Gosper County, Nebraska, and attach the described land to School District No. 3, Gosper County, Nebraska, to-wit: The N $\frac{1}{2}$  and SE $\frac{1}{4}$  of Section 19 and the N $\frac{1}{2}$ SW $\frac{1}{4}$  and the S $\frac{1}{2}$ NW $\frac{1}{4}$  of Section 20 all in Township 8, Range 21, Gosper County, Nebraska.

Posted on the 11th day of March 1955.

By LEON HIGH,  
A Legal Voter of Said  
District. 17

I, Mervin Deck, being duly sworn, on my oath depose and say I am the publisher of THE ELWOOD BULLETIN, a legal weekly newspaper of general circulation, printed and published in Elwood, said county and state, and that the notice of which one on the margin hereof is a true copy, was published in the regular and entire issue of said ELWOOD BULLETIN on the following days of publication, to-wit:

Thursday, March 17, 1955 Thursday, \_\_\_\_\_ 19\_\_\_\_  
Thursday, \_\_\_\_\_ 19\_\_\_\_ Thursday, \_\_\_\_\_ 19\_\_\_\_  
Thursday, \_\_\_\_\_ 19\_\_\_\_ Thursday, \_\_\_\_\_ 19\_\_\_\_

Mervin Deck

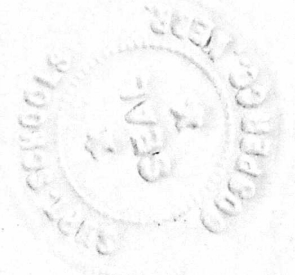
Subscribed and sworn to before me this 17 day of March 1955

Fee \$ 4.05

Joy Beer

Notary Public

My commission expires 3/30 1959



Description of School Districts in *Gosper* County, as shown by Map No. Made Jan 13 / 1896

No. of District	Date of Formation			DESCRIPTION—PARTS OF SECTIONS	SECTIONS	TOWN	RANGE	REMARKS
	Year	Month	Day					
42				Fred Knapp	All			
					4 5 6 7 8 9 16 17 18	8	21	
				Boundaries changed April 3, 1911, and are now as below:				
				All of	1 5 6 7 8 9 17 18			Given its present form by petition signed by every voter in district.
				Boundaries changed July 6, 1945 and are as given below:				
				All of	4 5 6 7			attached by petition. All of Sec. 16 Township 8 Range 21.





8 Range 21.

6  
7  
8  
9  
16  
17  
18

8

21

District dissolved by  
petition of 55% of  
legal voters and area  
was attached to District  
No. 3., November 24, 1952.

Description of School Districts in *Gosper* County, as shown by Map No. Made *Jan 13 1896*

STATE JOURNAL CO., Blank Book Makers, Stationers and Printers, Lincoln, Neb.

No. of District	Date of Formation			DESCRIPTION—PARTS OF SECTIONS	SECTIONS	TOWN	RANGE	REMARKS
	Year	Month	Day					
43				<i>Hyalop.</i>	<i>all</i>			
					19 20 21 29 30 31 32 33			
				<i>N<sup>2</sup> &amp; SW<sup>4</sup></i>	28	8	21	
				<i>Boundaries changed April 3, 1911, and are now as below:</i>				
				<i>all of</i>	19 20 29 30 31 32 33			<i>Given its present form by petition signed by fourteen out of the twenty-six voters in the district.</i>
				<i>South West quarter</i>	21			
				<i>Boundaries changed July 6, 1945 and are now as given below:</i>				
				<i>all of</i>	19 20 21 30			<i>Attached by petition: N<sup>1</sup>/<sub>2</sub>, SE<sup>1</sup>/<sub>4</sub> of section 21, N<sup>1</sup>/<sub>2</sub>, SW<sup>1</sup>/<sub>4</sub> of section 28 Town 21 &amp; Range 21</i>





1958 July 18 Discontinued by petition of more than 2570 of  
Legal Voters, Section 79-402, Nebraska School  
Law and attached to District No. 12 Frontier County.  
To be known as District No. 44 Logan County and  
District No. 12, Frontier County.

# 42

Leon H. H. H.

Lepington





(C9)

# 42

Knapp



























Dist. #43

Nyslop School

Opal Hudson teacher

Early '30s

Teacher

Marian Vincent

Teacher Opal Hudson

Boy in door

Richard Sun

~~22~~









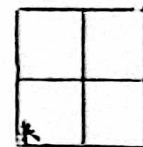




#44 None

Salem Lutheran

Commencing at the Southeast corner of Section 7 in Township 6 North Range 23 West of 6th P.M.; thence East on Section line  $28\frac{1}{4}$  rods, thence North  $28\frac{1}{4}$  rods thence West  $28\frac{1}{4}$  rods thence South  $28\frac{1}{4}$  rods to place of beginning and containing 5 acres and no more.



Salem # 44

SW $\frac{1}{4}$  - SW $\frac{1}{4}$

7-6-23





(71)

# 44 northwest  
Keller

# 44

Dean Weisert

---

Crista



Description of School Districts in *Gosper* County, as shown by Map No. *Made Jan 13, 1896*

No. of District	Date of Formation			DESCRIPTION—PARTS OF SECTIONS	SECTIONS	TOWN	RANGE	REMARKS
	Year	Month	Day					
411				<i>Keller</i>	<i>all</i>			
					4 5 6 7 8 9 16 17 18	8	23	
				<i>Boundaries changed June 21, 1954 and are now as given below.</i>				
				<i>all</i>	4 5 6 7 8 9 16 17 18 19 20 29 30	8	23	<i>Area attached from Dist. #49 according to Sec. 79-420. Neb. Schol Laws.</i>



1958 July

18 Discontinued by petition of more than 55% of  
Legal Voters, Section 79-402, Nebraska School  
Laws and attached to District No. 12 Frontier County.  
To be known as District No. 44 Logan County and  
District No. 12, Frontier County.





42

# 45

2 men

2 schools



# 45

---

Ralph Ford

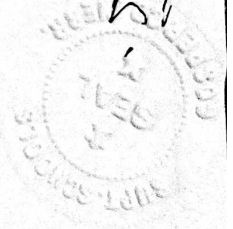
Bertrand

Description of School Districts in *Gosper*

County, as shown by Map No. *March*  
*Jan 13 1898*

STATE JOURNAL CO. BANKERS, MEASURERS, STATIONERS and PRINTERS, Lincoln, Neb.

No. of District	Date of Formation			DESCRIPTION—PARTS OF SECTIONS	SECTIONS	TOWN	RANGE	REMARKS
	Year	Month	Day					
45				<i>Union</i>	<i>all</i>			
	1907	4	2	<i>all</i>	22 23 24 25 26 27 34 35 36 28	8 8	21 21	<i>Given its present form by petition from the voters of the district</i>
				<i>SE4</i>	22 23 24 25 26 27 35 36 28 34	8	21	
				<i>South east quarter north half</i>				
				<i>Boundaries changed April 3, 1911 and are now as below</i>	<i>all</i>			
					23 24 25			<i>Given its present form by petition signed</i>





East half  
East half  
North half

20  
22  
27  
34

Boundaries changed July 6, 1945 and are now as given below:

all of

SE  $\frac{1}{4}$   
N  $\frac{1}{2}$

22  
23  
24  
25  
26  
27  
35  
36  
28  
34

8 21

attached by petition  
W $\frac{1}{2}$  of section 22, W $\frac{1}{2}$  of  
section 27, SE $\frac{1}{4}$  of section  
28, Township 8 Range 21

1945 July 1

Discontinued by petition of 55% of legal voters,  
Section 79 - 402, Nebraska School Laws, and  
attached to District No. 63 Gosper and No. 54 Phelps Counties





#46

Greenwood

54

Emma

H 46

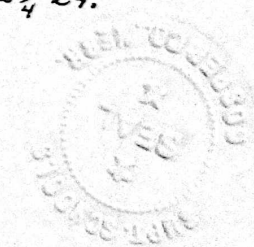
Calypso



Description of School Districts in *Groesbeek*

County, as shown by Map No. Made  
*Jan 13 / 1896*

No. of District	Date of Formation			DESCRIPTION—PARTS OF SECTIONS	SECTIONS	TOWN	RANGE	REMARKS
	Year	Month	Day					
46				<i>Greenwood</i>	<i>all</i>			
					5 6 7 8	6	21	
				<i>all</i>	1 12	6	22	
				<i>Boundaries changed June 15, 1948 and are now as given below!</i>				
				<i>all of</i>	5 6 7 8 1 12 23 26 35 36 25 24 24	6 6 7 7	21 22 22 22	<i>Area attached from Dist. 34 which was dissolved according to Sec. 79-137 Rev. St. of Neb., 1943 Sec. 23, 26, 35, 36, 25-5<sup>2</sup>24, NW<sup>1</sup>/<sub>4</sub> 24.</i>
				<i>S 2 NW 4</i>				
				<i>Boundaries changed July 25, 1953 and are now as given below:</i>				
				<i>all of</i>	5 6 7 8			<i>Area attached to Dist. #39. petition under Sec. 79-402, Neb. School Law. Sec. 23, 25, 26, 35, 36, W<sup>1</sup>/<sub>2</sub> 24, SE<sup>1</sup>/<sub>4</sub> 24 Township 1 N. R. 22 W.</i>



1.  
12

6

22.

1956 July 1

Discontinued by petition of 55% of legal voters,  
Section 79-402, Nebraska School Laws, and  
attached to District #63 Gosper and No. 54 Phelps Counties.



Description of School Districts in *Gisler*County, as shown by Map No. Made  
Jan 13 1896

STATE JOURNAL CO. Blank Book Makers Stationers and Printers Lincoln, Neb.

No. of District	Date of Formation			DESCRIPTION—PARTS OF SECTIONS	SECTIONS	TOWN	RANGE	REMARKS
	Year	Month	Day					
47				<i>Amberger</i>	<i>all</i>			
					5 6 7 8 17 18 19 20	7	23	
	1957	June	1	Discontinued by petition of 55% of voters, Section 79-402, Nebraska School Laws, and attached to Dist. #30.				



Description of School Districts in *Gasper* County, as shown by Map No. *Made*  
*Jan 13 / 1896*

No. of District	Date of Formation			DESCRIPTION—PARTS OF SECTIONS	SECTIONS	TOWN	RANGE	REMARKS
	Year	Month	Day					
<i>48</i> <i>Joint with Phelps Co</i>		<i>August</i>		<i>Nelson</i>	<i>all</i>			<p>District dissolved by petition of 5590 of legal voters and boundary line changed so the area was attached to other districts as follows:</p> <p>To Dist. 40:  <i>SE 1/4</i> Sec. 11  <i>All</i> Sec. 12  <i>N 1/2</i> Sec. 13  <i>N 1/2</i> Sec. 14 T. 6 R. 21</p> <p>To Dist. 35:  <i>S 1/2</i> Sec. 13  <i>S 1/2</i> Sec. 14  <i>NE 1/4</i> Sec. 23  <i>NW 1/4</i> Sec. 24 T. 6 R. 21.</p> <p>To Dist 36 Phelps Co.  <i>lots. 1, 2, 3 &amp; 4</i>  <i>E 1/2 NW 1/4</i> Sec. 18.  <i>W 1/2 NE 1/4</i> Sec. 18 T. 6 R. 20  <i>W 1/2</i> Sec. 7 T. 6 R. 20.</p> <p><i>August 11, 1951</i></p>
				<i>SE 1/4</i>	<i>12</i>			
				<i>NE 1/4</i>	<i>13</i>			
				<i>NW 1/4</i>	<i>14</i>			
					<i>11</i>			
					<i>23</i>			
					<i>24</i>	<i>6</i>	<i>21</i>	



Description of School Districts in *Gosper*

County, as shown by Map No. Made

*Jan 13 / 1894*

STATE JOURNAL CO., Map & Book Makers, Stationers and Printers, Lincoln, Neb.

No. of District	Date of Formation			DESCRIPTION—PARTS OF SECTIONS	SECTIONS	TOWN	RANGE	REMARKS
	Year	Month	Day					
49		May		Bean all	19 20 29 30	8	23	Discontinued according to Sec. 79-420, Neb. School laws - 1953 and attached to District No. 44 on June 21, 1954



Description of School Districts in *Gosper* County, as shown by Map No. *Made*  
*Jan 13 / 1896*

No. of District	Date of Formation			DESCRIPTION—PARTS OF SECTIONS	SECTIONS	TOWN	RANGE	REMARKS
	Year	Month	Day					
50				<i>Jone Star</i>	<i>all</i>			<p>Discontinued by petition of 55% of voters and new district no. 4 was formed from districts 24, 50, 52 &amp; 53 according to sec. 79-402, Nebr. School Laws. March 29, 1951</p>
					19 20 21 28 29 30 31 32 33	8	22	



Description of School Districts in *Gosper* County, as shown by Map No. Made  
Jan 13 1896

STATE JOURNAL CO., PRINTERS AND PUBLISHERS, LINCOLN, NEB.

No. of District	Date of Formation			DESCRIPTION—PARTS OF SECTIONS	SECTIONS	TOWN	RANGE	REMARKS
	Year	Month	Day					
51				about Hand all	20 21 28 29 32 33 22 27 34	5	21	
1954	Aug.	23		Dissolved according to Section 99-420, Nebraska School Laws, 1953-1954 and attached to District No. 7.				

Description of School Districts in *Goshute*

County, as shown by Map No. Made  
*Jan 13 1896*

No. of District	Date of Formation			DESCRIPTION—PARTS OF SECTIONS	SECTIONS	TOWN	RANGE	REMARKS
	Year	Month	Day					
<i>52</i>				<i>Antelope</i>	<i>all</i>			
					<i>4</i>			<i>Discontinued by petition of 5590 of voters and new district No. 4 was formed from Districts 29, 50, 52 + 53 according to Sec. 79-402 Neb. School Laws - March 29, 1951.</i>
					<i>5</i>			
					<i>6</i>			
					<i>7</i>			
					<i>8</i>			
					<i>9</i>			
					<i>16</i>			
					<i>17</i>			
					<i>18</i>	<i>8</i>	<i>22</i>	





95

# 47

Umberger



# 47

---

P. J. Woolley





(2)

# 48  
Peterson  
(Nelson)

#L 48

---

Elmer

Dannell



District 52 had an enrollment of 14 students on October 2, 1896. According to the teacher, Carrie Phares the following students: George, Elizabeth, Katie and Cora Decker; Minie Kolb, Rose, Lantz and Johnny Henderson and Noble Decker were neither absent or tardy from school during the term.

From: Gosper County Supt. Rosemary Stagemeyer &  
The Elwood Bulletin--August 7, 1936

# 52

Antelope  
NW 1/4 - NE 1/4  
8-8-22

# 49

Theodore Curtis  
Koch

# 50

Vaughn - Elwood  
Leggett

# 51

Bonnie Hand - Elwood

# 52

Ted Burke

**DEATH OF PIONEER  
RURAL TEACHER**

Mrs. Elmer (Cora) McGee of Moses Lake, Wash., passed away March 5th. She was born August 14, 1878 at Quitman, Missouri

She will be remembered by many of her former pupils, as she taught her first term in the Hand district, in Gosper county, northeast of Edison and also in other rural districts near Edison. She left here in the early 1900's and is survived by her husband and two brothers, Jess Martin of Oelwein, Iowa and Will Martin of Edison.—Arapahoe Mirror.

---

3-16-1961  
Elwood Bulletin

# 51





79

#53

Wilcoxville



# 53

George  
Nanson

Description of School Districts in *Gosper*

County, as shown by Map No. *Made Jan 13 1896*

STATE JOURNAL CO., Blank Book Makers, Stationers and Printers, Lincoln, Neb.

No. of District	Date of Formation			DESCRIPTION—PARTS OF SECTIONS	SECTIONS	TOWN	RANGE	REMARKS
	Year	Month	Day					
53				<i>Milkeyville all</i>	22 23 24 25 26 27 34 35 36	8	22	Discontinued by petition of 5590 of voters and new district No. 4 was formed from Districts 24, 50, 52 + 53. According to Sec. 79-402 Neb. School Laws. March 29, 1951.





1986

# GOSPER COUNTY NEBRASKA CODE MAP

R-24-W

R-23-W

R-22-W

R-21-W

T-8-N	NORTHWEST  BEAN  BRACE C  PLEASANT VIEW  SUNNY VIEW	ANTELOPE  BETHEL B  WILKEYVILLE	ROBB A    UNION
T-7-N	D  PLEASANT HILL  WEISMANN	ELWOOD  ELWOOD  QUAKERVILLE  E	LONE STAR  DUFF  SMITHFIELD HARRISON F  TRACYVILLE  REMBERG
T-6-N	SALEM  ASH GROVE EAST MUDDY GOSPER SCHOOL  MURDOCK	KAMPTON  TURKEY CREEK H ROBBINS FAIRFIELD  HOMERVILLE  WEBER	GREENWOOD PRAIRIE GEM  LINCOLN G  PETERSON
K	BLOODY HILL  SNOWBALL ELK CREEK L  STAGEMEYER  SUNFLOWER  BRACE	FAIRVIEW PHILLIPS GROVE  UNION RIDGE P LONE TREE  SNYDER  BLACKWOOD  GARDNER	FOUR CORNERS  ABRAHAM  HIGHLAND Q  HAND  FAIRY
K	LATHROP PLAINVIEW WEST MUDDY K  STARK PRAIRIE GLEN	BRACE	GARDNER



98

# 54

Sunny Plain  
(Morgan)

# 54

Clifford

Tilson



Description of School Districts in *Gosper*

County, as shown by Map No. *Made Jan 13 / 1896*

No. of District	Date of Formation			DESCRIPTION—PARTS OF SECTIONS	SECTIONS	TOWN	RANGE	REMARKS
	Year	Month	Day					
<i>54</i>				<i>Jou Morgan</i>	<i>all</i>			
					<i>23</i>			
					<i>24</i>			
					<i>25</i>			
					<i>26</i>			
					<i>35</i>			
					<i>36</i>	<i>8</i>	<i>23</i>	
<i>1957</i>	<i>June</i>	<i>1</i>		<i>Discontinued by petition of 55% of legal voters, Section 79-402 Nebraska School Laws and attached to District No. 30.</i>				

Description of School Districts in *Gosper* County, as shown by Map No. Made  
*Jan 13 / 1896*

STATE JOURNAL CO. PRINTERS, STENOGRAPHERS AND PHOTOGRAPHERS, LINCOLN, NEB.

No. of District	Date of Formation			DESCRIPTION--PARTS OF SECTIONS	SECTIONS	TOWN	RANGE	REMARKS
	Year	Month	Day					
55 - <i>Homer</i>				<i>All</i>	24			
					25			
					35			
					36			
				<i>N<sup>2</sup> and SE<sup>4</sup></i>	23			
				<i>S<sup>2</sup> and NE<sup>4</sup></i>	24	6	23	
			<i>SE<sup>4</sup></i>	23				
			<i>NE<sup>4</sup></i>	26	6	23	<i>attached by petition March 28 1902.</i>	
<p><i>Discontinued by petition of more than 50% of legal voters and new district No. 268 was formed from Districts 13, 31 and 55 according to Sec. 79-402 Nebraska School Laws. May 22, 1953.</i></p>								





Description of School Districts in *Gosper*County, as shown by Map No. Made  
*Jan 13 1896*

No. of District	Date of Formation			DESCRIPTION—PARTS OF SECTIONS	SECTIONS	TOWN	RANGE	REMARKS
	Year	Month	Day					
56				<i>III</i>	21 28 29 30 31 32 33	7	23	Discontinued according to Sec. 79-420, Kett. School Law-1953 and area attached to Dist. # 36, June 21, 1954.



Description of School Districts in *Gosper* County, as shown by Map No. Made  
*Jan 13 1896*

STATE OF NEBRASKA: GEOGRAPHICAL MAPS, SURVEYORS AND PRINTERS, LINCOLN, NEB.

No. of District	Date of Formation			DESCRIPTION—PARTS OF SECTIONS	SECTIONS	TOWN	RANGE	REMARKS
	Year	Month	Day					
57				<i>all</i>	25 26 35 36 27 34	5	24	<i>Discontinued according to Section 79-420 Nebraska School Laws, 1953, 1954 and attached to District No. 17 May 31, 1955</i>

Description of School Districts in *Gosper* County, as shown by Map No. Made *Jan 13 / 1896*

No. of District	Date of Formation			DESCRIPTION—PARTS OF SECTIONS	SECTIONS	TOWN	RANGE	REMARKS
	Year	Month	Day					
<i>58</i>		<i>Pollard</i>		<i>all</i>	<i>31</i>			
					<i>32</i>			
				<i>W<sup>2</sup></i>	<i>33</i>	<i>8</i>	<i>23</i>	
				<i>all</i>	<i>2</i>			
					<i>3</i>			
					<i>4</i>			
					<i>9</i>			
				<i>W<sup>2</sup></i>	<i>10</i>			
					<i>11</i>	<i>7</i>	<i>23</i>	
<i>1957</i>	<i>June</i>	<i>1</i>	<i>Discontinued by petition of legal voters - Section 79-402 Nebraska School Laws, and attached to District No. 30.</i>					





(80)

# 56  
Willmann  
(Barton)



# 56

Richard  
Debban

Chwood

Description of School Districts in *Gosper* County, as shown by Map No. Made *Jan 13 / 1896*

STATE JOURNAL CO., Blank Book Makers, Stationers and Printers, Lincoln, Neb.

No. of District	Date of Formation			DESCRIPTION—PARTS OF SECTIONS	SECTIONS	TOWN	RANGE	REMARKS
	Year	Month	Day					
<i>59</i>				<i>Glendale</i>	<i>All</i>			
					<i>19</i>			<i>Discontinued by petition of more than 60% of its legal voters and annexed to school district #22 by similar petition of voters thereof October 5, 1925</i>
					<i>29</i>			
					<i>30</i>			
					<i>31</i>			
					<i>32</i>			
				<i>S2</i>	<i>20</i>	<i>7</i>	<i>21</i>	



Description of School Districts in *Jasper*

County, as shown by Map No. *Made*  
*Jan 13 1896*

No. of District	Date of Formation			DESCRIPTION—PARTS OF SECTIONS	SECTIONS	TOWN	RANGE	REMARKS
	Year	Month	Day					
<i>60</i>				<i>Frank Beor</i>	<i>Ull</i>			
					<i>21</i>			
					<i>22</i>			
					<i>27</i>			
					<i>28</i>			
					<i>34</i>	<i>8</i>	<i>23</i>	
	<i>1957</i>	<i>June</i>	<i>1</i>	<i>Discontinued by petition of 55% of legal voters, Section 74-402 Nebraska School Laws, and attached to District No 30.</i>				

Description of School Districts in *Gosper* County, as shown by Map No. *Map*  
*Jan 13 1896*

STATE UNIVERSAL CO. Lithographers, Stationers and Printers, Lincoln, Neb.

No. of District	Date of Formation			DESCRIPTION—PARTS OF SECTIONS	SECTIONS	TOWN	RANGE	REMARKS
	Year	Month	Day					
<i>7</i> <i>61</i>				<i>Frontier county number</i> <i>Number changed March 12. John Minnie</i>	<i>All</i> <i>19</i> <i>30</i> <i>31</i>	<i>5</i>	<i>24</i>	
	<i>1957</i>	<i>May</i>	<i>27</i>	<i>Change of Boundary on Freeholder's Petition: Section 79-403, Neb. School Law</i> <i>All</i> <i>N<math>\frac{1}{2}</math></i>	<i>19</i> <i>30</i> <i>31</i>	<i>5</i>	<i>24</i>	
	<i>1957</i>	<i>June</i>	<i>25</i>	<i>Change of Boundary by petition of 55% of legal voters as provided by Section 79-402 of the Nebraska Statutes to attach above description to School District 54 Frontier County. Merger to be known as School District 54 Frontier County and School District 61 Gosper County.</i>				
	<i>1967</i>	<i>July</i>	<i>1</i>	<i>Change of Boundary by petition of 100% of legal voters as provided by section 79-402 of the Nebraska Statutes to attach the above description to School District No 21, Fremont County (Cambridge).</i>				



Description of School Districts in *Gosper* County, as shown by Map No. Made

*Jan 13 / 1896*

STATE JOURNAL CO., Blank Book Makers, Stationers and Printers, Lincoln, Neb.

No. of District	Date of Formation			DESCRIPTION—PARTS OF SECTIONS	SECTIONS	TOWN	RANGE	REMARKS
	Year	Month	Day					
<i>Joint with Furness Co</i> 39				<i>Furness county number</i>	<i>32</i>			
62				<i>Number changed March 12, 1895 - Gardner</i>	<i>33</i>	<i>5</i>	<i>22</i>	
62	<i>Sept</i>	<i>1954</i>	<i>13</i>	<i>Boundaries changed and are now as given below.</i>				<i>Given its present form by the dissolution of District 21 Gosper - 83 Furness according to Section 79-420, Neb. School Laws, 1953-1954</i>
				<i>All</i>	<i>32</i>	<i>5-</i>	<i>22</i>	
				<i>all.</i>	<i>33</i>	<i>5</i>	<i>22</i>	
				<i>all</i>	<i>36</i>	<i>5-</i>	<i>23</i>	
				<i>all</i>	<i>31</i>	<i>5</i>	<i>22</i>	
	<i>1956</i>	<i>July</i>	<i>1</i>	<i>Discontinued by petition of 55% of legal voters, Section 79-402, Nebraska School Laws, and attached to District No. 18, Furness County.</i>				

Date	Month	Day	Description	Acres	Section	Block	Notes
				22-25-27			
				25-26-27			
				28-33-34			
				35-36			
			E 1/2	3	7	21	
			all	22-23-24			
				25-26-27			
				35-36			
			SE 1/4	28			
			N 1/2	34	8	21	
			all	1			
				12	6	22.	
1959	Aug	17	Boundaries changed under Sec. 79-402, Nebraska School Laws add following description to above. SW 1/4; S 1/2 NW 1/4 All	30	5	20	
				23-24-25			
				26-35-36			
			E 1/2	27			
			E 1/2	34	5-	21	
1962	5	24	SE 1/4; E 1/2 SW 1/4 NW 1/4	32	7	21	Freeholders Petition 79-403, Nebr. School Law.
			SE 1/4; E 1/2 SW 1/4	3	7	21	A ranch Hastenau. Emma Wilken Roy Wilken
				3	7	21	
1964	2	25	NE 1/4	16	7	21	Freeholder Petition 79-403, Nebr. School Law Wm + Bernadine Resken
1965	8	30	SW 1/4; W 1/2 SE 1/4	19	7	21	Freeholder Petition 79-403, Nebr. School Law Paul + Ruth Fran...





K. J. H. W. L. S.

(73)

# 64 ?





## St. Matthew Evangelical Lutheran Church

St. Matthew Evangelical Lutheran Church was organized on January 9, 1893, by Rev. C. H. Seltz, who had been serving the Lutheran settlements in and around Arapahoe, NE, since 1888. The first officers of the congregation were H. Mohrman, Chairman; William Mues, Treasurer; and elders Chris Hausler and Ernest Huxoll. At this organizational meeting, a decision was made to build a church, which cost \$1400 complete with furnishings, at a site seven miles northwest of Arapahoe.

St. Matthew, jointly with Trinity of Arapahoe, called Rev. H. W. Prange, who served from 1895 to 1900. When he left for Ohio, the congregations called Rev. H. E. Meyer to be their pastor. These pastors also taught the parochial schools of their congregations. In 1909, Rev. Meyer was released by St. Matthew to devote more time to the work at Trinity and St. Matthew called their first minister, Rev. A. Habekost of Minden, NE. In 1908, a parsonage was built.

Rev. William Sprandel was pastor from 1912 to 1920, and Rev. G. Viehweg from 1920 to 1928. During this period, the congregation grew, and in 1925, a beautiful new church was dedicated in the name of the Triune God. On this occasion, former pastors, Seltz, Prange and Meyer delivered sermons to a throng of people.

Rev. H. Schabacker became the next pastor. He died in 1933 and services and burial were at St. Matthew. When cemeteries were laid out at a church, a Lord's Acre was reserved for burial of pastors and members of their family. Pastor Schabacker's son, Julius, a graduate, succeeded him, serving until 1941.

Rev. Walter E. Buss was the next pastor, serving from 1943 until 1948. Following this time, pastors were called and pastors left, and the declining membership reflected the change in the rural community. In 1960, the congregation joined with Salem to form a dual parish. After 77 years of organized services, in 1966, the difficult decision was made to disband the church, and members transferred to sister congregations in urban areas.

The St. Matthew cemetery is maintained by a cemetery board. The church bell serves as a landmark at the cemetery, a reminder of the heritage of loved ones.

St. Matthew supported a parochial school at the church site until 1942. A school was opened in Holbrook in 1951 with 19 pupils enrolled under instructor Vernon Haas. The next year, Floyd Behrens was the teacher of 23 pupils, and the next year Robert Gaede had an enrollment of 30.

St. Matthew

SE 1/4 - 31-5-23



# 57

F. C. Meyer

# 58 Wm. Fritz  
Edwood

# 60 Ben Houlden  
Edwood

#  
62439

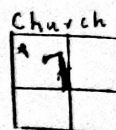
Carnest Braving

# 64

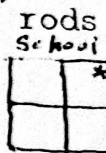
W. W. Genban  
Smithfield

Immanuel Lutheran

Beginning on range line between ranges 22 and 23 nine chains and fortysix links South from corner of Section one, twelve, six and seven, thence East, five chains and eighty-nine links; thence South eight chains and fifty links; thence West five chains and eighty-nine links; thence North eight chains and fifty links to place of beginning being five acres in NW $\frac{1}{4}$  of NW $\frac{1}{4}$  of Section 7 in Township 5 Range 22.



A tract of land situated in the E $\frac{1}{2}$ NE $\frac{1}{4}$  Section 12, Township 5, Range 23, described as follows, Beginning at the Northeast corner of the Section 12, Township 5 Range 23 running thence south 75 rods and 3 feet, thence north 75 rods to Section line, thence east along section line 17 rods and 3 feet to place of beginning, containing 8 acres.



Immanuel  
Lutheran

NE  $\frac{1}{4}$  - NE  $\frac{1}{4}$

12-5-23



A Mission Festival Service in 1916, at the Mues Grove. The men in the front row are believed to be guest speakers and ministers of participating congregations. The men in the rows behind them have been identified as members of the congregations. At this time, the men and women still did not sit together.



A brief history of each congregation follows:

## Immanuel Lutheran Church

Immanuel Lutheran Congregation of Gosper County, Nebraska, was organized on September 3, 1882, by Rev. Fr. Caemmerer, who was serving the Arapahoe area Lutherans at that time. Rev. Caemmerer drafted the Constitution of the congregation, which was written down in German and English longhand. The founders of the congregation were Fred Wendland, Fred Melchert, Julius Ziebell, Gustav Bloch, Julius Schievelbein, and William Schievelbein, all with their families, and August Marquardt, who was not married. Also included on the communion roll of the church were the elderly parents of the Schievelbein men, Mr. and Mrs. Chr. W. Schievelbein and the wives of the other men.



The congregation built its first church in 1885, a sod structure on a five-acre plot provided by William Schievelbein. Three years later, the soddy was too small, and in 1888, a frame chapel, 42 by 34 by 18 feet was built. The chapel had two doors at the front entry, one for the women to move to their side of the church, the left side; and one for the men, to move to the right side of the church. Older children sat at the front of the church, where they were instructed in the Bible each Sunday, and the younger children sat with their mothers. The chapel was also used for school. The benches had to be turned from the altar to face to the west during the week for school, and for Sunday service, they were again faced to the altar at the east end of the chapel.

Pastor A. Merz was the first called resident pastor of Immanuel, coming in 1893. The congregation built a parsonage for him to live in, and so their church site was complete with church and school and parsonage. One of the beginners in the school was Pastor Merz' son Cornelius, who later in the 1950's served as a teacher in the Immanuel Lutheran School. Cornelius told of remembering when he played in the old soddy which had been the first church, and which his father later used as a chicken-house



**Doris E. Smith**

Doris Smith, 88, died February 28, 1997 at the Tri-County Hospital in Lexington.

She was born May 20, 1908, at Smithfield, NE to Edwin and Lucy (Floyd) Bigelow. She graduated from Smithfield High School in 1926. She attended the Nebraska Wesleyan University and the University of Nebraska at Lincoln. She taught rural schools in Gosper and Frontier counties. In 1936, she was appointed to the office of Gosper County Superintendent, retiring in 1979. She also served as Clerk for the Gosper County Office of the Selective Service System from 1947 to 1972.

On August 23, 1966 she was united in marriage to Dewey V. Smith by Rev. Fred Baker of the Elwood United Methodist Church.

Doris joined the Smithfield United Methodist Church in 1920 where she taught Sunday School class for several years. She later transferred her membership to the Elwood United Methodist Church and was a member of its United Methodist Women. She was a member of Myrtle Rebekah Lodge #23 of Lexington, Martha Washington Rebekah Lodge #125 of Elwood, Clio Federated Woman's Club and the D.U.O. Club. She was a charter member of the Alexis Club and a charter member and past president of the Phi Chapter of the Delta Kappa Gamma Society. She was also a past president of the Nebraska Association of County Superintendents.

Survivors include a step-son, Gary Smith and wife, Sharon, one step-daughter, Maxine Leggott, and husband, James J; a sister, Lois Carter of Elwood; and a sister-in-law, Marie Bigelow, of Lexington; 5 grandchildren, Jim Leggott and wife Kathy, of Elwood; Greg Leggott of Denver, CO; Rick Leggott and wife Anita, of Minneapolis, MN; Kim Kraft and her husband, Bill, of Ashland, NE; and Chris Smith of Lincoln; four great-grandchildren, Lyndsay and J.D. Leggott of Elwood, and Gregory and Jeffrey of Minneapolis; 7 nieces and 3 nephews and a host of friends.

She was preceded in death by her parents, her husband, Dewey, twin brothers, Howard and Harold, half sisters, Nettie Williams and Ethel Mason and half-brother, Alfred Bigelow.

Services were held at 11:00 a.m. Monday, March 3, 1997, at the Elwood United Methodist Church. Pastor Onamae Waddel officiated. Burial was held in the Highland Cemetery at Bertrand.

Memorials are suggested to the Doris Smith Memorial.

**SUNFLOWER**

A Christian Day school was started in Elk Creek precinct in 1895 with school held part of the term at Saint Matthew Church and the balance of the term at Trinity in Arapahoe. The school which was known as Sunflower was

closed for a number of years. It reopened in 1923 and continued until 1942 when no teacher could be secured. In 1951, the school reopened again and continued for a few years before closing its doors for the last time.

From: Gosper County Supt. Rosemary Stagemeyer &

The Elwood Bulletin--August 7, 1986



St. Matthew

or

Sunflower

School

NE  $\frac{1}{4}$  - NW  $\frac{1}{4}$

32-5-23

## Facts and Figures

According to early records an election was held each year until at least 1903. On November 2, 1897, the number of votes cast were nine hundred thirty five (935). One thousand one hundred six (1106) were cast on November 9, 1898. November 6, 1900 found one thousand one hundred twenty eight (1128) votes cast. One can see by the number of votes cast how fast the county was being settled.

By 1874 the population of Gosper County had reached one hundred and it was two hundred sixty one in 1875. In 1880 the population was one thousand six hundred seventy three, of which only one hundred sixty five were foreign born. The rest came mostly from the North Central States.

The population of Gosper County was at its peak in 1900. There were five thousand three hundred sixty one people in the county at this time, while the 1960 census shows two thousand four hundred eighty nine.

In the year 1900, Gosper County had six hundred fifty seven foreign born people. The most prominent were German of which there were four hundred thirty seven. Other nationalities represented were the Swedes, with sixty one; the English, forty one; the Canadians, twenty six; the Danes also numbering twenty six; the Swiss, twenty three; the Norwegians, twenty two; the Scotch and the Irish each had seven. The 1960 census shows twenty two foreign born people in Gosper County.

Early records show some interesting entries. Two amendments voted on in the election of November 4, 1880 were concerning the sale of liquor. The first, was a "proposed amendment of the constitution prohibiting the manufacture, sale and keeping for sale of intoxication liquors as a beverage." Voting "for" were three hundred seventy one; four hundred four cast their votes "against" the amendment. The second amendment voted on in the election was a "proposed amendment to the constitution that the manufacture, sale and keeping for sale of intoxicating liquor as a beverage shall be licensed and regulated by law." Voting "for" this amendment were two hundred twenty four, votes cast "against" were five hundred thirty two.

Another early item, which is amusing, is from the County Clerk's records of April 10, 1875 regarding the election of April 6, 1875. The item being voted on was for a member to a constitutional convention. Records show ten votes cast for J. F. Zediker, Gosper County with the following written in the election book: "No election was held in the county except in the West Muddy precinct on account of the treachery and infidelity of certain Democrats aided by Geo. H. Beck, County Commissioner in and for Gosper County." Signed by R. W. Gordon, County Clerk, assisted by C. P. Flower and W.A. Flower at Daviesville.

An item of interest from the book of elections in the early 1800's tells of voting on the transfer of townships 6, 7 and 8, Range 24 from Frontier County to Gosper County. Voting in favor of transfer were



nine hundred fifty four, against, thirty three. On August 8, 1884, The Arapahoe Pioneer says "The Frontier County Faber claims that Frontier County is perfectly willing to have the three odd townships attached to Gosper County and Gosper County, like Barkis, 'is willing'. Now all it needs is some action." There is no later mention of this, but one wonders why, with such a majority in favor of the transfer nothing more was done.

April, 1884 - "Ed Warner reports a population of three hundred twenty persons in West Muddy precinct, Gosper County, of which one hundred seventy are males and one hundred fifty are females, divided into seventy two families."

The Arapahoe Pioneer on July 20, 1883 tells us "The citizens of district 14, Gosper County, turned out last week and built a good sod school house, 16 x 21 feet, in two days. This enterprise is highly commendable. The building will be known as Highland School."

Much progress has been made since the 1870's saw the county being formed. For example, January 1, 1964, Gosper County had one hundred forty five irrigation wells registered with the State of Nebraska, and in the last five years many more have been put down, increasing that past registration. Twelve thousand three hundred forty acres were irrigated in 1963, with many more under irrigation in 1969.

Gosper County had eight established school districts in 1879. Six of them had a school house and all but two were sod houses. In 1879, there were one hundred nineteen school children, with four qualified teachers living in the county. Their average wage in 1879 was \$138.88 a year.

The county had sixty nine districts in 1896. The records of 1900 still list sixty nine districts.

When the tractor replaced work horses, farms grew larger. As the farms grew larger, the schools grew smaller. One by one the school districts consolidated until the records in 1960 show eight school districts and at the present, in the school year 1969-1970, Gosper County has five school districts.

Another interesting comparison is found in the amount of valuation in the county. The total value of all property in 1879 was \$126,131.95; while the total value of all property in 1967 was \$12,993,544.00.

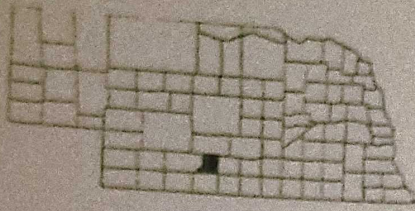
Gosper County is quite a place! It has lush rolling pastures being grazed by sleek fat cattle, beautiful fields of dark green irrigated corn, acres and acres of red milo fields and in July, golden wheat fields. Its biggest asset is the people who are friendly and loyals, with their roots firmly planted in Gosper County. Many of the people serve willingly as 4H Club leaders, helping to teach the youngsters to "make the best better", so regardless of where they may later roam, they can help themselves and others to make the best better. Gosper County is rich with history if only we bother to scratch the surface. It has a heritage we can be proud of.

1986 - average wage 19,196.16

Census



# Gosper County



County Seat	Elwood
License Number	73
Population	2,013
Square Miles	461
Valuation	\$197,548,154
County Levy	.4810
County Budget	\$2,356,040
County Employees	36
Registered Vehicles	3,481
Registered Voters	1,259
Miles of County Roads	656
Number of County Bridges	68

Commissioners  
 Verlouis Forster  
 Donald J. Foss  
 Glen Monter

Assessor Mary M. Gruber  
 Attorney Carlton E. Clark  
 Clerk Judith M. Geiger

Clerk Dist Ct

Election Com

Reg of Deeds

Hwy Supt Robert M. Snyder

School Supt Rosemary M. Stagemeyer

Sheriff David W. Schutz

Civil Defense

Surveyor Lyle W. Nott

Treasurer Delores Houlden

Vet Ser Off William A. Weismann

Weed Supt Jim Rhinchart

## Cities, Towns, Villages:

Elwood; Smithfield.

Between 1873 and 1889, three different county seats served the inhabitants of Gosper County. These continuing changes were due to shifts in population that occurred during the 16-year period. As one might imagine, each relocation of the county seat did not go unchallenged.

A growing interest in having an organized county government for this area culminated when a petition requesting such was filed with Gov. Robert Furnas in July 1873. A month later a proclamation was issued for the county's organization and the name of Nebraska Secretary of State John J. Gosper was chosen as the county name. Daviesville, the site of the area's first post office, was named the county seat. It would not be until March 2, 1881, however, that the county's organization was legalized and its boundaries officially established by the Legislature.

In November 1873, county commissioners, who had been elected less than four months earlier, authorized the construction of a courthouse in Daviesville. They did not, however, appropriate the necessary funding and as a result a courthouse was never built. For a number of years, officials kept county records and books in their homes.

During those years a new settlement known as Homerville was developed with the anticipation that the railroad would pass through it. Rapid growth of the settlement led to an election in August 1882, and Homerville became the county seat over two rivals. But the railroad never came to Homerville.

When the Burlington Railroad advanced westward toward Colorado, a townsite known as Elwood was platted in 1885. It was just three years later that a bitterly contested election ended with Elwood becoming the county seat. Homerville's businessmen and inhabitants followed the courthouse to Elwood, which today serves as the county seat. Fifty years after the local government offices were relocated to Elwood, voters approved a \$42,000 bond issue to match a Public Works Administration grant to build the current courthouse.



% of Land in each School Districts in Gosper County

Elwood ---114.81 square miles

Arapahoe ---130.93 square miles

Bertrand ---132.125 square miles

Cambridge ---2.5 square miles

District #4 ---35.75 square miles

District #15 ---18.87 square miles

Eustis ---13.00 square miles

Southern Valley ---20.00 square miles